

UNITED STATES  
DEPARTMENT OF THE INTERIOR  
BUREAU OF LAND MANAGEMENT

RECEIVED

RECEIVED  
MAIL ROOM

MAY 10 1989

APPLICATION FOR PERMIT TO DRILL, DEEPEN, OR PLUG BACK

RECEIVED

1a. TYPE OF WORK  
DRILL  
1b. TYPE OF WELL  
GAS

MAY 24 1989

OIL CON. DIV.

2. OPERATOR  
MERIDIAN OIL INC. *OK*

DIST. 3

3. ADDRESS & PHONE NO. OF OPERATOR  
P O BOX 4289  
FARMINGTON, NM 87499

5. LEASE NUMBER  
SF-079012

6. IF INDIAN, ALL. OR TRIBE NAME

7. UNIT AGREEMENT NAME  
SAN JUAN 31-6 UNIT

8. FARM OR LEASE NAME  
SAN JUAN 31-6 UNIT

9. WELL NO.  
206

4. LOCATION OF WELL  
925'S 1450'W

10. FIELD, POOL, OR WILDCAT  
BASIN FRUITLAND COAL

11. SEC. T. R. M OR BLK.  
*N* SEC. 4 T30N R06W NMPM

14. DISTANCE IN MILES FROM NEAREST TOWN  
17 MILES FROM GOVERNADOR

12. COUNTY 13. STATE  
RIO ARRIBA NM

15. DISTANCE FROM  
PROPOSED LOCATION 925'  
TO NEAREST PROPERTY  
OR LEASE LINE.

16. ACRES IN LEASE 17. ACRES ASSIGNED TO WELL  
*639.84* 319.84

18. DISTANCE FROM  
PROPOSED LOCATION  
TO NEAREST WELL DR. 600'  
COMPL., OR APPLIED  
FOR ON THIS LEASE.

19. PROPOSED DEPTH 20. ROTARY OR CABLE TOOLS  
3085' ROTARY

This action is subject to technical and  
procedural review pursuant to 43 CFR 3165.3  
and appeal pursuant to 43 CFR 3165.4.

21. ELEVATIONS (DF, FT, GR, ETC.)  
6267'GL

22. APPROX. DATE WORK WILL START

23. PROPOSED CASING AND CEMENTING PROGRAM

\*SEE OPERATIONS PLAN

DRILLING OPERATIONS AUTHORIZED ARE  
SUBJECT TO COMPLIANCE WITH ATTACHED  
"GENERAL REQUIREMENTS".

24. AUTHORIZED BY: *[Signature]*  
REGULATORY AFFAIRS

*5-2-89*  
DATE

PERMIT NO. \_\_\_\_\_ APPROVAL DATE \_\_\_\_\_  
APPROVED BY \_\_\_\_\_ TITLE \_\_\_\_\_ DATE \_\_\_\_\_

APPROVED  
AS AMENDED

APPROVED BY \_\_\_\_\_ TITLE \_\_\_\_\_ DATE *MAY 22 1989*

NOTE: THIS FORMAT IS ISSUED IN LIEU OF US BLM FORM 3160-3 AREA MANAGER

*8/5*  
*(c)*

Well Name: 206 SAN JUAN 31-6 UNIT  
 Sec. 4 T30N R06W  
 BASIN FRUITLAND COAL

925'S 1450'W  
 RIO ARriba NEW MEXICO  
 Elevation 6267'GL

Formation tops: Surface- SAN JOSE  
 Ojo Alamo- 2275  
 Kirtland- 2370  
 Fruitland- 2875  
 Fruitland Coal Top- 2960  
 Fruitland Coal Base- 3080  
 Intermediate TD- 2940  
 Total Depth- 3085  
 Pictured Cliffs- 3090

Logging Program: Mud logs from intermediate to total depth.

Mud Program:	Interval	Type	Weight	Visc.	Fl. Loss
	0 - 200	Spud	8.4 - 8.9	40-50	no control
	200 - 2940	Non-dispersed	8.4 - 9.1	30-60	no control
	2940 - 3085	Formation Water	8.4		no control

Casing Program:	Hole Size	Depth Interval	Csg. Size	Weight	Grade
	12 1/4"	0 - 200	9 5/8"	32.3#	H-40
	8 3/4"	0 - 2940	7"	20.0#	K-55
	6 1/4"	2890 - 3085	5 1/2"	15.5#	K-55
Tubing Program:		0 - 3085	2 7/8"	6.5#	J-55

Float Equipment: 9 5/8" surface casing - saw tooth guide shoe.

7" intermediate casing - guide shoe and self-fill insert float valve. Three centralizers run every other joint above shoe. Run insert float one joint above the guide shoe.

5 1/2" production casing - float shoe on bottom and a pre-drilled liner run to the 7" casing with a minimum 50' overlap. Liner hanger is a double slip grip type.

Wellhead Equipment: 9 5/8" x 7" x 2 7/8" x 11" 3000 psi xmas tree assembly.

#### Cementing:

9 5/8" surface casing - cement with 106 sacks of class "B" cement with 1/4# flocele/sack and 3% calcium chloride (125 cu ft. of slurry, 100% excess to circulate to surface). WOC 12 hours. Test casing to 600 psi for 30 minutes.

7" intermediate casing - lead with 42 sacks of 65/35 class "B" poz with 6% gel, 2% calcium chloride and 1/2 cu.ft. Perlite/sack (10.3 gallons of water/sack) tail with 100 sacks of class "B" with 2% calcium chloride. 200 lu ft. of slurry, 100% excess to cover the Ojo Alamo. Run temperature survey at 8 hours. WOC 12 hours. Test casing to 1500 psi for 30 minutes.

5 1/2" liner - do not cement.

All distances must be from the outer boundaries of the Section.

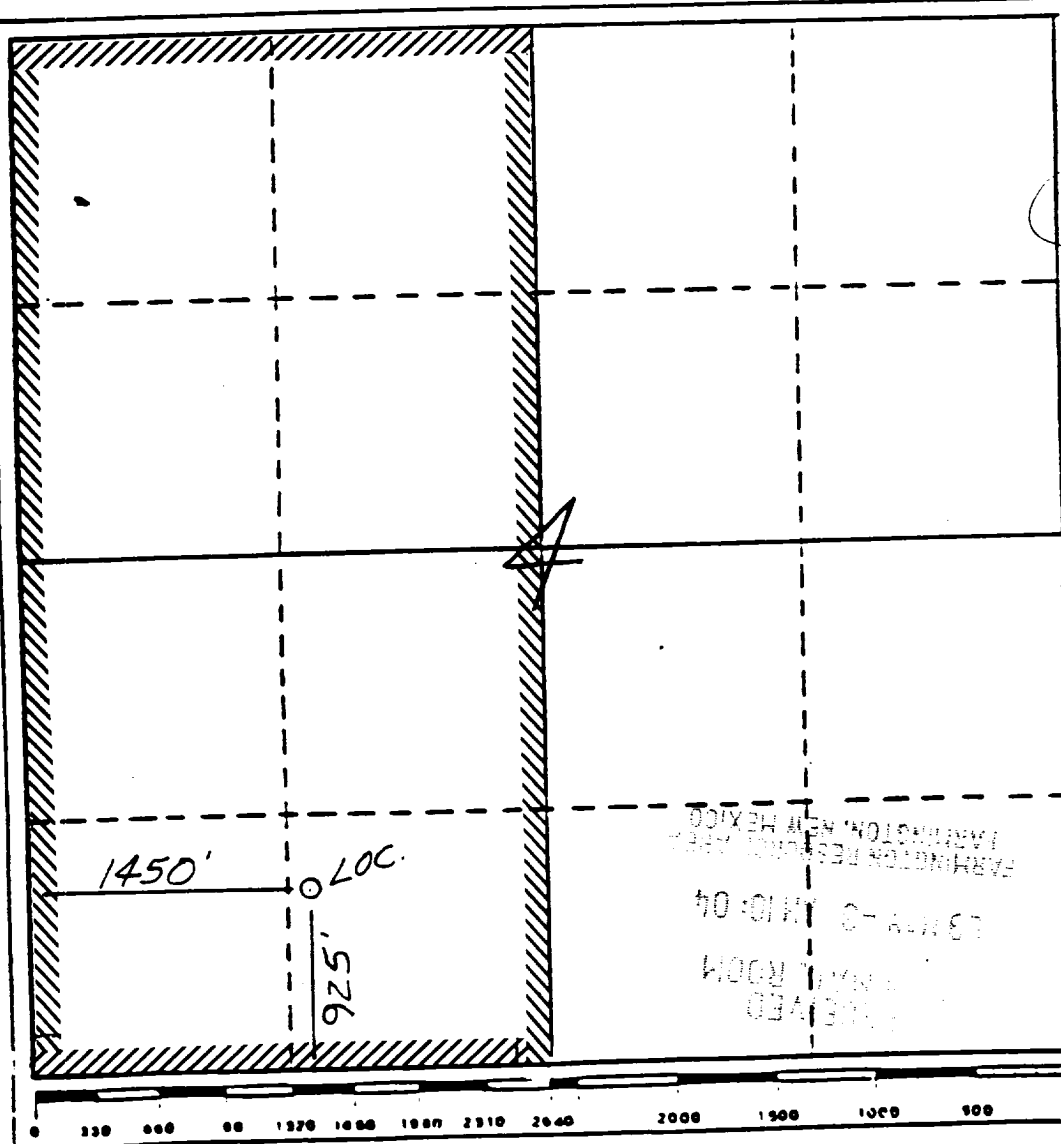
Operator Meridian Oil Inc.		Lease San Juan 31-6 Unit (SF-079012)		Well No. 206
Unit Letter N	Section 4	Township 30 North	Range 6 West	County Rio Arriba
Actual Footage Location of Wells 925 feet from the South line and 1450 feet from the West line				
Ground Level Elev. 6267'	Producing Formation Fruitland Coal		Pool Basin	Dedicated Acreage: 319.84

1. Outline the acreage dedicated to the subject well by colored pencil or hachure marks on the plat below.
2. If more than one lease is dedicated to the well, outline each and identify the ownership thereof (both as to work interest and royalty).
3. If more than one lease of different ownership is dedicated to the well, have the interests of all owners been consolidated by communitization, unitization, force-pooling, etc?

☒ Yes ☐ No If answer is "yes," type of consolidation Unitization

If answer is "no," list the owners and tract descriptions which have actually been consolidated. (Use reverse side of this form if necessary.)

No allowable will be assigned to the well until all interests have been consolidated (by communitization, unitization, force-pooling, or otherwise) or until a non-standard unit, eliminating such interests, has been approved by the Division.



CERTIFICATION

I hereby certify that the information contained herein is true and complete to the best of my knowledge and belief.

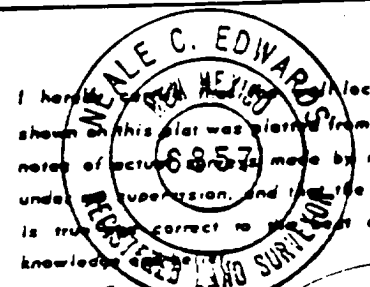
*[Signature]*

Name  
Regulatory Affairs

Position  
Meridian Oil Inc.

Company  
5-2-89

Date



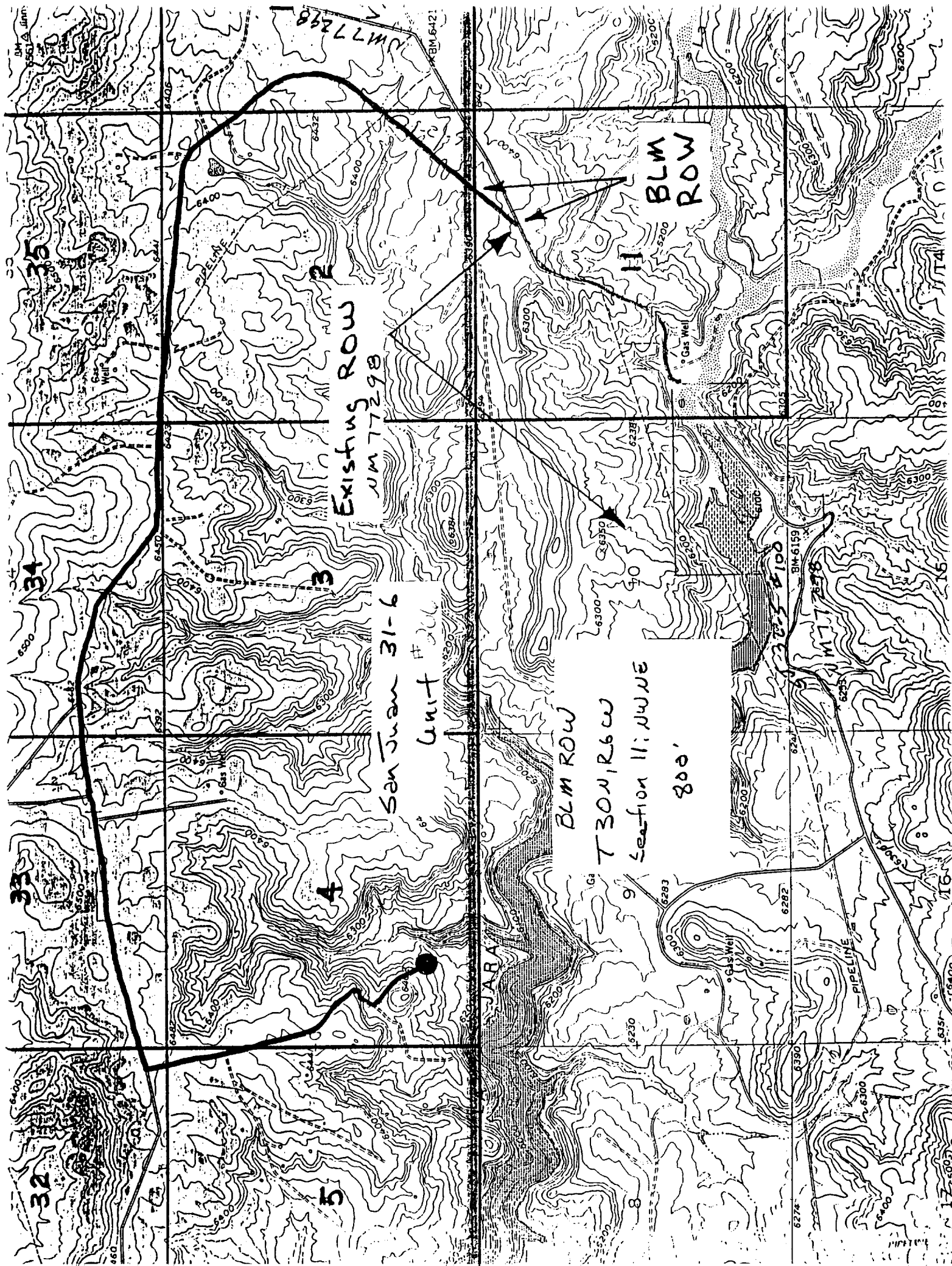
*[Signature]*  
Date Surveyed

11-22-88

Registered Professional Engineer  
and/or Land Surveyor

Neale C. Edwards

Certificate No.  
6857



San Juan 31-6  
Unit # 306

Existing ROW  
UM 77298

BLM  
ROW

BLM ROW

T30N, R6W

Section 11, 11WNE

800'

5

4

3

2

8

9

40

11

17-65003

BM 6301

BM 6159

UM 77298

UM 77298

UM 77298

UM 77298

UM 77298

UM 77298

UM 77298