

UNITED STATES  
DEPARTMENT OF THE INTERIOR  
GEOLOGICAL SURVEY

30-039-24448

APPLICATION FOR PERMIT TO DRILL, DEEPEN, OR PLUG BACK

1a. TYPE OF WORK

DRILL ☒

DEEPEN ☐

PLUG BACK ☐

b. TYPE OF WELL

OIL WELL ☐

GAS WELL ☒

OTHER

SINGLE ZONE ☒

MULTIPLE ZONE ☐

2. NAME OF OPERATOR

Blackwood & Nichols Co., LTD

3. ADDRESS OF OPERATOR

P.O. Box 1237, Durango, CO 81302-1237

4. LOCATION OF WELL (Report location clearly and in accordance with any State requirements.)\*

At surface

1650'FNL - 1160'FEL

At proposed prod. zone

14. DISTANCE IN MILES AND DIRECTION FROM NEAREST TOWN OR POST OFFICE\*

13.5 miles NE of Blanco, New Mexico

15. DISTANCE FROM PROPOSED\*

LOCATION TO NEAREST PROPERTY OR LEASE LINE, FT.  
(Also to nearest drlg. unit line, if any)

1160'

16. NO. OF ACRES IN LEASE

2236.44

17. NO. OF ACRES ASSIGNED TO THIS WELL

320

18. DISTANCE FROM PROPOSED LOCATION\*

TO NEAREST WELL, DRILLING, COMPLETED, OR APPLIED FOR, ON THIS LEASE, FT.

100'

19. PROPOSED DEPTH

3244'

20. ROTARY OR CABLE TOOLS

Rotary

21. ELEVATIONS (Show whether DF, RT, GR, etc.)

6336' GL

22. APPROX. DATE WORK WILL START\*

May 1, 1989

23.

PROPOSED CASING AND CEMENTING PROGRAM

DRILLING OPERATIONS AUTHORIZED ARE  
SUBJECT TO COMPLIANCE WITH ATTACHED  
"GENERAL REQUIREMENTS"

SIZE OF HOLE	SIZE OF CASING	WEIGHT PER FOOT	SETTING DEPTH	
12 1/4"	9 5/8"	36#	300'	207 cuft to circulate
8 3/4"	7"	23#	3042'	744 cuft to circulate
6 1/4"	5 1/2"	17#	2942' - 3244'	39 cuft to circulate

Propose to spud in the San Jose formation. Will drill a 12 1/4" hole to a TD of 300'. Surface casing will be run and cemented with cement returns to surface. WOC 12 hours. Pressure test to 600 psi/30 mins. Drill an 8 3/4" hole to a TD of 3042' with fresh water mud. No abnormal pressures or poisonous gases are anticipated. Run and cement intermediate casing with cement returns to surface. WOC 12 hours. Test to 1500 psi/30 mins. Drill a 6 1/4" hole through the Fruitland coals using water and air. A 5 1/2" liner will be run. The liner may or may not be cemented, depending on the wells natural producing ability.

Surface ownership is BLM.

RECEIVED  
MAY 22 1989

OIL CON. DIV.  
DIST. 8

IN ABOVE SPACE DESCRIBE PROPOSED PROGRAM: If proposal is to deepen or plug back, give data on present productive zone and proposed new productive zone. If proposal is to drill or deepen directionally, give pertinent data on subsurface locations and measured and true vertical depths. Give blowout preventer program, if any.

24.

SIGNED

*William F. Clark*

TITLE

Operations Manager

DATE

*May 11 1989*

(This space for Federal or State office use)

PERMIT

APPROVAL DATE

APPROVED BY

TITLE

DATE

CONDITIONS OF APPROVAL, IF ANY:

\*See Instructions On Reverse Side

*John Della*  
FOR AREA

RECEIVED  
MAY 22 1989  
OIL CON. DIV.  
DIST. 8  
FARMING  
FARMING  
FARMING

## OIL CONSERVATION DIVISION

P.O. Box 2088  
Santa Fe, New Mexico 87504-2088

**DISTRICT II**  
P.O. Drawer DD, Artesia, NM 88210

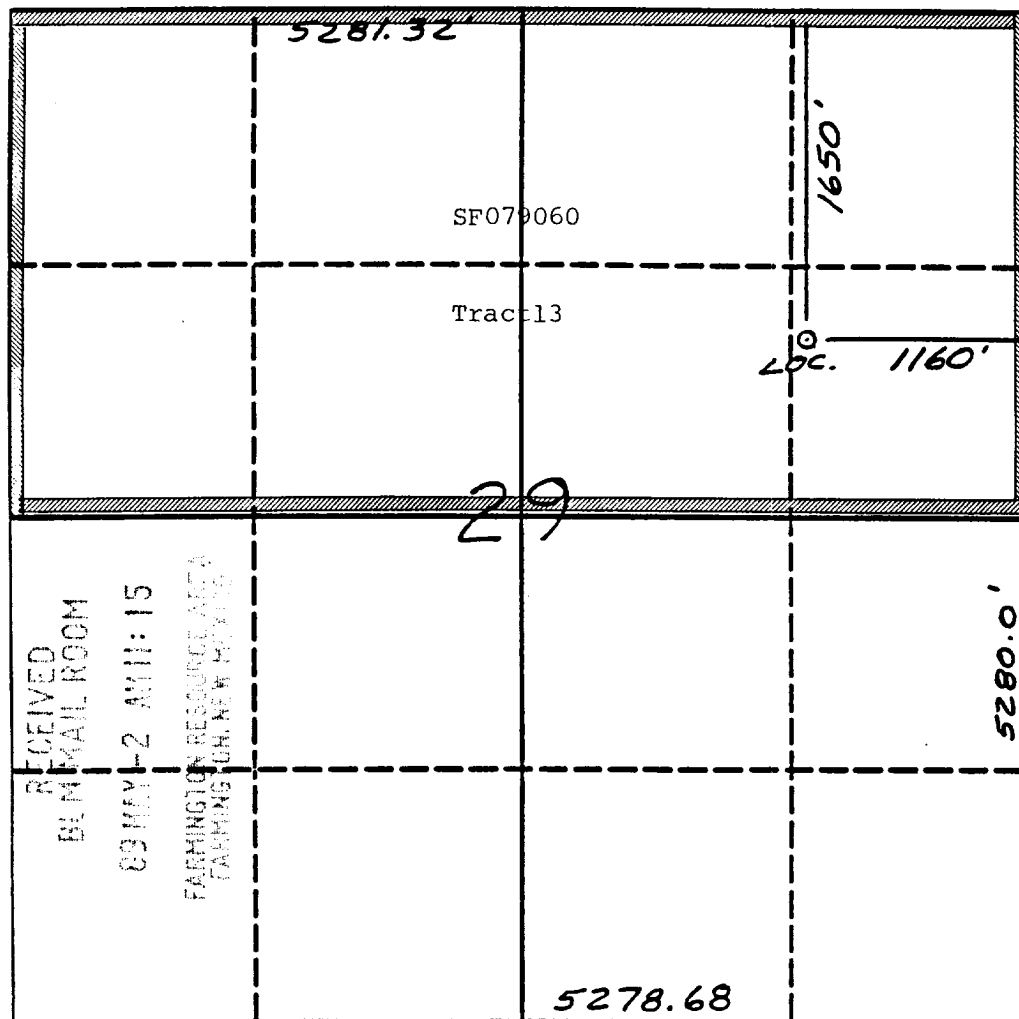
**DISTRICT III**  
1000 Rio Brazos Rd., Aztec, NM 87410

# WELL LOCATION AND ACREAGE DEDICATION PLAT

**All Distances must be from the outer boundaries of the section**

Operator Blackwood & Nichols Co. LTD.		Lease Northeast Blanco Unit		Well No. 477
Unit Letter H	Section 29	Township 30 North	Range 7 West	County NMPM Rio Arriba
Actual Footage Location of Well: 1650 feet from the North line and 1160 feet from the East line				
Ground level Elev. 6336'	Producing Formation Fruitland Coal	Pool Basin Fruitland Coal	Dedicated Acreage: 320 Acres	

1. Outline the acreage dedicated to the subject well by colored pencil or hectare marks on the plat below.
2. If more than one lease is dedicated to the well, outline each and identify the ownership thereof (both as to working interest and royalty).
3. If more than one lease of different ownership is dedicated to the well, have the interest of all owners been consolidated by communitization, unitization, force-pooling, etc.?
- ☐ Yes      ☐ No      If answer is "yes" type of consolidation NA
- If answer is "no" list the owners and tract descriptions which have actually been consolidated. (Use reverse side of this form if necessary.)
- No allowable will be assigned to the well until all interests have been consolidated (by communitization, unitization, forced-pooling, or otherwise) or until a non-standard unit, eliminating such interest, has been approved by the Division.



### OPERATOR CERTIFICATION

I hereby certify that the information contained herein is true and complete to the best of my knowledge and belief.

Signature William F. Clark  
Printed Name William F. Clark

Position	Operations Manager
----------	--------------------

Company
Blackwood & Nichols Co.



Date May 1, 1989

## SURVEYOR CERTIFICATION

I hereby certify that the well location shown on this plat was plotted from field notes of actual surveys made by me or under my supervision, and that the same is true and correct to the best of my knowledge and belief.

Date Surveyed  
Neale C. Edwards  
Signature & Seal of  
Professional Surveyor

Certificate No. 6857

Blackwood & Nichols Co., LTD  
Northeast Blanco Unit No. 477  
1650'FNL - 1160'FEL  
Section 29, T30N, R7W  
San Juan Co., New Mexico  
Proposed Location:   
Existing Access Road:   
Proposed New Access Road: 