

38-139-24466

5. LEASE DESIGNATION AND SERIAL NO.  
SF079060

6. IF INDIAN, ALLOTTEE OR TRIBE NAME

7. UNIT AGREEMENT NAME  
Northeast Blanco

8. FARM OR LEASE NAME  
Northeast Blanco Unit

9. WELL NO.  
475

10. FIELD AND POOL, OR WILDCAT  
Basin Fruitland Coal

11. SEC., T., R., M., OR BLK.  
AND SURVEY OR AREA  
J Sec. 19, T30N, R7W

12. COUNTY OR PARISH  
San Juan

13. STATE  
NM

1. TYPE OF WORK  
a. TYPE OF WELL  
OIL WELL ☐ GAS WELL ☒ OTHER ☐  
b. TYPE OF WELL  
OIL WELL ☐ GAS WELL ☒ OTHER ☐  
2. NAME OF OPERATOR  
Blackwood & Nichols Co., LTD  
3. ADDRESS OF OPERATOR  
P.O. Box 1237, Durango, CO 81302-1237  
4. LOCATION OF WELL (Report location clearly and in accordance with any State requirements.\*)  
At surface  
1470' FSL ± 1760' FEL  
At proposed prod. zone  
14. DISTANCE IN MILES AND DIRECTION FROM NEAREST TOWN OR POST OFFICE\*  
13 miles NE of Blanco, New Mexico  
15. DISTANCE FROM PROPOSED\*  
LOCATION TO NEAREST  
PROPERTY OR LEASE LINE, FT.  
(Also to nearest drlg unit line, if any)  
900'  
16. NO. OF ACRES IN LEASE  
2236.44  
17. NO. OF ACRES ASSIGNED  
TO THIS WELL 320  
18. DISTANCE FROM PROPOSED LOCATION\*  
TO NEAREST WELL, DRILLING, COMPLETED,  
OR APPLIED FOR, ON THIS LEASE, FT.  
36'  
19. PROPOSED DEPTH  
3180'  
20. ROTARY OR CABLE TOOLS  
Rotary  
21. ELEVATIONS (Show whether DF, RT, GR, etc.)  
6292' GL  
22. APPROX. DATE WORK WILL START\*  
May 1, 1989

SIZE OF HOLE	SIZE OF CASING	WEIGHT PER FOOT	SETTING DEPTH	GENERAL REQUIREMENTS
12 1/4"	9 5/8"	36#	625'	401 cuft to circulate
8 3/4"	7"	23#	2950'	744 cuft to circulate
6 1/4"	5 1/2"	17#	2850'-3180'	39 cuft to circulate

Propose to spud in the San Jose formation. Will drill a 12 1/4" hole to a TD of 625'. Surface casing will be run and cemented with cement returns to surface. WOC 12 hours. Pressure test to 600 psi/30 mins. Drill an 8 3/4" hole to a TD of 2950' with fresh water mud. No abnormal pressures or poisonous gases are anticipated. Run and cement intermediate casing with cement returns to surface. WOC 12 hours. Test to 1500 psi/30 mins. Drill a 6 1/4" hole through the Fruitland coals using water and air. A 5 1/2" liner will be run. The liner may or may not be cemented, depending on the wells natural producing ability. The same rig will be used to drill and complete the well to reduce the amount of time the road closure will be in effect. If a high natural flow is encountered, the well will be mudded up or a snubbing unit installed for running the production liner.

Surface ownership is Bureau of Reclamation.

IN ABOVE SPACE DESCRIBE PROPOSED PROGRAM: If proposal is to deepen or plug back, give data on present production zone, and proposed new productive zone. If proposal is to drill or deepen directionally, give pertinent data on subsurface locations and measured and true vertical depths. Give blowout preventer program, if any.

24. SIGNED William F. Hall TITLE Operations Manager DATE May 1, 1989  
(This space for Federal or State office use)  
APPROVAL DATE \_\_\_\_\_  
TITLE \_\_\_\_\_  
CONDITIONS OF APPROVAL, IF ANY:

RECEIVED  
JUN 15 1989  
OIL CON. DIV.  
DIST. 3

APPROVED  
AS AMENDED  
JUN 12 1989  
Joel Farrell  
FOR AREA MANAGER

\*See Instructions On Reverse Side

OIL CONSERVATION DIVISION

P.O. Box 2088  
Santa Fe, New Mexico 87504-2088

DISTRICT I  
P.O. Box 1980, Hobbs, NM 88240

DISTRICT II  
P.O. Drawer DD, Artesia, NM 88210

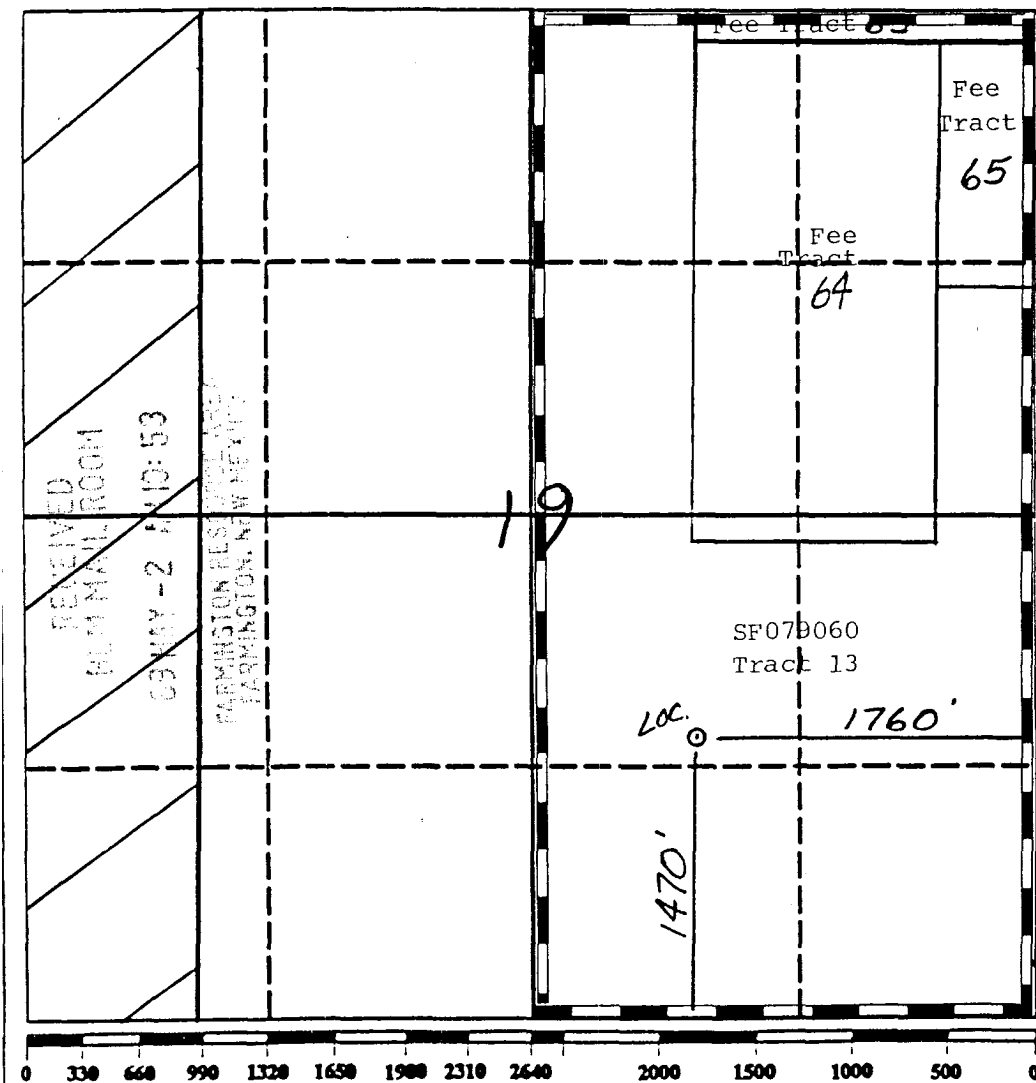
DISTRICT III  
1000 Rio Brazos Rd., Aztec, NM 87410

WELL LOCATION AND ACREAGE DEDICATION PLAT

All Distances must be from the outer boundaries of the section

Operator Blackwood & Nichols Co., LTD.		Lease Northeast Blanco Unit		Well No. 475
Unit Letter J	Section 19	Township 30 North	Range 7 West NMPM	County Rio Arriba
Actual Footage Location of Well: 1470 feet from the South line and 1760 feet from the East line				
Ground level Elev. 6292'	Producing Formation Fruitland Coal	Pool Basin Fruitland Coal	Dedicated Acreage: 320 Acres	

- Outline the acreage dedicated to the subject well by colored pencil or hatchure marks on the plat below.
- If more than one lease is dedicated to the well, outline each and identify the ownership thereof (both as to working interest and royalty).
- If more than one lease of different ownership is dedicated to the well, have the interest of all owners been consolidated by communitization, unitization, force-pooling, etc?  
☒ Yes ☐ No If answer is "yes" type of consolidation Unitization  
If answer is "no" list the owners and tract descriptions which have actually been consolidated. (Use reverse side of this form if necessary.)  
No allowable will be assigned to the well until all interests have been consolidated (by communitization, unitization, forced-pooling, or otherwise) or until a non-standard unit, eliminating such interest, has been approved by the Division.



OPERATOR CERTIFICATION

I hereby certify that the information contained herein is true and complete to the best of my knowledge and belief.

Signature William F. Clark  
Printed Name William F. Clark  
Position Operations Manager  
Company Blackwood & Nichols Co.  
Date May 1, 1989

SURVEYOR CERTIFICATION

I hereby certify that the well location shown on this plat was plotted from field notes of actual surveys made by me or under my supervision, and that the same is true and correct to the best of my knowledge and belief.

Date Surveyed 4-14-89  
Signature of Professional Surveyor Neale C. Edwards  
Seal of Professional Surveyor

Certificate No. 6857

