

UNITED STATES
DEPARTMENT OF THE INTERIOR
BUREAU OF LAND MANAGEMENT

APPLICATION FOR PERMIT TO DRILL, DEEPEN, OR PLUG BACK

1a. TYPE OF WORK

DRILL ☒

DEEPEN ☐

PLUG BACK ☐

b. TYPE OF WELL

OIL
WELL ☐

GAS
WELL ☒

OTHER ☐

2. NAME OF OPERATOR

El Paso Natural Gas *MOS*

3. ADDRESS OF OPERATOR

PO Box 4289, Farmington, NM 87499

4. LOCATION OF WELL (Report location clearly and in accordance with any State requirements.)

At *2560' N, 2610' W*

At proposed prod. zone

14. DISTANCE IN MILES AND DIRECTION FROM NEAREST TOWN OR POST OFFICE*

16 miles from Gobernador, NM

10. DISTANCE FROM PROPOSED*

LOCATION TO NEAREST
PROPERTY OR LEASE LINE, FT.
(Also to nearest drig. unit line, if any)

2560'

16. NO. OF ACRES IN LEASE

640

17. NO. OF ACRES ASSIGNED

W 320.00

13. DISTANCE FROM PROPOSED LOCATION*
TO NEAREST WELL, DRILLING, COMPLETED,
OR APPLIED FOR, ON THIS LEASE, FT.

1000'

19. PROPOSED DEPTH

3028'

20. ROTARY OR CABLE TOOLS

Rotary

21. ELEVATION (Show whether DF, RT, GR, etc.)

6195' GL

22. APPROX. DATE WORK WILL START*

23. PROPOSED CASING AND CEMENTING PROGRAM

SIZE OF HOLE	SIZE OF CASING	WEIGHT PER FOOT	SETTING DEPTH	QUANTITY OF CEMENT
12 1/4"	9 5/8"	32.3#	200'	125 cf. circulated
8 3/4"	7"	20.0#	2777'	242 cf circ. surface
6 1/4"	5 1/2" liner	15.5#	3028'	do not cement

The Fruitland coal formation will be completed.

A 3000 psi WP and 6000 psi test double gate preventer equipped with blind and pipe rams will be used for blow out prevention on this well.

This gas is dedicated.

The W/2 of Section 15 is dedicated to this well.

RECEIVED

JUL 0 6 1989

OIL CON. DIV.
DIST. 3

IN ABOVE SPACE DESCRIBE PROPOSED PROGRAM: If proposal is to deepen or plug back, give data on present productive zone and proposed new productive zone. If proposal is to drill or deepen directionally, give pertinent data on subsurface locations and measured and true vertical depths. Give blowout preventer program, if any.

24. *[Signature]* TITLE Regulatory Affairs DATE 11-15-88

(This space for Federal or State office use)

PERMIT NO. _____ APPROVAL DATE _____

APPROVED BY _____ TITLE _____ DATE _____

CONDITIONS OF APPROVAL, IF ANY:

APPROVED
AS AMENDED

JUN 30 1989

AREA MANAGER

All distances must be from the outer boundaries of the Section.

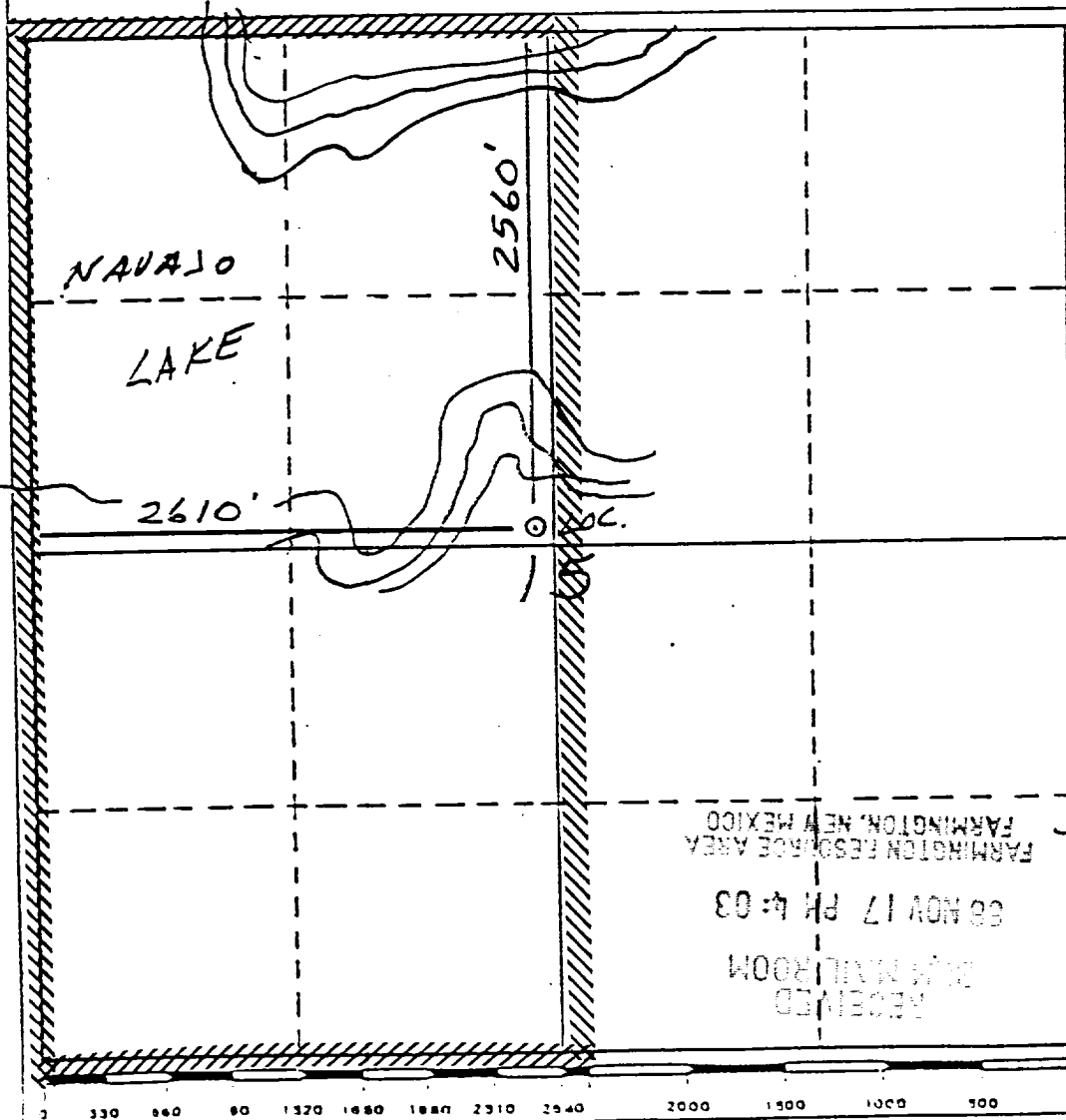
Operator El Paso Natural Gas <i>MOI</i>		Lease San Juan 30-6 Unit (NM-012710)		Well No. 406 R
Unit Letter F	Section 15	Township 30 North	Range 7 West	County Rio Arriba
Actual Footage Location of Wells 2560 feet from the North line and 2610 feet from the West line				
Ground Level Elev. 6195	Producing Formation Fruitland Coal	Pool Basin	Dedicated Acreage: 320 Acres	

1. Outline the acreage dedicated to the subject well by colored pencil or hachure marks on the plat below.
2. If more than one lease is dedicated to the well, outline each and identify the ownership thereof (both as to working interest and royalty).
3. If more than one lease of different ownership is dedicated to the well, have the interests of all owners been consolidated by communitization, unitization, force-pooling, etc?

☒ Yes ☐ No If answer is "yes," type of consolidation unitization

If answer is "no," list the owners and tract descriptions which have actually been consolidated. (Use reverse side of this form if necessary.)

No allowable will be assigned to the well until all interests have been consolidated (by communitization, unitization, forced-pooling, or otherwise) or until a non-standard unit, eliminating such interests, has been approved by the Division.



CERTIFICATION

I hereby certify that the information contained herein is true and complete to the best of my knowledge and belief.

Robert C. Edwards

Name
Regulatory Affairs

Position
El Paso Natural Gas

Company
11-19-88

Date

I hereby certify that the location shown on this plat was plotted from the notes of actual surveys made by me under supervision, and that the same is true and correct to the best of my knowledge and belief.

Robert C. Edwards

Date Surveyed
9-22-88

Registered Professional Engineer
and/or Land Surveyor

Neale C. Edwards

Certificate No.
6857

