

UNITED STATES
DEPARTMENT OF THE INTERIOR
BUREAU OF LAND MANAGEMENT

SUNDRY NOTICES AND REPORTS ON WELLS

1. TYPE OF WELL GAS		5. LEASE NUMBER SF-080712A	
2. OPERATOR <i>Meridian</i> EL PASO NATURAL GAS CO.		6. IF INDIAN, ALL. OR TRIBE NAME	
3. ADDRESS & PHONE NO. OF OPERATOR P O BOX 4289 FARMINGTON, NM 87499		7. UNIT AGREEMENT NAME SAN JUAN 30-6 UNIT	
4. LOCATION OF WELL 2510'S 790'W		8. FARM OR LEASE NAME SAN JUAN 30-6 UNIT	
		9. WELL NO. 475	
		10. FIELD, POOL, OR WILDCAT BASIN FRUITLAND COAL	
		11. SEC. T. R. M OR BLK. SEC. 27 T30N R06W NMPM	
14. PERMIT NO.	15. ELEVATIONS 6426'GL	12. COUNTY RIO ARRIBA	13. STATE NM
16. NOTICE OF INTENTION TO: Change Plans			
17. Describe proposed or completed operations			

Attached is a revised operations plan, BOPE diagram and anticipated production facilities diagram on the subject well.

RECEIVED

APR 02 1990

OIL CON. DIV.
DIST. 3

18. AUTHORIZED BY:

J. D. Felt
REGULATORY AFFAIRS

9/9/89
DATE

NOTE: THIS FORMAT IS ISSUED IN LIEU OF US BLM FORM 3160-5.

=====

(This space for Federal or State office use)

APPROVED BY _____
CONDITION OF APPROVAL, IF ANY:

TITLE _____

DATE _____

445000

Well Name: 475 SAN JUAN 30-6 UNIT 2510'S 790'W
 Sec. 27 T30N R06W RIO ARRIBA NEW MEXICO
 BASIN FRUITLAND COAL Elevation 6426'GL

Formation tops: Surface- SAN JOSE

Ojo Alamo- 2392
 Kirtland- 2588
 Fruitland- 2963
 Fruitland Coal Top- 3155
 Fruitland Coal Base- 3361
 Total Depth- 3362
 Pictured Cliffs- 3374

Logging Program: Mud logs from 2963 to total depth.

Mud Program:	Interval	Type	Weight Spud	Weight Non-dispersed	Visc.	Fl. Loss
	0 - 200		8.4 - 8.9		40-50	no control
	200 - 3362		8.4 - 9.5		30-60	no control

Casing Program:	Hole Size	Depth	Interval	Csg. Size	Weight	Grade
	12 1/4"	0 - 200		8 5/8"	24.0#	K-40
	7 7/8"	0 - 3362		5 1/2"	15.5#	K-55
Tubing Program:		0 - 3362		2 3/8"	4.7#	J-55

Float Equipment: 8 5/8" surface casing - saw tooth guide shoe.

5 1/2" production casing - float shoe on bottom.

Three centralizers run every other joint above shoe.

Wellhead Equipment: 8 5/8" x 5 1/2" x 2 3/8" x 11" 3000 psi xmas tree assembly.

Cementing:

8 5/8" surface casing - cement with 140 sacks of class "B" cement with 1/4# floccule/sack and 3% calcium chloride (165 cu ft. of slurry, 100% excess to circulate to surface). WOC 12 hours. Test casing to 600 psi for 30 minutes.

5 1/2" production casing - lead with 113 sacks of 65/35 class "B" poz with 6% gel, 2% calcium chloride and 1/2 cu.ft. Perlite/sack (10.3 gallons of water/sack) tail with 100 sacks of class "B" with 2% calcium chloride. 336 cu ft. of slurry, 100% excess to cover the Ojo Alamo. Run temperature survey at 8 hours. WOC 12 hours. Test casing to 1500 psi for 30 minutes.

BOP and Tests:

Surface to TD - 11" 2000 psi(minimum) double gate BOP stack

From surface to TD - choke manifold (Reference Figure #3).

Pipe rams will be actuated at least once each day and blind rams actuated once each trip to test proper functioning. A Kelly cock valve and drill string safety valves to fit each drill string will be maintained and available on the rig floor.

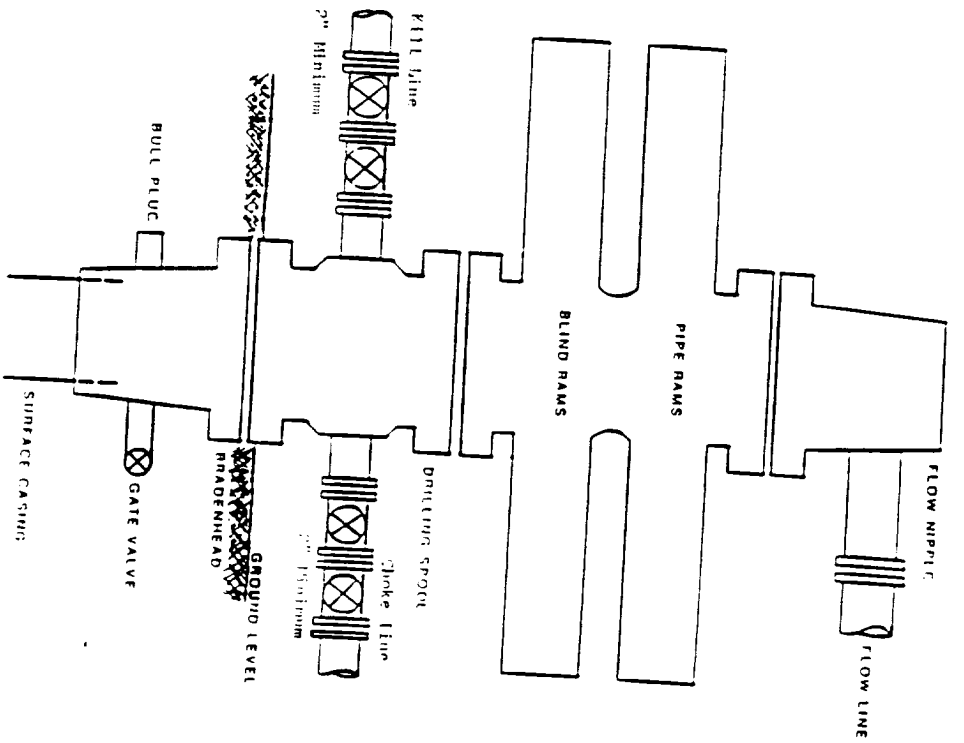
Addition Information:

The Fruitland coal formation will be completed.

This gas is dedicated.

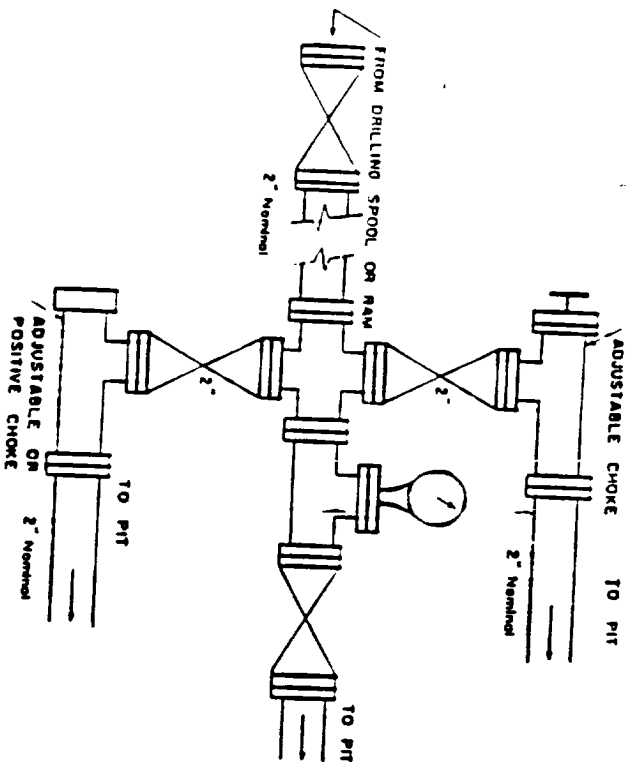
The W/2 of Section 27 is dedicated to this well.

FIGURE #1



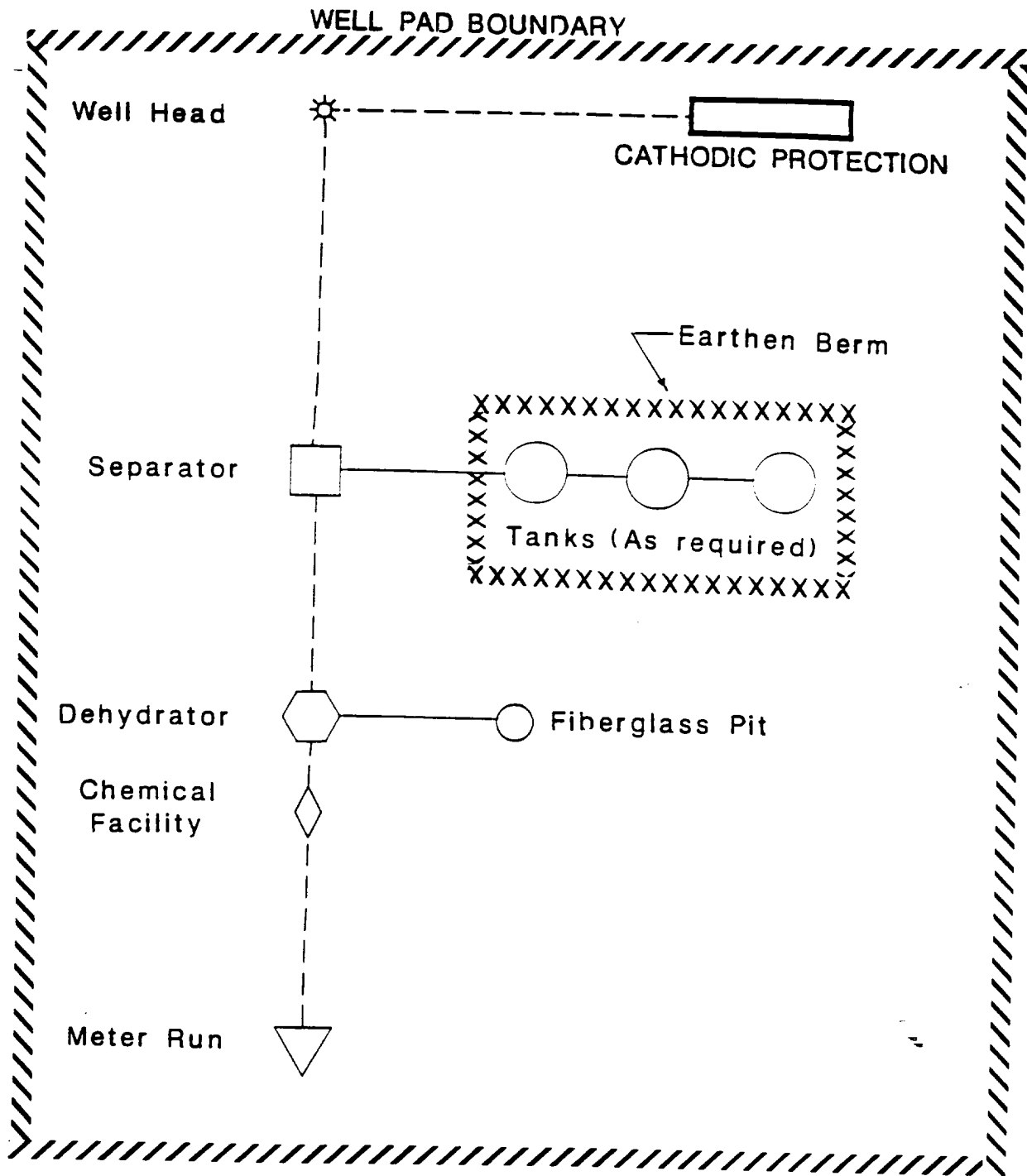
Minimum POE Installation for a typical Fruitland Coal well from surface to Total Depth, 11", 2000 psi working pressure double gate BOP equipped with blind and pipe rams.

FIGURE #3



Minimum choke manifold configuration for a typical Fruitland Coal well from surface to TD, 2", 2000 psi working pressure equipment with two chokes.

LONG STRING FCCU BOP
UP04200 9/8/91



MERIDIAN OIL

ANTICIPATED
PRODUCTION FACILITIES
FOR A
FRUITLAND WELL

J. Falconi

4/28/89