

UNITED STATES
DEPARTMENT OF THE INTERIOR
GEOLOGICAL SURVEY

SUBMIT IN TRIPLICATE*
(Other instructions on
reverse side)

Form approved.
Budget Bureau No. 42-R1425.

30-039-24490

APPLICATION FOR PERMIT TO DRILL, DEEPEN, OR PLUG BACK

1a. TYPE OF WORK
 DRILL ☒ DEEPEN ☐ PLUG BACK ☐
 b. TYPE OF WELL
 OIL WELL ☐ GAS WELL ☒ OTHER ☐ SINGLE ZONE ☒ MULTIPLE ZONE ☐

2. NAME OF OPERATOR
 Blackwood & Nichols Co., LTD

3. ADDRESS OF OPERATOR
 P.O. Box 1237, Durango, CO 81302-1237

4. LOCATION OF WELL (Report location clearly and in accordance with any State requirements.*)
 At surface
 2510'FSL - 1640'FWL
 At proposed prod. zone

14. DISTANCE IN MILES AND DIRECTION FROM NEAREST TOWN OR POST OFFICE*
 13.5 miles NE of Blanco, New Mexico

15. DISTANCE FROM PROPOSED*
 LOCATION TO NEAREST
 PROPERTY OR LEASE LINE, FT.
 (Also to nearest drig. unit line, if any) 300'

18. DISTANCE FROM PROPOSED LOCATION*
 TO NEAREST WELL, DRILLING, COMPLETED,
 OR APPLIED FOR, ON THIS LEASE, FT. 75'

21. ELEVATIONS (Show whether DF, RT, GR, etc.)
 6313' CL

23. PROPOSED CASING AND CEMENTING PROGRAM

SIZE OF HOLE	SIZE OF CASING	WEIGHT PER FOOT	SETTING DEPTH
12 1/4"	9 5/8"	36#	300'
8 3/4"	7"	23#	3435'

5. LEASE DESIGNATION AND SERIAL NO.
 SF079060
 6. IF INDIAN, ALLOTTEE OR TRIBE NAME
 7. UNIT AGREEMENT NAME
 Northeast Blanco
 8. FARM OR LEASE NAME
 Northeast Blanco Unit
 9. WELL NO.
 479
 10. FIELD AND POOL, OR WILDCAT
 Basin Fruitland Coal
 11. SEC., T., E., M., OR BLK.
 AND SURVEY OR AREA
 Sec. 20, T30N, R7W
 12. COUNTY OR PARISH
 Blaine
 13. STATE
 NM

17. NO. OF ACRES ASSIGNED
 TO THIS WELL
 320.15

20. ROTARY OR CABLE TOOLS
 Rotary

22. APPROX. DATE WORK WILL START*
 May 1, 1989

This action is subject to technical and
 procedural review pursuant to 43 CFR 3165.3
 and appeal pursuant to 43 CFR 3165.4.

DRILLING OPERATIONS AUTHORIZED ARE
 SUBJECT TO COMPLIANCE WITH ATTACHED
 GENERAL REQUIREMENTS

Propose to spud in the San Jose formation. Will drill a 12 1/4" hole to a TD of 300'. Surface casing will be run and cemented with cement returns to surface. WOC 12 hours. Test to 600 psi. Drill an 8 3/4" hole with fresh water mud to TD of 3435'. No poisonous gas is anticipated. Weighted mud will be used to drill the Fruitland coals. Logs will be run at TD. Casing will be run and cemented in two stages with cement returns to surface. The drilling rig will be released and a completion unit moved on. Cased hole bond and correlation logs will be run. The Fruitland coal intervals will be perforated and frac'd with a fresh water base gel fluid.

RECEIVED

JUL 12 1989

OIL CON. DIV

IN ABOVE SPACE DESCRIBE PROPOSED PROGRAM: If proposal is to deepen or plug back, give data on present productive zone and proposed new productive zone. If proposal is to drill or deepen directionally, give pertinent data on subsurface locations and measurements and true vertical depths. Give blowout prevention program, if any.

SIGNED William F. Clark TITLE Operations Manager DATE May 1, 1989

(This space for Federal or State office use)

PERMIT NO. _____ APPROVAL DATE _____

APPROVED BY _____ TITLE _____

CONDITIONS OF APPROVAL, IF ANY:

APPROVED
 AS AMENDED

DATE

NMOC

*See Instructions On Reverse Side

JUL 10 1989
 AREA MANAGER

OIL CONSERVATION DIVISION

P.O. Box 2088
Santa Fe, New Mexico 87504-2088

DISTRICT I
P.O. Box 1980, Hobbs, NM 88240

DISTRICT II
P.O. Drawer DD, Artesia, NM 88210

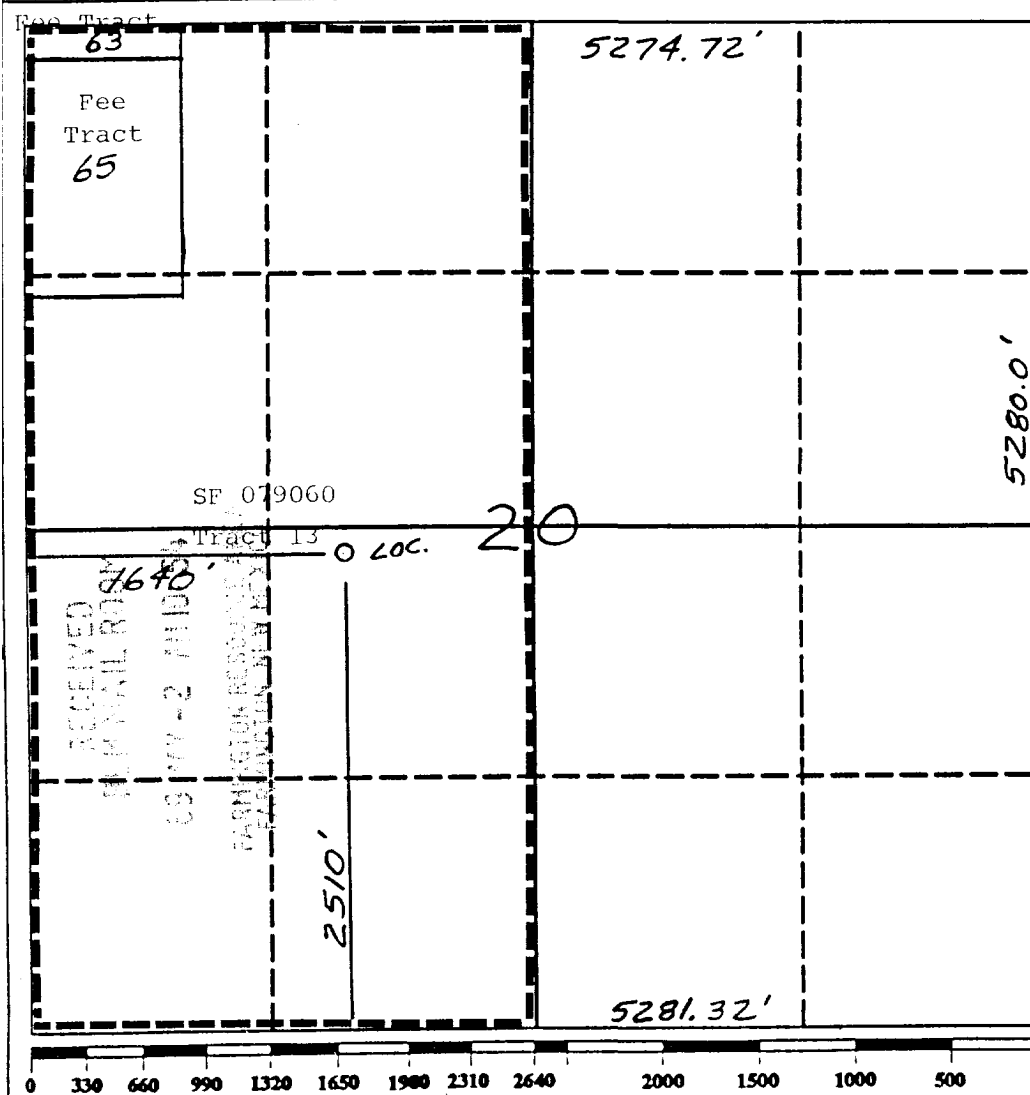
DISTRICT III
1000 Rio Brazos Rd., Aztec, NM 87410

WELL LOCATION AND ACREAGE DEDICATION PLAT

All Distances must be from the outer boundaries of the section

Operator Blackwood & Nichols Co. LTD.		Lease Northeast Blanco Unit		Well No. 479
Unit Letter K	Section 20	Township 30 north	Range 7 West NMPM	County Rio Arriba
Actual Footage Location of Well: 2510 feet from the South line and 1640 feet from the West line				
Ground level Elev. 6313'	Producing Formation Fruitland Coal		Pool Basin Fruitland Coal	Dedicated Acreage: 320.15 Acres

- Outline the acreage dedicated to the subject well by colored pencil or hatchure marks on the plat below.
- If more than one lease is dedicated to the well, outline each and identify the ownership thereof (both as to working interest and royalty).
- If more than one lease of different ownership is dedicated to the well, have the interest of all owners been consolidated by communitization, unitization, force-pooling, etc?
☒ Yes ☐ No If answer is "yes" type of consolidation Unitization
If answer is "no" list the owners and tract descriptions which have actually been consolidated. (Use reverse side of this form if necessary.)
No allowable will be assigned to the well until all interests have been consolidated (by communitization, unitization, forced-pooling, or otherwise) or until a non-standard unit, eliminating such interest, has been approved by the Division.



OPERATOR CERTIFICATION

I hereby certify that the information contained herein is true and complete to the best of my knowledge and belief.

Signature

Printed Name

William F. Clark

Position

Operations Manager

Company

Blackwood & Nichols Co.

Date

May 11, 1989

SURVEYOR CERTIFICATION

I hereby certify that the well location shown on this plat was plotted from field notes of actual surveys made by me or under my supervision, and that the same is true and correct to the best of my knowledge and belief.

4-14-89

Date Surveyed

Neale C. Edwards

Signature of Professional Surveyor

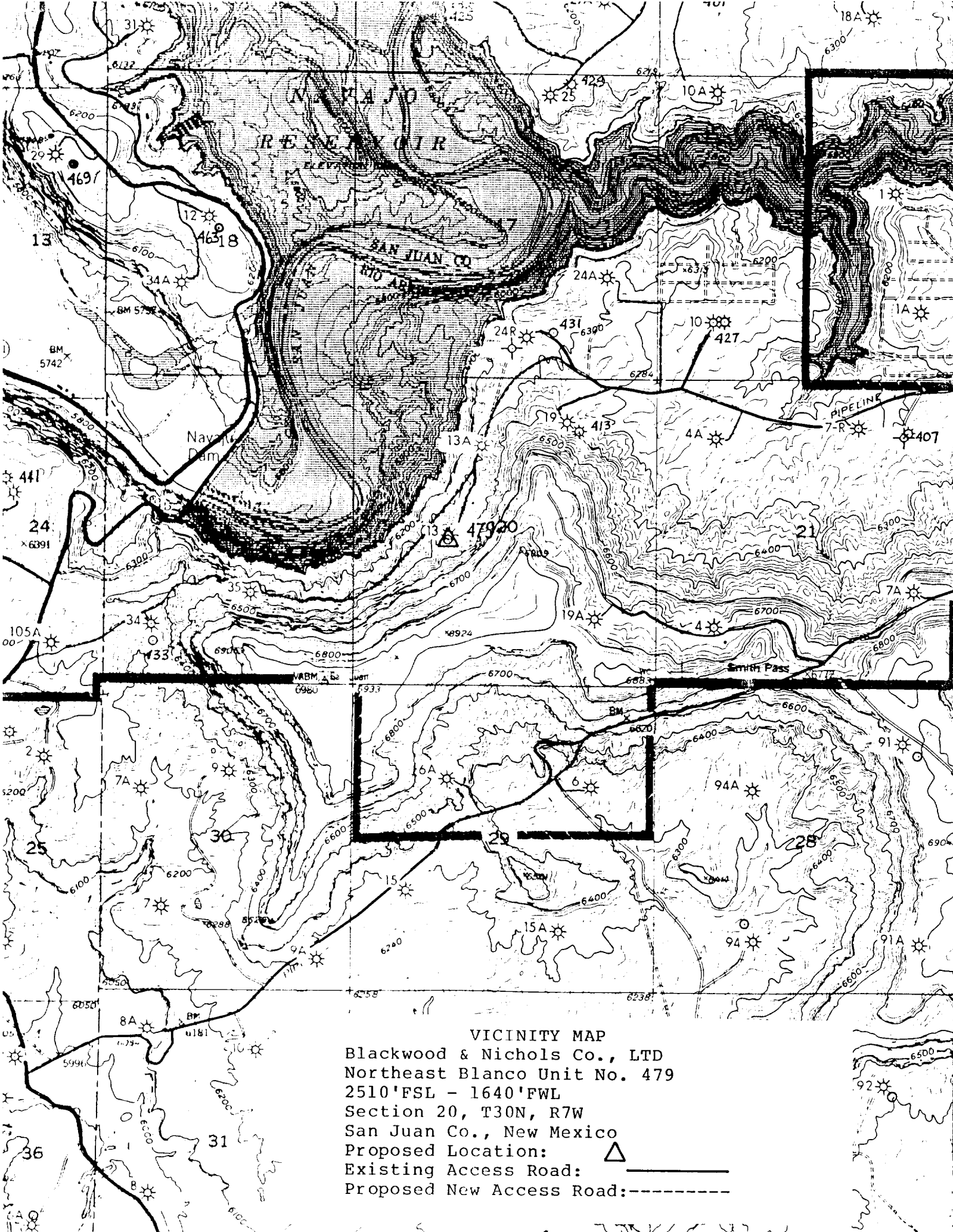
Professional Surveyor

6857

6857

Certificate No.

6857



VICINITY MAP


Blackwood & Nichols Co., LTD


Northeast Blanco Unit No. 479

2510' FSL - 1640' FWL

Section 20, T30N, R7W

San Juan Co., New Mexico

Proposed Location: 

Existing Access Road: 

Proposed New Access Road: 