

# OIL CONSERVATION DIVISION

P.O. Box 2088  
Santa Fe, New Mexico 87504-2088

DISTRICT I  
P.O. Box 1980, Hobbs, NM 88240

DISTRICT II  
P.O. Drawer DD, Artesia, NM 88210

DISTRICT III  
1000 Rio Brazos Rd., Aztec, NM 87410

## WELL LOCATION AND ACREAGE DEDICATION PLAT

All Distances must be from the outer boundaries of the section

Operator		Lease		Well No.	
Blackwood & Nichols Co. LTD.		Northeast Blanco Unit		405	
Unit Letter	Section	Township	Range	County	
M	21	30 North	7 West	NMPM Rio Arriba	
Actual Footage Location of Well:					
875 feet from the South line and		1145 feet from the West line			
Ground level Elev.	Producing Formation	Pool	Dedicated Acreage:		
6721	Pictured Cliffs	Undesignated	160 Acres		

1. Outline the acreage dedicated to the subject well by colored pencil or hectare marks on the plat below.

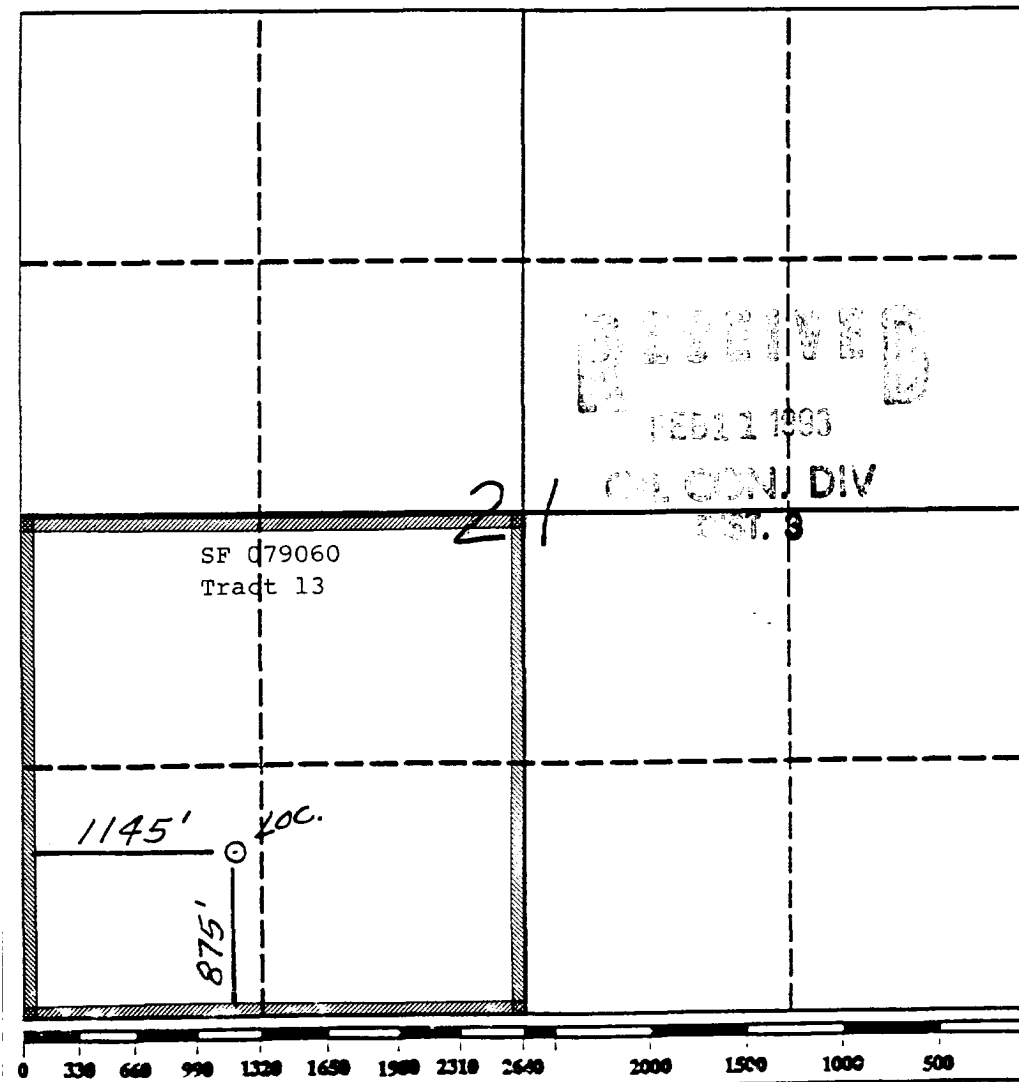
2. If more than one lease is dedicated to the well, outline each and identify the ownership thereof (both as to working interest and royalty).

3. If more than one lease of different ownership is dedicated to the well, have the interest of all owners been consolidated by communitization, unitization, force-pooling, etc.?

☐ Yes ☐ No If answer is "yes" type of consolidation N/A

If answer is "no" list the owners and tract descriptions which have actually been consolidated. (Use reverse side of this form if necessary.)

No allowable will be assigned to the well until all interests have been consolidated (by communitization, unitization, forced-pooling, or otherwise) or until a non-standard unit, eliminating such interest, has been approved by the Division.



### OPERATOR CERTIFICATION

I hereby certify that the information contained herein is true and complete to the best of my knowledge and belief.

Signature James K. Abbey  
Printed Name James K. Abbey  
Position Operations Engineer  
Company Blackwood & Nichols Co.  
Date 2-10-93

### SURVEYOR CERTIFICATION

I hereby certify that the well location shown on this plat was plotted from field notes of actual surveys made by me or under my supervision, and that the same is true and correct to the best of my knowledge and belief.

Date Surveyed 5-15-89  
Signature of Seal of NEALE O. EDWARDS  
Professional Surveyor  
Certificate No. 6857