

NO. OF COPIES RECEIVED	
DISTRIBUTION	
SANTA FE	
FILE	
U.S.G.S.	
LAND OFFICE	
OPERATOR	

## NEW MEXICO OIL CONSERVATION COMMISSION

Form O-101  
Revised 1-1-65

30-039-24514

5A. Indicate Type of Lease	
STATE <input checked="" type="checkbox"/>	FEE <input type="checkbox"/>
5B. State Oil & Gas Lease No.	
NM E347-39 & E347-38	

## APPLICATION FOR PERMIT TO DRILL, DEEPEN, OR PLUG BACK

1a. Type of Work		7. Unit Agreement Name	
b. Type of Well OIL WELL <input type="checkbox"/> GAS WELL <input checked="" type="checkbox"/> OTHER <input type="checkbox"/>		San Juan 31-6 Unit	
DRILL <input checked="" type="checkbox"/> DEEPEN <input type="checkbox"/> PLUG BACK <input type="checkbox"/>		8. Farm or Lease Name	
SINGLE ZONE <input type="checkbox"/> MULTIPLE ZONE <input type="checkbox"/>		San Juan 31-6 Unit	
2. Name of Operator		9. Well No.	
Northwest Pipeline Corporation		#211	
3. Address of Operator		10. Field and Pool, or Wildcat	
3539 East 30th Street - Farmington, NM 8401		Basin Fruitland Pool	
4. Location of Well		12. County	
UNIT LETTER N LOCATED 1040 FEET FROM THE South LINE		Rio Arriba	
AND 1850 FEET FROM THE West LINE OF SEC. 2 TWP. 30N RGE. 6W NMPM			
15. Proposed Depth		18A. Formation	
3164		Fruitland	
20. Rotary or C.T.		Rotary	
21. Elevations (Show whether DT, RT, etc.)		22. Approx. Date Work will start	
6357' GR		8-21-89	

23.

## PROPOSED CASING AND CEMENT PROGRAM

SIZE OF HOLE	SIZE OF CASING	WEIGHT PER FOOT	SETTING DEPTH	SACKS OF CEMENT	EST. TOP
13-1/2"	9-5/8"	36# K-55	500'	410 sx	Surface
8-3/4"	7"	20# K-55	2897'	83 sx	2191'
6-1/4"	5-1/2"	23# P110	2797'-3164'	None	

1) Plan to drill Fruitland Formation from 2917' to 3164' and complete open hole with a perforated liner in coal zones.

2) The east half of Section 2 is dedicated to this well.

RECEIVED

AUG 03 1989

OIL CON. DIV.  
DIST. 3

IN ABOVE SPACE DESCRIBE PROPOSED PROGRAM; IF PROPOSAL IS TO DEEPEN OR PLUG BACK, GIVE DATA ON PRESENT PRODUCTIVE ZONE AND PROPOSED NEW PRODUCTIVE ZONE. GIVE BLOWOUT PREVENTER PROGRAM, IF ANY.

I hereby certify that the information above is true and complete to the best of my knowledge and belief.

Signed J.R. Vaughan Title Prod. & Drlg. Engineer Date 8-2-89

APPROVED BY Ernie Busch TITLE DEPUTY OIL & GAS INSPECTOR, DIST #3 DATE AUG 03 1989

CONDITIONS OF APPROVAL, IF ANY:

APPROVAL EXPIRES 2-4-90  
UNLESS DRILLING IS COMMENCED.  
SPUD NOTICE MUST BE SUBMITTED  
WITHIN 10 DAYS

Submit to Appropriate  
District Office  
State Lease - 4 copies  
Fee Lease - 3 copies

State of New Mexico  
Energy, Minerals and Natural Resources Department

Form C-102  
Revised 1-1-89

OIL CONSERVATION DIVISION

P.O. Box 2088  
Santa Fe, New Mexico 87504-2088

DISTRICT I  
P.O. Box 1980, Hobbs, NM 88240

DISTRICT II  
P.O. Drawer DD, Artesia, NM 88210

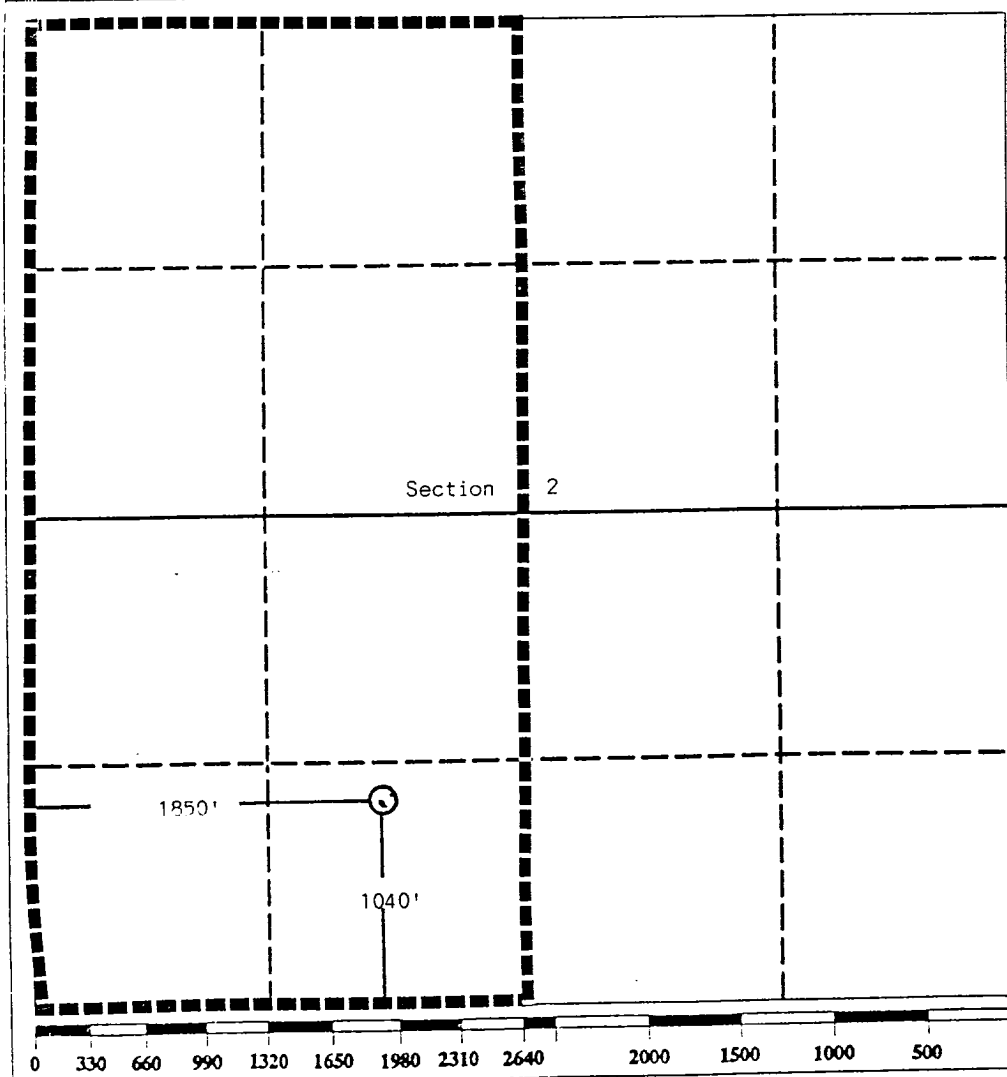
DISTRICT III  
1000 Rio Brazos Rd., Aztec, NM 87410

WELL LOCATION AND ACREAGE DEDICATION PLAT

All Distances must be from the outer boundaries of the section

Operator Northwest Pipeline Corporation			Lease San Juan 31-6		Well No. 211
Unit Letter N	Section 2	Township 30 North	Range 6 West	County Rio Arriba	
Actual Footage Location of Well: 1040 feet from the South line and 1850 feet from the West line					
Ground level Elev. 6357	Producing Formation Fruitland	Pool Basin Fruitland Pool		Dedicated Acreage: 320.19 Acres	

1. Outline the acreage dedicated to the subject well by colored pencil or hachure marks on the plat below.
2. If more than one lease is dedicated to the well, outline each and identify the ownership thereof (both as to working interest and royalty).
3. If more than one lease of different ownership is dedicated to the well, have the interest of all owners been consolidated by communitization, unitization, force-pooling, etc.?  
☒ Yes ☐ No If answer is "yes" type of consolidation Unitization  
If answer is "no" list the owners and tract descriptions which have actually been consolidated. (Use reverse side of this form if necessary.)  
No allowable will be assigned to the well until all interests have been consolidated (by communitization, unitization, forced-pooling, or otherwise) or until a non-standard unit, eliminating such interest, has been approved by the Division.



OPERATOR CERTIFICATION

I hereby certify that the information contained herein is true and complete to the best of my knowledge and belief.

Signature Jeff Vaughan  
Printed Name Jeff Vaughan  
Position Engineer  
Company Northwest Pipeline Corp.  
Date July 10, 1989

SURVEYOR CERTIFICATION

I hereby certify that the well location shown on this plat was plotted from field notes of actual surveys made by me or under my supervision, and that the same is true and correct to the best of my knowledge and belief.

Date Surveyed July 10, 1989

Signature Edgar L. Risenhoover  
Professional Seal of Surveyor  
5979  
Certificate No. 108976  
Edgar L. Risenhoover, L.S.

