

UNITED STATES
DEPARTMENT OF THE INTERIOR
BUREAU OF LAND MANAGEMENT

RECEIVED
MAIL ROOM

APPLICATION FOR PERMIT TO DRILL, DEEPEN, OR PLUG BACK

1a. TYPE OF WORK

DRILL ☒

DEEPEN ☐

PLUG BACK ☐

b. TYPE OF WELL

OIL
WELL ☐

GAS
WELL ☐

OTHER SWD

FARMINGTON RESOURCE AREA
FARMINGTON, NEW MEXICO
SINGLE ZONE ☐ MULTIPLE ZONE ☐

2. NAME OF OPERATOR

El Paso Natural Gas Company

3. ADDRESS OF OPERATOR

PO Box 4289, Farmington, NM 87499

4. LOCATION OF WELL (Report location clearly and in accordance with any State requirements.)
At surface 285' N, 590' W

At proposed prod. zone

14. DISTANCE IN MILES AND DIRECTION FROM NEAREST TOWN OR POST OFFICE*

4 miles east of Navajo Dam, NM

15. DISTANCE FROM PROPOSED*
LOCATION TO NEAREST
PROPERTY OR LEASE LINE, FT.
(Also to nearest drig. unit line, if any)

285'

16. NO. OF ACRES IN LEASE

Unit 2080

17. NO. OF ACRES ASSIGNED
TO THIS WELL

n/a

18. DISTANCE FROM PROPOSED LOCATION*
TO NEAREST WELL, DRILLING, COMPLETED,
OR APPLIED FOR, ON THIS LEASE, FT.

600'

19. PROPOSED DEPTH

8875'

20. ROTARY OR CABLE TOOLS

Rotary

21. ELEVATIONS (Show whether DF, RT, GR, etc.)
6263' GL

DRILLING OPERATIONS AUTHORIZED ARE
SUBJECT TO COMPLIANCE WITH ATTACHED
"GENERAL REQUIREMENTS".

22. APPROX. DATE WORK WILL START*

23. PROPOSED CASING AND CEMENTING PROGRAM

This action is subject to review and
procedural review pursuant to 43 CFR 3165.3
and appeal pursuant to 43 CFR 3165.4.

SIZE OF HOLE	SIZE OF CASING	WEIGHT PER FOOT	SETTING DEPTH	QUANTITY OF CEMENT
26"	20"	106.5#	200'	590 cf. circulated
17 1/2"	13 3/8"	61&68#	3550'	4553 cf-2 st; circ. surf
12 1/4"	9 5/8"	43.5#&47#	6000'	1312 cf-circ. liner
8 1/2"	7"	26#	8875'	533 cf-circ. liner

Drill and test an 8875' wildcat disposal well. The zones of interest will be tested for disposal potential.

BOP's will be inspected and operated daily, and pressure tests will be conducted as required.

RECEIVED

AUG 09 1989

OIL CON. DIV.

IN ABOVE SPACE DESCRIBE PROPOSED PROGRAM: If proposal is to deepen or plug back, give data on present productive zone and proposed new productive zone. If proposal is to drill or deepen directionally, give pertinent data on subsurface locations and measured and true vertical depths. Give blowout preventer program, if any.

24.

SIGNED

[Signature]

TITLE

Regulatory Affairs DATE 10-04-88

(This space for Federal or State office use)

PERMIT NO.

APPROVAL DATE

APPROVED
AS AMENDED

APPROVED BY

TITLE

CONDITIONS OF APPROVAL, IF ANY:

AUG 07 1989

[Signature]
AREA MANAGER

NMOCC
*See Instructions On Reverse Side

All distances must be from the outer boundaries of the Section.

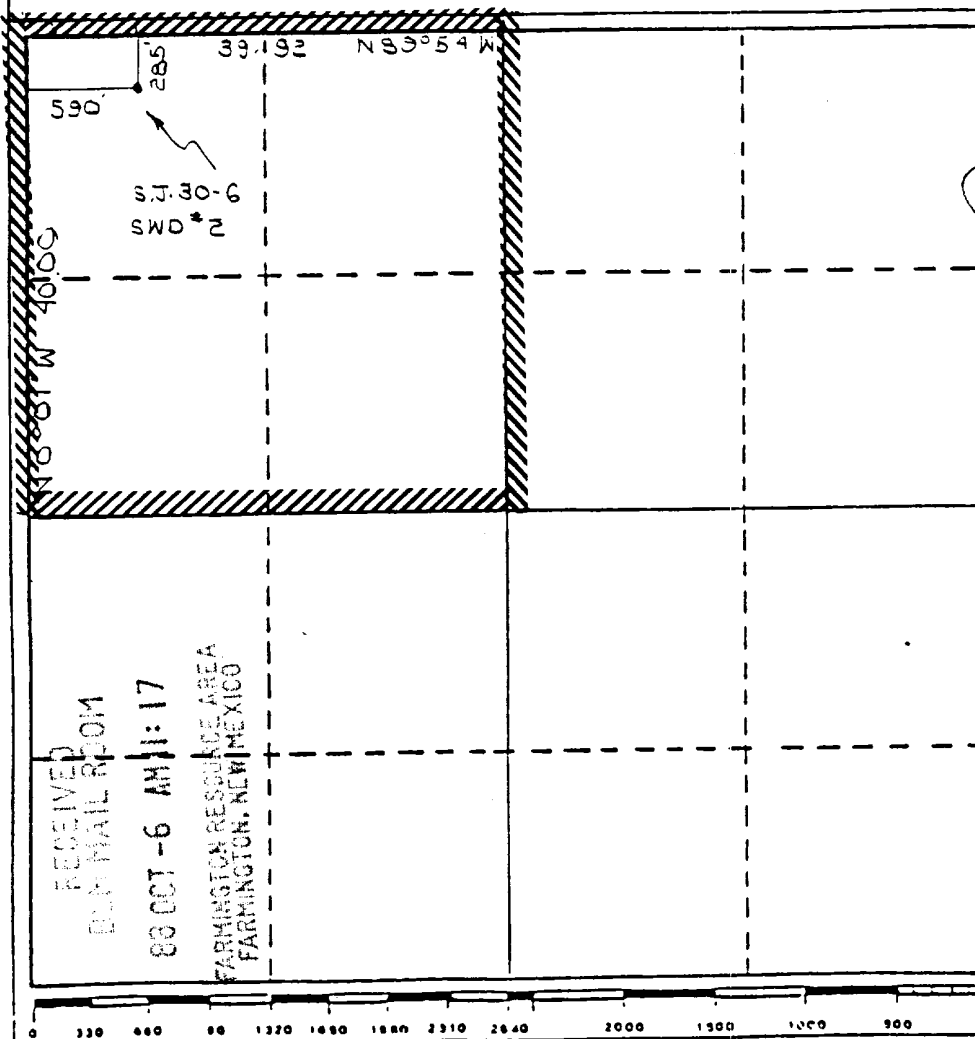
Operator El Paso Natural Gas Company <i>NIO</i>			Lease San Juan 30-1		SWD(SF-079382)	Well No. 2
Unit Letter D	Section 23	Township T30N	Range R7W		County Rio Arriba County	
Actual Footage Location of Well						
285 feet from the North line and		590 feet from the West line				
Ground Level Elev. 6263	Producing Formation SWD <i>NIOARTSOL</i>		Pool <i>ARTSOL</i>		Dedicated Acreage Acres	

- Outline the acreage dedicated to the subject well by colored pencil or hachure marks on the plat below.
- If more than one lease is dedicated to the well, outline each and identify the ownership thereof (both as to working interest and royalty).
- If more than one lease of different ownership is dedicated to the well, have the interests of all owners been consolidated by communitization, unitization, force-pooling, etc?

☐ Yes ☐ No If answer is "yes," type of consolidation _____

If answer is "no," list the owners and tract descriptions which have actually been consolidated. (Use reverse side of this form if necessary.) _____

No allowable will be assigned to the well until all interests have been consolidated (by communitization, unitization, forced-pooling, or otherwise) or until a non-standard unit, eliminating such interests, has been approved by the Division.



CERTIFICATION

I hereby certify that the information contained herein is true and complete to the best of my knowledge and belief.

Name
Drilling Clerk

Position
El Paso Natural Gas Co

Company
10-4-88

Date

I hereby certify that the location shown on this plat was plotted from field notes of actual surveys made by me or under my supervision and that the same is true and correct to the best of my knowledge and belief.

Registered Professional
Land Surveyor

Date Surveyed
June 6, 1988

Registered Land Surveyor
R. Howard Daggett

Certificate No.
R. Howard Daggett

9679

Operations Plan
San Juan 30-6 Unit SWD #2

Location: 285'N, 590'W, Sec. 23, T-30-N, R-7-W, Rio Arriba Co., NM

Formation: Morrison/Entrada Wildcat Disposal Well Elevation: 6263'GL

I. Geology:

A. Formation Tops:	Surface	San Jose	Point Lookout	5395'
	Ojo Alamo	2105'	Mancos	5845'
	Kirtland	2315'	Gallup	6470'
	Fruitland	2860'	Greenhorn	7390'
	Pic.Cliffs	3170'	Graneros	7440'
	Lewis	3300'	Dakota	7590'
	Chacra	4245'	Morrison	7800'
	Mesa Verde	5045'	Todilto	8545'
	Menefee	5085'	Entrada	8632'
			Total Depth	8875'
B. Logging Program:				
GR, Ind, FDC, CNL, Sonic - 6400 - TD; 4950-5800'				

II. Drilling

A. Mud Program:

1. 26" surface hole: 0 - 500' spud mud
2. 17 1/2" intermediate hole: 500' - 3500' fresh water based mud system
3. 12 1/4" drilling liner: 3500' - 6000' air drilling
4. 8 3/4" long string: 6000' - 8875' air drilling through the Dakota to \pm 7770'. Fresh water based mud system to TD.

B. BOP Program:

1. 26" hole: none required
2. 17 1/2" hole: 20" 3000 psi double gate BOP with 20" 3000 psi rotating head (see Figure #BOP 1)
3. 12 1/4" hole: 13 5/8" 3000 psi double gate BOP with 13 5/8" 3000 psi rotating head (see Figure #BOP 2)
4. 8 3/4" hole: 13 5/8" 3000 psi double gate BOP with 13 5/8" 3000 psi rotating head (see Figure #BOP 2)

Operations Plan - San Juan 30-6 Unit SWD #2

III. Casing Program:

<u>A. Hole Size</u>	<u>Csg. Size</u>	<u>Weight</u>	<u>Grade</u>	<u>Interval</u>
26"	20"	106.5#	K-55	0-500'
17 1/2"	13 3/8"	61.0#&68.0#	K-55	0-3500'
12 1/4"	9 5/8"	43.5 & 47#	N-80	3350-6000'
8 3/4"	7"	23.0#	N-80	0-8875'

B. Float Equipment:

20" surface - cement nose float shoe equipped for inner string cementing.

13 3/8" intermediate - cement nose guide shoe, float collar and multiple stage cementer equipped for two stage cementing. Set tool for second stage at $\pm 2350'$. Ten centralizers, one every other joint off bottom for a total of five, one below and four above the stage tool every other joint.

9 5/8" liner - cement nose guide shoe, float collar and five centralizers every other joint off bottom. A 9 5/8" x 13 3/8" liner hanger with packoff will be used to isolate the top of the liner.

7" long string - cement nose guide shoe, float collar and centralizers every other joint as required to centralize casing across injection intervals.

C. Injection string:

7850' of 3 1/2", 9.3#, J-55 8rd tubing (internally coated) with a 7" x 4 1/2" Otis Model "WB" production packer and Otis Model "PR" seal assembly on bottom.

D. Wellhead Equipment:

13 3/8" weld on x 7" x 4 1/2" 3000 psi xmas tree assembly single completion for standard service.

IV. Cementing:

20" surface - cement with 1270 sacks Class "B" neat with 1/4# cello-flake/sack and 3% calcium chloride (1500 cu.ft. of slurry, 100% excess to circulate to surface). WOC 12 hours. Test casing to 600 psi for 30 minutes.

13 3/8" intermediate -

First stage - cement with 500 sacks of 65/35 Class "B" Pozmix with 6% gel, 2% calcium chloride, and 1/2 cu.ft. perlite/sack. Tail in with 200 sacks class "B" with 2% calcium chloride, 1/4#/sack flocele (1201 cu.ft. of slurry, 50% excess to circulate to stage tool). Drop opening bomb, wait 30 minutes, open stage tool and circulate for three hours.

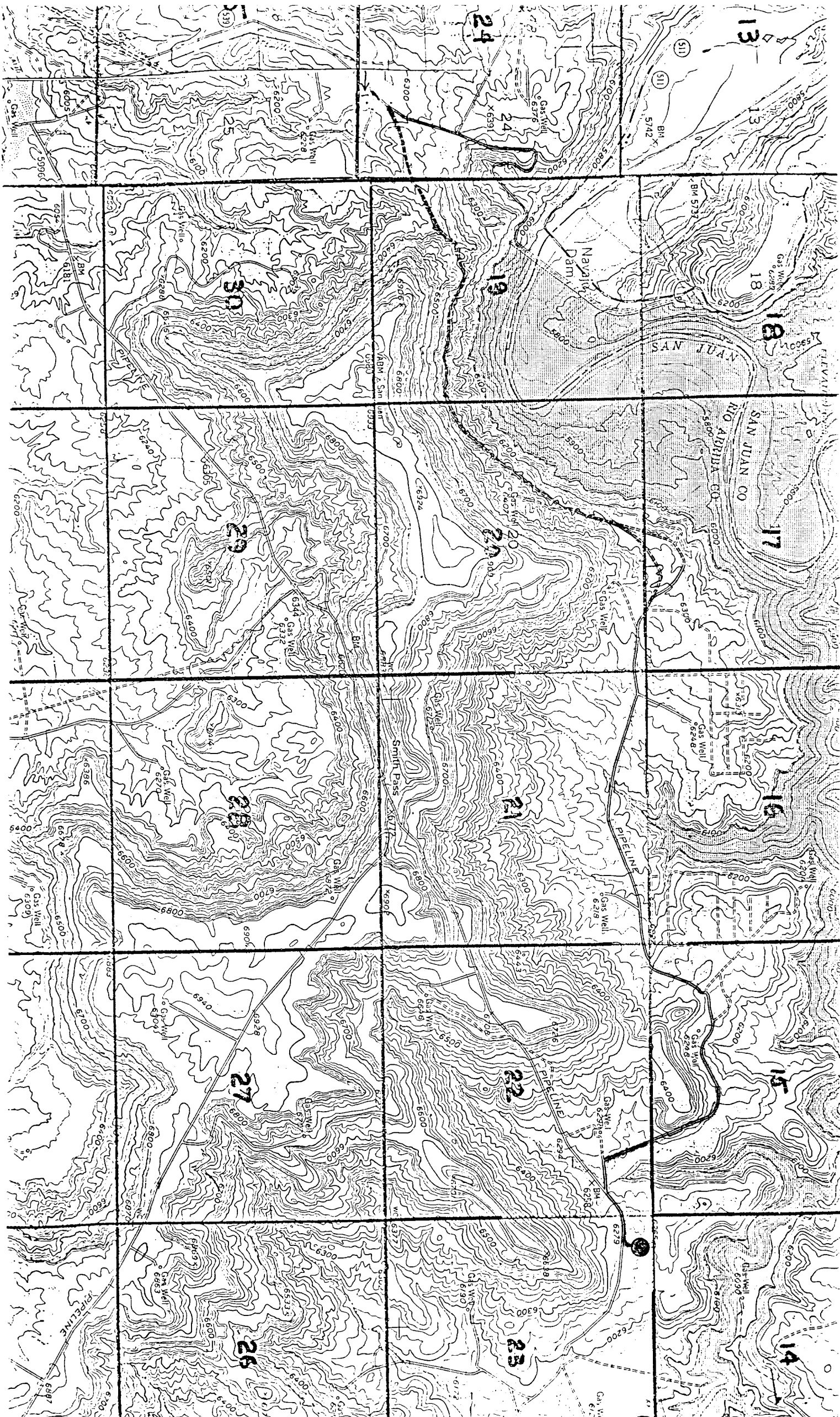
Operations Plan - San Juan 30-6 Unit SWD #2

13 3/8" intermediate - (cont'd)

Second stage - cement with 1210 sacks of 65/35 Class "B" Pozmix with 6% gel, 2% calcium chloride, and 1/2 cu.ft. perlite/sack. Tail in with 100 sacks Class "B" with 2% calcium chloride, 1/4#/sack flocele (2453 cu.ft. of slurry, 50% excess to circulate to surface). Run temperature survey at 8 hours if cement does not circulate to surface. WOC 12 hours. Test casing to 1200 psi for 30 minutes.

9 5/8" liner - lead with 750 sacks of 50/50 Class "B" Pozmix with 2% gel, 10% salt, 1% Halad-9, 1/4#/sack flocele. Tail in with 100 sacks Class "B" with 1/4#/sack flocele, and 0.4% Halad-22A (1086 cu.ft. of slurry, 70% excess to circulate liner). WOC 12 hours. Test casing to 1200 psi for 30 minutes.

7" long string - lead with 200 sacks 50/50 Premium Poz, 2% gel, 10% salt, 1% Halad-22A, 35% silica flour, 1/4#/sack flocele. Tail with 200 sacks Premium cement, 35% silica flour, 1% Halad-22A, 1/4#/sack flocele (533 cu.ft. of slurry, 200% excess to circulate to bottom of 9 5/8" liner). Run temperature survey at 8 hours. WOC 18 hours.





NEW MEXICO ENERGY, MINERALS
& NATURAL RESOURCES DEPARTMENT

OIL CONSERVATION DIVISION
AZTEC DISTRICT OFFICE
1000 RIO BRAZOS ROAD
AZTEC NM 87410
(505) 334-6178 FAX: (505) 334-6170
<http://nemr.state.nm.us/ocd/District/HQ3/district.htm>

MECHANICAL INTEGRITY TEST REPORT
(TA or UIC)

Date of Test 12/2/98 Operator Burlington Oil & Gas Co API # 30-039-24518

Property Name SJ 30-6 Well # 2 Location: Unit D Sec 23 Twn 30 Rge 07

Land Type:

State _____
Federal X
Private _____
Indian _____

Well Type:

Water Injection _____
Salt Water Disposal X
Gas Injection _____
Producing Oil/Gas _____
Pressure observation _____

Temporarily Abandoned Well (Y/N): N

TA Expires: _____

Casing Pres. 1000
Bradenhead Pres. 0
Tubing Pres. 1100
Int. Casing Pres. _____

Tbg. SI Pres. _____
Tbg. Inj. Pres. _____

Max. Inj. Pres. _____

Pressured annulus up to 550 psi. for 15 mins. Test passed failed

REMARKS:

Shut down injection pump casing pressure climbed
to 1100 psi. - Bled casing to 0 + started test.

T₂ - 550 psi

T₅ - 618

T₁₀ - 675

T₁₅ - 735

Test concluded after 15 minutes - test failed.

By [Signature]
(Operator Representative)

Witness [Signature]
(NMOCD)

Production Spec
(Position)

REVISED 11-17-98