

UNITED STATES
DEPARTMENT OF THE INTERIOR
BUREAU OF LAND MANAGEMENT

APPLICATION FOR PERMIT TO DRILL, DEEPEN, OR PLUG BACK

1a. TYPE OF WORK

DRILL ☒

DEEPEN ☐

PLUG BACK ☐

b. TYPE OF WELL

OIL WELL ☐

GAS WELL ☒

OTHER

SINGLE ZONE ☐

MULTIPLE ZONE ☐

2. NAME OF OPERATOR

Northwest Pipeline Corporation

3. ADDRESS OF OPERATOR

3539 East 30th Street - Farmington, NM 87401

4. LOCATION OF WELL (Report location clearly and in accordance with any State requirements.)*

At surface

SE/4 NE/4 1815' FNL & 1085' FEL

At proposed prod. zone

Same

14. DISTANCE IN MILES AND DIRECTION FROM NEAREST TOWN OR POST OFFICE*

14.35 miles northeast of Gobernador, NM

15. DISTANCE FROM PROPOSED*

LOCATION TO NEAREST
PROPERTY OR LEASE LINE, FT.
(Also to nearest drlg. unit line, if any)

1085'

16. NO. OF ACRES IN LEASE

1158.12

17. NO. OF ACRES ASSIGNED
TO THIS WELL

319.34

18. DISTANCE FROM PROPOSED LOCATION*

TO NEAREST WELL, DRILLING, COMPLETED,
OR APPLIED FOR, ON THIS LEASE, FT.

500'

19. PROPOSED DEPTH

3177'

20. ROTARY OR CABLE TOOLS

Rotary

21. ELEVATIONS (Show whether DF, RT, GR, etc.)

6409' GR

DRILLING OPERATIONS AUTHORIZED ARE

23. SUBJECT TO COMPLIANCE WITH ATTACHED
"GENERAL REQUIREMENTS"

22. APPROX. DATE WORK WILL START*

8-20-89

This action is subject to technical and
procedural review pursuant to 43 CFR 3165.3
and appeal pursuant to 43 CFR 3165.4.

| SIZE OF HOLE | SIZE OF CASING | WEIGHT PER FOOT | SETTING DEPTH |
|--------------|----------------|-----------------|---------------|
| 13-1/2" | 9-5/8" | 36# K-55 | 200' |
| 8-3/4" | 7" | 20# K-55 | 3011' |
| 6-1/4" | 5-1/2" | 23# P110 | 2911'-3177' |

195 cu. ft.

142 cu. ft. Surf

1) Plan to drill Fruitland Formation from 3031' to 3177' and complete open hole with a perforated liner in coal zones.

2) The East half of Section 6 is dedicated to this well.

RECEIVED

AUG 14 1989

OIL CON. DIV

DIST. 3

IN ABOVE SPACE DESCRIBE PROPOSED PROGRAM: If proposal is to deepen or plug back, give data on present productive zone and proposed new productive zone. If proposal is to drill or deepen directionally, give pertinent data on subsurface locations and measured and true vertical depths. Give blowout preventer program, if any.

24.

SIGNED

J. R. Vaughan

TITLE Prod. & Drlg. Engineer

DATE

8/1/89

(This space for Federal or State office use)

PERMIT NO.

APPROVAL DATE

APPROVED BY

TITLE

CONDITIONS OF APPROVAL, IF ANY:

APPROVED
AS AMENDED

AUG 10 1989

AREA MANAGER

*See Instructions On Reverse Side

Submit to Appropriate
District Office
State Lease - 4 copies
Fee Lease - 3 copies

State of New Mexico
Energy, Minerals and Natural Resources Department

NORTHWEST PIPELINE
CORPORATION

OIL CONSERVATION DIVISION

P.O. Box 2088
Santa Fe, New Mexico 87504-2088

JUN 29 1989

DISTRICT I
P.O. Box 1980, Hobbs, NM 88240

DISTRICT II
P.O. Drawer DD, Artesia, NM 88210

DISTRICT III
1000 Rio Brazos Rd., Aztec, NM 87410

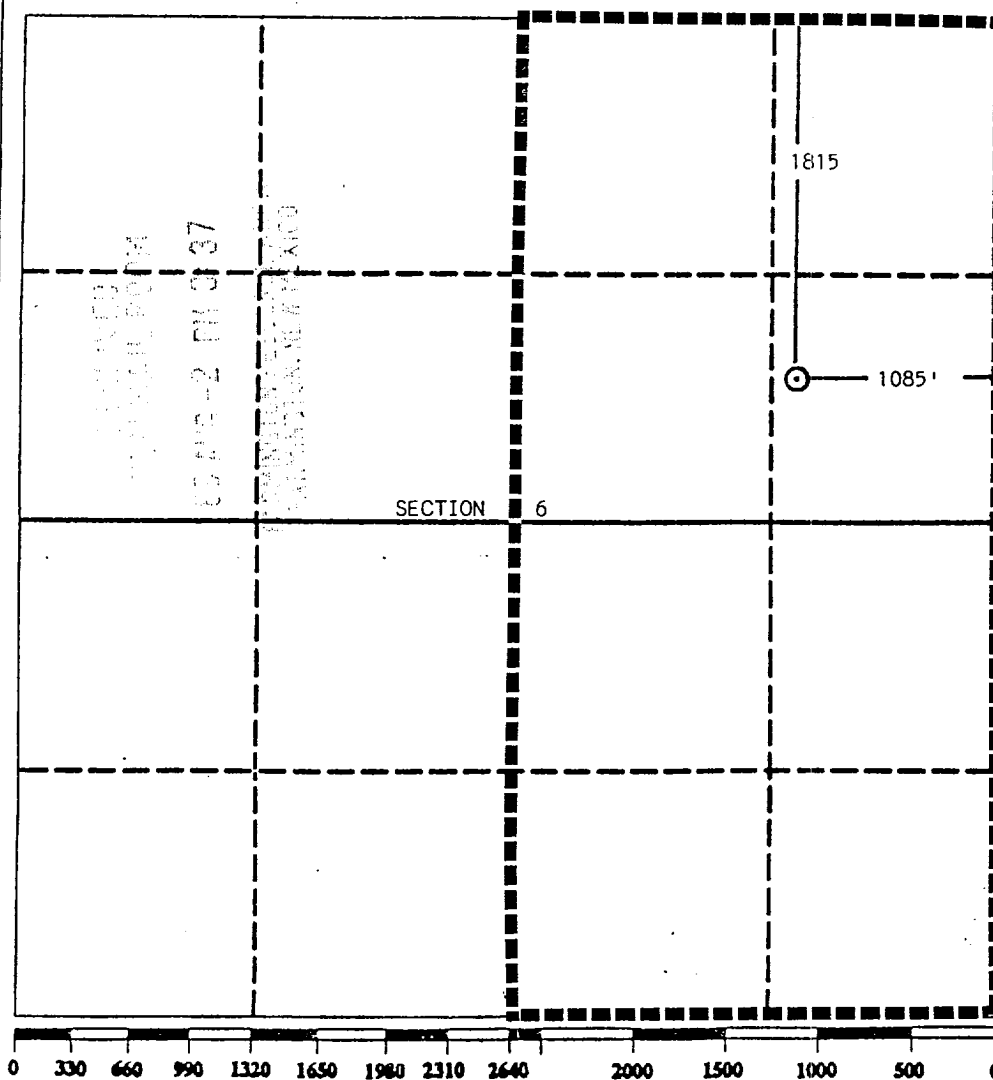
WELL LOCATION AND ACREAGE DEDICATION PLAT

All Distances must be from the outer boundaries of the section

PRODUCTION AND DRILLING

| | | | | | |
|--|----------------------------------|----------------------|------------------------------|----------------------|------------------------------------|
| Operator Northwest Pipeline Corporation | | | Lease San Juan 30-5 | | Well No. 202 |
| Unit Letter G | Section 6 | Township 30 North | Range 5 West | County Rio Arriba | |
| Actual Footage Location of Well: 1815 feet from the North line and 1085 feet from the East line | | | | | |
| Ground level Elev. 6409 | Producing Formation Fruitland | | Pool Basin Fruitland Pool | | Dedicated Acreage: 319.34 Acres |

1. Outline the acreage dedicated to the subject well by colored pencil or hatchure marks on the plat below.
2. If more than one lease is dedicated to the well, outline each and identify the ownership thereof (both as to working interest and royalty).
3. If more than one lease of different ownership is dedicated to the well, have the interest of all owners been consolidated by communitization, unitization, force-pooling, etc.?
☒ Yes ☐ No If answer is "yes" type of consolidation Unitization
If answer is "no" list the owners and tract descriptions which have actually been consolidated. (Use reverse side of this form if necessary.)
No allowable will be assigned to the well until all interests have been consolidated (by communitization, unitization, forced-pooling, or otherwise) or until a non-standard unit, eliminating such interest, has been approved by the Division.



OPERATOR CERTIFICATION

I hereby certify that the information contained herein is true and complete to the best of my knowledge and belief.

Signature
J. R. Vaughan
Printed Name
Jeff Vaughan
Position
Engineer
Company
Northwest Pipeline
Date
July 10, 1989

SURVEYOR CERTIFICATION

I hereby certify that the well location shown on this plat was plotted from field notes of actual surveys made by me or under my supervision, and that the same is true and correct to the best of my knowledge and belief.

Date Surveyed
5/18/89
Signature & Seal of Professional Surveyor
Edgar E. Risenhoover
Certificate No. 8979
Edgar E. Risenhoover
REGISTERED LAND SURVEYOR
NEW MEXICO

NEW MEXICO

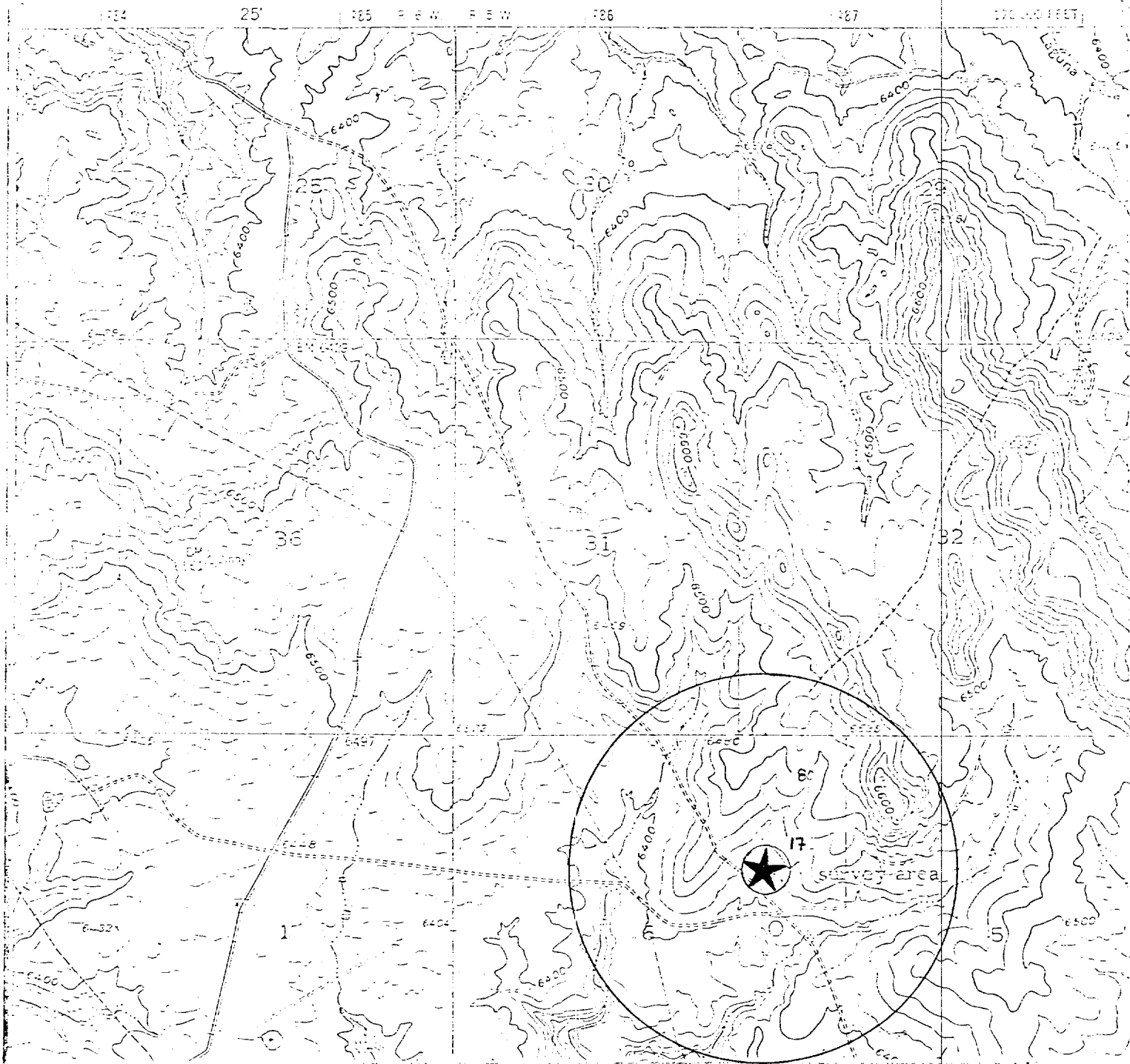
GOMEZ RANCH, N. MEX.

N3345-W10722.5/7.5

1954

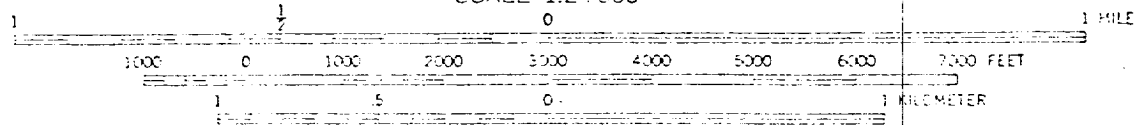
PHOTOREVISED N32

SURVEY LOCATION

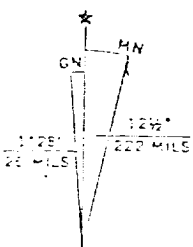


T30N, R5W

SCALE 1:24,000



CONTOUR INTERVAL 20 FEET



Location map for Well No. S.J. 30-5 #202 Offsets are in SJ 30-5 UNIT