

UNITED STATES  
DEPARTMENT OF THE INTERIOR  
BUREAU OF LAND MANAGEMENT

APPLICATION FOR PERMIT TO DRILL, DEEPEN, OR PLUG BACK

1a. TYPE OF WORK  
DRILL ☒ DEEPEN ☐ PLUG BACK ☐

b. TYPE OF WELL  
OIL WELL ☐ GAS WELL ☒ OTHER ☐

2. NAME OF OPERATOR  
Northwest Pipeline Corporation

3. ADDRESS OF OPERATOR  
3539 East 30th Street - Farmington, NM 37401

4. LOCATION OF WELL (Report location clearly and in accordance with any State requirements.)\*  
At surface 1495' FSL & 1695 FWL NE/4 SW/4  
At proposed prod. zone Same

14. DISTANCE IN MILES AND DIRECTION FROM NEAREST TOWN OR POST OFFICE\*  
13 miles northeast of Gobernador, NM

15. DISTANCE FROM PROPOSED\* LOCATION TO NEAREST PROPERTY OR LEASE LINE, FT. (Also to nearest drlg. unit line, if any) 1495'

16. NO. OF ACRES IN LEASE 386.61

17. NO. OF ACRES ASSIGNED TO THIS WELL 319.69

18. DISTANCE FROM PROPOSED LOCATION\* TO NEAREST WELL, DRILLING, COMPLETED, OR APPLIED FOR, ON THIS LEASE, FT. 500'

19. PROPOSED DEPTH 3254'

20. ROTARY OR CABLE TOOLS Rotary

21. ELEVATIONS (Show whether DF, RT, GR, etc.) 6438' GR

22. APPROX. DATE WORK WILL START\* 9-1-89

23. PROPOSED CASING AND CEMENTING PROGRAM

5. LEASE DESIGNATION AND SERIAL NO.  
SF-079401 NM-012299

6. IF INDIAN, ALLOTTEE OR TRIBE NAME

7. UNIT AGREEMENT NAME  
San Juan 31-6 Unit

8. FARM OR LEASE NAME  
San Juan 31-6 Unit

9. WELL NO.  
#202

10. FIELD AND POOL, OR WILDCAT ~~Pool~~ Basin Fruitland ~~Pool~~

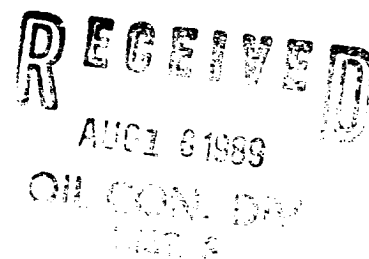
11. SEC., T., R. M., OR BLK. AND SURVEY OR AREA  
Sec. 1, T30N, R6W

12. COUNTY OR PARISH Rio Arriba

13. STATE New Mexico

SIZE OF HOLE	SIZE OF CASING	WEIGHT PER FOOT	SETTING DEPTH	QUANTITY OF CEMENT
13-1/2"	9-5/8"	36# K-55	200'	195 cu.ft.
8-3/4"	7"	20# K-55	3036'	147 cu.ft.
6-1/4"	5-1/2"	23# P110	2936'-3254'	none

- 1) Plan to drill Fruitland Formation from 3056' to 3254' and complete open hole with a perforated liner in coal zones.
- 2) The East half of Section 1 is dedicated to this well.



IN ABOVE SPACE DESCRIBE PROPOSED PROGRAM: If proposal is to deepen or plug back, give data on present productive zone and proposed new productive zone. If proposal is to drill or deepen directionally, give pertinent data on subsurface locations and measured and true vertical depths. Give blowout preventer program, if any.

24. SIGNED J.R. Vaughan TITLE Prod. & Drlg. Engineer DATE 8/1/89  
(This space for Federal or State office use)

PERMIT NO. \_\_\_\_\_ APPROVAL DATE \_\_\_\_\_  
APPROVED BY \_\_\_\_\_ TITLE \_\_\_\_\_  
CONDITIONS OF APPROVAL, IF ANY:

APPROVED  
AS AMENDED  
AUG 11 1989  
Ken Townsend  
AREA MANAGER

\*See Instructions On Reverse Side

Submit to Appropriate  
District Office  
State Lease - 4 copies  
Fee Lease - 3 copies

State of New Mexico  
Energy, Minerals and Natural Resources Department

Form C-102  
Revised 1-1-89

OIL CONSERVATION DIVISION

P.O. Box 2088  
Santa Fe, New Mexico 87504-2088

DISTRICT I  
P.O. Box 1980, Hobbs, NM 88240

DISTRICT II  
P.O. Drawer DD, Artesia, NM 88210

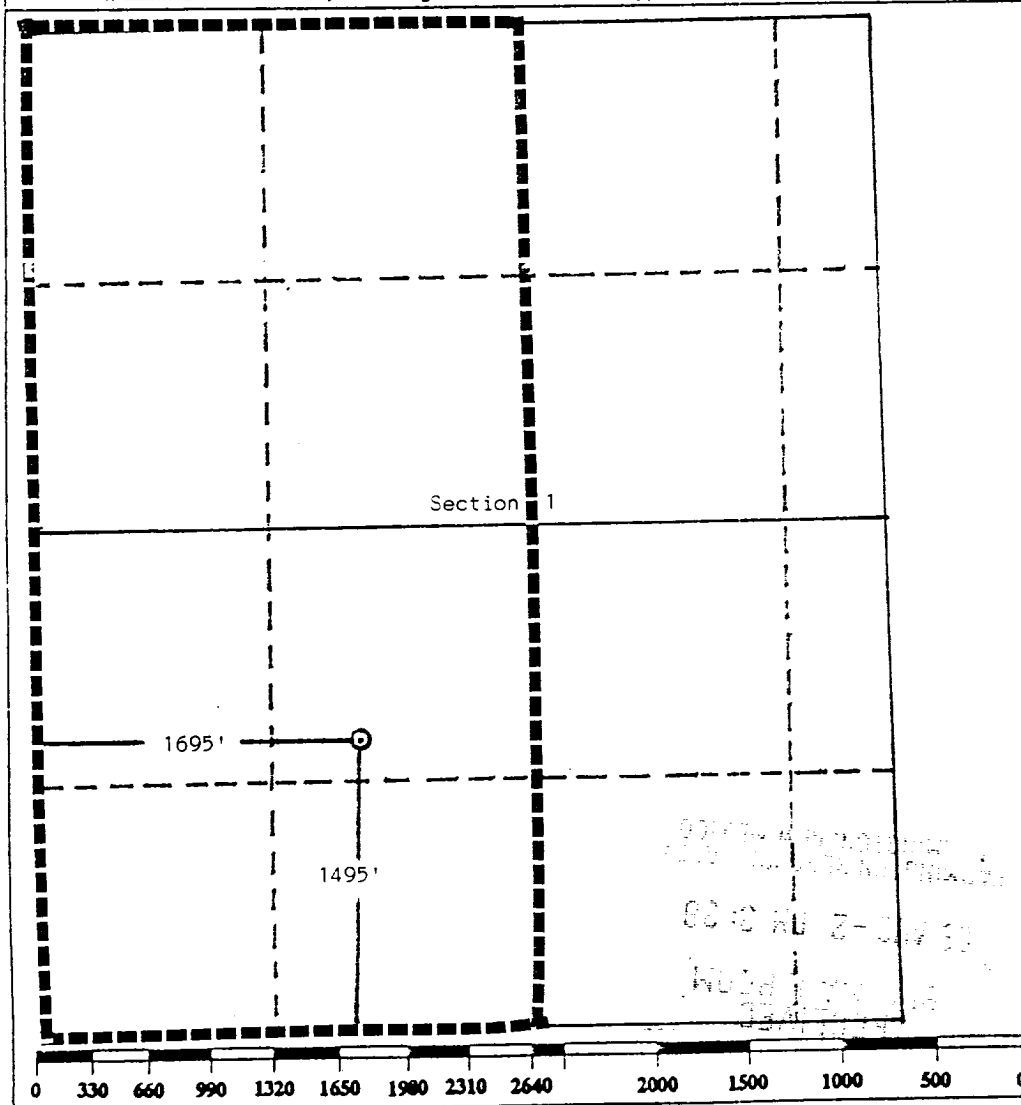
DISTRICT III  
1000 Rio Brazos Rd., Aztec, NM 87410

WELL LOCATION AND ACREAGE DEDICATION PLAT

All Distances must be from the outer boundaries of the section

Operator Northwest Pipeline Corporation			Lease San Juan 31-6		Well No. 202
Unit Letter N/K	Section 1	Township 30 North	Range 6 West	County Rio Arriba	
Actual Footage Location of Well: 1495 feet from the South line and 1695 feet from the West line					
Ground level Elev. 6438	Producing Formation Fruitland	Pool Basin Fruitland Pool		Dedicated Acreage: 319.69 Acres	

- Outline the acreage dedicated to the subject well by colored pencil or hatchure marks on the plat below.
- If more than one lease is dedicated to the well, outline each and identify the ownership thereof (both as to working interest and royalty).
- If more than one lease of different ownership is dedicated to the well, have the interest of all owners been consolidated by communitization, unitization, force-pooling, etc?  
☒ Yes ☐ No If answer is "yes" type of consolidation unitization  
If answer is "no" list the owners and tract descriptions which have actually been consolidated. (Use reverse side of this form if necessary).  
No allowable will be assigned to the well until all interests have been consolidated (by communitization, unitization, forced-pooling, or otherwise) or until a non-standard unit, eliminating such interest, has been approved by the Division.



OPERATOR CERTIFICATION

I hereby certify that the information contained herein is true and complete to the best of my knowledge and belief.

Signature

Jeff Vaughan

Printed Name

Engineer

Position

Northwest Pipeline Corp

Company

7-10-89

Date

SURVEYOR CERTIFICATION

I hereby certify that the well location shown on this plat was plotted from field notes of actual surveys made by me or under my supervision, and that the same is true and correct to the best of my knowledge and belief.

Date Surveyed

July 7, 1989

Signature & Seal of  
Professional Surveyor

Edgar L. Risenhoover  
REGISTERED  
16420  
Edgar L. Risenhoover  
CERTIFICATE NO. 16420  
EDGAR L. RISENHOOVER, S.

NEW MEXICO

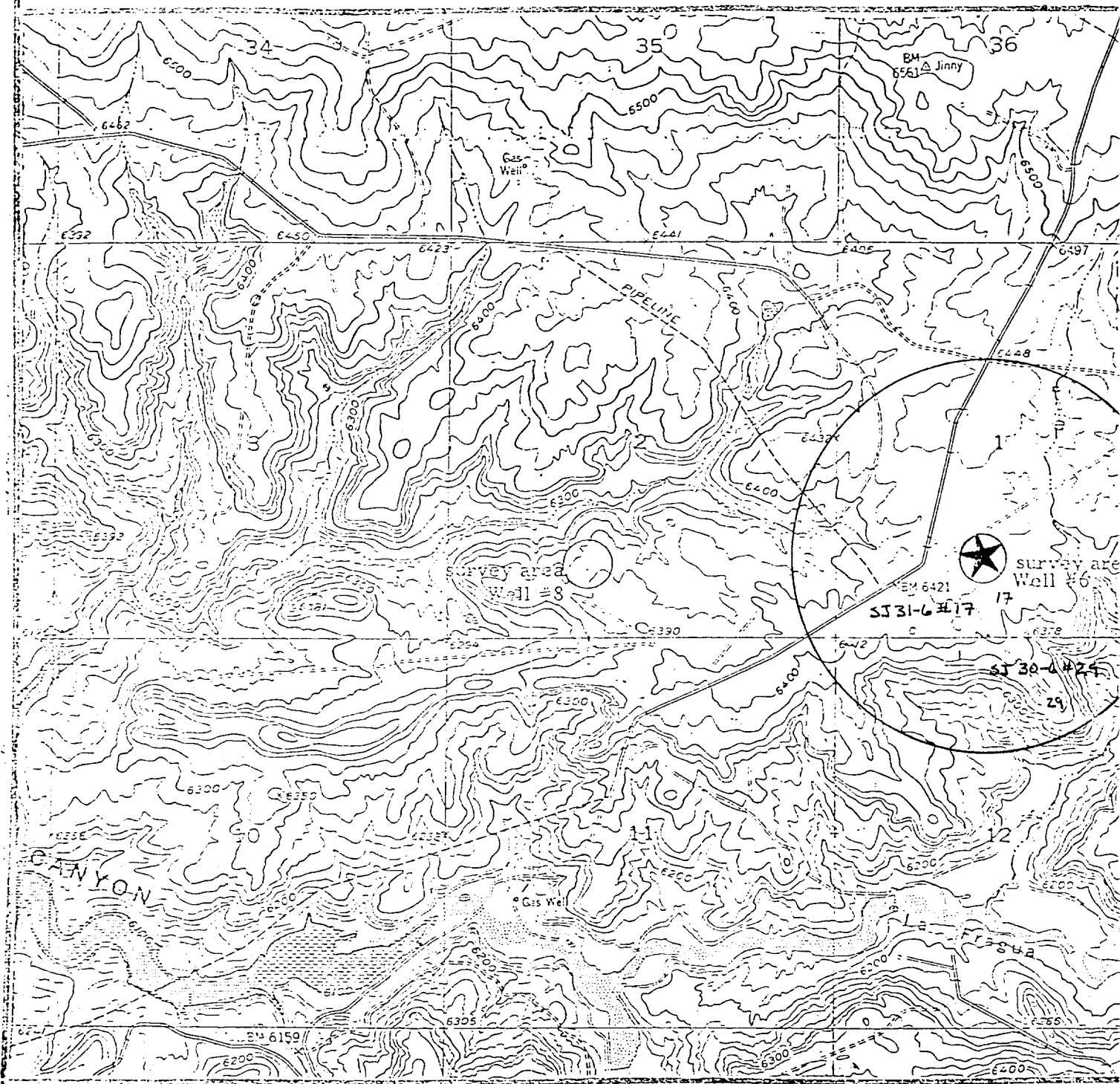
QUADRANGLE LOCATION

GOMEZ RANCH, N. MEX.

N3645-W10722.5/7.5

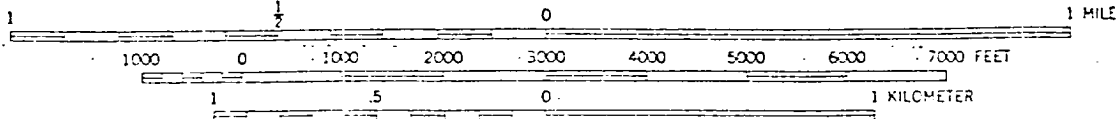
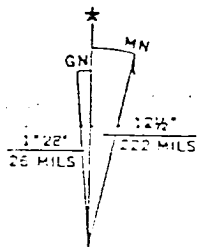
1954

PHOTOREVISED 1982



T30N, R6W

SCALE 1:24000



CONTOUR INTERVAL 20 FEET

Location maps for Well No. S.J. 31-6 #202