

UNITED STATES  
DEPARTMENT OF THE INTERIOR  
BUREAU OF LAND MANAGEMENT

APPLICATION FOR PERMIT TO DRILL, DEEPEN, OR PLUG BACK

1a. TYPE OF WORK

DRILL ☒

DEEPEN ☐

PLUG BACK ☐

b. TYPE OF WELL

OIL  
WELL ☐

GAS  
WELL ☒

OTHER

SINGLE  
ZONE ☐

MULTIPLE  
ZONE ☐

2. NAME OF OPERATOR

Northwest Pipeline Corporation

3. ADDRESS OF OPERATOR

3539 East 30th Street - Farmington, NM 87401

4. LOCATION OF WELL (Report location clearly and in accordance with any State requirements.)\*

At surface

1865' FSL & 1595' FWL NW/4 SW/4

At proposed prod. zone

Same

14. DISTANCE IN MILES AND DIRECTION FROM NEAREST TOWN OR POST OFFICE\*

20 miles northeast of Gobernador, NM

15. DISTANCE FROM PROPOSED\*  
LOCATION TO NEAREST  
PROPERTY OR LEASE LINE, FT.  
(Also to nearest drlg. unit line, if any)

16. NO. OF ACRES IN LEASE

639.16

17. NO. OF ACRES ASSIGNED  
TO THIS WELL

319.49

18. DISTANCE FROM PROPOSED LOCATION\*  
TO NEAREST WELL, DRILLING, COMPLETED,  
OR APPLIED FOR, ON THIS LEASE, FT.

19. PROPOSED DEPTH

3140'

20. ROTARY OR CABLE TOOLS

Rotary

21. ELEVATIONS (Show whether DF, RT, GR, etc.)

6302' GR

DRILLING OPERATIONS AUTHORIZED ARE  
SUBJECT TO COMPLIANCE WITH ATTACHED  
"GENERAL REQUIREMENTS"

22. APPROX. DATE WORK WILL START\*

8-21-89

23. PROPOSED CASING AND CEMENTING PROGRAM

This proposal is subject to the procedural review pursuant to 43 CFR 3165.3 and appeal pursuant to 43 CFR 3165.4.

SIZE OF HOLE	SIZE OF CASING	WEIGHT PER FOOT	SETTING DEPTH	
13-1/2"	9-5/8"	36# K-55	200'	195 cu.ft.
8-3/4"	7"	20# K-55	2702'	125 cu.ft.
6-1/4"	5-1/2"	23# P110	2602'-3140'	None

1) Plan to drill Fruitland Formation from 2722' to 3140' and complete open hole with a perforated liner in coal zones.

2) The west half of Section 5 is dedicated to this well.

RECEIVED

AUG 16 1989

OIL CON. DIV.

IN ABOVE SPACE DESCRIBE PROPOSED PROGRAM: If proposal is to deepen or plug back, give data on present productive zone and proposed new productive zone. If proposal is to drill or deepen directionally, give pertinent data on subsurface locations and measured vertical depths. Give blowout preventer program, if any.

24.

SIGNED

J.R. Vaughan

TITLE Prod. & Drlg. Engineer

DATE 8/1/89

(This space for Federal or State office use)

PERMIT NO.

APPROVAL DATE

APPROVED  
AS AMENDED

APPROVED BY

TITLE

CONDITIONS OF APPROVAL, IF ANY:

OK

AUG 14 1989  
AREA MANAGER

\*See Instructions On Reverse Side

Submit to Appropriate  
District Office  
State Lease - 4 copies  
Fee Lease - 3 copies

State of New Mexico  
Energy, Minerals and Natural Resources Department

Northwest Pipeline  
CORPORATION  
Form 8-102  
Revised 1-1-80

OIL CONSERVATION DIVISION  
P.O. Box 2088  
Santa Fe, New Mexico 87504-2088

JUN 29 1989

DISTRICT I  
P.O. Box 1980, Hobbs, NM 88240

DISTRICT II  
P.O. Drawer DD, Artesia, NM 88210

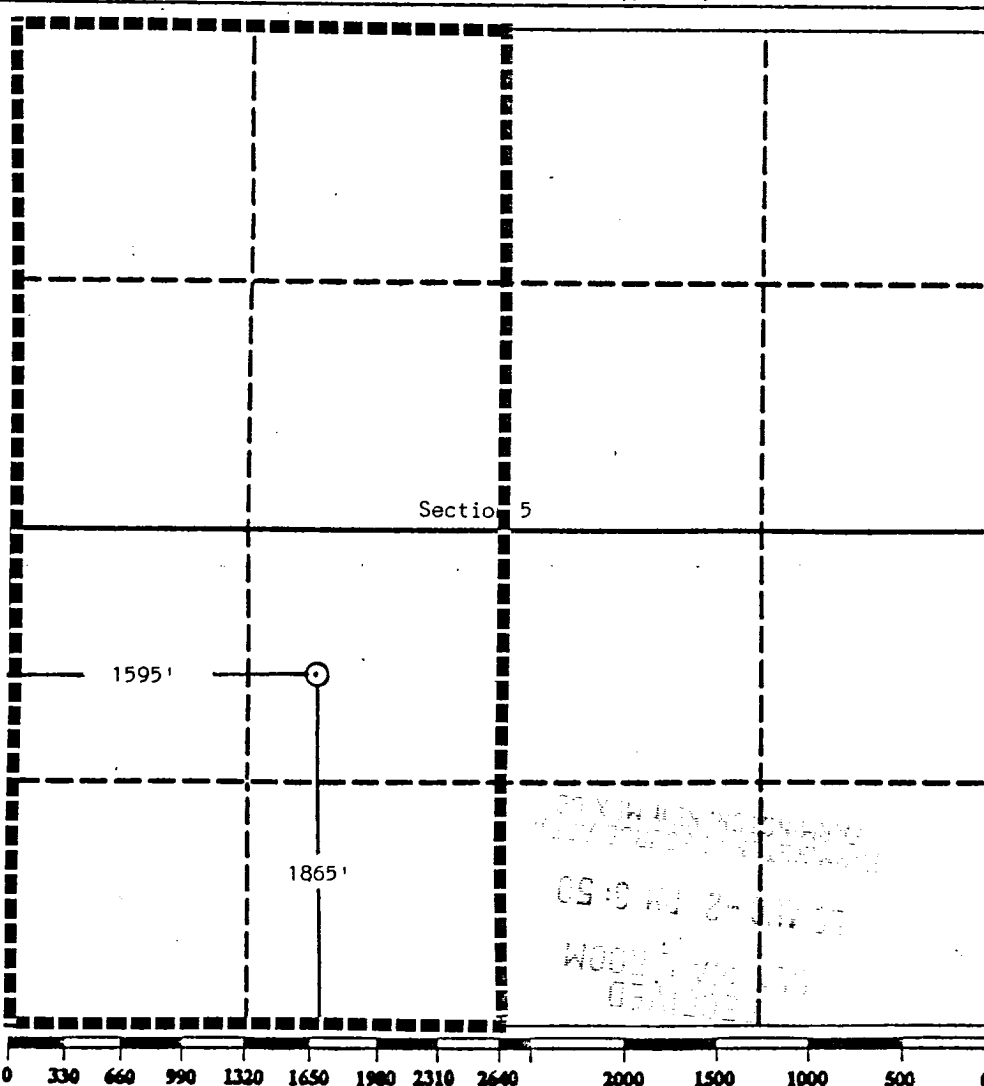
DISTRICT III  
1000 Rio Brazos Rd., Aztec, NM 87410

PRODUCTION AND DRILLING

WELL LOCATION AND ACREAGE DEDICATION PLAT  
All Distances must be from the outer boundaries of the section

Operator Northwest Pipeline Corporation			Lease San Juan 31-6		Well No. 213
Unit Letter K	Section 5	Township 30 North	Range 6 West	County Rio Arriba	
Actual Footage Location of Well: 1865 feet from the South line and 1595 feet from the West line					
Ground level Elev. 6302	Producing Formation Fruitland		Pool Basin Fruitland Pool	Dedicated Acreage: 319.49 Acres	

- Outline the acreage dedicated to the subject well by colored pencil or hatchure marks on the plat below.
- If more than one lease is dedicated to the well, outline each and identify the ownership thereof (both as to working interest and royalty).
- If more than one lease of different ownership is dedicated to the well, have the interest of all owners been consolidated by communitization, unitization, force-pooling, etc?  
☒ Yes ☐ No If answer is "yes" type of consolidation Unitization  
If answer is "no" list the owners and tract descriptions which have actually been consolidated. (Use reverse side of this form if necessary.)  
No allowable will be assigned to the well until all interests have been consolidated (by communitization, unitization, force-pooling, or otherwise) or until a non-standard unit, eliminating such interest, has been approved by the Division.



OPERATOR CERTIFICATION

I hereby certify that the information contained herein is true and complete to the best of my knowledge and belief.

Signature Jeff Vaughan  
Printed Name Jeff Vaughan  
Position Engineer  
Company Northwest Pipeline Corp.  
Date July 10, 1989

SURVEYOR CERTIFICATION

I hereby certify that the well location shown on this plat was plotted from field notes of actual surveys made by me or under my supervision, and that the same is true and correct to the best of my knowledge and belief.

Date Surveyed May 1989  
Signature & Seal of Professional Surveyor Edgar L. Rise  
Certificate No. 5979  
Edgar L. Rise, L.S.