



STATE OF NEW MEXICO  
ENERGY, MINERALS AND NATURAL RESOURCES DEPARTMENT  
OIL CONSERVATION DIVISION

GARREY CARRUTHERS  
GOVERNOR

POST OFFICE BOX 2088  
STATE LAND OFFICE BUILDING  
SANTA FE, NEW MEXICO 87504  
(505) 827-5800

March 28, 1989

Meridian Oil, Inc.  
P.O. Box 4289  
Farmington, NM 87499-4289

Attention: Peggy Bradfield

Administrative Order NSP-1567

Dear Ms. Bradfield:

Reference is made to your application of February 23, 1989, for a 226.61-acre non-standard gas proration unit consisting of the following acreage in the Basin-Fruitland Coal (Gas) Pool:

RIO ARRIBA COUNTY, NEW MEXICO  
TOWNSHIP 30 NORTH, RANGE 6 WEST, NMPM  
Section 1: Lots 5, 6, 9, 10, and 11, the SW/4 NE/4, and the W/2 SE/4

It is my understanding that this unit is to be dedicated to your San Juan 31-6 Unit Well No. 201 to be drilled at a standard coal gas well location 1490 feet from the North line and 790 feet from the East line (Unit G) of said Section 1.

By authority granted me under the provisions of Rule 6 of the Special Rules and Regulations for the Basin-Fruitland Coal (Gas) Pool, as promulgated by Division Order No. R-8768, the above non-standard gas proration unit is hereby approved.

Sincerely,

for William J. LeMay  
Director

WJL/MES/ag

cc: Oil Conservation Division - Aztec  
NM Oil and Gas Engineering Committee - Hobbs  
U.S. Bureau of Land Management - Farmington

RECEIVED  
OIL CON. DIV  
DIST. 3



STATE OF NEW MEXICO  
ENERGY AND MINERALS DEPARTMENT  
OIL CONSERVATION DIVISION  
AZTEC DISTRICT OFFICE

1000 RIO BRAZOS ROAD  
AZTEC, NEW MEXICO 87410  
(505) 334-6178

OIL CONSERVATION DIVISION  
BOX 2088  
SANTA FE, NEW MEXICO 87501

DATE 2-28-89

RE: Proposed MC \_\_\_\_\_  
Proposed DHC \_\_\_\_\_  
Proposed NSL \_\_\_\_\_  
Proposed SWD \_\_\_\_\_  
Proposed WFX \_\_\_\_\_  
Proposed PMX \_\_\_\_\_

NSP. X

Gentlemen:

I have examined the application dated 2-28-89  
for the Martinez Oil Trac. S.T. 31-61124 #201 G-1-30N-6W  
Operator Lease and Well No. Unit, S-T-R

and my recommendations are as follows:

Approve  
\_\_\_\_\_  
\_\_\_\_\_  
\_\_\_\_\_  
\_\_\_\_\_

Yours truly,

Paul R. Smith

*Attn: E. Busch*

**MERIDIAN OIL**

February 22, 1989

Mr. William LeMay  
New Mexico Oil Conservation Division  
Post Office Box 2088  
Santa Fe, New Mexico 87504

FEB 22 1989

Dear Mr. LeMay:

This is a request for administrative approval for a non-standard proration unit for a gas well location in the Basin Fruitland Coal Pool.

Meridian Oil Inc. San Juan 31-6 Unit #201 is located at 1490' from the North line and 790' from the East line of Section 1, T-30-N, R-6-W, Rio Arriba County, New Mexico.

A copy of this application is being submitted to all offset operators by certified mail with a request that they furnish your Santa Fe office with a Waiver of Objection, and return one copy to this office.

A plat showing the proposed well location and configuration of Section 1, along with an ownership plat, are attached.

Sincerely yours,

*Peggy Bradfield*

Peggy Bradfield

encl.

WAIVER

\_\_\_\_\_ hereby waives objection to Meridian Oil Inc.'s application for a non-standard proration unit for their San Juan 31-6 Unit #201 as proposed above.

By: \_\_\_\_\_

Date: \_\_\_\_\_

xc: Northwest Pipeline

**RECEIVED**  
FEB 28 1989  
OIL CON. DIV.  
DIST. 3

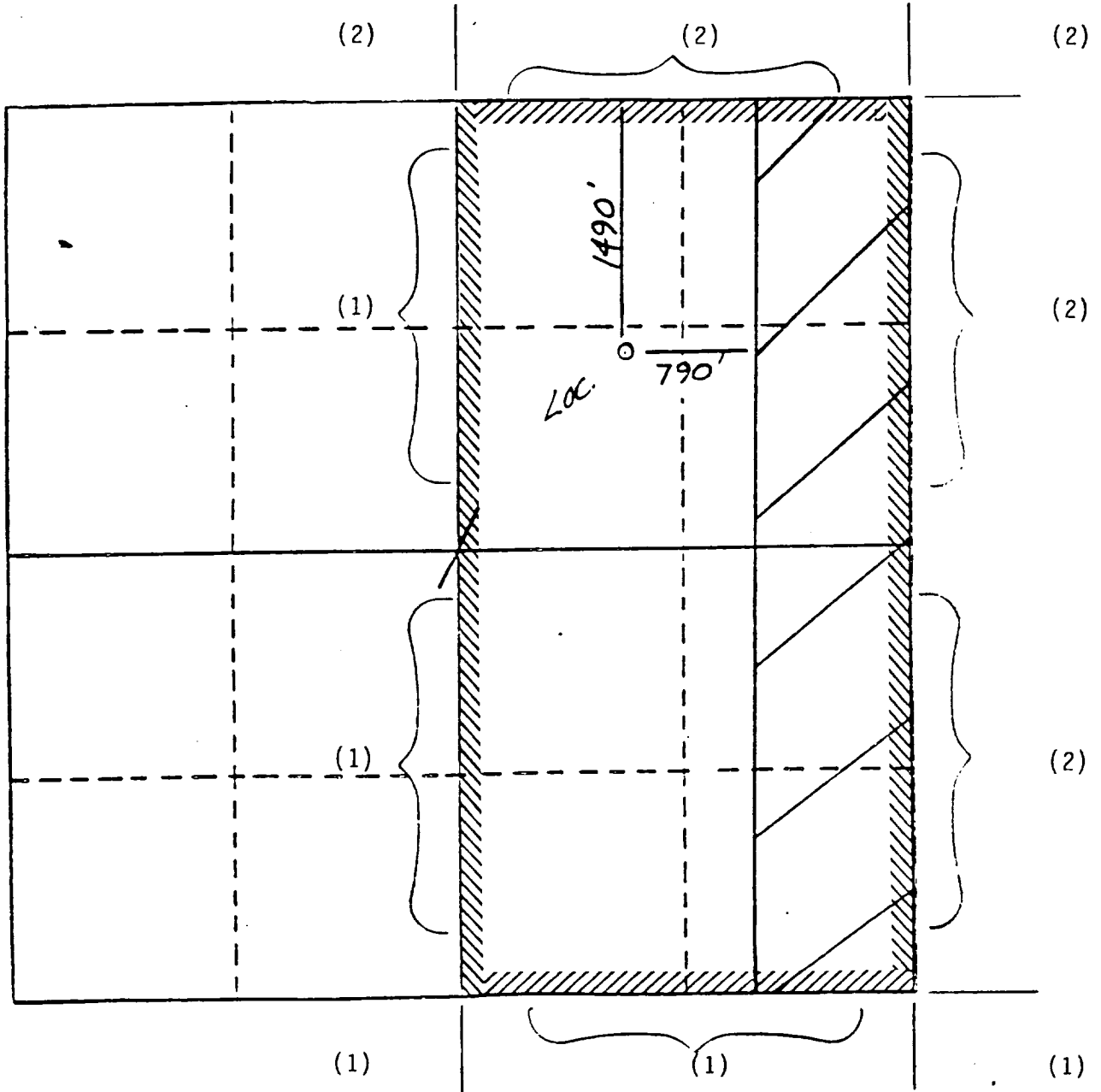
MERIDIAN OIL INC.

Well Name San Juan 31-6 Unit #201, Fruitland Coal

Footage----- 1490' FNL; 790' FEL

APPLICATION FOR NON-STANDARD PRORATION UNIT

County Rio Arriba State New Mexico Section 1 Township 30N Range 6W



REMARKS: OFFSET OPERATORS:

(1) Meridian Oil Inc.

(2) Northwest Pipeline Corporation

All distances must be from the outer boundaries of the Section.

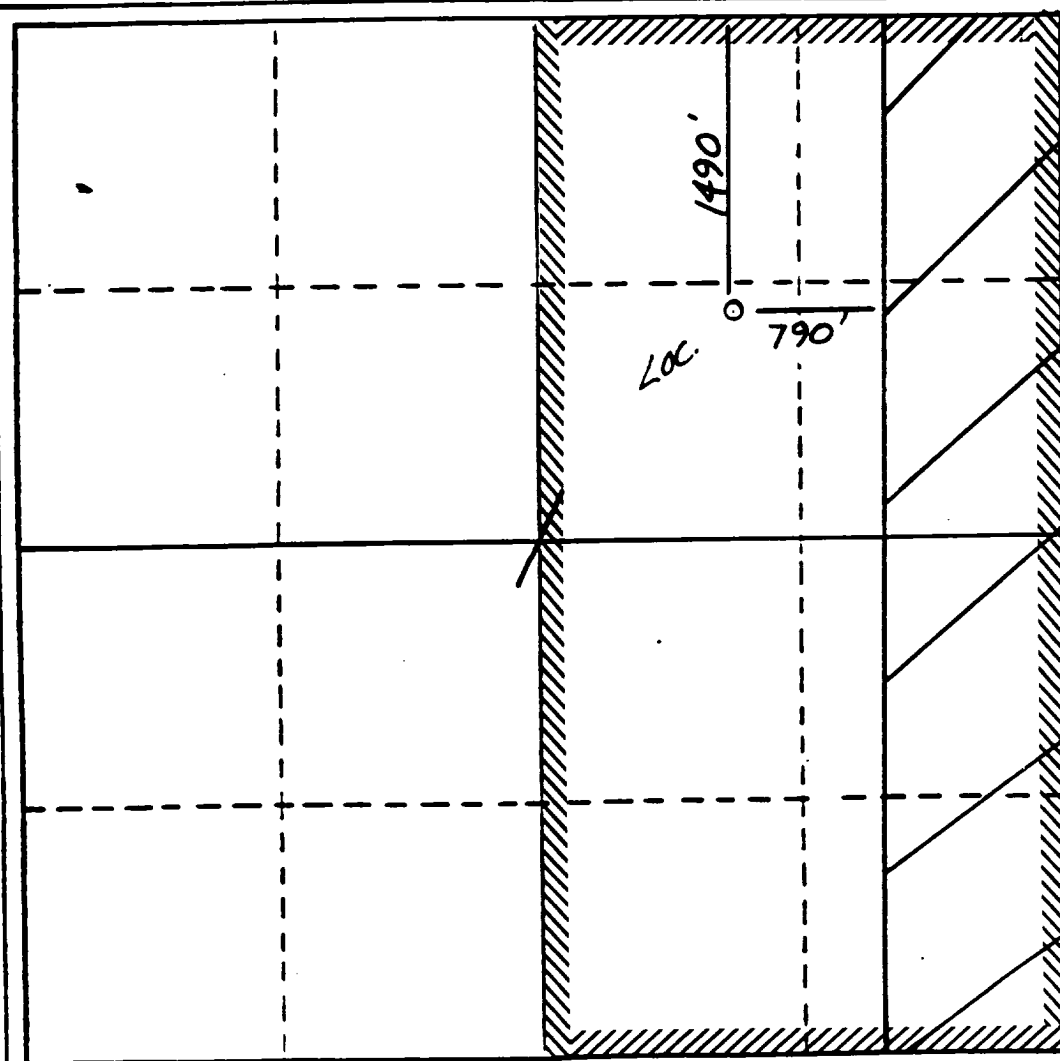
Operator Meridian Oil Inc.		Lease San Juan 31-6 Unit (NM-012299)		Well No. 201
Unit Letter G	Section 1	Township 30 North	Range 6 West	County Rio Arriba
Actual Footage Location of Wells 1490 feet from the North line and 790 feet from the East line				
Ground Level Elev. 6437	Producing Formation Fruitland Coal	Pool Basin	Dedicated Acreage: 226.61*	

1. Outline the acreage dedicated to the subject well by colored pencil or hachure marks on the plat below.
2. If more than one lease is dedicated to the well, outline each and identify the ownership thereof (both as to work interest and royalty).
3. If more than one lease of different ownership is dedicated to the well, have the interests of all owners been consolidated by communitization, unitization, force-pooling, etc?

☒ Yes ☐ No If answer is "yes," type of consolidation Unitization

If answer is "no," list the owners and tract descriptions which have actually been consolidated. (Use reverse side of this form if necessary.)

No allowable will be assigned to the well until all interests have been consolidated (by communitization, unitization, forced-pooling, or otherwise) or until a non-standard unit, eliminating such interests, has been approved by the Division.



CERTIFICATION

I hereby certify that the information contained herein is true and complete to the best of my knowledge and belief.

Name  
Regulatory Affairs

Position  
Meridian Oil Inc.

Company

Date

I hereby certify that the location shown on this plat was determined from notes of actual surveys made by me under my supervision, and that the same is true and correct to the best of my knowledge and belief.

Date Surveyed  
11-21-68

Registered Professional Engineer and/or Land Surveyor

Neale C. Edward

Certificate No.  
6857

