

APPLICATION FOR PERMIT TO DRILL, DEEPEN, OR PLUG BACK

NMOC

# OIL CONSERVATION DIVISION

P.O. Box 2088  
Santa Fe, New Mexico 87504-2088

DISTRICT I  
P.O. Box 1980, Hobbs, NM 88240

DISTRICT II  
P.O. Drawer DD, Artesia, NM 88210

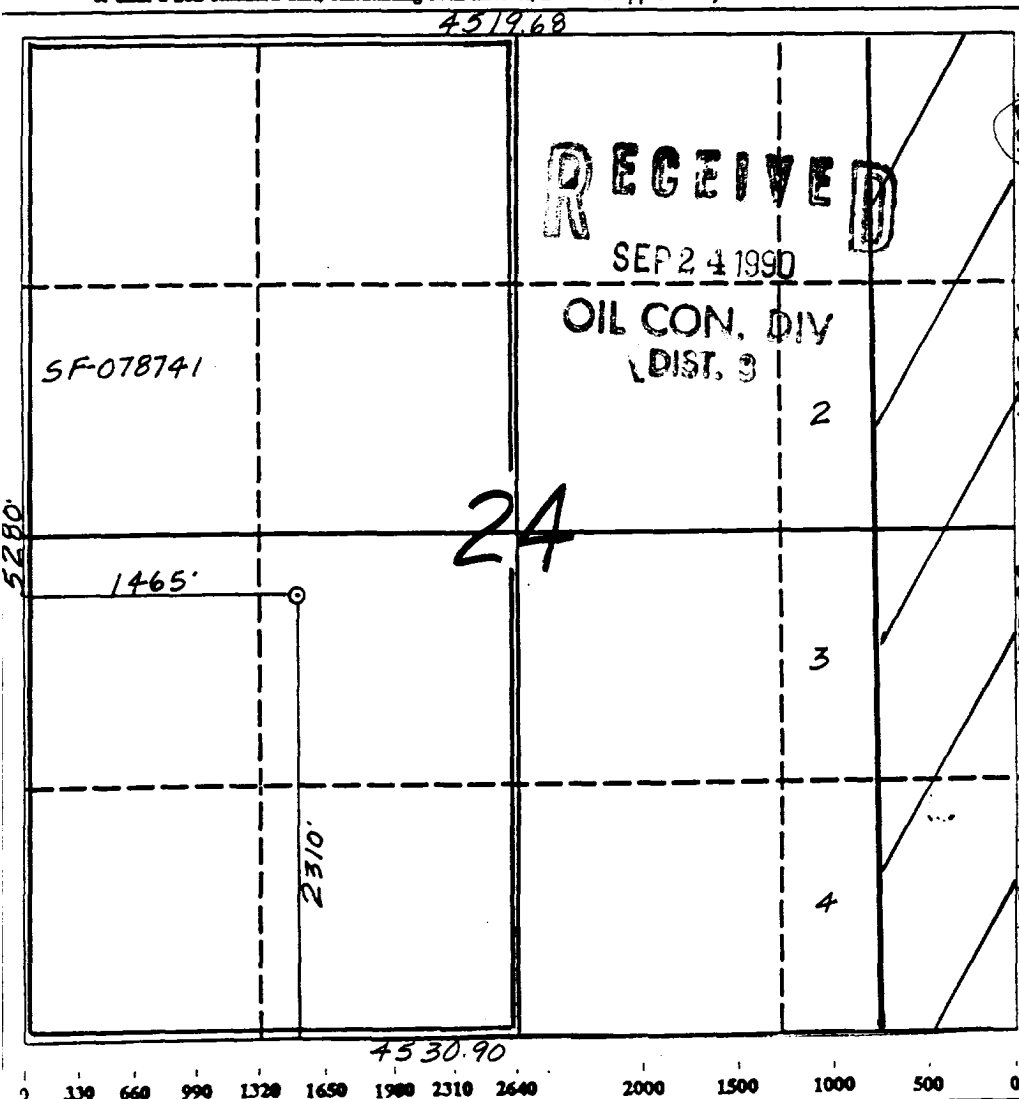
DISTRICT III  
1000 Rio Brazos Rd., Aztec, NM 87410

## WELL LOCATION AND ACREAGE DEDICATION PLAT

All Distances must be from the outer boundaries of the section

Operator <i>Meridian Oil Inc.</i> El Paso Natural Gas		Lease San Juan 30-6 Unit		Well No. (SF-07874) 489
Unit Letter K	Section 24	Township 30 North	Range 6 West NMPM	County Rio Arriba
Actual Footage Location of Well: 2310 feet from the South line and 1465 feet from the West line				
Ground level Elev. 6550'	Producing Formation Fruitland Coal	Pool Basin	Dedicated Acreage: 320 Acres	

- Outline the acreage dedicated to the subject well by colored pencil or hachure marks on the plat below.
- If more than one lease is dedicated to the well, outline each and identify the ownership thereof (both as to working interest and royalty).
- If more than one lease of different ownership is dedicated to the well, have the interest of all owners been consolidated by communitization, unitization, force-pooling, etc.?  
☒ Yes ☐ No If answer is "yes" type of consolidation unitization  
If answer is "no" list the owners and tract descriptions which have actually been consolidated. (Use reverse side of this form if necessary.)  
No allowable will be assigned to the well until all interests have been consolidated (by communitization, unitization, forced-pooling, or otherwise) or until a non-standard unit, eliminating such interest, has been approved by the Division.



### OPERATOR CERTIFICATION

I hereby certify that the information contained herein is true and complete to the best of my knowledge and belief.

Signature  
*Peggy Bradfield*  
Peggy Bradfield  
Printed Name  
Regulatory Affairs  
Position  
El Paso Natural Gas  
Company  
7-26-90  
Date

### SURVEYOR CERTIFICATION

I hereby certify that the well location shown on this plat was plotted from field notes or actual surveys made by me or under my supervision, and that the same is true and correct to the best of my knowledge and belief. 6-19-90

Date Surveyed  
*Neale C. Edwards*  
Signature  
Professional Surveyor  
NEW MEXICO  
6857  
6857  
Certificate No. 6857  
Neale C. Edwards

Well Name: 489 SAN JUAN 30-6 UNIT  
 Sec. 24 T30N R06W  
 BASIN FRUITLAND COAL

2310' FSL 1465' FWL  
 RIO ARriba NEW MEXICO  
 Elevation 6550' GL

Formation tops: Surface- San Jose  
 Ojo Alamo- 2645  
 Kirtland- 2740  
 Fruitland- 3170  
 Fruitland Coal Top- 3230  
 Fruitland Coal Base- 3384  
 Pictured Cliffs- 3508

Intermediate TD- 3210  
 Total Depth- 3386

Logging Program: Mud logs from intermediate to total depth.

Mud Program:	Interval	Type	Weight	Visc.	Fl. Loss
	0 - 200	Spud	8.4 - 8.9	40-50	no control
	200 - 3210	Non-dispersed	8.4 - 9.1	30-60	no control
	3210 - 3386	Formation Water	8.4		no control

Casing Program:	Hole Size	Depth Interval	Csg. Size	Weight	Grade
	12 1/4"	0 - 200	9 5/8"	32.3#	H-40
	8 3/4"	0 - 3210	7"	20.0#	K-55
	6 1/4"	3160 - 3386	5 1/2"	15.5#	K-55
Tubing Program:		0 - 3386	2 7/8"	6.5#	J-55

Float Equipment: 9 5/8" surface casing - saw tooth guide shoe. Centralizers will be run in accordance with Onshore Order #2.

7" intermediate casing - guide shoe and self-fill insert float valve. Three centralizers run every other joint above shoe. Run insert float one joint above the guide shoe. Two turbolizing type centralizers - one below and one into the base of the Ojo Alamo @ 2740'. Standard centralizers thereafter every fourth joint up to the base of the surface pipe.

5 1/2" production casing - float shoe on bottom and a pre-drilled liner run to the 7" casing with a minimum 50' overlap. Liner hanger is a double slip grip type.

Wellhead Equipment: 9 5/8" x 7" x 2 7/8" x 11" 3000 psi xmas tree assembly.

#### Cementing:

9 5/8" surface casing - cement with 160 sacks of class "B" cement with 1/4# flocele/sack and 3% calcium chloride (189 cu ft. of slurry, 200% excess to circulate to surface). WOC 12 hours. Test casing to 600 psi for 30 minutes.

7" intermediate casing - lead with 469 sacks of 65/35 class "B" poz with 6% gel, 2% calcium chloride and 1/2 cu ft. Perlite/sack (10.3 gallons of water/sack) tail with 100 sacks of class "B" with 2% calcium chloride. 1023 cu ft. of slurry, 110% excess to circulate to surface. If hole conditions permit, a 600 ft spacer will be run ahead of the cement slurry to avoid mud contamination of the cement. WOC 12 hours. If cement does not circulate to surface, a temperature log will be run after 8 hours to determine TOC.

5 1/2" liner - do not cement.

