

UNITED STATES
DEPARTMENT OF THE INTERIOR
BUREAU OF LAND MANAGEMENT

30-039-24947
APPLICATION FOR PERMIT TO DRILL, DEEPEN, OR PLUG BACK

1a. TYPE OF WORK DRILL	5. LEASE NUMBER NM-012709
1b. TYPE OF WELL GAS	6. IF INDIAN, ALL. OR TRIBE NAME
2. OPERATOR EL PASO NATURAL GAS CO. <i>Mesa Verde Oil Co.</i>	7. UNIT AGREEMENT NAME SAN JUAN 30-6 UNIT
3. ADDRESS & PHONE NO. OF OPERATOR P O BOX 4289 FARMINGTON, NM 87499	8. FARM OR LEASE NAME SAN JUAN 30-6 UNIT
4. LOCATION OF WELL 2185' FNL 2295' FEL	9. WELL NO. 498
14. DISTANCE IN MILES FROM NEAREST TOWN 4 MILES NAVAJO DAM P.O.	10. FIELD, POOL, OR WILDCAT BASIN FRUITLAND COAL
15. DISTANCE FROM PROPOSED LOCATION 2185' TO NEAREST PROPERTY OR LEASE LINE.	11. SEC. T. R. M OR BLK. SEC. 30 T30N R07W NMPM
16. ACRES IN LEASE 17. ACRES ASSIGNED TO WELL 1420.68 E/320.00	12. COUNTY 13. STATE RIO ARriba NM
18. DISTANCE FROM PROPOSED LOCATION TO NEAREST WELL DR. 500' COMPL., OR APPLIED FOR ON THIS LEASE.	20. ROTARY OR CABLE TOOLS ROTARY
21. ELEVATIONS (DF, FT, GR, ETC.) 6222' GL	22. APPROX. DATE WORK WILL START

23. PROPOSED CASING AND CEMENTING PROGRAM

*SEE OPERATIONS PLAN

24. AUTHORIZED BY: *[Signature]*

REG. DRILLING ENGR.

RECEIVED

OCT 1 1990

OIL CON. DIV.

DIST. 3

7/18/90
DATE

PERMIT NO. _____

APPROVAL DATE _____

APPROVED BY _____

TITLE _____

DATE _____

NOTE: THIS FORMAT IS ISSUED IN LIEU OF US BLM FORM 3160-3.

Held C-104 FOR NSC

[Signature]
For

Submit to Appropriate
District Office
State Lease - 4 copies
Fee Lease - 3 copies

State of New Mexico
Energy, Minerals and Natural Resources Department

Form C-102
Revised 1-1-89

OIL CONSERVATION DIVISION

DISTRICT I
P.O. Box 1980, Hobbs, NM 88240

P.O. Box 2088

Santa Fe, New Mexico 87504-2088

DISTRICT II
P.O. Drawer DD, Artesia, NM 88210

DISTRICT III
1000 Rio Brazos Rd., Aztec, NM 87410

WELL LOCATION AND ACREAGE DEDICATION PLAT

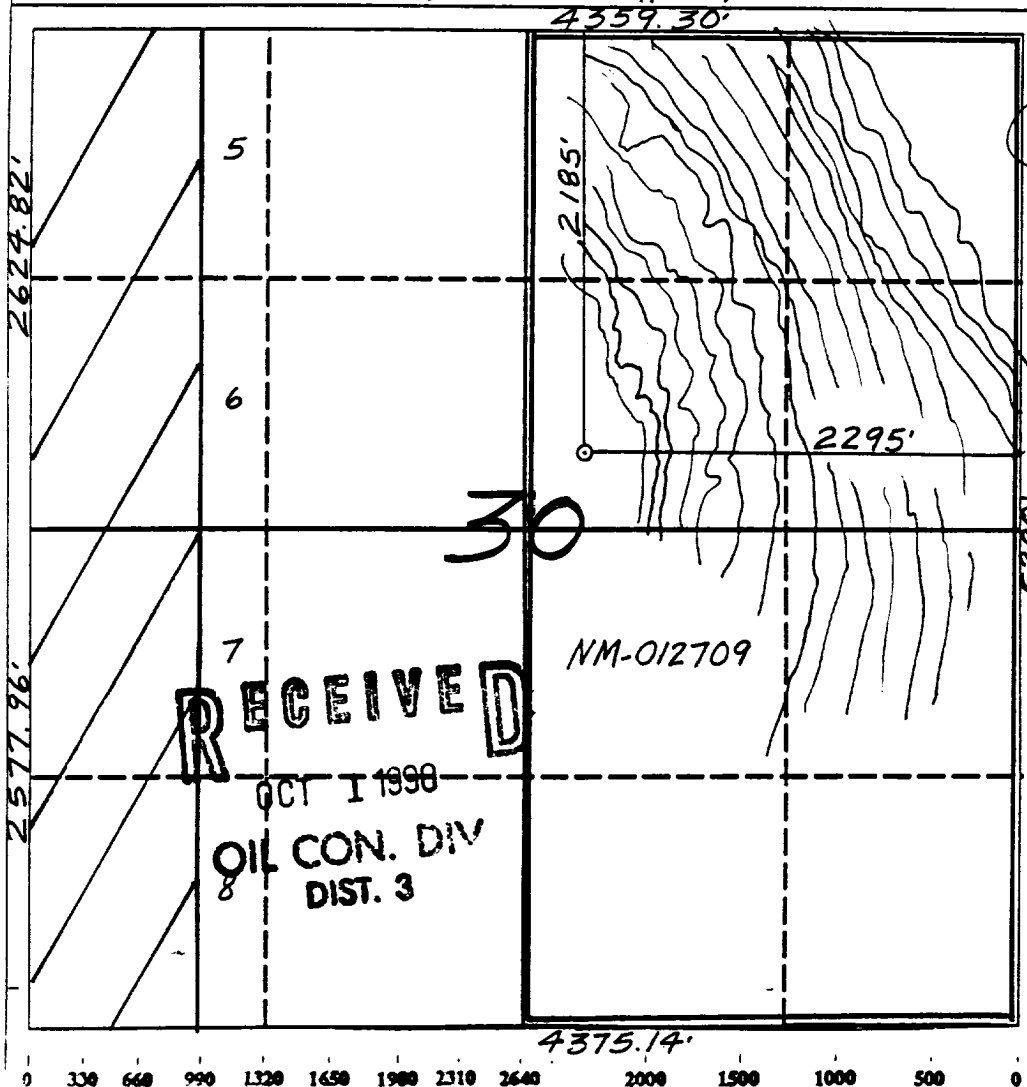
All Distances must be from the outer boundaries of the section

Operator <u>El Paso Natural Gas, District</u>			Lease <u>San Juan 30-6 Unit</u> (NM-012709)		Well No. <u>498</u>
Unit Letter <u>G</u>	Section <u>30</u>	Township <u>30 North</u>	Range <u>7 West</u>	County <u>NMPM Rio Arriba</u>	
Actual Footage Location of Well: <u>2185</u> feet from the <u>North</u> line and <u>2295</u> feet from the <u>East</u> line					
Ground level Elev. <u>6222'</u>	Producing Formation <u>Fruitland Coal</u>		Pool <u>Basin</u>	Dedicated Acreage: <u>320.00</u> Acres	

1. Outline the acreage dedicated to the subject well by colored pencil or hatchure marks on the plat below.
2. If more than one lease is dedicated to the well, outline each and identify the ownership thereof (both as to working interest and royalty).
3. If more than one lease of different ownership is dedicated to the well, have the interest of all owners been consolidated by communitization, unitization, force-pooling, etc.?
☒ Yes ☐ No If answer is "yes" type of consolidation unitization

If answer is "no" list the owners and tract descriptions which have actually been consolidated. (Use reverse side of this form if necessary.)

No allowable will be assigned to the well until all interests have been consolidated (by communitization, unitization, forced-pooling, or otherwise) or until a non-standard unit, eliminating such interest, has been approved by the Division.



OPERATOR CERTIFICATION

I hereby certify that the information contained herein is true and complete to the best of my knowledge and belief.

Signature Peggy Bradfield

Printed Name
Regulatory Affairs

Position
El Paso Natural Gas

Company
7-18-90

Date

SURVEYOR CERTIFICATION

I hereby certify that the well location shown on this plat was plotted from field notes of actual surveys made by me or under my supervision, and that the same is true and correct to the best of my knowledge and belief.

6-1-90

Date Surveyed

Signature Neale C. Edwards

Professional Seal
NEALE C. EDWARDS
REGISTERED LAND SURVEYOR
6857
6857
Certificate
Neale C. Edwards

Well Name: 498 SAN JUAN 30-6 UNIT
 Sec. 30 T30N R07W
 BASIN FRUITLAND COAL

2185' FNL 2295' FEL
 RIO ARRIBA NEW MEXICO
 Elevation 6222' GL

Formation tops: Surface- San Jose

Ojo Alamo- 1970

Kirtland- 2160

Fruitland- 2775

Fruitland Coal Top- 2949

Fruitland Coal Base- 3060

Pictured Cliffs- 3076

Intermediate TD- 2929

Total Depth- 3062

Logging Program: Mud logs from intermediate to total depth.

Mud Program:	Interval	Type	Weight	Visc.	Fl. Loss
	0 - 200	Spud	8.4 - 8.9	40-50	no control
	200 - 2929	Non-dispersed	8.4 - 9.1	30-60	no control
	2929 - 3062	Formation Water	8.4		no control

Casing Program:	Hole Size	Depth Interval	Csg. Size	Weight	Grade
	12 1/4"	0 - 200	9 5/8"	32.3#	H-40
	8 3/4"	0 - 2929	7"	20.0#	K-55
	6 1/4"	2879 - 3062	5 1/2"	15.5#	K-55
Tubing Program:		0 - 3062	2 7/8"	6.5#	J-55

Float Equipment: 9 5/8" surface casing - saw tooth guide shoe. Centralizers will be run in accordance with Onshore Order #2.

7" intermediate casing - guide shoe and self-fill insert float valve. Three centralizers run every other joint above shoe. Run insert float one joint above the guide shoe. Two turbolizing type centralizers - one below and one into the base of the Ojo Alamo @ 2160'. Standard centralizers thereafter every fourth joint up to the base of the surface pipe.

5 1/2" production casing - float shoe on bottom and a pre-drilled liner run to the 7" casing with a minimum 50' overlap. Liner hanger is a double slip grip type.

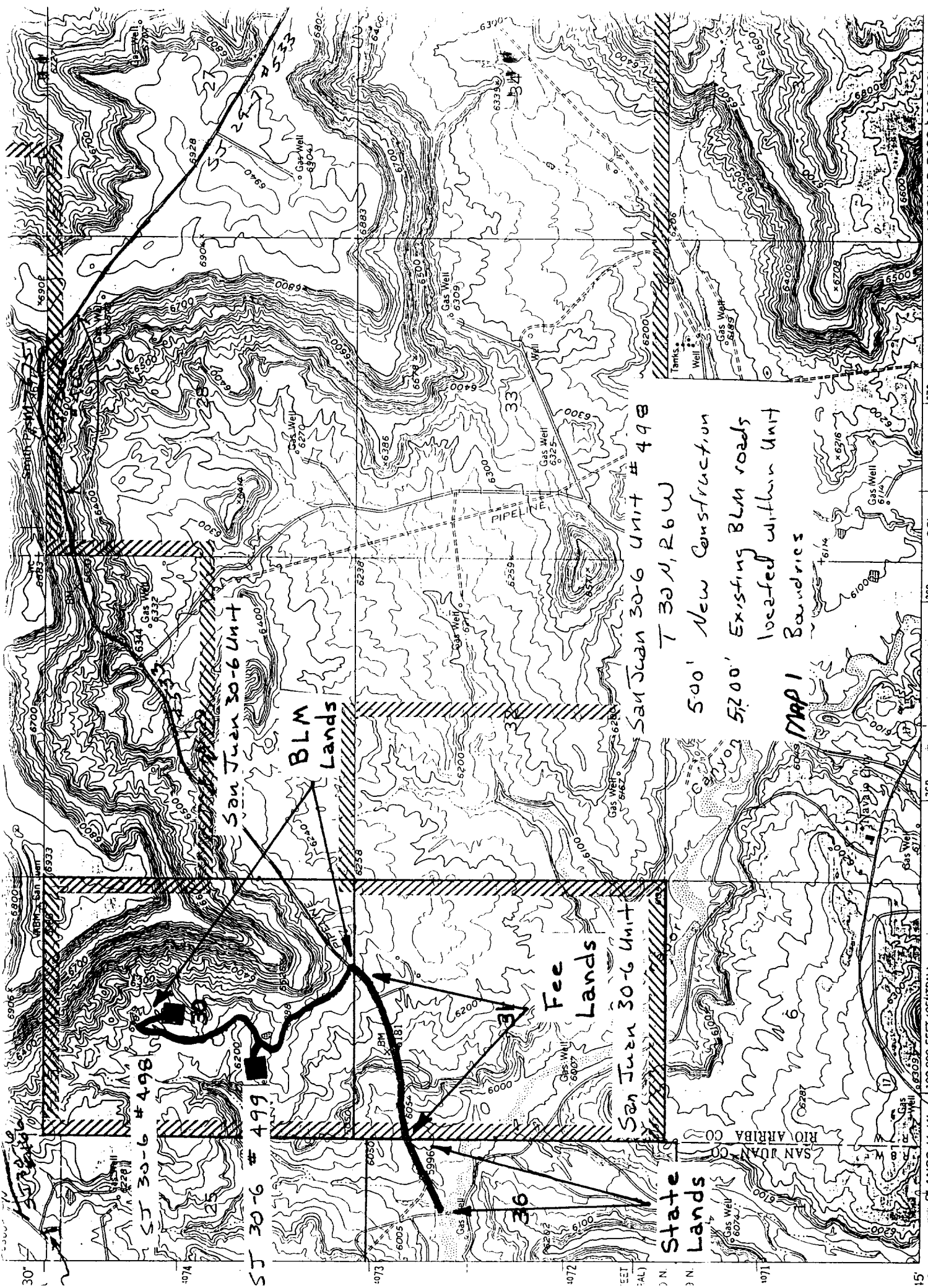
Wellhead Equipment: 9 5/8" x 7" x 2 7/8" x 11" 3000 psi xmas tree assembly.

Cementing:

9 5/8" surface casing - cement with 160 sacks of class "B" cement with 1/4# flocele/sack and 3% calcium chloride (189 cu ft. of slurry, 200% excess to circulate to surface). WOC 12 hours. Test casing to 600 psi for 30 minutes.

7" intermediate casing - lead with 423 sacks of 65/35 class "B" poz with 6% gel, 2% calcium chloride and 1/2 cu ft. Perlite/sack (10.3 gallons of water/sack) tail with 100 sacks of class "B" with 2% calcium chloride. 935 cu ft. of slurry, 110% excess to circulate to surface. If hole conditions permit, a 600 ft spacer will be run ahead of the cement slurry to avoid mud contamination of the cement. WOC 12 hours. If cement does not circulate to surface, a temperature log will be run after 8 hours to determine TOC.

5 1/2" liner - do not cement.



ST 30-6 #498

ST 30-6 #499

San Juan 30-6 Unit

BLM
Lands

Fee
Lands

San Juan 30-6 Unit

San Juan 30-6 Unit #498

T 30 N, R 6 W

500' New Construction
5200' Existing BLM roads
located within Unit
Boundaries

MAP 1

State
Lands

15° 07' 37" 30" BLANCO 14 MI. / 100 000 FEET (CENTRAL) (GOULD PASS 1:62 500) 4437 11

Map edited and published by the Continental Survey