

UNITED STATES
DEPARTMENT OF THE INTERIOR
BUREAU OF LAND MANAGEMENT

9-039-24966

APPLICATION FOR PERMIT TO DRILL, DEEPEN, OR PLUG BACK

1a. TYPE OF WORK

DRILL ☒

DEEPEN ☐

PLUG BACK ☐

b. TYPE OF WELL

OIL WELL ☐

GAS WELL ☒

OTHER

SINGLE ZONE ☒

MULTIPLE ZONE ☐

2. NAME OF OPERATOR

Phillips Petroleum Company

3. ADDRESS OF OPERATOR

300 W. Arrington, Suite 200, Farmington, N.M. 87401

4. LOCATION OF WELL (Report location clearly and in accordance with any State requirements.)*

At surface Unit G, 2094' FNL & 1833' FEL

At proposed prod. zone Unit G, 2094' FNL & 1833' FEL

14. DISTANCE IN MILES AND DIRECTION FROM NEAREST TOWN OR POST OFFICE*

15. DISTANCE FROM PROPOSED*
LOCATION TO NEAREST
PROPERTY OR LEASE LINE, FT.
(Also to nearest drlg. unit line, if any)

1833' FEL

16. NO. OF ACRES IN LEASE

320 Ac

17. NO. OF ACRES ASSIGNED
TO THIS WELL

320 Ac E/2 of Section

18. DISTANCE FROM PROPOSED LOCATION*
TO NEAREST WELL, DRILLING, COMPLETED,
OR APPLIED FOR, ON THIS LEASE, FT.

295' from #7

19. PROPOSED DEPTH

3160'

20. ROTARY OR CABLE TOOLS

Rotary

21. ELEVATIONS (Show whether DF, RT, GR, etc.)

6333' (GL Unprepared)

22. APPROX. DATE WORK WILL START*

Upon Approval

23.

PROPOSED CASING AND CEMENTING PROGRAM

DRILLING OPERATIONS AUTHORIZED ARE
SUBJECT TO COMPLIANCE WITH ATTACHED

SIZE OF HOLE	SIZE OF CASING	WEIGHT PER FOOT	SETTING DEPTH	"GENERAL REQUIREMENTS"
12-1/4"	9-5/8"	36#, K-55	250'	250' sxs, Circ to Surface
8-3/4"	7"	23#, K-55	3089'	650' sxs, Circ to Surface
6-1/8"	5-1/2"	15.5# or 23#	2989'-3160'	*

*If the coal is cleated a 5-1/2", 23#, P-110 liner will be run in the open hole without being cemented.

*If the coal is not cleated the well will be stimulated and a 5-1/2", 15.5#, J-55 liner will be run without being cemented.

RECEIVED

OCT 4 1990

OIL CON. DIV.
DIST. 3

Mud Program and BOP Equipment: See Attached

IN ABOVE SPACE DESCRIBE PROPOSED PROGRAM: If proposal is to deepen or plug back, give data on present productive zone and proposed new productive zone. If proposal is to drill or deepen directionally, give pertinent data on subsurface locations and measured and true vertical depths. Give blowout preventer program, if any.

24.

SIGNED JM Handus

TITLE Subv. Regulatory Affairs

DATE June/6, 1990

(This space for Federal or State office use)

PERMIT NO. _____

APPROVAL DATE _____

APPROVED BY _____

TITLE _____

CONDITIONS OF APPROVAL, IF ANY:

NMOOD

*See Instructions On Reverse Side

Submit to Appropriate
District Office
State Lease - 4 copies
Fee Lease - 3 copies

State of New Mexico
Energy, Minerals and Natural Resources Department

Form C-102
Revised 1-1-89

OIL CONSERVATION DIVISION

P.O. Box 2088
Santa Fe, New Mexico 87504-2088

DISTRICT I
P.O. Box 1980, Hobbs, NM 88240

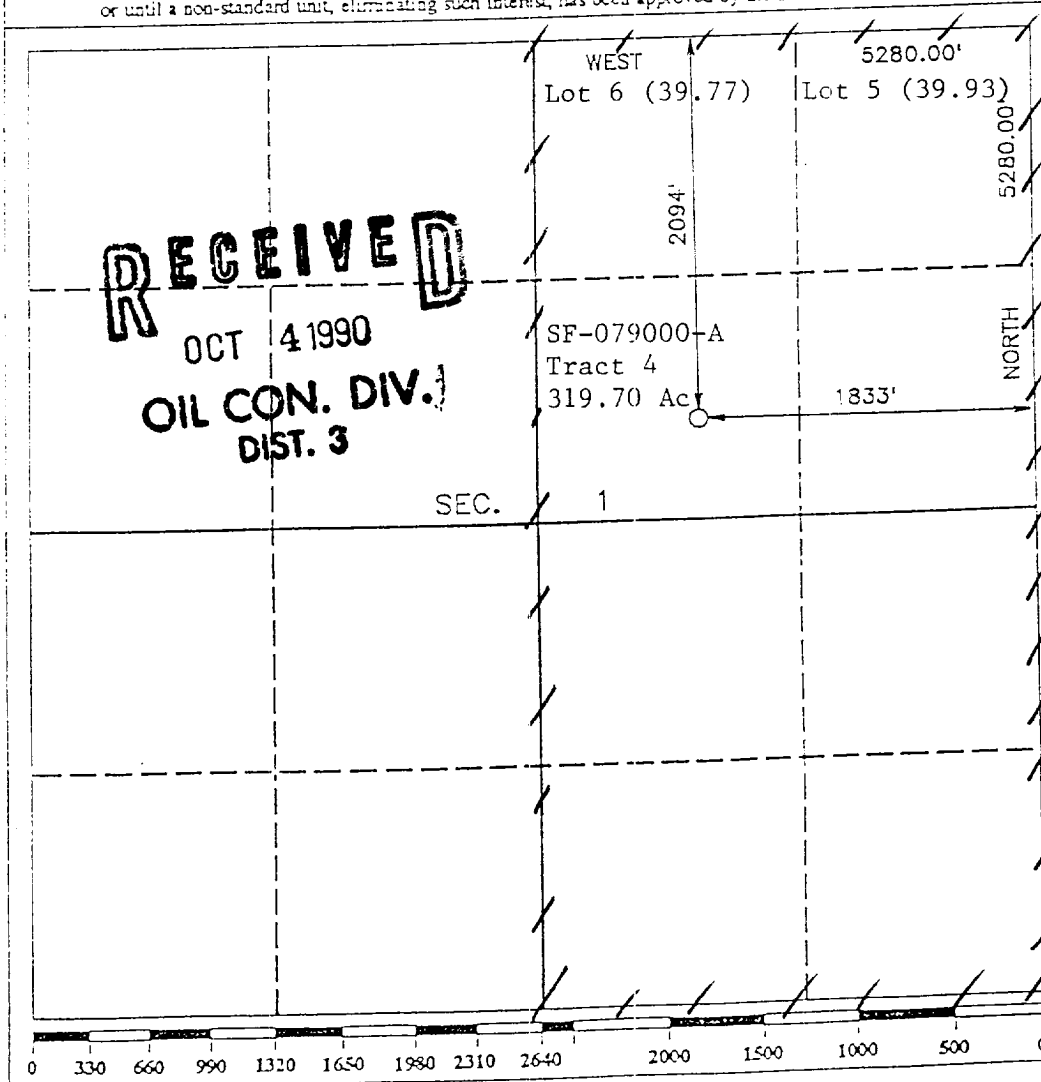
DISTRICT II
P.O. Drawer DD, Artesia, NM 88210

DISTRICT III
1000 Rio Brazos Rd., Aztec, NM 87410

WELL LOCATION AND ACREAGE DEDICATION PLAT
All Distances must be from the outer boundaries of the section

Operator PHILLIPS PETROLEUM			Lease SAN JUAN 31-6		Well No. 232
Unit Letter G	Section 1	Township T.30 N.	Range R.7 W.	County RIO ARriba COUNTY	
Actual Footage Location of Well: 2094 feet from the NORTH line and 1833 feet from the EAST line					
Ground level Elev. 6333	Producing Formation Fruitland			Pool Basin Fruitland Coal	
				Dedicated Acreage: 320 319.70 Acres	

- Outline the acreage dedicated to the subject well by colored pencil or hatchure marks on the plat below.
- If more than one lease is dedicated to the well, outline each and identify the ownership thereof (both as to working interest and royalty).
- If more than one lease of different ownership is dedicated to the well, have the interest of all owners been consolidated by communization, unitization, force-pooling, etc.?
☒ Yes ☐ No If answer is "yes" type of consolidation **Unitization**
If answer is "no" list the owners and tract descriptions which have actually been consolidated. (Use reverse side of this form if necessary.)
No allowable will be assigned to the well until all interests have been consolidated (by communization, unitization, forced-pooling, or otherwise) or until a non-standard unit, eliminating such interest, has been approved by the Division.



OPERATOR CERTIFICATION
I hereby certify that the information contained herein is true and complete to the best of my knowledge and belief.

Signature
L.M. Sanders
Printed Name
L.M. Sanders
Position
Supv. Regulatory Affairs
Company
Phillips Petroleum Co.
Date
June 16, 1990

SURVEYOR CERTIFICATION

I hereby certify that the well location shown on this plat was plotted from field notes of actual surveys made by me or under my supervision, and that the same is true and correct to the best of my knowledge and belief.

Date Surveyed
May 18, 1990
Signature & Seal
R. Howard Daggett
Professional Surveyor
R. HOWARD DAGGETT
Certificate No.
9678
Registered Professional
Land Surveyor