

UNITED STATES
DEPARTMENT OF THE INTERIOR
BUREAU OF LAND MANAGEMENT

30-039-25016

APPLICATION FOR PERMIT TO DRILL, DEEPEN, OR PLUG BACK

1A. TYPE OF WORK

DRILL ☒

DEEPEN ☐

PLUG BACK ☐

B. TYPE OF WELL

OIL
WELL ☐

GAS
WELL ☒

OTHER

SINGLE
ZONE ☒

MULTIPLE
ZONE ☐

2. NAME OF OPERATOR

Blackwood & Nichols Co., Ltd.

3. ADDRESS OF OPERATOR

P. O. Box 1237, Durango, Colorado 81302-1237

4. LOCATION OF WELL (Report location clearly and in accordance with any State requirements.)*

At surface

2380' FSL - 1790' FEL

At proposed prod. zone

1400' FNL - 1750' FEL

14. DISTANCE IN MILES AND DIRECTION FROM NEAREST TOWN OR POST OFFICE*

15 Miles NE of Blanco, New Mexico

15. DISTANCE FROM PROPOSED*

LOCATION TO NEAREST

PROPERTY OR LEASE LINE, FT.

(Also to nearest drlg. unit line, if any) Surface=260'

16. NO. OF ACRES IN LEASE

1779.91

18. DISTANCE FROM PROPOSED LOCATION*

TO NEAREST WELL, DRILLING, COMPLETED,
OR APPLIED FOR, ON THIS LEASE, FT.

1320'

19. PROPOSED DEPTH

3250' TVD, 3802'MD

17. NO. OF ACRES ASSIGNED
TO THIS WELL

E/ 320

20. ROTARY OR CABLE TOOLS

Rotary

21. ELEVATIONS (Show whether DF, RT, GR, etc.)

This action is subject to technical and

procedural review pursuant to 43 CFR 3165.3

and appeal pursuant to 43 CFR 3165.4.

6262' UGL

22. APPROX. DATE WORK WILL START*

August 15, 1990

PROPOSED CASING AND CEMENTING PROGRAM

DRILLING OPERATIONS AUTHORIZED ARE

SUBJECT TO COMPLIANCE WITH ATTACHED
"GENERAL REQUIREMENTS"

SIZE OF HOLE	SIZE OF CASING	WEIGHT PER FOOT	SETTING DEPTH
14-3/4"	10-5/8" 3/4	40.50#	400'
9-7/8"	7-5/8"	29.70#	2940' TVD
6-3/4"	5-1/2"	17#	3250' TVD

QUANTITY OF CEMENT
552 cuft., Circ. to surface
1220 cuft., Circ. to surface
39 cuft., Circ. to liner top
Cement is Optional

Propose to spud in the San Jose formation. Drill a 14-3/4 vertical surface hole to a TD of 400'. Run & Cement surface casing with cement returns to surface. WOC 12 hours. Test to 1000 psi/30 mins. Drill a 9-7/8 directional hole from under surface at a build angle of approx. 7°/100' to approx. 50°. Hold that angle to a point which will allow a 3° drop angle per 100' back to vertical at 2940' TVD with a 1500' horizontal displacement with fresh water mud. No abnormal pressures or poisonous gases are anticipated. Run and cement intermediate casing with cement returns to surface. WOC 12 hours. Test to 1500 psi for 30 mins. Drill a 6-3/4" vertical hole to a TVD of 3250' using air and water. A mud logging unit will be used while drilling this interval. Run the production liner. The production liner will be cemented if fracture stimulation is necessary.

Surface is Bureau of Reclamation/New Mexico State Parks.

IN ABOVE SPACE DESCRIBE PROPOSED PROGRAM: If proposal is to deepen or plug back, give data on present productive zone and proposed new productive zone. If proposal is to drill or deepen directionally, give pertinent data on subsurface locations and measured and true vertical depths. Give blowout preventer program, if any.

24.

SIGNED

R.W. Williams

TITLE

Administrative Manager

DATE

7/13/90

(This space for Federal or State office use)

PERMIT NO.

APPROVAL DATE

APPROVED BY

TITLE

CONDITIONS OF APPROVAL, IF ANY:

DATE

1990

Hold C-104 FOR DD and NMOC P&A of 423

*See Instructions On Reverse Side

State of New Mexico
Energy, Minerals and Natural Resources Department

Form C-102
Revised 1-1-89

OIL CONSERVATION DIVISION

P.O. Box 2088
Santa Fe, New Mexico 87504-2088

DISTRICT I
J. Box 1980, Hobbs, NM 88240

DISTRICT II
P.O. Drawer DD, Artesia, NM 88210

DISTRICT III
1000 Rio Brazos Rd., Aztec, NM 87410

WELL LOCATION AND ACREAGE DEDICATION PLAT

All Distances must be from the outer boundaries of the section

Operator Blackwood & Nichols Co., LTD.		Lease North East Blanco Unit		Well No. 423-R
Unit Letter J	Section 8	Township 30 North	Range 7 West	County Rio Arriba
Actual Footage Location of Well: Bottom Hole: 1400' FNL - 1750' FEL				
Surface: 2380 feet from the South line and 1790 feet from the East line				
Ground level Elev. 6262'	Producing Formation Fruitland Coal		Pool Basin Fruitland Coal	Dedicated Acreage: 320 Acres

1. Outline the acreage dedicated to the subject well by colored pencil or hatchure marks on the plat below.

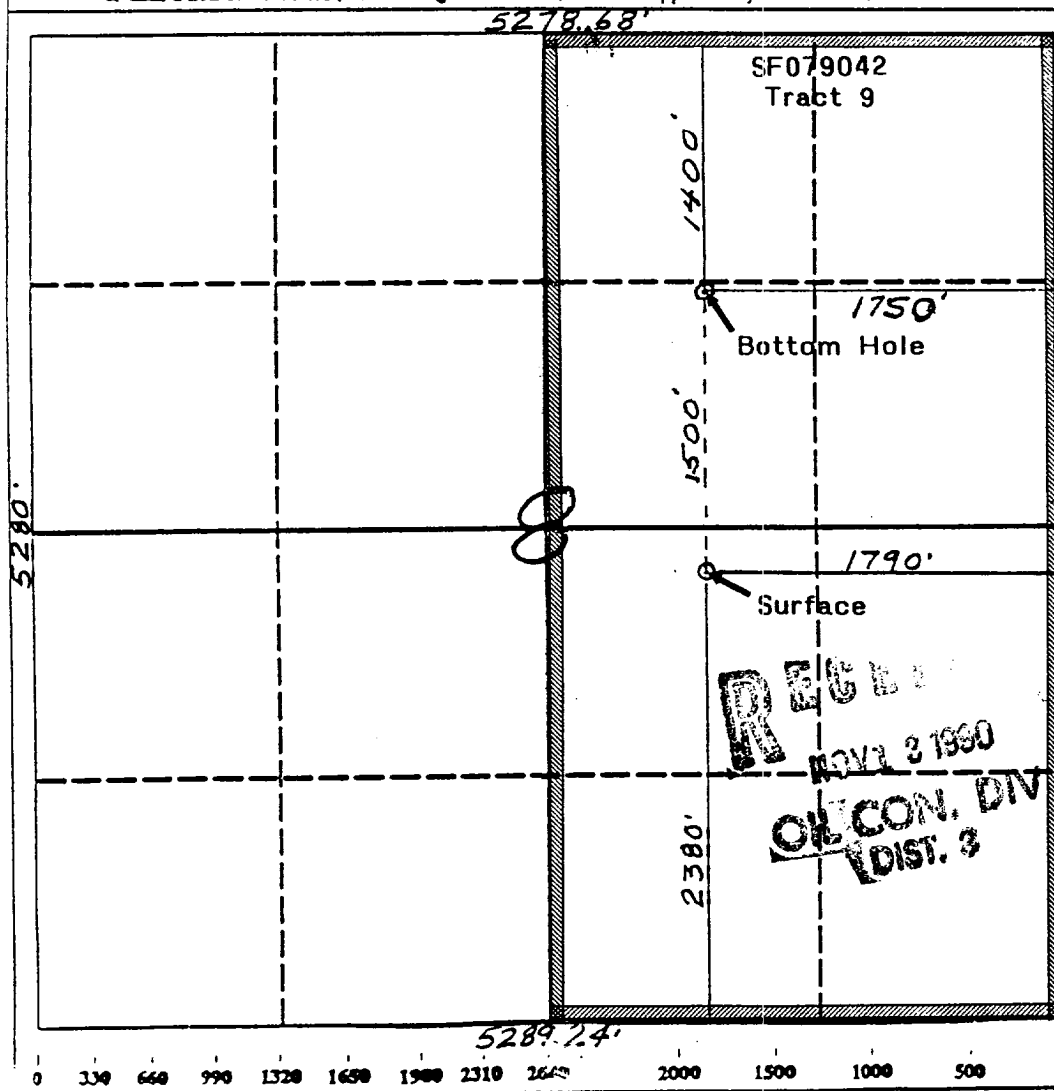
2. If more than one lease is dedicated to the well, outline each and identify the ownership thereof (both as to working interest and royalty).

3. If more than one lease of different ownership is dedicated to the well, have the interest of all owners been consolidated by communitization, unitization, force-pooling, etc.?

☒ Yes ☐ No If answer is "yes" type of communitization Unitization

If answer is "no" list the owners and tract descriptions which have actually been consolidated. (Use reverse side of this form if necessary.)

No allowable will be assigned to the well until all interests have been consolidated (by communitization, unitization, forced-pooling, or otherwise) or until a non-standard unit, eliminating such interest, has been approved by the Division.



OPERATOR CERTIFICATION

I hereby certify that the information contained herein is true and complete to the best of my knowledge and belief.

Signature
William F. Clark
Printed Name
William F. Clark
Position
Operations Manager
Company
Blackwood & Nichols Co., LTD.
Date
10 July 1990

SURVEYOR CERTIFICATION

I hereby certify that the well location shown on this plat was plotted from field notes of actual surveys made by me or under my supervision, and that the same is true and correct to the best of my knowledge and belief.

5-26-90

Date Surveyed
5-26-90
Signature
Neale Edwards
Professional Surveyor
NEW MEXICO
6857
REGISTERED LAND SURVEYOR
Neale Edwards