

UNITED STATES
DEPARTMENT OF THE INTERIOR
BUREAU OF LAND MANAGEMENT

APPLICATION FOR PERMIT TO DRILL, DEEPEN, OR PLUG BACK

1a. TYPE OF WORK DRILL	5. LEASE NUMBER SF-078741
1b. TYPE OF WELL GAS	6. IF INDIAN, ALL. OR TRIBE NAME
2. OPERATOR EL PASO NATURAL GAS CO. <i>Meredith Inc.</i>	7. UNIT AGREEMENT NAME SAN JUAN 30-6 UNIT
3. ADDRESS & PHONE NO. OF OPERATOR P O BOX 4289 FARMINGTON, NM 87499	8. FARM OR LEASE NAME SAN JUAN 30-6 UNIT
4. LOCATION OF WELL 810' FSL 1695' FWL	9. WELL NO. 487
14. DISTANCE IN MILES FROM NEAREST TOWN 8 MILES FROM GOVERNADOR	10. FIELD, POOL, OR WILDCAT BASIN FRUITLAND COAL
15. DISTANCE FROM PROPOSED LOCATION 810' TO NEAREST PROPERTY OR LEASE LINE.	11. SEC. T. R. M OR BLK. N SEC. 23 T30N R06W NMPM
16. ACRES IN LEASE 2378.68	12. COUNTY RIO ARRIBA
17. ACRES ASSIGNED TO WELL w/ 320.00	13. STATE NM
18. DISTANCE FROM PROPOSED LOCATION TO NEAREST WELL DR. 700' COMPL., OR APPLIED FOR ON THIS LEASE.	19. PROPOSED DEPTH 3710'
20. ROTARY OR CABLE TOOLS ROTARY	21. ELEVATIONS (DF, FT, GR, ETC.) 6739' GL
22. APPROX. DATE WORK WILL START	23. PROPOSED CASING AND CEMENTING PROGRAM
*SEE OPERATIONS PLAN	
RECEIVED	
NOV 20 1990	
24. AUTHORIZED BY: <i>[Signature]</i> REG. DRILLING ENGR.	OIL CON. DIV. 10/2/90 DIST. 3 DATE

PERMIT NO. _____ APPROVAL DATE _____ APPROVED BY _____ TITLE _____ DATE _____ AS AMENDED

NOTE: THIS FORMAT IS ISSUED IN LIEU OF US BLM FORM 3160-3.

NMOCD

NOV 19 1990
[Signature]
AREA MANAGER

Well Name: 487 SAN JUAN 30-6 UNIT
 Sec. 23 T30N R06W
 BASIN FRUITLAND COAL

810' FSL 1695' FWL
 RIO ARRIBA NEW MEXICO
 Elevation 6739' GL

Formation tops: Surface- SAN JOSE
 Ojo Alamo- 2980
 Kirtland- 3105
 Fruitland- 3480
 Fruitland Coal Top- 3572
 Fruitland Coal Base- 3708
 Pictured Cliffs- 3714

Intermediate TD- 3550
 Total Depth- 3710

Logging Program: Mud logs from intermediate to total depth.

Mud Program:	Interval	Type	Weight	Visc.	Fl. Loss
	0 - 400	Spud	8.4 - 8.9	40-50	no control
	400 - 3550	Non-dispersed	8.4 - 9.1	30-60	no control
	3550 - 3710	Formation Water	8.4		no control

Casing Program:	Hole Size	Depth Interval	Csg. Size	Weight	Grade
	12 1/4"	0 - 400	9 5/8"	32.3#	H-40
	8 3/4"	0 - 3550	7"	20.0#	K-55
	6 1/4"	3500 - 3710	5 1/2"	15.5#	K-55
Tubing Program:		0 - 3710	2 7/8"	6.5#	J-55

Float Equipment: 9 5/8" surface casing - saw tooth guide shoe. Centralizers will be run in accordance with Onshore Order #2.

7" intermediate casing - guide shoe and self-fill insert float valve. Three centralizers run every other joint above shoe. Run insert float one joint above the guide shoe. Two turbolizing type centralizers - one below and one into the base of the Ojo Alamo @ 3105'. Standard centralizers thereafter every fourth joint up to the base of the surface pipe.

5 1/2" production casing - float shoe on bottom and a pre-drilled liner run to the 7" casing with a minimum 50' overlap. Liner hanger is a double slip grip type.

Wellhead Equipment: 9 5/8" x 7" x 2 7/8" x 11" 3000 psi xmas tree assembly.

Cementing:

9 5/8" surface casing - cement with 319 sacks of class "B" cement with 1/4# flocele/sack and 3% calcium chloride (376 cu ft. of slurry, 200% excess to circulate to surface). WOC 12 hours. Test casing to 800 psi for 30 minutes.

7" intermediate casing - lead with 529 sacks of 65/35 class "B" poz with 6% gel, 2% calcium chloride and 1/2 cu ft. Perlite/sack (10.3 gallons of water/sack) tail with 100 sacks of class "B" with 2% calcium chloride. 1141 cu ft. of slurry, 110% excess to circulate to surface. If hole conditions permit, a 600 ft spacer will be run ahead of the cement slurry to avoid mud contamination of the cement. WOC 12 hours. If cement does not circulate to surface, a temperature log will be run after 8 hours to determine TOC.

5 1/2" liner - do not cement.

Submit to Aspropriate
District Office
State Lease - 4 copies
Fee Lease - 3 copies

State of New Mexico
Energy, Minerals and Natural Resources Department

Form C-102
Revised 1-1-89

OIL CONSERVATION DIVISION

P.O. Box 2088
Santa Fe, New Mexico 87504-2088

DISTRICT I
P.O. Box 1980, Hobbs, NM 88240

DISTRICT II
P.O. Drawer DD, Artesia, NM 88210

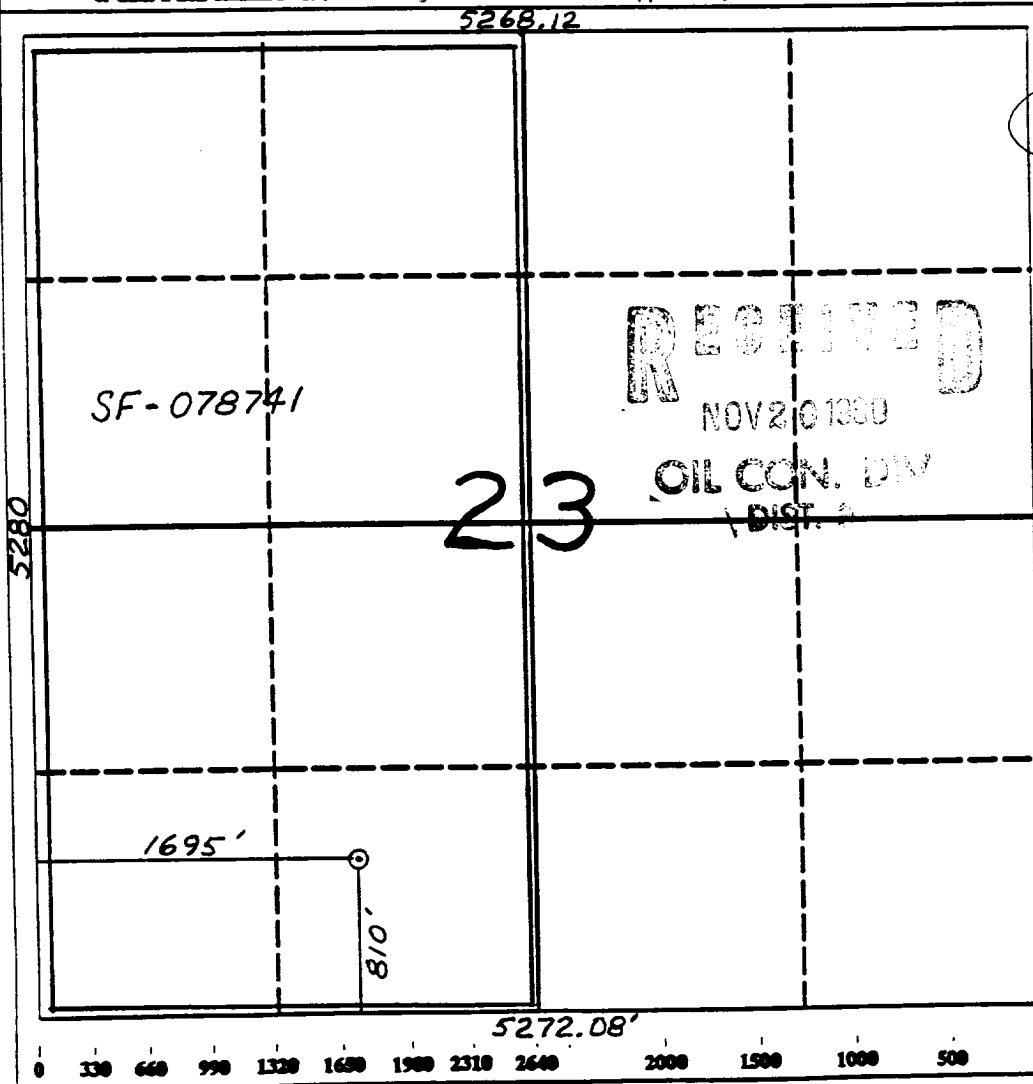
DISTRICT III
1000 Rio Brazos Rd., Aztec, NM 87410

WELL LOCATION AND ACREAGE DEDICATION PLAT

All Distances must be from the outer boundaries of the section

Operator <u>El Paso Natural Gas Co.</u>		Lease (SF-078741) San Juan 30-6 Unit		Well No. 487
Unit Letter N	Section 23	Township 30 North	Range 6 West	County NMPM Rio Arriba
Actual Footage Location of Well: 810 feet from the South line and 1695 feet from the West line				
Ground level Elev. 6739'	Producing Formation Fruitland Coal		Pool Basin	Dedicated Acreage: 320.00 Acres

- Outline the acreage dedicated to the subject well by colored pencil or hatchure marks on the plat below.
- If more than one lease is dedicated to the well, outline each and identify the ownership thereof (both as to working interest and royalty).
- If more than one lease of different ownership is dedicated to the well, have the interest of all owners been consolidated by communitization, unitization, force-pooling, etc.?
☒ Yes ☐ No If answer is "yes" type of consolidation unitization
If answer is "no" list the owners and tract descriptions which have actually been consolidated. (Use reverse side of this form if necessary.)
No allowable will be assigned to the well until all interests have been consolidated (by communitization, unitization, force-pooling, or otherwise) or until a non-standard unit, eliminating such interest, has been approved by the Division.



OPERATOR CERTIFICATION

I hereby certify that the information contained herein is true and complete to the best of my knowledge and belief.

Peggy Bradfield
Signature

Peggy Bradfield
Printed Name

Regulatory Affairs
Position

El Paso Natural Gas
Company

10-2-90
Date

SURVEYOR CERTIFICATION

I hereby certify that the well location shown on this plat was plotted from field notes of actual surveys made by me or under my supervision, and that the same is true and correct to the best of my knowledge and belief.

8-29-90
Date Surveyed

Neale C. Edwards
Signature

NEALE C. EDWARDS
Professional Surveyor
6857
6857

Neale C. Edwards
Certificate No.