

UNITED STATES
DEPARTMENT OF THE INTERIOR
BUREAU OF LAND MANAGEMENT

APPLICATION FOR PERMIT TO DRILL, DEEPEN, OR PLUG BACK

1a. TYPE OF WORK DRILL <input checked="" type="checkbox"/> DEEPEN <input type="checkbox"/> PLUG BACK <input type="checkbox"/>		6. LEASE DESIGNATION AND SERIAL NO. SF-078997	
b. TYPE OF WELL OIL WELL <input type="checkbox"/> GAS WELL <input checked="" type="checkbox"/> OTHER <input type="checkbox"/>		7. UNIT AGREEMENT NAME San Juan 30-5 Unit	
2. NAME OF OPERATOR Phillips Petroleum Company		8. FARM OR LEASE NAME	
3. ADDRESS OF OPERATOR 300 W. Arrington, Suite 200, Farmington, N.M. 87401		9. WELL NO. 220	
4. LOCATION OF WELL (Report location clearly and in accordance with any State requirements.) At surface Unit K, 2086' FSL & 1807' FWL At proposed prod. zone Unit K, 2086' FSL & 1807' FWL		10. FIELD AND POOL, OR WILDCAT Basin Fruitland Coal Gas	
14. DISTANCE IN MILES AND DIRECTION FROM NEAREST TOWN OR POST OFFICE*		11. SEC., T., R., M., OR BLK. AND SURVEY OR AREA Sec. 8, T-30-N, R-5-W	
15. DISTANCE FROM PROPOSED LOCATION TO NEAREST PROPERTY OR LEASE LINE, FT. (Also to nearest drig. unit line, if any) 1807' FWL		12. COUNTY OR PARISH Rio Arriba	
16. NO. OF ACRES IN LEASE 2560 Ac		13. STATE NM	
17. NO. OF ACRES ASSIGNED TO THIS WELL 320 Ac W/2 of Section		14. DISTANCE FROM PROPOSED LOCATION TO NEAREST WELL, DRILLING, COMPLETED, OR APPLIED FOR, ON THIS LEASE, FT. 476' from #37	
18. PROPOSED DEPTH 3065'		15. DISTANCE FROM PROPOSED LOCATION TO NEAREST WELL, DRILLING, COMPLETED, OR APPLIED FOR, ON THIS LEASE, FT. 476' from #37	
19. ROTARY OR CABLE TOOLS Rotary		20. APPROX. DATE WORK WILL START* Upon Approval	
21. ELEVATIONS (Show whether DF, RT, GR, etc.) This action is subject to technical and procedural review pursuant to 43 CFR 3165.3 and appeal pursuant to 43 CFR 3165.4. 6317' (GL Unprepared)		22. APPROX. DATE WORK WILL START* Upon Approval	
23. PROPOSED CASING AND CEMENTING PROGRAM			

SIZE OF HOLE	SIZE OF CASING	WEIGHT PER FOOT	SETTING DEPTH	GENERAL QUANTITY OF CEMENT
12-1/4"	9-5/8"	36#, K-55	250'	250' sxs, Circ to Surface
8-3/4"	7"	23#, K-55	2941'	650 sxs, Circ to Surface
6-1/8"	5-1/2"	15.5# or 23#	2841'-3065'	*

*If the coal is cleated a 5-1/2", 23#, P-110 liner will be run in the open hole without being cemented.

*If the coal is not cleated the well will be stimulated and a 5-1/2", 15.5#, J-55 liner will be run without being cemented.

RECEIVED

APR 15 1991

OIL CON. DIV.)
DIST. 3

Mud Program and BOP Equipment: See Attached

IN ABOVE SPACE DESCRIBE PROPOSED PROGRAM: If proposal is to deepen or plug back, give data on present productive zone and proposed new productive zone. If proposal is to drill or deepen directionally, give pertinent data on subsurface locations and measured and true vertical depths. Give blowout preventer program, if any.

24.

SIGNED *Jm Sanders*

TITLE Supv. Regulatory Affairs

DATE 4/14/90

(This space for Federal or State office use)

APPROVED
AS AMENDED

PERMIT NO.

APPROVAL DATE

APPROVED BY
CONDITIONS OF APPROVAL, IF ANY:

TITLE

NMOCD

APR 15 1991
AREA MANAGER

RECEIVED
OIL COMPANY
JUL 1 1963

APPROVED
AS AMENDED
JUL 1 1963
JUL 1 1963

Submit to Appropriate
District Office
State Lease - 4 copies
Fee Lease - 3 copies

State of New Mexico
Energy, Minerals and Natural Resources Department

Form C-102
Revised 1-1-89

OIL CONSERVATION DIVISION

P.O. Box 2088
Santa Fe, New Mexico 87504-2088

DISTRICT I
P.O. Box 1980, Hobbs, NM 88240

DISTRICT II
P.O. Drawer DD, Artesia, NM 88210

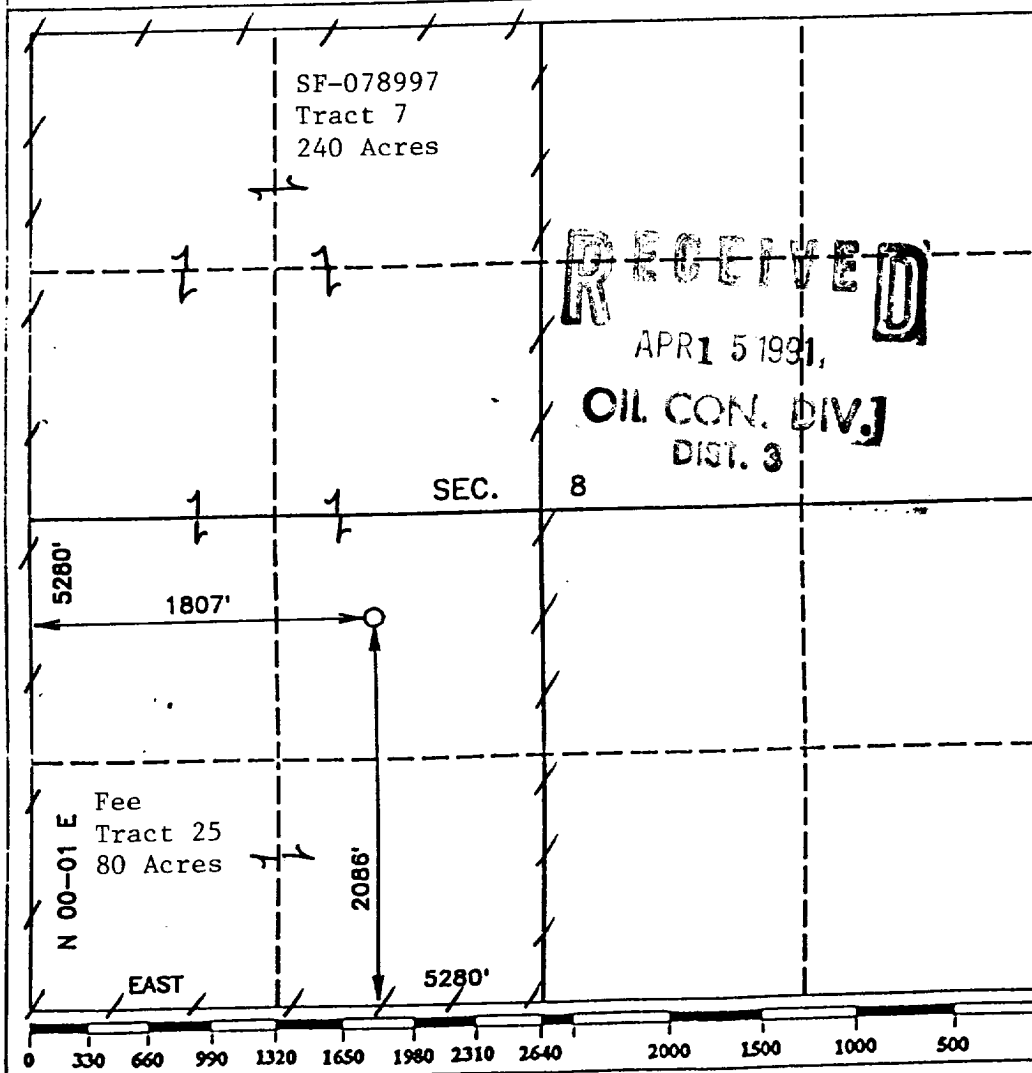
DISTRICT III
1000 Rio Brazos Rd., Aztec, NM 87410

WELL LOCATION AND ACREAGE DEDICATION PLAT

All Distances must be from the outer boundaries of the section

Operator PHILLIPS PETROLEUM		Lease SAN JUAN 30-5 UNIT		Well No. 220
Unit Letter K	Section 8	Township T.30 N.	Range R.5 W.	County RIO ARriba COUNTY
Actual Footage Location of Well: 2086 feet from the SOUTH line and 1807 feet from the WEST line				
Ground level Elev. 6317	Producing Formation Fruitland	Pool Basin Fruitland Coal	Dedicated Acreage: 320 Acres	

- Outline the acreage dedicated to the subject well by colored pencil or hatchure marks on the plat below.
- If more than one lease is dedicated to the well, outline each and identify the ownership thereof (both as to working interest and royalty).
- If more than one lease of different ownership is dedicated to the well, have the interest of all owners been consolidated by communitization, unitization, force-pooling, etc.?
☒ Yes ☐ No If answer is "yes" type of consolidation Unitization
If answer is "no" list the owners and tract descriptions which have actually been consolidated. (Use reverse side of this form if necessary.)
No allowable will be assigned to the well until all interests have been consolidated (by communitization, unitization, forced-pooling, or otherwise) or until a non-standard unit, eliminating such interest, has been approved by the Division.



OPERATOR CERTIFICATION

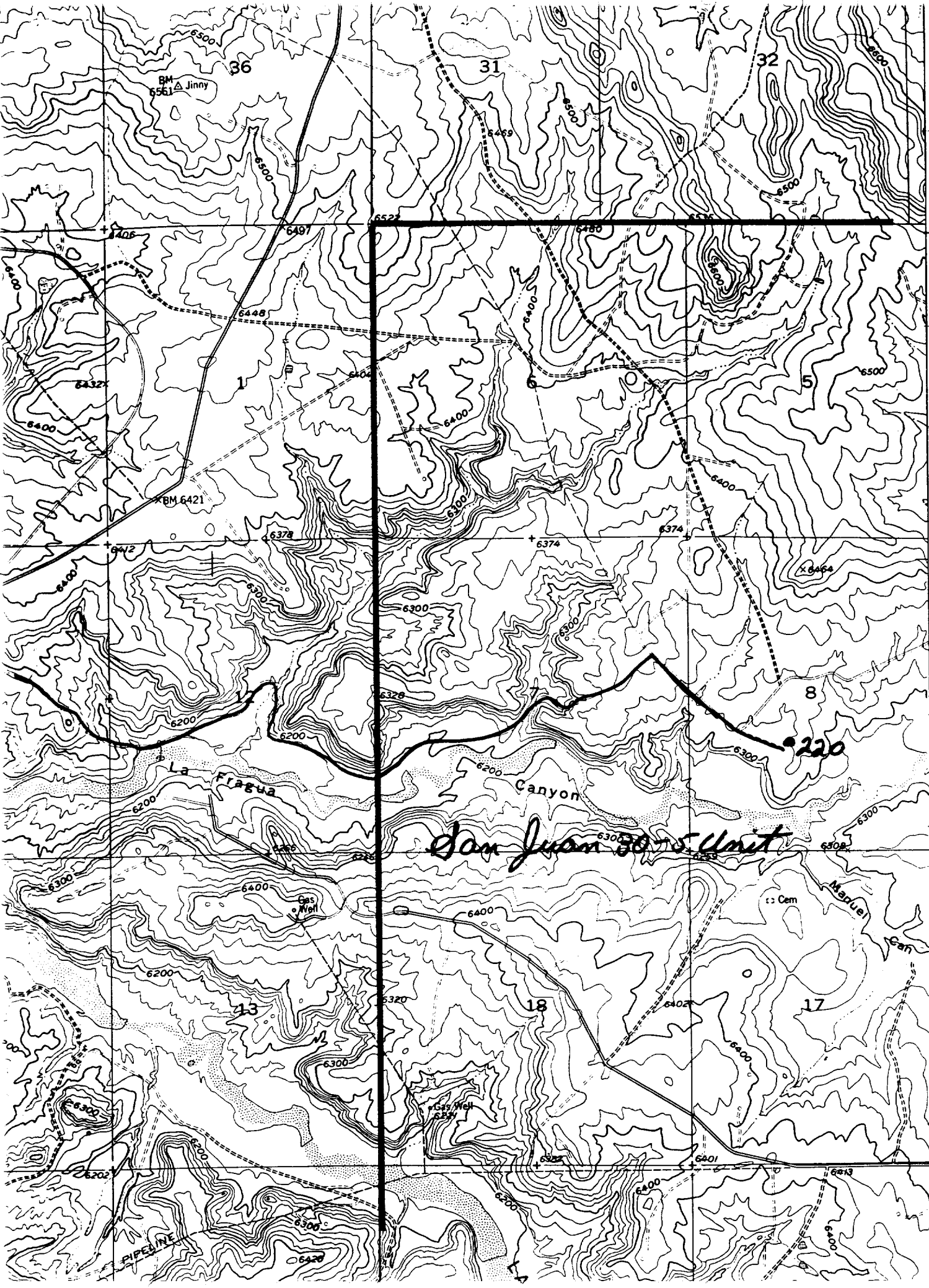
I hereby certify that the information contained herein is true and complete to the best of my knowledge and belief.

Signature
L.M. Sanders
Printed Name
L.M. Sanders
Position
Supv. Regulatory Affairs
Company
Phillips Petroleum Co.
Date
6/14/90

SURVEYOR CERTIFICATION

I hereby certify that the well location shown on this plat was plotted from field notes of actual surveys made by me or under my supervision, and that the same is true and correct to the best of my knowledge and belief.

Date Surveyed
MAY 17, 1990
Signature & Seal of Professional Surveyor
R. HOWARD DAGGETT
Certificate No.
Reg 8679
Professional Land Surveyor



481
T. 31 N.
2 130 000
FEET
T. 30 N.
480
479
50'
478
477
476
IESPINOSA RANCH)
4557 IV SE