

UNITED STATES  
DEPARTMENT OF THE INTERIOR  
BUREAU OF LAND MANAGEMENT

30-034-25071

APPLICATION FOR PERMIT TO DRILL, DEEPEN, OR PLUG BACK

1a. TYPE OF WORK

DRILL ☒

DEEPEN ☐

PLUG BACK ☐

b. TYPE OF WELL

OIL WELL ☐

GAS WELL ☒

OTHER

SINGLE ZONE ☒

MULTIPLE ZONES ☐

2. NAME OF OPERATOR

Phillips Petroleum Company 17654

3. ADDRESS OF OPERATOR

300 W. Arrington, Suite 200, Farmington, N.M. 87401

4. LOCATION OF WELL (Report location clearly and in accordance with any State requirements.)

At surface 2303' FSL & 1575' FWL, Unit K

At proposed prod. zone Same as above

14. DISTANCE IN MILES AND DIRECTION FROM NEAREST TOWN OR POST OFFICE\*

Approx. 25 miles East of Blanco

16. DISTANCE FROM PROPOSED LOCATION TO NEAREST PROPERTY OR LEASE LINE, FT. (Also to nearest drg. unit line, if any)

463' from SJ 30-5 #31

18. NO. OF ACRES IN LEASE

2219.76

18. DISTANCE FROM PROPOSED LOCATION TO NEAREST WELL, DRILLING, COMPLETED, OR APPLIED FOR, ON THIS LEASE, FT.

19. PROPOSED DEPTH

3425'

17. NO. OF ACRES ASSIGNED TO THIS WELL

20. ROTARY OR CABLE TOOLS

Rotary

21. ELEVATIONS (Show whether DF, RT, GR, etc.)

6492' (GL Unprepared)

This action is subject to technical and procedural review pursuant to 43 CFR 3125.3

22. APPROX. DATE WORK WILL START\*

Upon Approval

23. PROPOSED CASING AND CEMENTING PROGRAM

SIZE OF HOLE	SIZE OF CASING	WEIGHT PER FOOT	SETTING DEPTH	QUANTITY OF CEMENT
12-1/4"	9-5/8"	36#, K-55	250'	200 sxs, Circ to Surface
8-3/4"	7"	23#, K-55	3300'	600 sxs, Circ to Surface
6-1/8"	5-1/2"	15.5# or 23#	3200'-3425'	*

\*If the coal is cleated a 5-1/2", 23#, P-110 liner will be run in the open hole without being cemented.

\*If the coal is not cleated a 5-1/2", 15.5#, K-55 liner will be run, cemented with 100 sxs cement and the well fractured.

RECEIVED

DEC 17 1991

OIL CON. DIV.  
DIST. 3

Mud Program and BOP Equipment: See Attached

IN ABOVE SPACE DESCRIBE PROPOSED PROGRAM: If proposal is to deepen or plug back, give data on present productive zone and proposed new productive zone. If proposal is to drill or deepen directionally, give pertinent data on subsurface locations and measured and true vertical depths. Give blowout preventer program, if any.

24.

SIGNED

L. E. Robinson

TITLE

Sr. Drlg & Prod Engineer

DATE

8-23-91

(This space for Federal or State office use)

PERMIT NO.

APPROVAL DATE

APPROVED  
AS AMENDED

APPROVED BY  
CONDITIONS OF APPROVAL, IF ANY:

TITLE

DEC 16 1991  
AREA MANAGER

NM000

\*See Instructions On Reverse Side

Submit to Appropriate  
District Office  
State Lease - 4 copies  
Fee Lease - 3 copies

DISTRICT I  
P.O. Box 1980, Hobbs, NM 88240

DISTRICT II  
P.O. Drawer DD, Azusa, NM 88210

DISTRICT III  
1000 Rio Brazos Rd., Aztec, NM 87410

State of New Mexico  
Energy, Minerals and Natural Resources Department

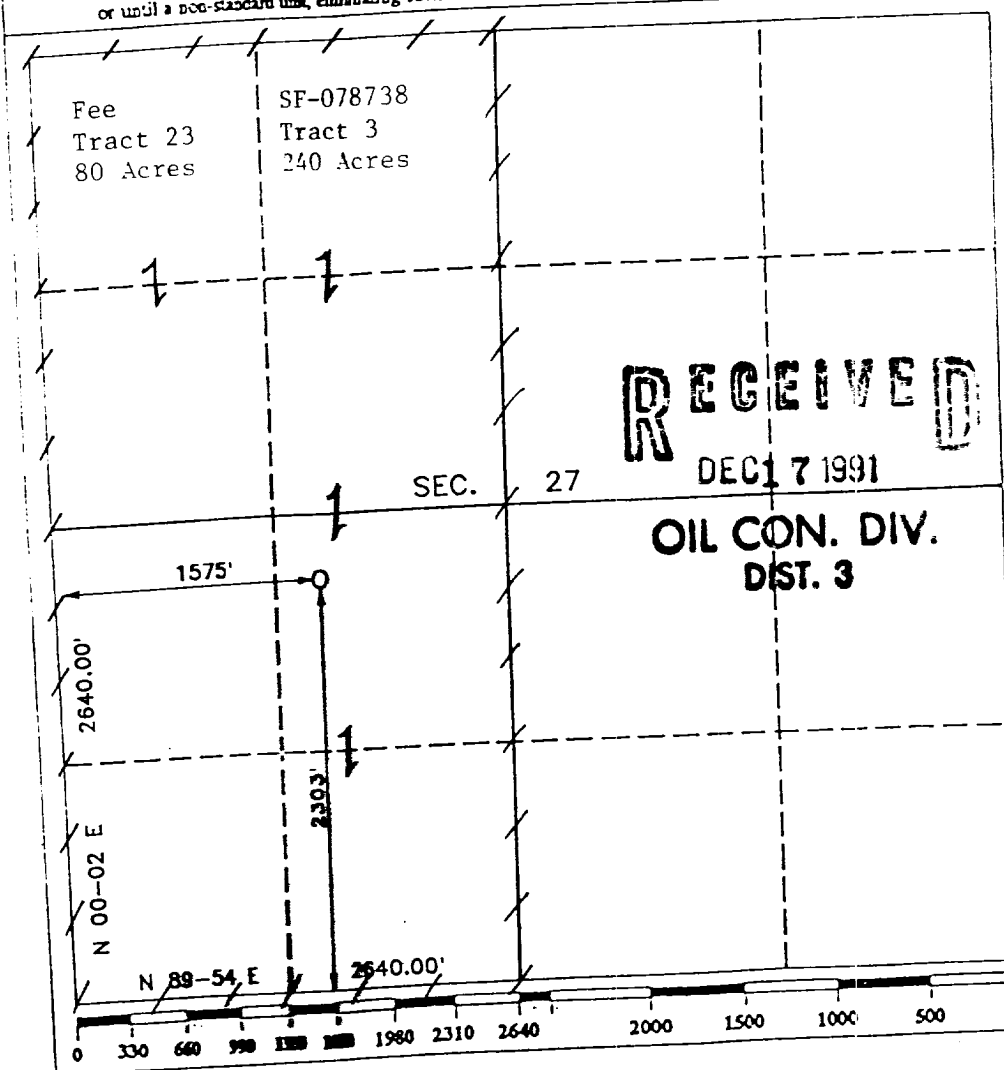
OIL CONSERVATION DIVISION

P.O. Box 2088  
Santa Fe, New Mexico 87504-2088

WELL LOCATION AND ACREAGE DEDICATION PLAT  
All Distances must be from the outer boundaries of the section

Operator <b>PHILLIPS PETROLEUM</b>		Lease <b>SAN JUAN 30-5 UNIT</b>		Well No. <b>236</b>
Unit Letter <b>K</b>	Section <b>27</b>	Township <b>T.30 N.</b>	Range <b>R.5 W.</b>	County <b>RIO ARriba COUNTY</b>
Actual Footage Location of Well: <b>2303</b> feet from the <b>SOUTH</b> line and <b>1575</b> feet from the <b>WEST</b> line				
Ground level Elev. <b>6492</b>	Producing Formation <b>Fruitland</b>		Pool <b>Basin Fruitland Coal</b>	Dedicated Acreage: <b>320</b> Acres

1. Outline the acreage dedicated to the subject well by colored pencil or hatchure marks on the plat below.
2. If more than one lease is dedicated to the well, outline each and identify the ownership thereof (both as to working interest and royalty).
3. If more than one lease of different ownership is dedicated to the well, have the interest of all owners been consolidated by communitization, unitization, force-pooling, etc.?  
☐ Yes ☐ No If answer is "yes" type of consolidation \_\_\_\_\_  
If answer is "no" list the owners and tract descriptions which have actually been consolidated. (Use reverse side of this form if necessary.)  
No allowable will be assigned to the well until all interests have been consolidated (by communitization, unitization, forced-pooling, or otherwise) or until a non-standard unit, eliminating such interest, has been approved by the Division.



OPERATOR CERTIFICATION

I hereby certify that the information contained herein is true and complete to the best of my knowledge and belief.

Signature

Printed Name

**I. E. Robinson**

Position

**Sr. Drlg. & Prod. Engr.**

Company

**Phillips Petroleum Co.**

Date

**8-23-91**

SURVEYOR CERTIFICATION

I hereby certify that the well location shown on this plat was plotted from field notes of actual surveys made by me or under my supervision, and that the same is true and correct to the best of my knowledge and belief.

Date Surveyed

**APRIL 24, 1991**

Signature of Surveyor  
Professional Surveyor

**HENRY BROADHURST, JR.**

**NEWBROADHURST, JR.**

**12399**

**11303**

**PROFESSIONAL SURVEYOR**

OFFICE OF THE  
ATTORNEY GENERAL  
STATE OF TEXAS  
AUGUST 1, 1900  
DALLAS, TEXAS

