

UNITED STATES
DEPARTMENT OF THE INTERIOR
BUREAU OF LAND MANAGEMENT

Sundry Notices and Reports on Wells

1. Type of Well
GAS

2. Name of Operator
Meridian Oil Inc.

3. Address & Phone No. of Operator
Box 4289, Farmington, NM 87499 (505) 326-9700

4. Location of Well, Footage, Sec, T, R, M.
2240'S, 1430'W Sec.2, T-30-N, R-4-W, NMPM

5. Lease Number
SF-079482

6. If Indian, All. or
Tribe Name

7. Unit Agreement Name

8. Well Name & Number
Simms Federal #303

9. API Well No.

10. Field and Pool
Basin Fruitland Coal/
East Blanco Pic. Cliffs

11. County and State
Rio Arriba County, NM

12. CHECK APPROPRIATE BOX TO INDICATE NATURE OF NOTICE, REPORT, OTHER DATA

Type of Submission

☒ Notice of Intent

☐ Subsequent Report

☐ Final Abandonment

Type of Action

☐ Abandonment

☐ Recompletion

☐ Plugging Back

☐ Casing Repair

☐ Altering Casing

☐ Other

☒ Change of Plans

☐ New Construction

☐ Non-Routine Fracturing

☐ Water Shut Off

☐ Conversion to Injection

13. Describe Proposed or Completed Operations

It is intended to drill and complete this well as a commingled Fruitland Coal- Pictured Cliffs dual to a total depth of 4110'.

The original APD for this location was approved by the Bureau of Land Management on 7-16-91 as a single Fruitland Coal completion. Attached is a copy of the revised operations plan, BOP diagrams and C-102 plat.

Application is being made with the New Mexico Oil Conservation Division for a commingling order. It is intended to commingle the Fruitland Coal - Pictured Cliffs production pending NMOCD approval.

14. I hereby certify that the foregoing is true and correct

Signed [Signature] Title Regulatory Affairs Date 9-13-91

(This space for Federal or State office use)

APPROVED BY _____ TITLE _____
CONDITION OF APPROVAL, IF ANY: _____

Well PC-104 for N52

**APPROVED
AS AMENDED**

SEP 18 1991
Original Signed: STEPHEN M. [Signature]
AREA MANAGER

Submit to Addressee
District Office
State Lease - 4 copies
Fee Lease - 3 copies

State of New Mexico
Energy, Minerals and Natural Resources Department

Form C-107
Revised 1-1

OIL CONSERVATION DIVISION

P.O. Box 2088

Santa Fe, New Mexico 87504-2088

DISTRICT I
P.O. Box 1980, Hobbs, NM 88240

DISTRICT II
P.O. Drawer 00, Azusa, NM 88210

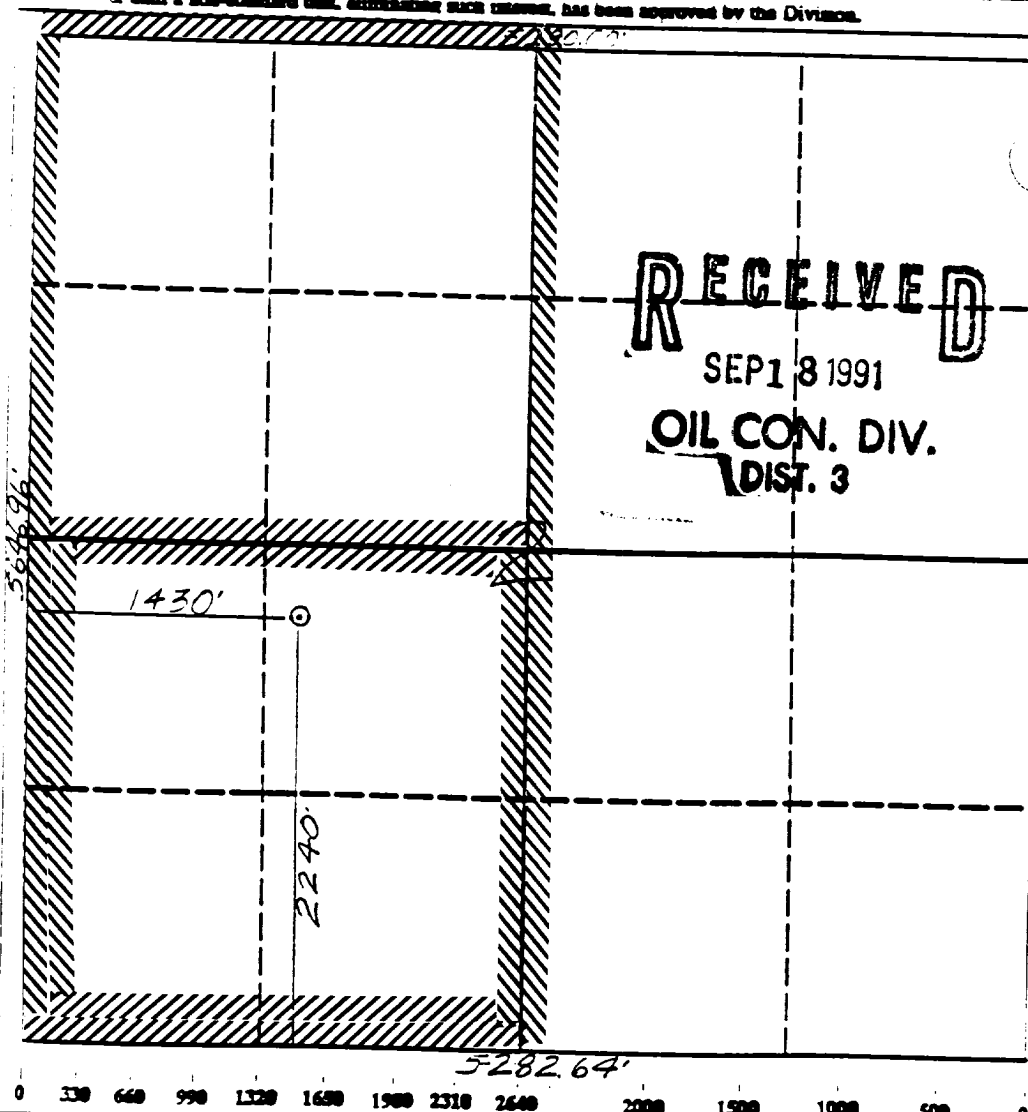
DISTRICT III
1000 Rio Brinos Rd., Aztec, NM 87410

WELL LOCATION AND ACREAGE DEDICATION PLAT

All Distances must be from the outer boundaries of the section

Operator Meridian Oil Inc.		Lease Simm's Federal (SF-079482)		Well No. 303	
Unit Letter K	Section 2	Township 30 North	Range 4 West	County Rio Arriba	
Actual Footage Location of Well: 2240' feet from the South line and 1430' feet from the West line					
Ground level Elev. 6943'		Producing Formation Fruitland Coal/Pic. Cliffs		Dedicated Acreage: 341.58	
		Basin/East Blanco			

- Outline the acreage dedicated to the subject well by concrete posts or machine marks on the plat below.
- If more than one lease is dedicated to the well, outline each and identify the ownership thereof (both as to working interest and royalty).
- If more than one lease of different ownership is dedicated to the well, have the interest of all owners been consolidated by communitization, consolidation, forced-pooling, etc.?
☐ Yes ☐ No If answer is "yes" type of consolidation communitization agreement will
If answer is "no" list the owners and tract descriptions which have actually been consolidated. (Use reverse side of this form if necessary.) obtained
No allowable will be assigned to the well until all interests have been consolidated (by communitization, unitization, forced-pooling, or otherwise) or until a non-standard unit, encompassing such interest, has been approved by the Division.



RECEIVED

SEP 18 1991

OIL CON. DIV.

DIST. 3

OPERATOR CERTIFICATE

I hereby certify that the information herein is true and correct to the best of my knowledge and belief.

Signature Peggy Bradfield

Printed Name Peggy Bradfield

Position Regulatory Affairs

Company Meridian Oil Inc

Date 9-13-91

Signature [Signature]

Printed Name [Name]

Position [Position]

Company [Company]

Date [Date]

SURVEYOR CERTIFICATE

I hereby certify that the well location on this plat was plotted from field actual surveys made by me or supervision, and that the same is correct to the best of my known belief.

8-23-90

Date Surveyed 8-23-90

Signature [Signature]

Printed Name [Name]

Position [Position]

Company [Company]

Date [Date]

Signature [Signature]

Printed Name [Name]

Position [Position]

Company [Company]

Date [Date]

Well Name: 303 SIMMS FEDERAL
 Sec. 2 T30N R04W
 BASIN FRUITLAND COAL
 EAST BLANCO PICTURED CLIFFS

2240' FSL 1430' FWL
 RIO ARRIBA NEW MEXICO
 Elevation 6943' GL

Formation tops: Surface- SAN JOSE

Ojo Alamo- 3090

Kirtland- 3330

Fruitland- 3590

Fruitland Coal Top- 3631

Fruitland Coal Base- 3706

Pictured Cliffs- 3710

LEWIS - 4165

Total Depth- 4110

Logging Program: Mud logs from 3590 to total depth.

Mud Program:	Interval	Type	Weight	Visc.	Fl. Loss
	0 - 200	Spud	8.4 - 8.9	40-50	no contro.
	200 - 4110	Non-dispersed	8.4 - 9.5	30-60	no contro.

Casing Program:	Hole Size	Depth Interval	Csg. Size	Weight	Grade
	12 1/4"	0 - 200	8 5/8"	24.0#	K-55
	7 7/8"	0 - 4110	5 1/2"	15.5#	K-55
Tubing Program:		0 - 4110	2 3/8"	4.7#	J-55

Float Equipment: 8 5/8" surface casing - saw tooth guide shoe. Centralizers will be run in accordance with Onshore Order #2.

5 1/2" production casing - guide shoe on bottom. Float valve one joint off bottom. Three centralizers run every other joint above shoe. Two turbolizin type centralizers - one below and one into the base of the Ojo Alamo @ 3330' Stage tool @ 3330'. Standard centralizers thereafter every fourth joint up to the base of the surface pipe.

Wellhead Equipment: 8 5/8" x 5 1/2" x 2 3/8" x 11" 3000 psi xmas tree assemb

Cementing:

8 5/8" surface casing - cement with 211 sacks of class "B" cement with 1/4# flocele/sack and 3% calcium chloride (248 cu ft. of slurry, 200% excess to circulate to surface). WOC 12 hours. Test casing to 600 psi for 30 minutes.

5 1/2" production casing - First stage: Lead with 70 sacks of 65/35 Class "B" pozmix with 6% gel, 2% CaCl₂, 5#/sack Gilsonite, and 1/4#/sack Flocele. Tail with 130 sacks Class "B" with 2% CaCl₂. Second Stage: Lead with 190 sacks of 65/35 Class "B" pozmix with 6% gel, 2% CaCl₂, 5#/sack Gilsonite, and 1/4#/sack Flocele. Tail with 60 sacks Class "B" with 2% CaCl₂. WOC 12 hours. If cement does not circulate to surface, a temperature log will be run after 8 hours to determine TOC. for 30 minutes.

BOP and Tests:

Surface to TD - 11" 3000 psi double gate BOP stack (Reference Figure #1 and #2). Prior to drilling out surface casing, test rams to 600 psi for 30 minutes.

Completion - 6" 3000 psi double gate BOP stack (Reference Figure #2.) Prior to completion operations, test rams to 3000 psi for 15 minutes.

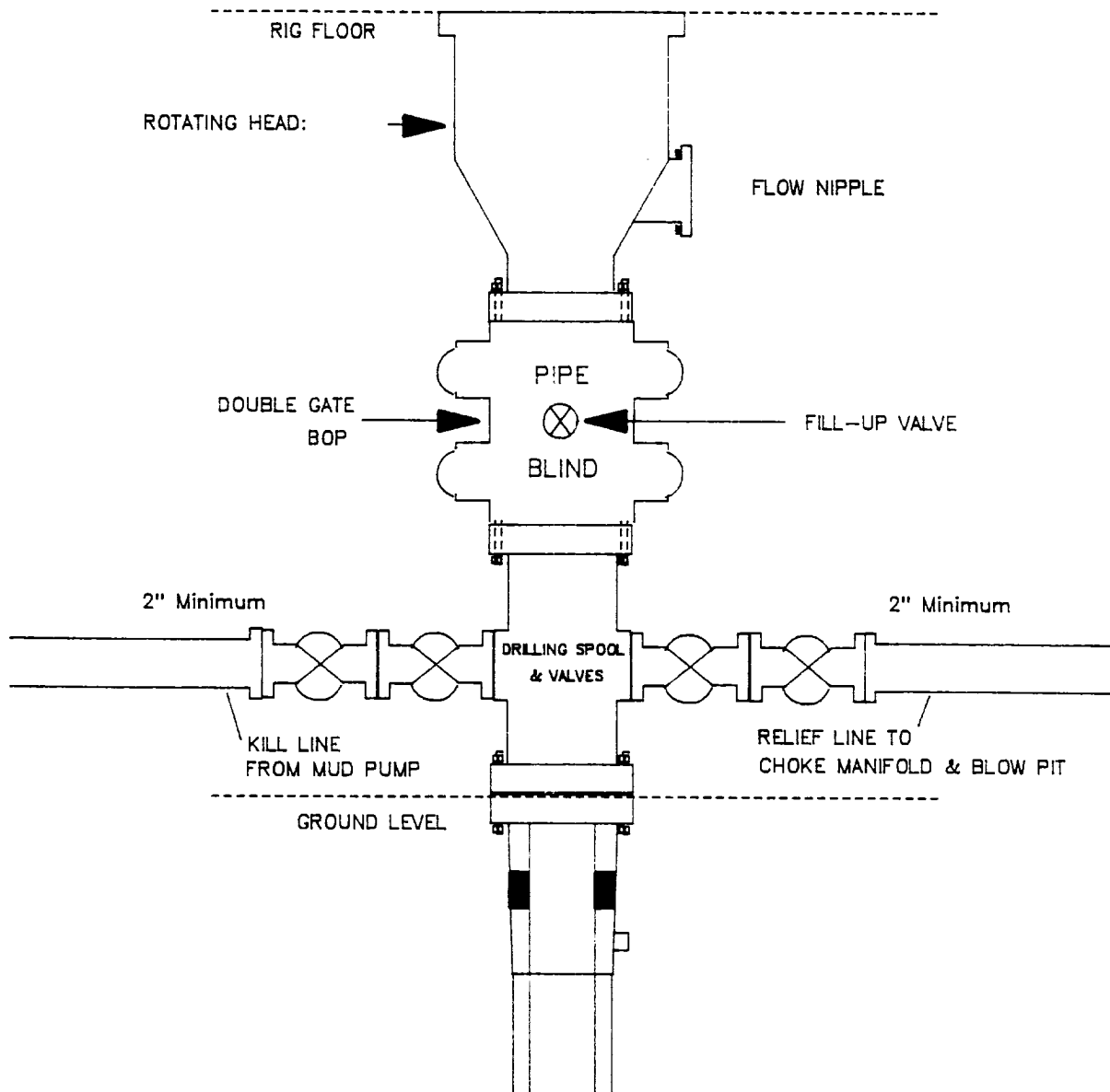
From surface to TD - choke manifold (Reference Figure #3).

Pipe rams will be actuated at least once each day and blind rams actuated once each trip to test proper functioning. An upper kelly cock valve with handle and drill string safety valves to fit each drill string will be maintained and available on the rig floor.

Additional Information:

- * The Fruitland coal formation will be completed.
- * Anticipated Fruitland pore pressure is 1600 psi.
- * This gas is dedicated.
- * The W/2 of Section 2 is dedicated to this well for the Fruitland Coal.
- * New casing will be utilized.
- * Cementing Contractor will provide the BLM with a chronological log including the pump rate and pressure, and the slurry density and volume for all cement jobs.
- * Pipe movement (either rotation or reciprocation) will be done if hole conditions permit.
- * The SW/4 of Section 2 is dedicated to this well for the Pictured Cliffs.
- * The Pictured Cliffs and Fruitland Coal will be commingled pending NMOCD approval.

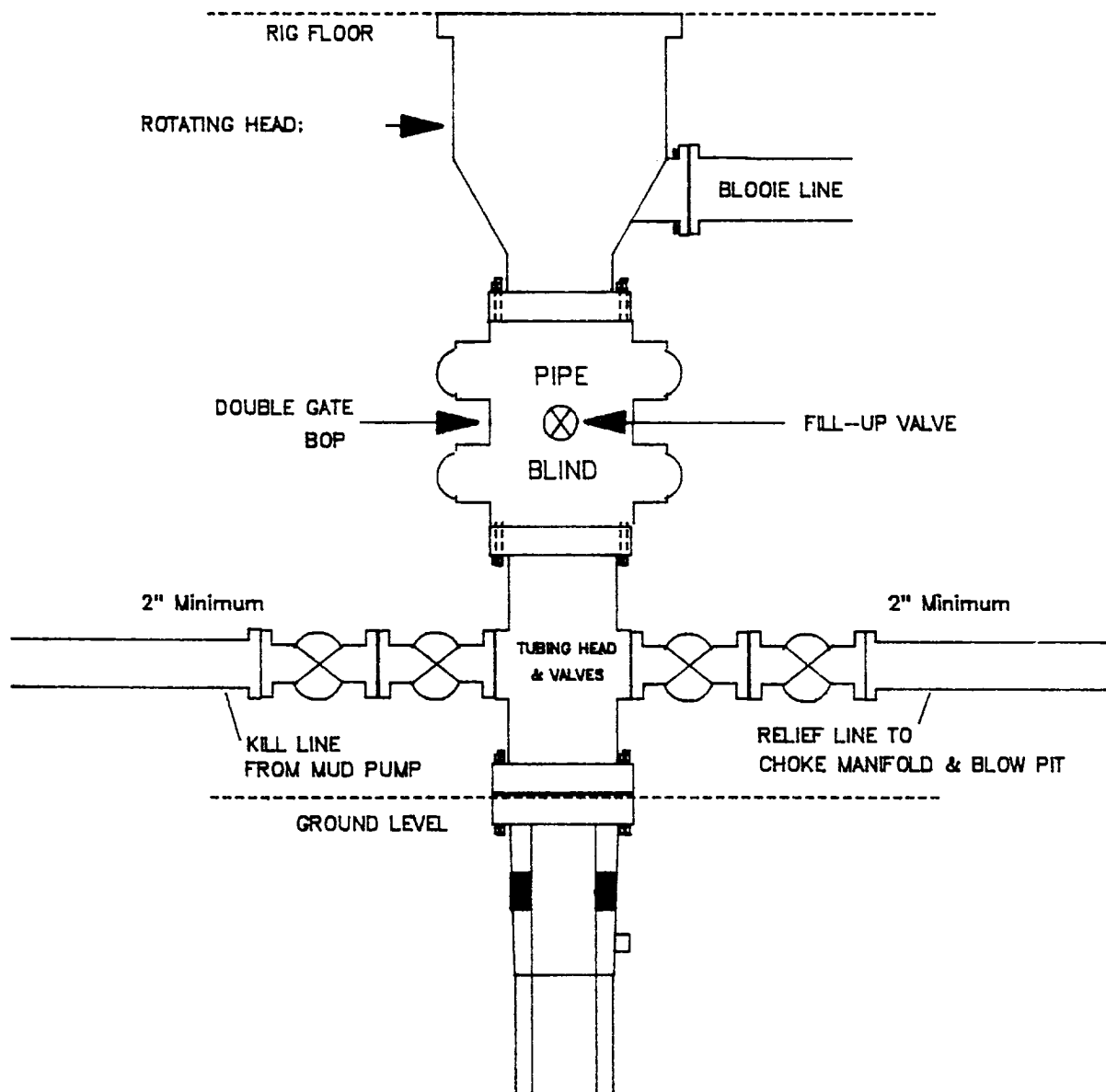
MERIDIAN OIL INC.
Drilling Rig
BOP Configuration



Minimum BOP installation for a typical Fruitland Coal well from surface to Total Depth. 11" Bore (10" Nominal), 2000psi minimum working pressure double gate BOP to be equipped with blind and pipe rams. A Schaffer Type 50 or equivalent rotating head to be installed on the top of BOP. All equipment is 2000psi working pressure/or greater.

Figure #1

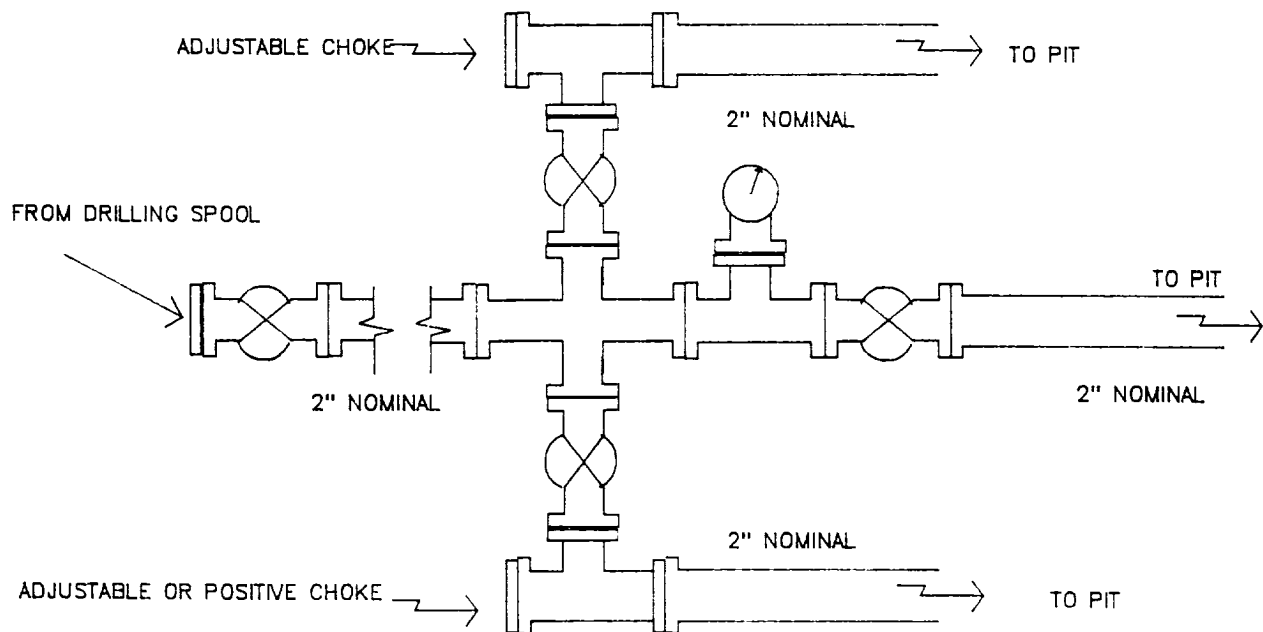
MERIDIAN OIL INC.
Completion Rig
BOP Configuration



Minimum BOP installation for Completion Operations. 7 1/16" Bore (6" Nominal), 3000psi working pressure double gate BOP to be equipped with blind and pipe rams.

Figure #2

MERIDIAN OIL INC.
Typical Fruitland Coal Well
Choke Manifold Configuration



Minimum choke manifold installation for a typical Fruitland Coal well from surface to Total Depth. 2", 2000psi working pressure equipment with two chokes.

Figure #3