

UNITED STATES
DEPARTMENT OF THE INTERIOR
BUREAU OF LAND MANAGEMENT

APPLICATION FOR PERMIT TO DRILL, DEEPEN, OR PLUG BACK

1a. TYPE OF WORK

DRILL ☒

DEEPEN ☐

PLUG BACK ☐

b. TYPE OF WELL

OIL
WELL ☐

GAS
WELL ☒

OTHER

SINGLE
ZONE ☒

MULTIPLE
ZONE ☐

2. NAME OF OPERATOR

Phillips Petroleum Company 17654

3. ADDRESS OF OPERATOR

5525 Hwy 64 NBU 3004, Farmington, NM 87401

4. LOCATION OF WELL (Report location clearly and in accordance with any State requirements.)

At surface Unit B, 996' FNL & 1473' FEL

At proposed prod. zone Same as above

5. DISTANCE IN MILES AND DIRECTION FROM NEAREST TOWN OR POST OFFICE*

Approx. 25 miles East from Blanco, NM

6. DISTANCE FROM PROPOSED*

LOCATION TO NEAREST
PROPERTY OR LEASE LINE, FT.
(Also to nearest drig. unit line, if any)

7. DISTANCE FROM PROPOSED LOCATION*

TO NEAREST WELL, DRILLING, COMPLETED,
OR APPLIED FOR, ON THIS LEASE, FT.

8. ELEVATIONS (Show whether DF, RT, GR, etc.)

6707' (GL Unprepared)

9. PROPOSED CASING AND CEMENTING PROGRAM

SIZE OF HOLE	SIZE OF CASING	WEIGHT PER FOOT	SETTING DEPTH	GENERAL REQUIREMENTS
12-1/4"	9-5/8"	36#, K-55	250'	250 Sx, Circ to Surface
8-3/4"	7"	23#, K-55	3265'	650 Sx, Circ to Surface
6-1/8"	5-1/2"	15.5#, or 23#	3165'-3425'	*

*If the coal is cleated a 5-1/2", 23#, P110 liner will be run in the open hole without being cemented.

*If the coal is not cleated a 5-1/2", 15.5#, K-55 liner will be run, cemented with 100 sx cement and the well fractured.

RECEIVED

NOV 6 1991

OIL CON. DIV.
DIST. 3

Mud Program and BOP Equipment: See Attached

ABOVE SPACE DESCRIBE PROPOSED PROGRAM: If proposal is to deepen or plug back, give data on present productive zone and proposed new productive zone. If proposal is to drill or deepen directionally, give pertinent data on subsurface locations and measured and true vertical depths. Give blowout venter program, if any.

SIGNED L. E. Robinson

TITLE Sr. Drlg. & Prod. Engr.

DATE 9-12-91

(This space for Federal or State office use)

PERMIT NO. _____

APPROVAL DATE _____

APPROVED
AS AMENDED

APPROVED BY _____

TITLE _____

DATE OCT 31 1991

CONDITIONS OF APPROVAL, IF ANY:

NMOCD

AREA MANAGER

*See Instructions On Reverse Side

Submit to Appropriate
District Office
State Lease - 4 copies
Fee Lease - 3 copies

State of New Mexico
Energy, Minerals and Natural Resources Department

Form C-102
Revised 1-1-89

OIL CONSERVATION DIVISION

P.O. Box 2088
Santa Fe, New Mexico 87504-2088

DISTRICT I
P.O. Box 1980, Hobbs, NM 88240

DISTRICT II
P.O. Drawer DD, Artesia, NM 88210

DISTRICT III
1000 Rio Brazos Rd., Aztec, NM 87410

WELL LOCATION AND ACREAGE DEDICATION PLAT

All Distances must be from the outer boundaries of the section

Operator PHILLIPS PETROLEUM			Lease SAN JUAN 30-5 UNIT		Well No. 235
Unit Letter B	Section 27	Township T.30 N.	Range R.5 W.	County RIO ARriba COUNTY	
Actual Footage Location of Well: 996 feet from the NORTH line and 1473 feet from the EAST line					
Ground level Elev. 6707	Producing Formation Fruitland		Pool Basin Fruitland Coal		Dedicated Acreage: 320 Acres

1. Outline the acreage dedicated to the subject well by colored pencil or hatchure marks on the plat below.

2. If more than one lease is dedicated to the well, outline each and identify the ownership thereof (both as to working interest and royalty).

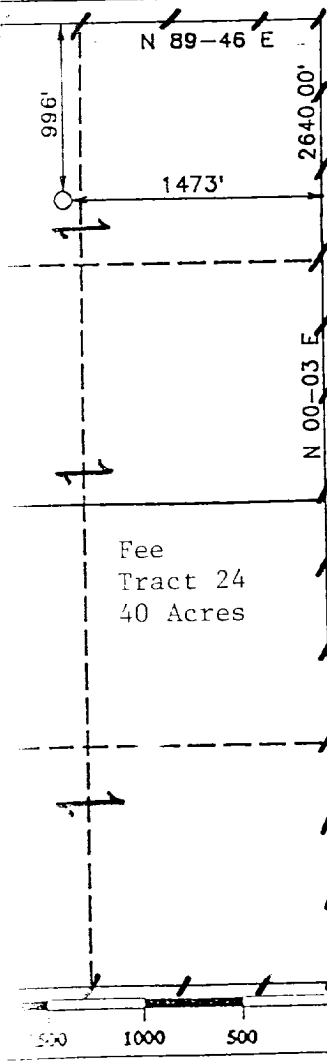
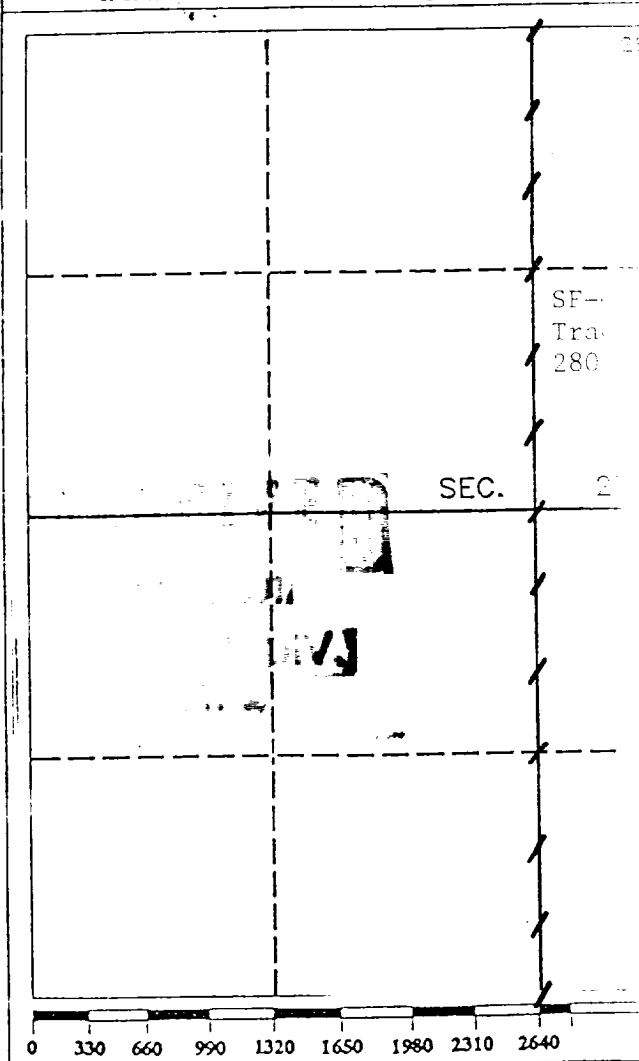
3. If more than one lease of different ownership is dedicated to the well, have the interest of all owners been consolidated by communization, unitization, force-pooling, etc.?

☒ Yes ☐ No

If answer is "yes" type of consolidation Unitization

If answer is "no" list the owners and tract descriptions which have actually been consolidated. (Use reverse side of this form if necessary).

No allowable will be assigned to the well until all interests have been consolidated (by communization, unitization, forced-pooling, or otherwise) or until a non-standard unit, eliminating such interest, has been approved by the Division.



OPERATOR CERTIFICATION

I hereby certify that the information contained herein is true and complete to the best of my knowledge and belief.

Signature

L. E. Robinson

Printed Name

L. E. Robinson

Position

Sr. Drlg. & Prod. Engr.

Company

Phillips Petroleum Co.

Date

9-12-91

SURVEYOR CERTIFICATION

I hereby certify that the well location shown on this plat was plotted from field notes of actual surveys made by me or under my supervision, and that the same is true and correct to the best of my knowledge and belief.

Date Surveyed

APRIL 10, 1991

Signature & Seal of Professional Surveyor

HENRY B. BROADHURST JR.

NEW MEXICO

REGISTERED PROFESSIONAL SURVEYOR

11392

11393

PROFESSIONAL SURVEYOR

