

UNITED STATES  
DEPARTMENT OF THE INTERIOR  
BUREAU OF LAND MANAGEMENT

30-039-25171

APPLICATION FOR PERMIT TO DRILL, DEEPEN, OR PLUG BACK

1a. TYPE OF WORK

DRILL ☒

DEEPEN ☐

PLUG BACK ☐

b. TYPE OF WELL

OIL  
WELL ☐

GAS  
WELL ☒

OTHER

SINGLE  
ZONE ☒

MULTIPLE  
ZONE ☐

2. NAME OF OPERATOR

Phillips Petroleum Company

3. ADDRESS OF OPERATOR

5525 Hwy 64 NBU 3004, Farmington, NM 87401

4. LOCATION OF WELL (Report location clearly and in accordance with any State requirements.)

At surface

Unit M, 1053' FSL & 1015' FWL

At proposed prod. zone Same as above

14. DISTANCE IN MILES AND DIRECTION FROM NEAREST TOWN OR POST OFFICE\*

Approx. 25 miles from Blanco, NM

15. DISTANCE FROM PROPOSED\*

LOCATION TO NEAREST  
PROPERTY OR LEASE LINE, FT.  
(Also to nearest drig. unit line, if any)

16. NO. OF ACRES IN LEASE

2320 Acres

17. NO. OF ACRES ASSIGNED  
TO THIS WELL

320 Acres

18. DISTANCE FROM PROPOSED LOCATION\*  
TO NEAREST WELL, DRILLING, COMPLETED,  
OR APPLIED FOR, ON THIS LEASE, FT.

19. PROPOSED DEPTH

3225'

20. ROTARY OR CABLE TOOLS

Rotary

21. ELEVATIONS (Show whether DF, RT, GR, etc.)

6458' (GL Unprepared)

This action is subject to technical and  
procedural review pursuant to 43 CFR 3165.3

22. APPROX. DATE WORK WILL START\*

Upon Approval

23. PROPOSED CASING AND CEMENTING PROGRAM

SIZE OF HOLE	SIZE OF CASING	WEIGHT PER FOOT	SETTING DEPTH	QUANTITY OF CEMENT
12-1/4	9-5/8"	36#, K-55	250'	250 Sx, Circ to Surface
8-3/4"	7"	23#, K-55	3105'	650 Sx, Circ to Surface
6-1/8"	5-1/2"	15.5# or 23#	2905'-3225'	*

\*If the coal is cleated a 5-1/2", 23#, P110 liner will be run in the open hole without being cemented.

\*If the coal is not cleated a 5-1/2", 15.5#, K-55 liner will be run, cemented with 100 sx cement and the well fractured.

RECEIVED

MAR 20 1992

OIL CON. DIV.  
DIST. 3

Mud Program and BOP Equipment: See Attached

IN ABOVE SPACE DESCRIBE PROPOSED PROGRAM: If proposal is to deepen or plug back, give data on present productive zone and proposed new productive zone. If proposal is to drill or deepen directionally, give pertinent data on subsurface locations and measured and true vertical depths. Give blowout preventer program, if any.

24.

SIGNED

L. E. Robinson

TITLE

Sr. Drlg. & Prod. Engr.

DATE

9-12-91

(This space for Federal or State office use)

APPROVED  
AS AMENDED

PERMIT NO.

APPROVAL DATE

APPROVED BY

TITLE

CONDITIONS OF APPROVAL, IF ANY:

MAR 18 1992

AREA MANAGER

THE UNIVERSITY OF CHICAGO  
LIBRARY

7131  
1960  
LIBRARY  
CHICAGO

THE UNIVERSITY OF CHICAGO  
LIBRARY

1

Submit to Appropriate  
District Office  
State Lease - 4 copies  
Fee Lease - 3 copies

State of New Mexico  
Energy, Minerals and Natural Resources Department

Form C-102  
Revised 1-1-89

OIL CONSERVATION DIVISION

P.O. Box 2088  
Santa Fe, New Mexico 87504-2088

DISTRICT I  
P.O. Box 1980, Hobbs, NM 88240

DISTRICT II  
P.O. Drawer DD, Artesia, NM 88210

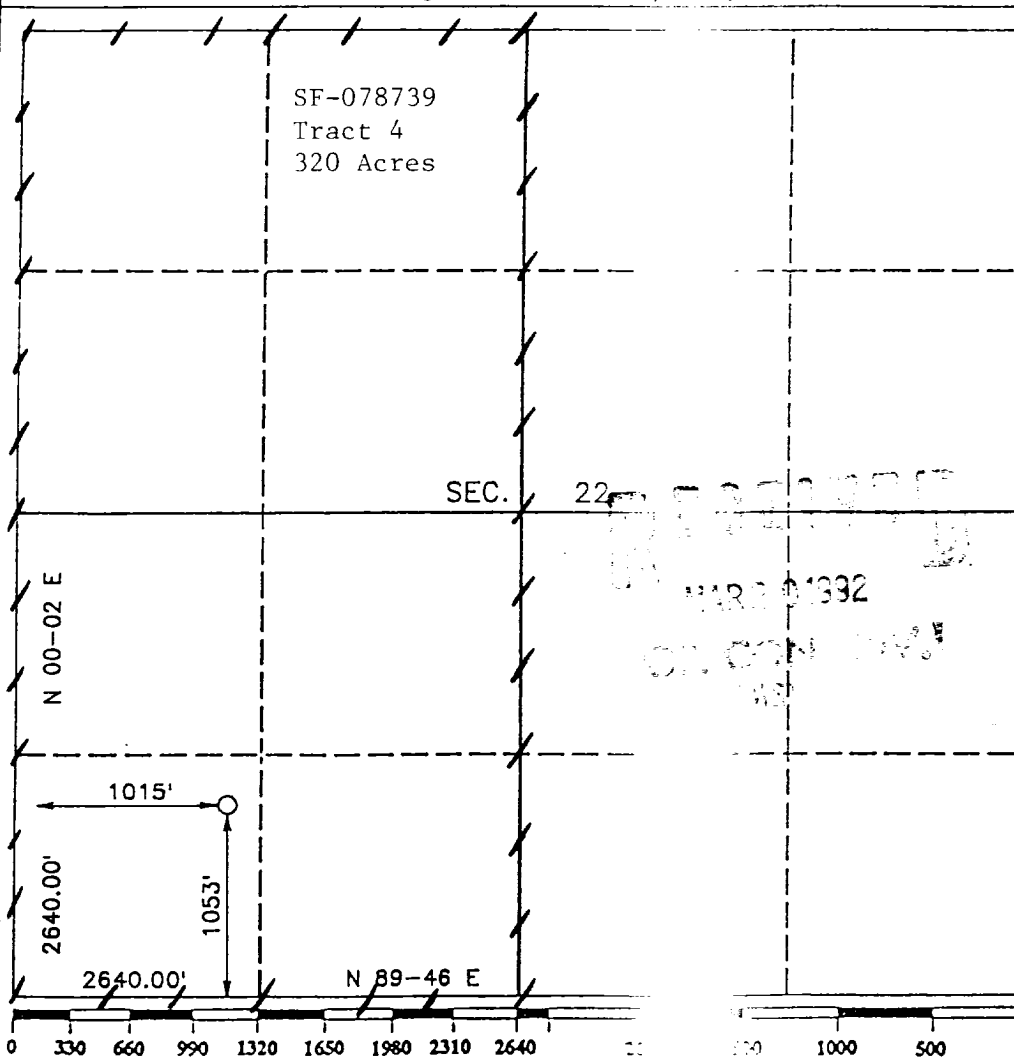
DISTRICT III  
1000 Rio Brazos Rd., Aztec, NM 87410

WELL LOCATION AND ACREAGE DEDICATION PLAT

All Distances must be from the outer boundaries of the section

Operator PHILLIPS PETROLEUM			Lease SAN JUAN 30-5 UNIT			Well No. 234		
Unit Letter M	Section 22	Township T.30 N.	Range R.5 W.	County NMPM		RIO ARRIBA COUNTY		
Actual Footage Location of Well: 1053 feet from the SOUTH line and 1015 feet from the WEST line								
Ground level Elev. 6458		Producing Formation Fruitland			Pool Basin Fruitland Coal		Dedicated Acreage: 320 Acres	

- Outline the acreage dedicated to the subject well by colored pencil or hatchure marks on the plat below.
- If more than one lease is dedicated to the well, outline each and identify the ownership thereof (both as to working interest and royalty).
- If more than one lease of different ownership is dedicated to the well, have the interest of all owners been consolidated by communitization, unitization, force-pooling, etc?  
☒ Yes ☐ No If answer is "yes" type of consolidation Unitization  
If answer is "no" list the owners and tract descriptions which have actually been consolidated. (Use reverse side of this form if necessary.)  
No allowable will be assigned to the well until all interests have been consolidated (by communitization, unitization, forced-pooling, or otherwise) or until a non-standard unit, eliminating such interest, has been approved by the Division.



OPERATOR CERTIFICATION

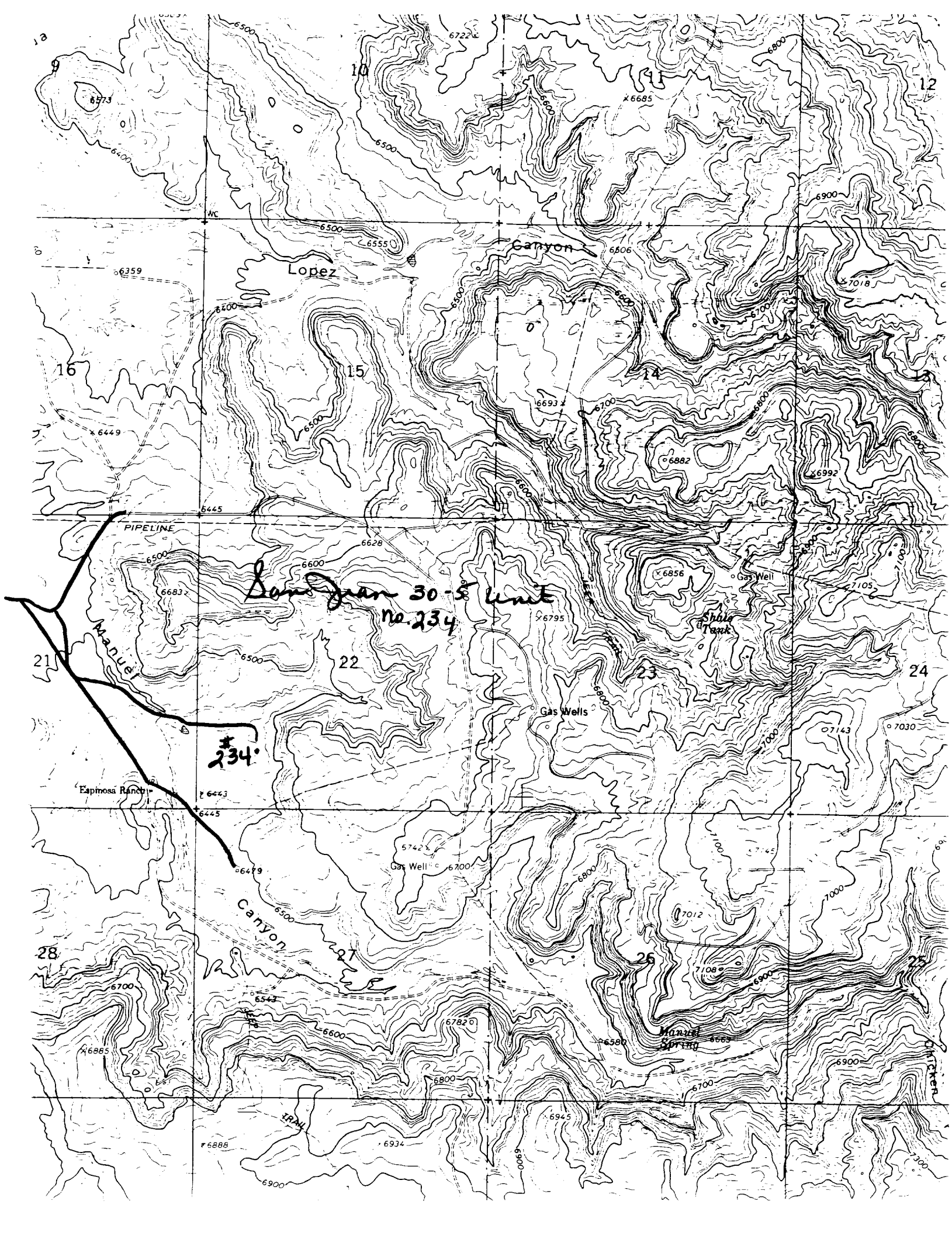
I hereby certify that the information contained herein is true and complete to the best of my knowledge and belief.

Signature  
*L. E. Robinson*  
Printed Name  
L. E. Robinson  
Position  
Sr. Drlg. & Prod. Engr.  
Company  
Phillips Petroleum Co.  
Date  
9-12-91

SURVEYOR CERTIFICATION

I hereby certify that the well location shown on this plat was plotted from field notes of actual surveys made by me or under my supervision, and that the same is true and correct to the best of my knowledge and belief.

Date Surveyed  
APRIL 10, 1991  
Signature & Seal of  
Professional Surveyor  
HENRY P. BROADHURST, JR.  
NEW MEXICO  
11393  
PROFESSIONAL SURVEYOR



*San Juan 30-S Unit  
No. 234*

*#234*

PIPELINE

Lopez

Canyon

Shale Tank

Gas Wells

Espinosa Ranch

Manuel  
Canyon

Manuel  
Spring

Chicken  
Creek