

UNITED STATES
DEPARTMENT OF THE INTERIOR
BUREAU OF LAND MANAGEMENT

30-039-25195

APPLICATION FOR PERMIT TO DRILL, DEEPEN, OR PLUG BACK

1a. TYPE OF WORK

DRILL ☒

DEEPEN ☐

PLUG BACK ☐

b. TYPE OF WELL

OIL
WELL ☐

GAS
WELL ☒

OTHER

SINGLE
ZONE ☐

MULTIPLE
ZONE ☐

2. NAME OF OPERATOR

Phillips Petroleum Company

3. ADDRESS OF OPERATOR

5525 Hwy 64 NBU 3004, Farmington, NM 87401

4. LOCATION OF WELL (Report location clearly and in accordance with any State requirements.)*

At surface

Unit K, 1804' FSL & 1818' FWL

At proposed prod. zone Same as above

14. DISTANCE IN MILES AND DIRECTION FROM NEAREST TOWN OR POST OFFICE*

Approximately 30 miles east from Blanco

16. DISTANCE FROM PROPOSED*

LOCATION TO NEAREST
PROPERTY OR LEASE LINE, FT.
(Also to nearest drlg. unit line, if any)

2320'

18. DISTANCE FROM PROPOSED LOCATION*

TO NEAREST WELL, DRILLING, COMPLETED,
OR APPLIED FOR, ON THIS LEASE, FT.

19. PROPOSED DEPTH

3165'

17. NO. OF ACRES ASSIGNED
TO THIS WELL

320 W/2

20. ROTARY OR CABLE TOOLS

Rotary

21. ELEVATIONS (Show whether DF, RT, GR, etc.)

6315' (GL Unprepared)

This action is subject to technical and
procedural review pursuant to 43 CFR 3105.2
and approval pursuant to 43 CFR 3105.4

22. APPROX. DATE WORK WILL START*

Upon Approval

23. PROPOSED CASING AND CEMENTING PROGRAM

DRILLING OPERATIONS AUTHORIZED ARE
SUBJECT TO COMPLIANCE WITH ATTACHED

SIZE OF HOLE	SIZE OF CASING	WEIGHT PER FOOT	SETTING DEPTH	QUANTITY OF CEMENT
12-1/4"	9-5/8"	36#, K-55	250'	250 Sx, Circ to Surface
8-3/4"	7"	23#, K-55	2995'	650 Sx, Circ to Surface
6-1/8"	5-1/2"	23#	2895'-3165'	*

*If the coal is cleated a 5-1/2", 23#, P-110 liner will be run in the open hole without being cemented.

RECEIVED
JUL 02 1992
OIL CON. DIV.
DIST. 3

Mud Program and BOP Equipment: See Attached

IN ABOVE SPACE DESCRIBE PROPOSED PROGRAM: If proposal is to deepen or plug back, give data on present productive zone and proposed new productive zone. If proposal is to drill or deepen directionally, give pertinent data on subsurface locations and measured and true vertical depths. Give blowout preventer program, if any.

24.

SIGNED

L. E. Robinson

TITLE

Sr. Drlg. & Prod. Engr.

DATE

5-27-92

(This space for Federal or State office use)

PERMIT NO.

APPROVAL DATE

APPROVED
AS AMENDED

APPROVED BY

TITLE

CONDITIONS OF APPROVAL, IF ANY:

NMOCD

*See Instructions On Reverse Side

EA MANAGE

SECRET

NO FORN DISSEM
1.220

Submit to Appropriate
District Office
State Lease - 4 copies
Fee Lease - 3 copies

DISTRICT I
P.O. Box 1980, Hobbs, NM 88240

DISTRICT II
P.O. Drawer DD, Artesia, NM 88210

DISTRICT III
1000 Rio Brazos Rd., Aztec, NM 87410

State of New Mexico
Energy, Minerals and Natural Resources Department

OIL CONSERVATION DIVISION

P.O. Box 2088
Santa Fe, New Mexico 87504-2088

Form C-102
Revised 1-1-89

RECEIVED
SLM

02 JUL 27 AM 10:13

02 JUL 27 AM 10:13

WELL LOCATION AND ACREAGE DEDICATION PLAT

All Distances must be from the outer boundaries of the section

Operator PHILLIPS PETROLEUM		Lease SAN JUAN 30-5 UNIT		Well No. 233
Unit Letter K	Section 33	Township T.30 N.	Range R.5 W.	County RIO ARriba COUNTY
Actual Footage Location of Well: 1804 feet from the SOUTH line and 1818 feet from the WEST line				
Ground level Elev. 6315	Producing Formation Fruitland		Pool Basin Fruitland Coal	Dedicated Acreage: 320 Acres

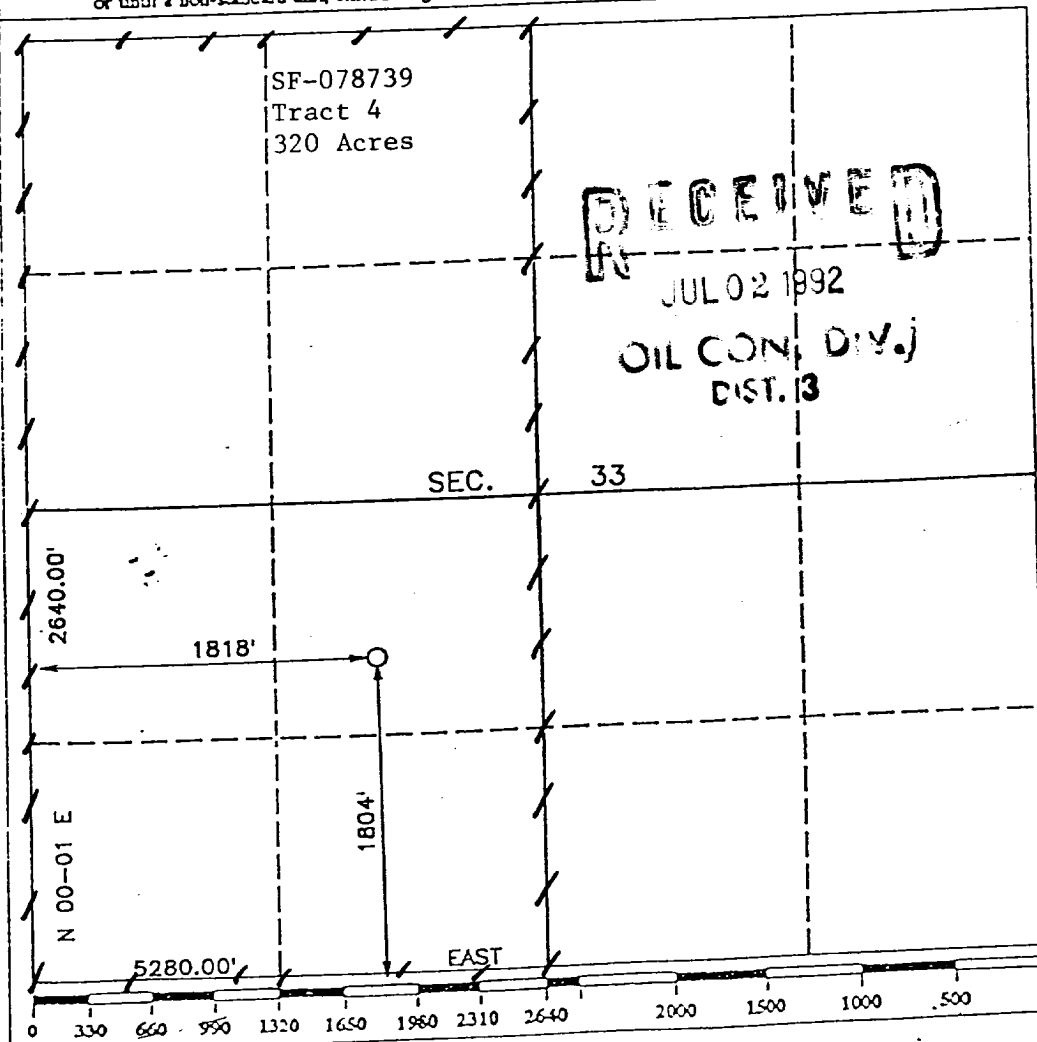
1. Outline the acreage dedicated to the subject well by colored pencil or hatchure marks on the plat below.

2. If more than one lease is dedicated to the well, outline each and identify the ownership thereof (both as to working interest and royalty).

3. If more than one lease of different ownership is dedicated to the well, have the interest of all owners been consolidated by communitization, unitization, force-pooling, etc.?

☐ Yes ☐ No If answer is "yes" type of consolidation _____
If answer is "no" list the owners and tract descriptions which have actually been consolidated. (Use reverse side of this form if necessary.)

No allowable will be assigned to the well until all interests have been consolidated (by communitization, unitization, forced-pooling, or otherwise) or until a non-standard unit, eliminating such interest, has been approved by the Division.



OPERATOR CERTIFICATION

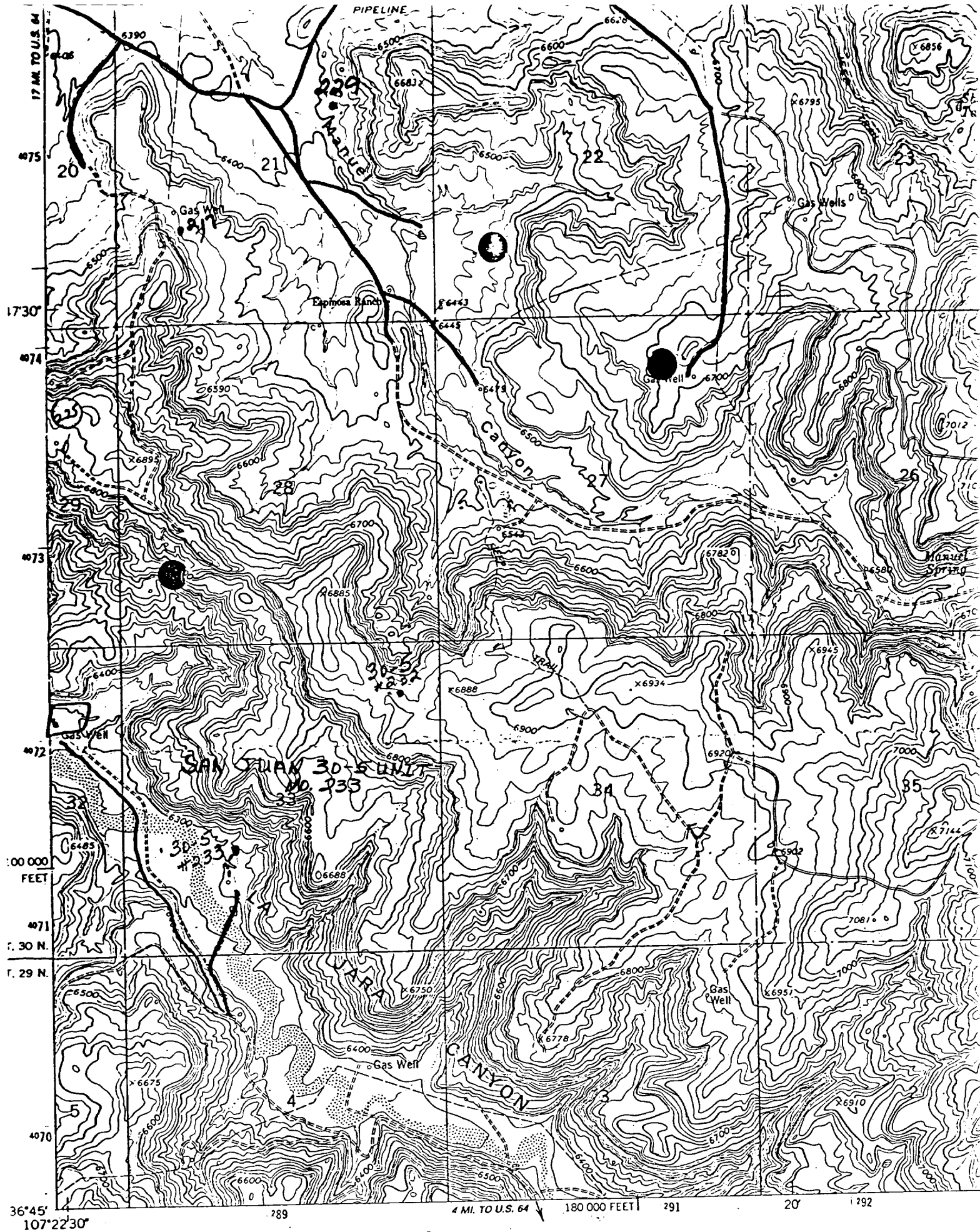
I hereby certify that the information contained herein is true and complete to the best of my knowledge and belief.

Signature
L. E. Robinson
Printed Name
L. E. Robinson
Position
Sr. Drilg. & Prod. Engr.
Company
Phillips Petroleum Company
Date
5-27-92

SURVEYOR CERTIFICATION

I hereby certify that the well location shown on this plat was plotted from field notes actual surveys made by me or under supervision, and that the same is true and correct to the best of my knowledge and belief.

Date Surveyed
JUL 20, 1992
Signature of Surveyor
B. Howard Daggett
Professional Land Surveyor
Certificate No.
Reg. 6743 Professional Land Surveyor



Mapped, edited, and published by the Geological Survey
Control by USGS and NOS/NOAA

