

UNITED STATES  
DEPARTMENT OF THE INTERIOR  
BUREAU OF LAND MANAGEMENT

30-039-25263

APPLICATION FOR PERMIT TO DRILL, DEEPEN, OR PLUG BACK

A. TYPE OF WORK  
DRILL ☒ DEEPEN ☐ PLUG BACK ☐

B. TYPE OF WELL  
OIL WELL ☐ GAS WELL ☒ OTHER ☐ SINGLE ZONE ☒ MULTIPLE ZONE ☐

C. NAME OF OPERATOR  
Phillips Petroleum Company 17654

D. ADDRESS OF OPERATOR  
5525 Hwy 64 NBU 3004, Farmington, NM 87401

E. LOCATION OF WELL (Report location clearly and in accordance with any State requirements.)\*  
At surface Unit L, 1360' FSL & 1032' FWL

At proposed prod. zone Same as above

F. DISTANCE IN MILES AND DIRECTION FROM NEAREST TOWN OR POST OFFICE\*  
30 Miles East From Blanco

G. DISTANCE FROM PROPOSED\* LOCATION TO NEAREST PROPERTY OR LEASE LINE, FT. (Also to nearest drlg. unit line, if any)  
2219.76 Acres

H. DISTANCE FROM PROPOSED LOCATION\* TO NEAREST WELL, DRILLING, COMPLETED, OR APPLIED FOR, ON THIS LEASE, FT.  
3530'

I. ELEVATIONS (Show whether DF, RT, GR, etc.)  
6793' (GL Unprepared)

5. LEASE DESIGNATION AND SERIAL NO.

SF-078738

6. IF INDIAN, ALLOTTEE OR TRIBE NAME

7. UNIT AGREEMENT NAME

San Juan 30-5 Unit 2258

8. FARM OR LEASE NAME

9. WELL NO.

241

10. FIELD AND POOL, OR WILDCAT

Basin Fruitland Coal 71629

11. SEC., T., R., M., OR BLK. AND SURVEY OR AREA

Sec. 23, T-30-N, R- 5-W

12. COUNTY OR PARISH

Rio Arriba

13. STATE

NM

17. NO. OF ACRES ASSIGNED TO THIS WELL  
320 W/2

20. ROTARY OR CABLE TOOLS  
Rotary

22. APPROX. DATE WORK WILL START\*

Upon Approval

PROPOSED CASING AND CEMENTING PROGRAM

SIZE OF HOLE	SIZE OF CASING	WEIGHT PER FOOT	SETTING DEPTH	QUANTITY OF CEMENT
12-1/4"	9-5/8"	36#, K-55	250'	250 Sx, Circ to Surface
8-3/4"	7"	23#, K-55	3430'	650 Sx, Circ to Surface
6-1/8"	5-1/2"	15.5#, or 23#	3330'-3530'	*

\*If the coal is cleated a 5-1/2", 23#, P110 liner will be run in the open hole without being cemented.

\*If the coal is not cleated a 5-1/2", 15.5#, K-55 liner will be run, cemented with 100 sx cement and the well fractured.

RECEIVED

JUL 13 1992

OIL CON. DIV.  
DIST. 3

Mud Program and BOP Equipment: See Attached

ABOVE SPACE DESCRIBE PROPOSED PROGRAM: If proposal is to deepen or plug back, give data on present productive zone and proposed new productive zone. If proposal is to drill or deepen directionally, give pertinent data on subsurface locations and measured and true vertical depths. Give blowout venter program, if any.

SIGNED L. E. Robinson TITLE Sr. Drlg. & Prod. Engr. DATE 1-10-92

(This space for Federal or State office use)

PERMIT NO. \_\_\_\_\_ APPROVAL DATE \_\_\_\_\_

APPROVED BY \_\_\_\_\_ TITLE \_\_\_\_\_ DATE \_\_\_\_\_

CONDITIONS OF APPROVAL, IF ANY:

APPROVED  
AS AMENDED

101 07 199  
AREA MANAGER

\*See Instructions On Reverse Side

Submit to Appropriate  
District Office  
State Lease - 4 copies  
Fee Lease - 3 copies

State of New Mexico  
Energy, Minerals and Natural Resources Department

Form C-102  
Revised 1-1-89

OIL CONSERVATION DIVISION

P.O. Box 2088  
Santa Fe, New Mexico 87504-2088

DISTRICT I  
P.O. Box 1980, Hobbs, NM 88240

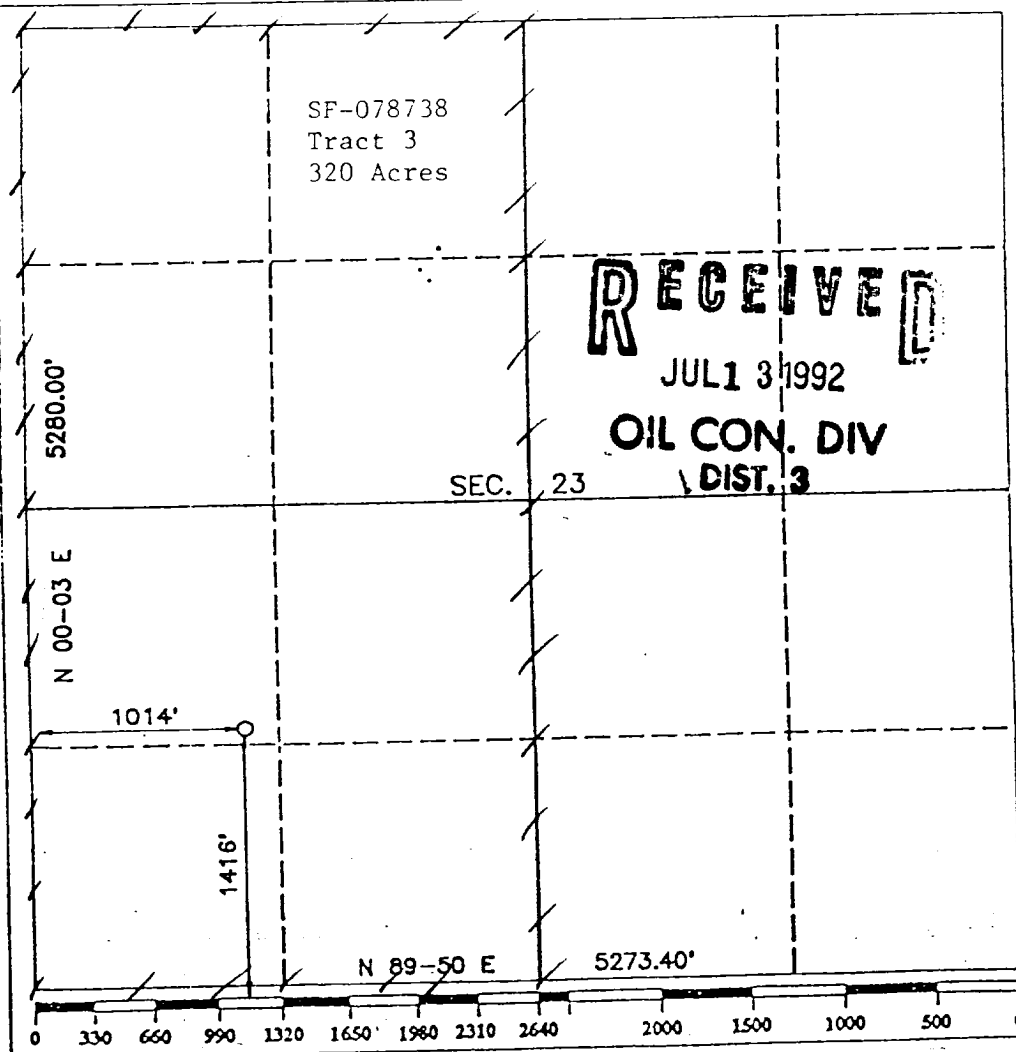
DISTRICT II  
P.O. Drawer DD, Artesia, NM 88210

DISTRICT III  
1000 Rio Brazos Rd., Aztec, NM 87410

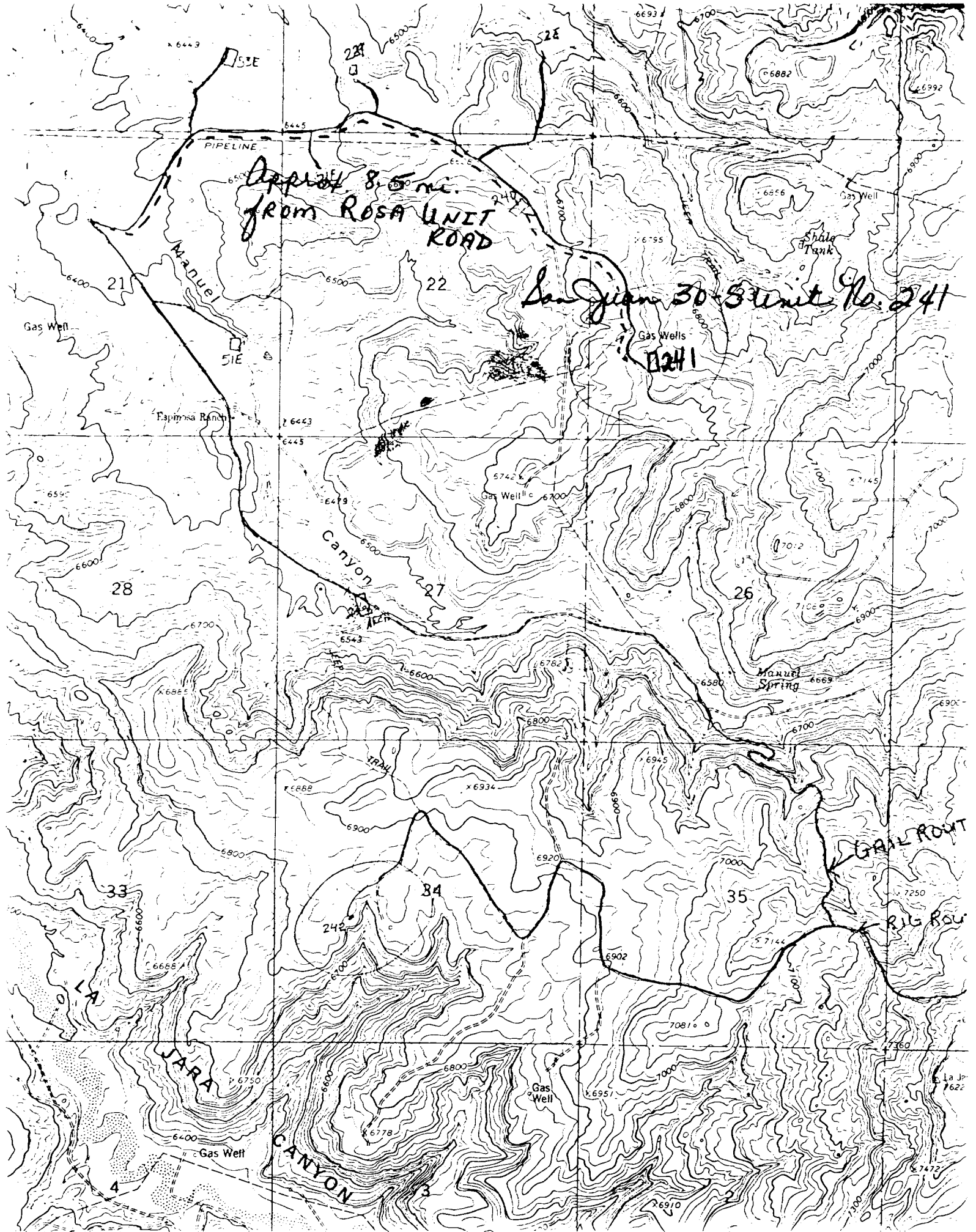
WELL LOCATION AND ACREAGE DEDICATION PLAT  
All Distances must be from the outer boundaries of the section

Operator <b>PHILLIPS PETROLEUM</b>			Lease <b>SAN JUAN 30-5 UNIT</b>		Well No. <b>241</b>
Unit Letter <b>I</b>	Section <b>23</b>	Township <b>T. 30 N.</b>	Range <b>R. 5 W.</b>	County <b>RIO ARRIBA</b>	
Actual Footage Location of Well: <b>1416</b> feet from the <b>SOUTH</b> line and <b>1014</b> feet from the <b>WEST</b> line					
Ground level Elev. <b>6793</b>		Producing Formation <b>Fruitland</b>		Pool <b>Basin Fruitland Coal</b>	Dedicated Acreage: <b>320</b> Acres

- Outline the acreage dedicated to the subject well by colored pencil or hatchure marks on the plat below.
- If more than one lease is dedicated to the well, outline each and identify the ownership thereof (both as to working interest and royalty).
- If more than one lease of different ownership is dedicated to the well, have the interest of all owners been consolidated by communitization, unitization, force-pooling, etc.?  
☒ Yes ☐ No If answer is "yes" type of consolidation Unitization  
If answer is "no" list the owners and tract descriptions which have actually been consolidated. (Use reverse side of this form if necessary.)  
No allowable will be assigned to the well until all interests have been consolidated (by communitization, unitization, forced-pooling, or otherwise) or until a non-standard unit, eliminating such interest, has been approved by the Division.



<b>OPERATOR CERTIFICATION</b> I hereby certify that the information contained herein is true and complete to the best of my knowledge and belief.	
Signature <i>L. E. Robinson</i>	Printed Name <b>L. E. Robinson</b>
Position <b>Sr. Drig. &amp; Prod. Engr.</b>	Company <b>Phillips Petroleum Company</b>
Date <b>May 14, 1992</b>	
<b>SURVEYOR CERTIFICATION</b> I hereby certify that the well location shown on this plat was plotted from field notes of actual surveys made by me or under my supervision, and that the same is true and correct to the best of my knowledge and belief.	
Date Surveyed <b>MAY 14 1992</b>	
Signature & Seal of Professional Surveyor <i>Roy A. Rush</i> <b>ROY A. RUSH</b> <b>8894</b>	
Certificate No. <b>8894</b>	



App. 8.5 mi.  
from ROSA UNIT  
ROAD

San Juan 30-3 Unit No. 241

241

GAIL ROAD

RIG ROU

JARA

CANYON