

UNITED STATES  
DEPARTMENT OF THE INTERIOR  
BUREAU OF LAND MANAGEMENT

APPLICATION FOR PERMIT TO DRILL OR DEEPEN

1A. TYPE OF WORK

DRILL ☒

DEEPEN ☐

B. TYPE OF WELL

OIL  
WELL ☐

GAS  
WELL ☒

OTHER

SINGLE  
ZONE ☒

MULTIPLE  
ZONE ☐

2. NAME OF OPERATOR

Attn: Patsy Clugston

Phillips Petroleum Company

(505) 599-3434

3. ADDRESS AND TELEPHONE NO.

5525 Hwy. 64, NBU 3004, Farmington, New Mexico 87401

4. LOCATION OF WELL (Report location clearly and in accordance with any State requirements.)\*

At surface  
Unit L, 2492' FSL & 881' FWL

Same as above

14. DISTANCE IN MILES AND DIRECTION FROM NEAREST TOWN OR POST OFFICE\*

25 Miles East of Blanco

15. DISTANCE FROM PROPOSED\*

LOCATION TO NEAREST  
PROPERTY OR LEASE LINE, FT.  
(Also to nearest drlg. unit line, if any)

16. NO. OF ACRES IN LEASE

2240 Acres

17. NO. OF ACRES ASSIGNED  
TO THIS WELL

320 W/2

18. DISTANCE FROM PROPOSED LOCATION\*  
TO NEAREST WELL, DRILLING, COMPLETED,  
OR APPLIED FOR, ON THIS LEASE, FT.

19. PROPOSED DEPTH

3225'

20. ROTARY OR CABLE TOOLS

Rotary

21. ELEVATIONS (Show whether DF, RT, GR, etc.)

6397 (GL Unprepared) procedural review pursuant to 43 CFR 3185.3

22. APPROX. DATE WORK WILL START\*

Upon approval

23.

and appeal proposed casing and cementing program SUBJECT TO COMPLIANCE WITH ATTACHED

SIZE OF HOLE	GRADE SIZE OF CASING	WEIGHT PER FOOT	SETT NG DEPTH	QUANTITY OF CEMENT
12-1/4"	9-5/8"	36#, J-55	250'	175.5 cu ft. Circ to Surface
8-3/4"	7"	23#, J-55	305.5'	1443 cu ft. Circ to Surface
6-1/8"	5-1/2"	15.5# or 23#	2955 - 3225'	*

\* If the coal is cleated a 5-1/2", 23# P110 liner will be run in the open hole without being cemented.

\* If the coal is not cleated a 5-1/2", 15.5#, K-55 liner will be run, cemented with 100 sx cement and the well fractured.

Mud Program and BOP Equipment: See Attached

RECEIVED

SEP - 3 1993

OIL CON. DIV.

DIST. 3

IN ABOVE SPACE DESCRIBE PROPOSED PROGRAM: If proposal is to deepen, give data on present productive zone and proposed new productive zone. If proposal is to drill or deepen directionally, give pertinent data on subsurface locations and measured and true vertical depths. Give blowout preventer program, if any.

24.

SIGNED

Ed Hasely

Ed Hasely

TITLE Environmental Engineer

DATE August 5, 1993

(This space for Federal or State office use)

PERMIT NO.

APPROVAL DATE

APPROVED  
AS AMENDED

Application approval does not warrant or certify that the applicant holds legal or equitable title to those rights in the subject lease which would enable the applicant to conduct operations thereon.  
CONDITIONS OF APPROVAL, IF ANY:

APPROVED BY

TITLE

\*See Instructions On Reverse Side

SEP 01 1993

DISTRICT MANAGER

Title 18 U.S.C. Section 1001, makes it a crime for any person knowingly and willfully to make to any department or agency of the United States any false, fictitious or fraudulent statements or representations as to any matter within its jurisdiction.

Submit to Appropriate  
District Office  
State Lease - 4 copies  
Fee Lease - 3 copies

DISTRICT I  
P.O. Box 1980, Hobbs, NM 88240

DISTRICT II  
P.O. Drawer DD, Artesia, NM 88210

DISTRICT III  
1000 Rio Brazos Rd., Aztec, NM 87410

State of New Mexico  
Energy, Minerals and Natural Resources Department

OIL CONSERVATION DIVISION

P.O. Box 2088  
Santa Fe, New Mexico 87504-2088

Form C-102  
Revised 1-1-89

RECEIVED  
BLM

22 AUG -5 AM 8:03

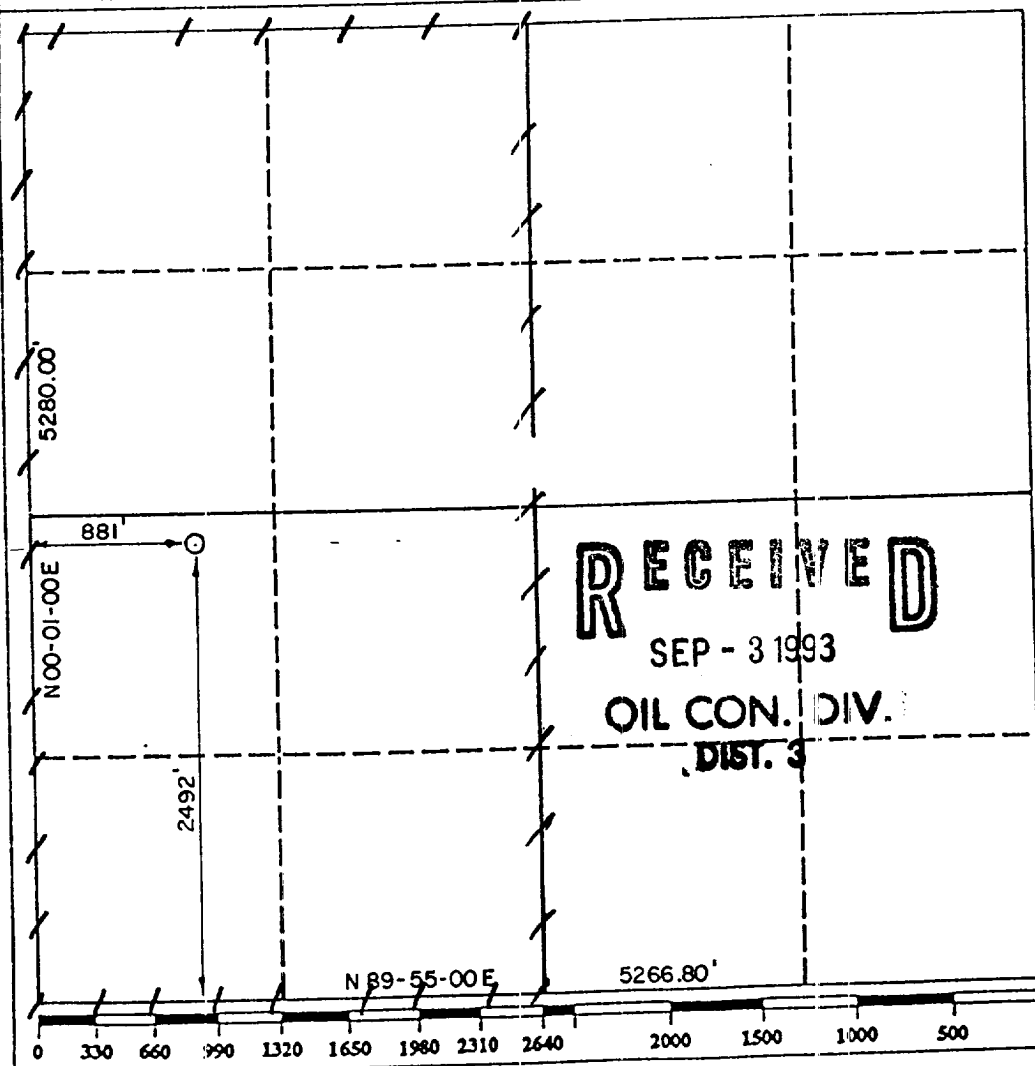
070 FARMINGTON, NM

WELL LOCATION AND ACREAGE DEDICATION PLAT

All Distances must be from the outer boundaries of the section

Operator <b>PHILLIPS PETROLEUM</b>			Lease <b>SAN JUAN 30-5 UNIT</b>		Well No. <b>216R</b>
Unit Letter <b>L</b>	Section <b>20</b>	Township <b>T.30 N.</b>	Range <b>R.5 W.</b>	County <b>RIO ARriba COUNTY</b>	
Actual Footage Location of Well: <b>2492</b> feet from the <b>SOUTH</b> line and <b>881</b> feet from the <b>WEST</b> line					
Ground level Elev. <b>6397</b>	Producing Formation <b>Fruitland Coal</b>		Pool <b>Basin Fruitland Coal Gas</b>		Dedicated Acreage: <b>320</b> Acres

1. Outline the acreage dedicated to the subject well by colored pencil or hatchure marks on the plat below.
2. If more than one lease is dedicated to the well, outline each and identify the ownership thereof (both as to working interest and royalty).
3. If more than one lease of different ownership is dedicated to the well, have the interest of all owners been consolidated by communitization, unitization, force-pooling, etc.?  
☒ Yes ☐ No If answer is "yes" type of consolidation Unitization  
If answer is "no" list the owners and tract descriptions which have actually been consolidated. (Use reverse side of this form if necessary.)  
No allowable will be assigned to the well until all interests have been consolidated (by communitization, unitization, forced-pooling, or otherwise) or until a non-standard unit, eliminating such interest, has been approved by the Division.



OPERATOR CERTIFICATION

I hereby certify that the information contained herein is true and complete to the best of my knowledge and belief.

Signature  
*Ed Hasely*  
Printed Name  
**Ed Hasely**  
Position  
**Environmental Engineer**  
Company  
**Phillips Petroleum Company**  
Date  
**August 5, 1993**

SURVEYOR CERTIFICATION

I hereby certify that the well location shown on this plat was plotted from field notes of actual surveys made by me or under my supervision, and that the same is true and correct to the best of my knowledge and belief.

Date Surveyed  
**JULY 7, 1993**  
Signature & Seal of Professional Surveyor  
**ROY A. RUSH**  
**8894**  
Certification No. **8894**  
PROFESSIONAL LAND SURVEYOR

