

Submit to Appropriate District Office  
 State Lease - 6 copies  
 Fee Lease - 5 copies

State of New Mexico  
 Energy, Minerals and Natural Resources Department

Form C-101  
 Revised 1-1-89

OIL CONSERVATION DIVISION

P.O. Box 2088  
 Santa Fe, New Mexico 87504-2088

DISTRICT I  
 P.O. Box 1980, Hobbs, NM 88240

DISTRICT II  
 P.O. Drawer DD, Artesia, NM 88210

DISTRICT III  
 1000 Rio Brazos Rd., Aztec, NM 87410

API NO. (assigned by OCD on New Wells)  
30-039-25383

5. Indicate Type of Lease  
 STATE  FEE

6. State Oil & Gas Lease No.

APPLICATION FOR PERMIT TO DRILL, DEEPEN, OR PLUG BACK

1a. Type of Work:  
 DRILL  RE-ENTER  DEEPEN  PLUG BACK

b. Type of Well:  
 OIL WELL  GAS WELL  OTHER   
 SINGLE ZONE  MULTIPLE ZONE

2. Name of Operator  
4956  
 Columbia Gas Development Corporation ✓

3. Address of Operator  
 P. O. Box 1350, Houston, TX 77251-1350

4. Well Location  
 Unit Letter D : 850 Feet From The North Line and 660 Feet From The West Line  
 Section 4 Township 31N Range 1W NMPM Rio Arriba County

7. Lease Name or Unit Name  
Martinez  
14449

8. Well No.  
A-1

9. Pool name or Wildcat  
96163  
Wildcat; CHAMA-NIOBRARA

RECEIVED  
 4 MAR 29 1994  
 OIL CON. DIV.  
 DIST. 3

10. Proposed Depth  
2500'

11. Formation  
Niobrara

12. Rotary or C.T.  
Rotary

13. Elevations (Show whether DF, RT, GR, etc.)  
6824 Gr.

14. Kind & Status Plug. Bond  
Blanket

15. Drilling Contractor  
Undecided

16. Approx. Date Work will start  
May 1, 1994

17. PROPOSED CASING AND CEMENT PROGRAM 41.08

| SIZE OF HOLE | SIZE OF CASING | WEIGHT PER FOOT | SETTING DEPTH | SACKS OF CEMENT | EST. TOP  |
|--------------|----------------|-----------------|---------------|-----------------|-----------|
| 12-1/4"      | 9-7/8"         | 36#             | 500'          | 265'            | Surface   |
| 8-3/4"       | 7-5/8"         | 26.4#           | 1640'         | 145'            | Surface   |
| 6-3/4"       | 5-1/2" liner   | 15.5#           | 2500'         | Uncemented      | TOL 1540' |

SUMMARY DRILLING PROGRAM

- 1) Drlg 12-1/4" hole to 500' through Mesa Verde. Run & cement 9-5/8" casing back to surface.
- 2) Drlg 8-3/4" hole to + 1640' to top of Niobrara. Run & cement 7-5/8" casing to surface.
- 3) Air drilling 6-3/4" hole through Niobrara. Run slotted liner. Stimulate.

A 10", 3000# BOP will be in operation for all drilling below surface casing.

IN ABOVE SPACE DESCRIBE PROPOSED PROGRAM: IF PROPOSAL IS TO DEEPEN OR PLUG BACK, GIVE DATA ON PRESENT PRODUCTIVE ZONE AND PROPOSED NEW PRODUCTIVE ZONE. GIVE BLOWOUT PREVENTER PROGRAM, IF ANY.

I hereby certify that the information above is true and complete to the best of my knowledge and belief.

SIGNATURE Wendy G. DesOrmeaux TITLE Regulatory Coordinator DATE 3/28/94

TYPE OR PRINT NAME Wendy G. DesOrmeaux (713) 871-3482 TELEPHONE NO.

(This space for State Use)

APPROVED BY Eric Bush DEPUTY OIL & GAS INSPECTOR, DIST. #3 DATE 4-12-94  
APR 12 1994

CONDITIONS OF APPROVAL, IF ANY: This Approval Expires 4-12-95 And Will Not Be Extended

Submit to Appropriate District Office  
 State Lease - 4 copies  
 Fee Lease - 3 copies

State of New Mexico  
 Energy, Minerals and Natural Resources Department

Form C-102  
 Revised 1-1-89

**OIL CONSERVATION DIVISION**  
 P.O. Box 2088  
 Santa Fe, New Mexico 87504-2088

**DISTRICT I**  
 P.O. Box 1980, Hobbs, NM 88240

**DISTRICT II**  
 P.O. Drawer DD, Artesia, NM 88210

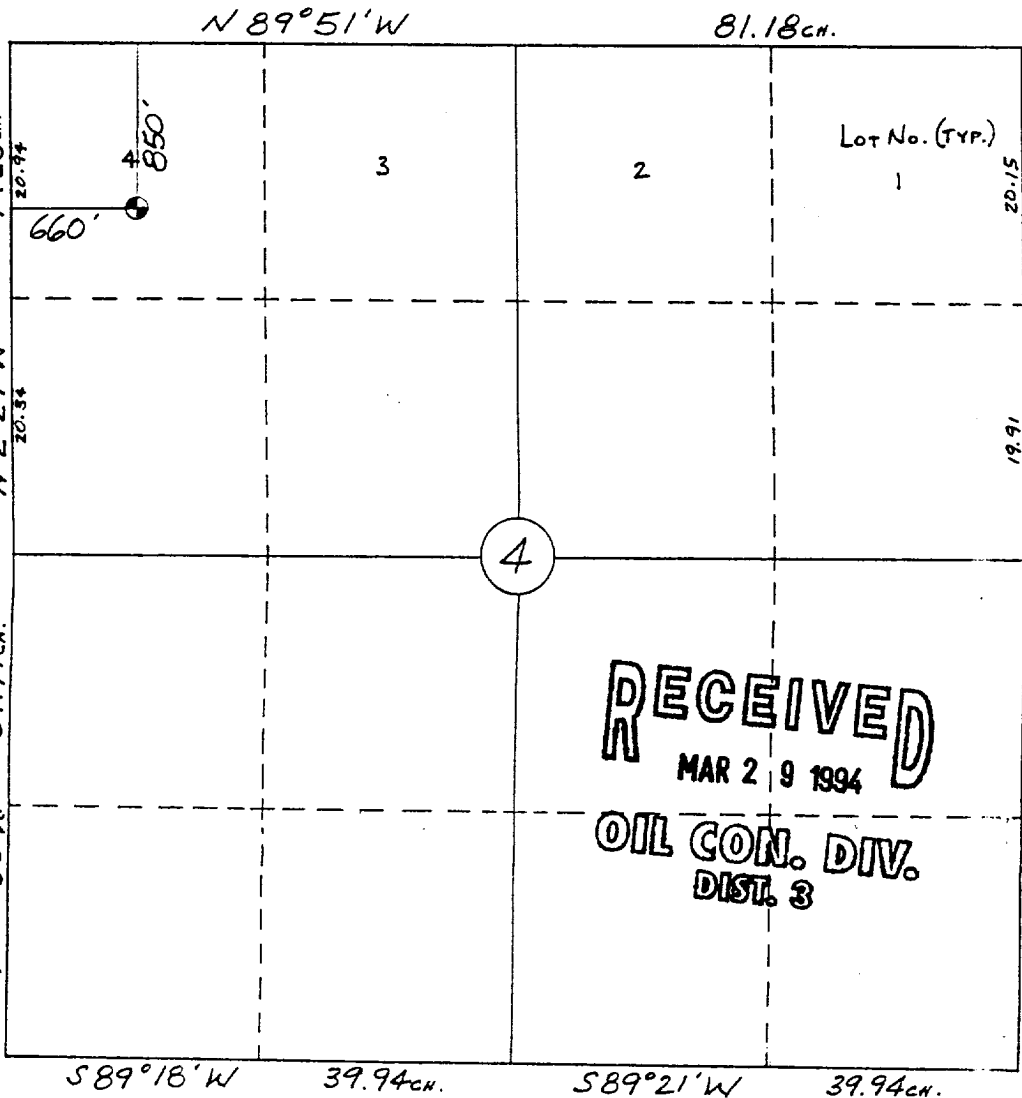
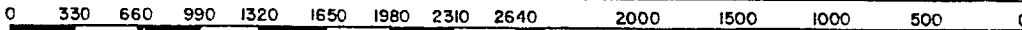
**DISTRICT III**  
 1000 Rio Brazos Rd., Aztec, NM 87410

**WELL LOCATION AND ACREAGE DEDICATION PLAT**

All Distances must be from the outer boundaries of the section

|  |  |  |  |                             |
|--|--|--|--|-----------------------------|
| Operator<br><b>COLUMBIA GAS DEVELOPMENT CORP.</b>  |  | Lease<br><b>MARTINEZ 4</b>             |  | Well No.<br><b>4-1</b>      |
| Unit Letter<br><b>D</b>  | Section<br><b>4</b>                    | Township<br><b>31 N</b>                | Range<br><b>1 W</b>                          | County<br><b>Rio Arriba</b> |
| Actual Footage Location of Well:<br><b>850</b> feet from the <b>North</b> line and <b>660</b> feet from the <b>West</b> line |  |  |  |                             |
| Ground level Elev.<br><b>6824</b>  | Producing Formation<br><b>Niobrara</b> | Pool<br><b>Wildcat; CHAMA-NIOBRARA</b> | Dedicated Acreage:<br><b>40 41/100</b> Acres |                             |

- Outline the acreage dedicated to the subject well by colored pencil or hachure marks on the plat below.
- If more than one lease is dedicated to the well, outline each and identify the ownership thereof (both as to working interest and royalty).
- If more than one lease of different ownership is dedicated to the well, have the interest of all owners been consolidated by communitization, unitization, force-pooling, etc.?  
 Yes     No    If answer is "yes" type of consolidation \_\_\_\_\_  
 If answer is "no" list the owners and tract descriptions which have actually been consolidated. (Use reverse side of this form if necessary.) \_\_\_\_\_  
 No allowable will be assigned to the well until all interests have been consolidated (by communitization, unitization, forced-pooling, or otherwise) or until a non-standard unit, eliminating such interest, has been approved by the Division.



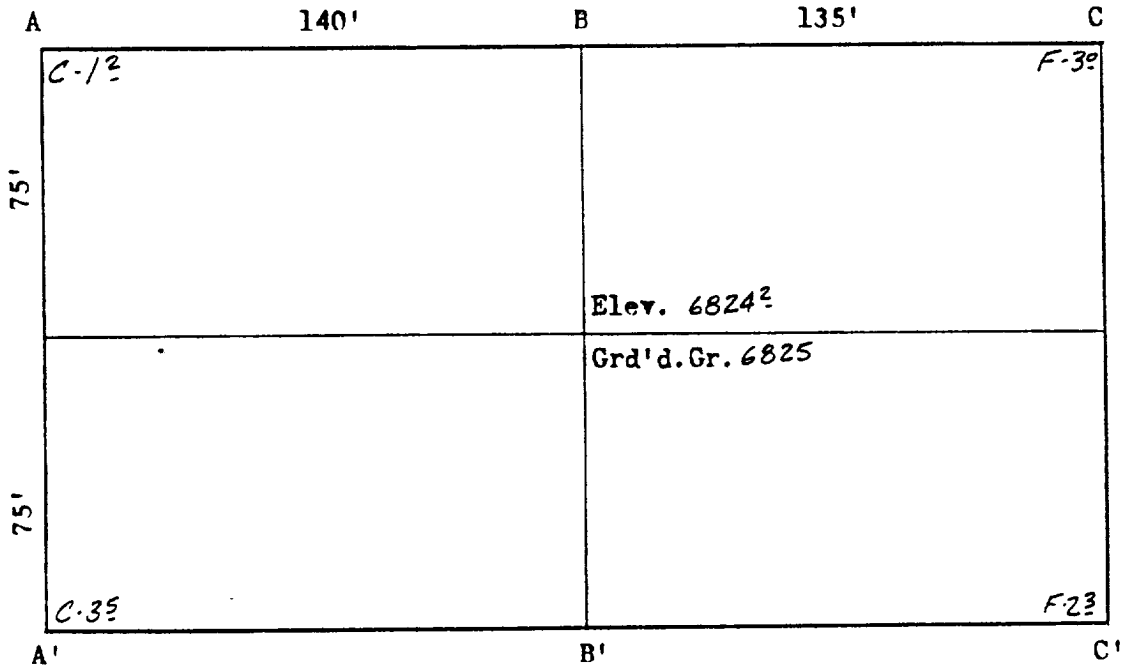
**OPERATOR CERTIFICATION**  
 I hereby certify that the information contained herein is true and complete to the best of my knowledge and belief.

Signature: *Wendy G. DesOrmeaux*  
 Printed Name: Wendy G. DesOrmeaux  
 Position: Regulatory Coordinator  
 Company: Columbia Gas Development  
 Date: 3/28/94

**SURVEYOR CERTIFICATION**  
 I hereby certify that the well location shown on this plat was plotted from field notes of actual surveys made by me or under my supervision, and that the same is true and correct to the best of my knowledge and belief.  
 7 Jan., 1994

Date Surveyed: William E. Malmke II  
 Signature & Seal of Professional Surveyor  
 #8466  
 Certificate No. 8466  
 PROFESSIONAL LAND SURVEYOR

COLUMBIA GAS DEVELOPMENT CORP.  
 MARTINEZ #4-1  
 850'FNL & 660'FWL  
 Sec.4. T31N, R1W  
 Rio Arriba Co., N.M.



X = 296159  
 Y = 2159975

LAT. 36-56-03 N  
 LONG. 106-56-51 W

Scale : 1"=50'



A-A'      Vert.: 1"=30'      Horiz.: 1"=100'      C/L

|      |       |       |       |       |       |       |
|------|-------|-------|-------|-------|-------|-------|
| 6830 | ----- | ----- | ----- | ----- | ----- | ----- |
| 6820 | ----- | ----- | ----- | ----- | ----- | ----- |
|      | ----- | ----- | ----- | ----- | ----- | ----- |

B-B'

|  |       |       |       |       |       |       |
|--|-------|-------|-------|-------|-------|-------|
|  | ----- | ----- | ----- | ----- | ----- | ----- |
|  | ----- | ----- | ----- | ----- | ----- | ----- |
|  | ----- | ----- | ----- | ----- | ----- | ----- |

C-C'

|      |       |       |       |       |       |       |
|------|-------|-------|-------|-------|-------|-------|
| 6830 | ----- | ----- | ----- | ----- | ----- | ----- |
| 6820 | ----- | ----- | ----- | ----- | ----- | ----- |
|      | ----- | ----- | ----- | ----- | ----- | ----- |

