



STATE OF NEW MEXICO  
ENERGY, MINERALS AND NATURAL RESOURCES DEPARTMENT

OIL CONSERVATION DIVISION

2040 S. PACHECO  
SANTA FE, NEW MEXICO 87505  
(505) 827-7131

June 30, 1997

RECEIVED  
JUL - 7 1997

OIL CON. DIV.  
DIST. 3

Burlington Resources Oil & Gas Company  
P.O. Box 4289  
Farmington, New Mexico 87499  
Attention: Peggy Bradfield

*Administrative Order NSL-3812*

Dear Ms. Bradfield:

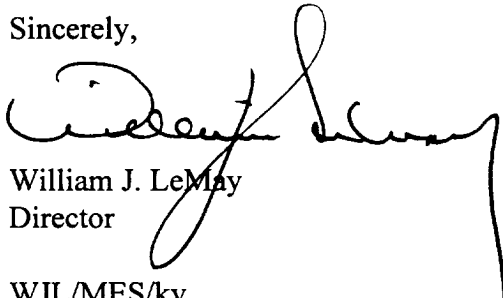
Reference is made to your application dated May 7, 1997 for an unorthodox Blanco-Mesaverde "infill" gas well location on an existing standard 320-acre gas spacing and proration unit ("GPU") for said Blanco-Mesaverde Pool, comprising the E/2 of Section 12, Township 30 North, Range 7 West, NMPM, Rio Arriba County, New Mexico. Said GPU is currently dedicated to the San Juan "30-6" Unit Well No. 67 (API No. 30-039-07890) located at a standard gas well location 1600 feet from the North line and 890 feet from the East line (Unit H) of said Section 12.

By the authority granted me under the provisions of Rule 2(d) of the *"General Rules For The Prorated Gas Pools of New Mexico/Special Rules and Regulations For The Blanco-Mesaverde Pool"*, as promulgated by Division Order No. R-8170, as amended, the following described well to be drilled at an unorthodox "infill" gas well location in the E/2 of said Section 12 is hereby approved:

**San Juan "30-6" Unit Well No. 67-A**  
**1425' FSL - 555' FEL (Unit I) - 12 - 30N - 07W**

Further, both the San Juan "30-6" Unit Well Nos. 67 and 67-A are to be dedicated to the subject GPU, further said wells and GPU will be subject to all existing rules, regulations, policies, and procedures applicable to prorated gas pools in Northwest New Mexico.

Sincerely,

  
William J. LeMay  
Director

WJL/MES/kv

cc: Oil Conservation Division - Aztec /  
U. S. Bureau of Land Management - Farmington

# BURLINGTON RESOURCES

SAN JUAN DIVISION

May 7, 1997

Sent Federal Express

Mr. William LeMay  
New Mexico Oil Conservation Division  
2040 South Pacheco  
Santa Fe, New Mexico 87505

Re: San Juan 30-6 Unit #67A  
1425'FSL, 555'FEL Section 12, T-30-N, R-7-W, Rio Arriba County, New Mexico  
API # 30-039-(not yet assigned)

Dear Mr. LeMay:

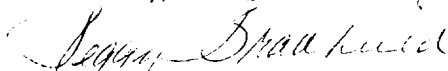
Burlington Resources is applying for administrative approval of a non-standard location for the above location in the Mesa Verde formation. This application for the referenced location is due to terrain, and the presence of archaeology.

The following attachments are for your review:

1. Application for Permit to Drill.
2. Completed C-102 at referenced location.
3. Offset operators/owners plat
4. 7.5 minute topographic map showing the orthodox windows, and enlargement of the map to define topographic features.

We appreciate your earliest consideration of this application.

Sincerely,



Peggy Bradfield  
Regulatory/Compliance Representative

xc: Bureau of Land Management

## WAIVER

\_\_\_\_\_ hereby waives objection to Burlington Resources' application for a non-standard location for their San Juan 30-6 Unit #67A as proposed above.

By: \_\_\_\_\_ Date: \_\_\_\_\_

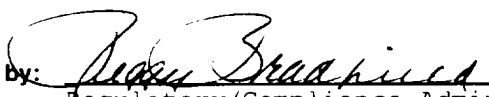
xc: Phillips Petroleum

RECEIVED  
MAY - 8 1997

OIL CON. DIV.  
DIST. 3

UNITED STATES  
DEPARTMENT OF THE INTERIOR  
BUREAU OF LAND MANAGEMENT

APPLICATION FOR PERMIT TO DRILL, DEEPEN, OR PLUG BACK

1a. Type of Work DRILL	5. Lease Number NM-012573 Unit Reporting Number 8910005380	
1b. Type of Well GAS	6. If Indian, All. or Tribe	
2. Operator <b>BURLINGTON RESOURCES</b> Oil & Gas Company	7. Unit Agreement Name San Juan 30-6 Unit	
3. Address & Phone No. of Operator PO Box 4289, Farmington, NM 87499  (505) 326-9700	8. Farm or Lease Name San Juan 30-6 Unit 9. Well Number 67A	
4. Location of Well 1425' FSL, 555' FEL  Latitude 36° 49' 27", Longitude 107° 30' 53"	10. Field, Pool, Wildcat Blanco Mesa Verde 11. Sec., Twn, Rge, Mer. (NMPM) Sec 12, T-30-N, R-7-W API # 30-039-	
14. Distance in Miles from Nearest Town 8 miles to Gobernador	12. County Rio Arriba	13. State NM
15. Distance from Proposed Location to Nearest Property or Lease Line 555'		
16. Acres in Lease	17. Acres Assigned to Well 320 E/2	
18. Distance from Proposed Location to Nearest Well, Drig, Compl, or Applied for on this Lease 2000'		
19. Proposed Depth 6076'	20. Rotary or Cable Tools Rotary	
21. Elevations (DF, FT, GR, Etc.) 6524' GR	22. Approx. Date Work will Start	
23. Proposed Casing and Cementing Program See Operations Plan attached		
24. Authorized by:  Regulatory/Compliance Administrator	1-20-97 Date	

PERMIT NO. \_\_\_\_\_ APPROVAL DATE \_\_\_\_\_

APPROVED BY \_\_\_\_\_ TITLE \_\_\_\_\_ DATE \_\_\_\_\_

Archaeological Report to be submitted  
Threatened and Endangered Species Report to be submitted  
NOTE: This format is issued in lieu of U.S. BLM Form 3160-3

District I  
PO Box 1980, Hobbs, NM 88241-1980  
District II  
PO Drawer 00, Artesia, NM 88211-0719  
District III  
1000 Rio Arriba Rd., Aztec, NM 87410  
District IV  
PO Box 2088, Santa Fe, NM 87504-2088

State of New Mexico  
Energy, Minerals & Natural Resources Department

OIL CONSERVATION DIVISION  
PO Box 2088  
Santa Fe, NM 87504-2088

Form C-102  
Revised February 21, 1994  
Instructions on back  
Submit to Appropriate District Office  
State Lease - 4 Copies  
Fee Lease - 3 Copies

☐ AMENDED REPORT

WELL LOCATION AND ACREAGE DEDICATION PLAT

API Number	Pool Code	Pool Name
30-032-	72319	Blanco Mesaverde
Property Code	Property Name	Well Number
7469	San Juan 30-6 Unit	67A
OGRID No.	Operator Name	Elevation
14538	BURLINGTON RESOURCES OIL & GAS COMPANY	6524'

<sup>10</sup> Surface Location

UL or lot no.	Section	Township	Range	Lot Ida	Feet from the	North/South line	Feet from the	East/West line	County
I	12	30-N	7-W		1425	South	555	East	R.A.

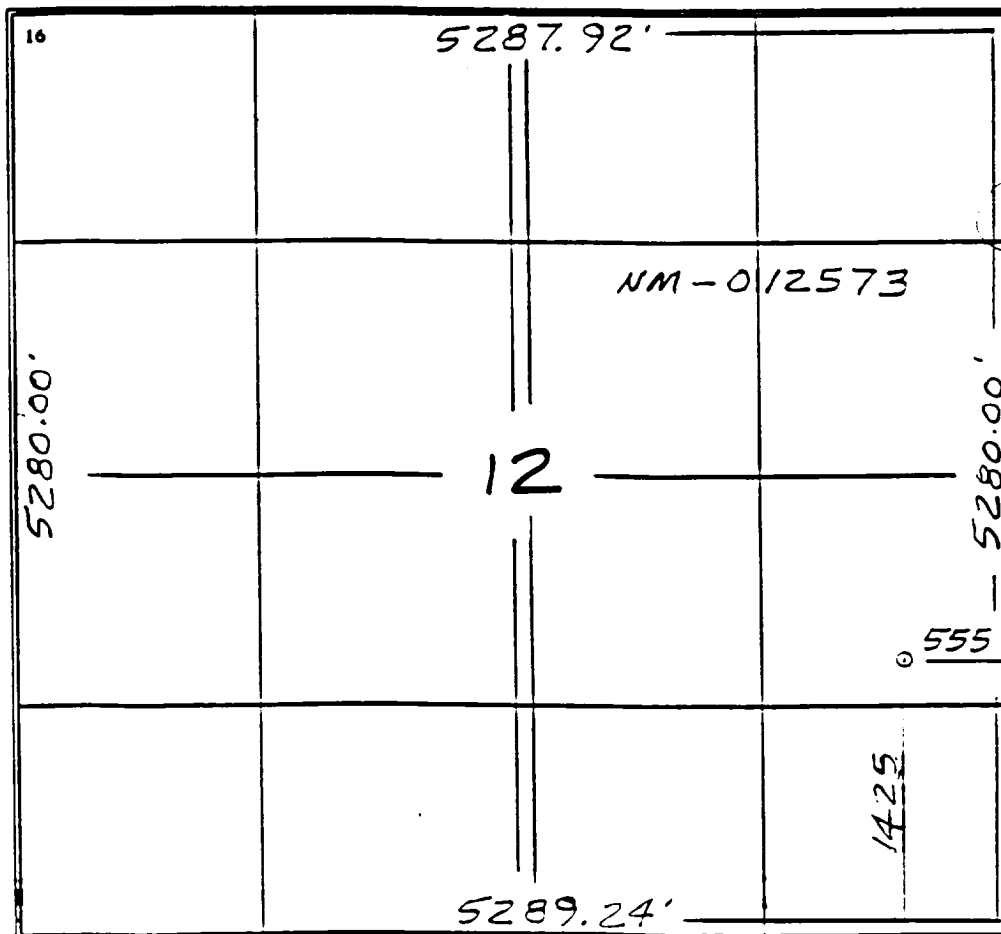
<sup>11</sup> Bottom Hole Location if Different From Surface

UL or lot no.	Section	Township	Range	Lot Ida	Feet from the	North/South line	Feet from the	East/West line	County

<sup>12</sup> Dedicated Acres <sup>13</sup> Joint or Infill <sup>14</sup> Consolidation Code <sup>15</sup> Order No.

E/320

NO ALLOWABLE WILL BE ASSIGNED TO THIS COMPLETION UNTIL ALL INTERESTS HAVE BEEN CONSOLIDATED  
OR A NON-STANDARD UNIT HAS BEEN APPROVED BY THE DIVISION



<sup>17</sup> OPERATOR CERTIFICATION

I hereby certify that the information contained herein is true and complete to the best of my knowledge and belief.

*Perry Bradfield*  
Signature  
Perry Bradfield  
Printed Name  
Regulatory Administrator  
Title  
1-20-97  
Date

<sup>18</sup> SURVEYOR CERTIFICATION

I hereby certify that the well location shown on this plat was plotted from field notes of actual surveys made by me or under my supervision, and that the same is true and correct to the best of my belief.

11/19/96  
Date of Survey  
Signature and Seal of Professional Surveyor  
NEALE C. EDWARDS  
NEW MEXICO  
6857  
6857  
Certificate Number

## OPERATIONS PLAN

**Well Name:** San Juan 30-6 Unit #67A  
**Location:** 1425' FSL, 555' FEL Section 12, T-30-N, R-7-W  
Rio Arriba County, New Mexico  
Latitude 36° 49' 27", Longitude 107° 30' 53"  
**Formation:** Blanco Mesa Verde  
**Elevation:** 6524' GL

<u>Formation Tops:</u>	<u>Top</u>	<u>Bottom</u>	<u>Contents</u>
Surface	San Jose	2486'	aquifer
Ojo Alamo	2486'	3001'	aquifer
Fruitland	3001'	3481'	gas
Pictured Cliffs	3481'	3586'	gas
Lewis	3586'	4161'	gas
<b>Intermediate TD</b>	<b>3636'</b>		
Mesa Verde	4161'	4546'	gas
Chacra	4546'	5326'	
Massive Cliff House	5326'	5316'	gas
Menefee	5416'	5676'	gas
Point Lookout	5676'		gas
<b>Total Depth</b>	<b>6076'</b>		

### Logging Program:

Cased hole logging - Gamma Ray Neutron  
Mud Logs/Coring/DST - none

### Mud Program:

<u>Interval</u>	<u>Type</u>	<u>Weight</u>	<u>Vis.</u>	<u>Fluid Loss</u>
0- 200'	Spud	8.4-9.0	40-50	no control
200-3636'	LSND	8.4-9.0	30-60	no control
3636-6076'	Gas/Mist	n/a	n/a	n/a

Pit levels will be visually monitored to detect gain or loss of fluid control.

### Casing Program (as listed, the equivalent, or better):

<u>Hole Size</u>	<u>Depth Interval</u>	<u>Csg. Size</u>	<u>Wt.</u>	<u>Grade</u>
12 1/4"	0' - 200'	9 5/8"	32.3#	H-40
8 3/4"	0' - 3636'	7"	20.0#	J-55
6 1/4"	3536' - 6076'	4 1/2"	10.5#	J-55

### Tubing Program:

0' - 6076'      2 3/8"      4.7#      J-55

### BOP Specifications, Wellhead and Tests:

Surface to Intermediate TD -

11" 2000 psi minimum double gate BOP stack (Reference Figure #1).  
After nipple-up prior to drilling out surface casing, rams and casing will be tested to 600 psi for 30 minutes.

**BOP Specifications, Wellhead and Tests (cont'd):**

**Intermediate TD to Total Depth -**

11" 2000 psi minimum double gate BOP stack (Reference Figure #1).  
After nipple-up prior to drilling out intermediate casing, rams  
and casing will be tested to 1500 psi for 30 minutes.

**Surface to Total Depth -**

2" nominal, 2000 psi minimum choke manifold (Reference Figure #3).

**Completion Operations -**

7 1/16" 2000 psi double gate BOP stack (Reference Figure #2).  
After nipple-up prior to completion, pipe rams, casing and liner  
top will be tested to 2000 psi for 15 minutes.

**Wellhead -**

9 5/8" x 7" x 2 3/8" x 2000 psi tree assembly.

**General -**

- Pipe rams will be actuated once each day and blind rams will be actuated once each trip to test proper functioning.
- An upper kelly cock valve with handle available and drill string valves to fit each drill string will be available on the rig floors at all times.
- BOP pit level drill will be conducted weekly for each drill crew.
- All BOP tests & drills will be recorded in daily drilling reports.
- Blind and pipe rams will be equipped with extension hand wheels.

**Cementing:**

9 5/8" surface casing - cement with 163 sx Class "B" cement with 1/4# flocele/sx and 3% calcium chloride (188 cu.ft. of slurry, 200% excess to circulate to surface). WOC 12 hrs. Test casing to 600 psi for 30 minutes.

Saw tooth guide shoe on bottom. Bowspring centralizers will be run in accordance with Onshore Order #2.

**7" intermediate casing -**

Lead w/341 sx Class "B" w/3% sodium metasilicate, 10# gilsonite/sx and 1/2# flocele/sx. Tail w/90 sx 50/50 Class "B" Poz w/2% calcium chloride, (1093 cu.ft. of slurry, 100% excess to circulate to surface.) WOC minimum of 12 hours before drilling out intermediate casing. If cement does not circulate to surface, a CBL will be run to determine TOC. Test casing to 1500 psi for 30 minutes.

Cement nose guide shoe on bottom with float collar spaced on top of shoe joint. Bowspring centralizers spaced every other joint off bottom, to the base of the Ojo Alamo at 3001'. Two turbolating centralizers at the base of the Ojo Alamo at 3001'. Bowspring centralizers spaced every fourth joint from the base of the Ojo Alamo to the base of the surface casing.

## 4 1/2" Production Liner -

Cement to circulate liner top. Lead with 149 sx 65/35 Class "B" poz w/6% gel, 5# gilsonite/sx and 1/4# flocele/sx. Tail with 135 sx 50/50 Class "B" Poz w/1/4# flocele/sx, 5# gilsonite/sx and 0.3% fluid loss additive (456 cu.ft., 75% excess to circulate liner top). WOC a minimum of 18 hrs prior to completing.

Cement nose guide shoe on bottom with float collar spaced on top of shoe joint. The liner hanger will have a rubber packoff.

- If hole conditions permit, an adequate water spacer will be pumped ahead of each cement job to prevent cement/ mud contamination or cement hydration.
- The pipe will be rotated and/or reciprocated, if hole conditions permit.

**Special Drilling Operations (Gas/Mist Drilling):**

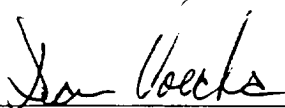
The following equipment will be operational while gas/mist drilling:

- An anchored blooie line will be utilized to discharge all cuttings and circulating medium to the blow pit a minimum of 100' from the wellhead.
- The blooie line will be equipped with an automatic igniter or pilot light.
- Compressors will be located a minimum of 100' from the wellhead in the opposite direction from the blooie line.
- Engines will have spark arresters or water cooled exhaust.
- The rotating head will be properly lubricated and maintained.
- A float valve will be utilized above the bit.
- Mud circulating equipment, water, and mud materials will be sufficient to maintain control of the well.

**Additional Information:**

- The Mesa Verde formation will be completed.
- No abnormal temperatures or hazards are anticipated.
- Anticipated pore pressures are as follows:

Fruitland Coal	800 psi
Pictured Cliffs	800 psi
Mesa Verde	700 psi
- Sufficient LCM will be added to the mud system to maintain well control, if lost circulation is encountered below the top of the Pictured Cliffs.
- The east half is dedicated to the Mesa Verde.
- This gas is dedicated.

  
Drilling Engineer

1-21-97  
Date

# *BURLINGTON RESOURCES*

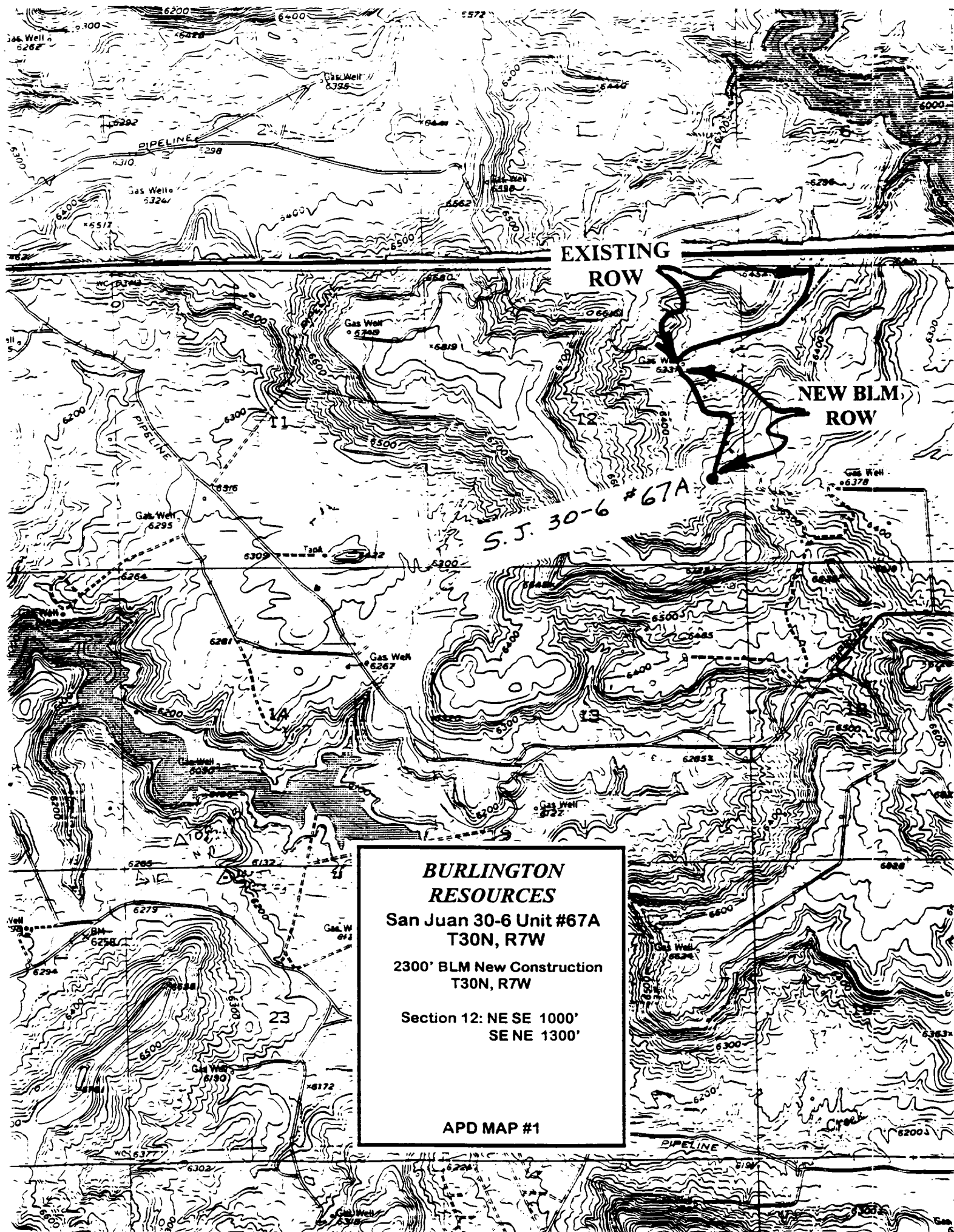
## San Juan 30-6 Unit #67A Multi-Point Surface Use Plan

1. Existing Roads - Refer to Map No. 1. Existing roads used to access the proposed location will be properly maintained for the duration of the project. Bureau of Land Management right-of-way has been applied for as shown on Map No. 1.
2. Planned Access Road - Refer to Map No. 1. The required new access road is shown on Map No. 1. The gradient, shoulder, crowning and other design elements will meet or exceed those specified by the responsible government agency. The new access road surface will not exceed twenty feet (20') in width. No additional turnarounds or turnouts will be required. Upon completion of the project, the access road will be adequately drained to control soil erosion. Approximately 2300' of access road will be constructed. Pipelines are indicated on Map No. 1A.
3. Location of Existing Wells - Refer to Map No. 1A.
4. Location of Existing and/or Proposed Facilities if Well is Productive -
  - a. On the Well Pad - Refer to Plat No. 1, anticipated production facilities plat.
  - b. Off the Well Pad - Anticipated pipeline facilities as shown on the attached plat from El Paso Field Services.
5. Location and Type of Water Supply - Water will be hauled by truck for the proposed project and will be obtained from LaJara Water Hole located SW/4 Section 11, T-30-N, R-6-W, New Mexico.
6. Source of Construction Materials - If construction materials are required for the proposed project, such materials will be obtained from a commercial quarry.
7. Methods of Handling Waste Materials - All garbage and trash materials will be removed from the site for proper disposal. A portable toilet will be provided for human waste and serviced in a proper manner. If liquids are left in the reserve pit after completion of the project, the pit will be fenced until the liquids have had adequate time to dry. The location clean-up will not take place until such time as the reserve pit can be properly covered over to prevent run-off from carrying waste materials into the watershed. Reserve pits will be lined as needed with either 12 mil bio-degradable plastic liner or a bentonite liner. All earthen pits will be so constructed as to prevent leakage from occurring; no earthen pit will be located on natural drainage. Generation of hazardous waste is not anticipated. Federal regulations will be adhered to regarding handling and disposal of such waste if so generated.
8. Ancillary Facilities - None anticipated.
9. Wellsite Layout - Refer to the location diagram and to the wellsite cut and fill diagram (Figure No. 4). The blow pit will be constructed with a 2'/160' grade to allow positive drainage to the reserve pit and prevent standing liquids in the blow pit.

10. Plans for Restoration of the Surface - After completion of the proposed project, the location will be cleaned and leveled. The location will be left in such a condition that will enable reseeding operations to be carried out. Seed mixture as designated by the responsible government agency will be used. The reseeding operations will be performed during the time period set forth by the responsible government agency. The permanent location facilities will be painted as designated by the responsible government agency.
11. Surface Ownership - Bureau of Land Management
12. Other Information - Environmental stipulations as outlined by the responsible government agency will be adhered to. Refer to the archaeological report for a description of the topography, flora, fauna, soil characteristics, dwellings, historical and cultural sites.
13. Operator's Representative and Certification - Burlington Resources Oil & Gas Company Regional Drilling Manager, Post Office Box 4289, Farmington, NM 87499, telephone (505) 326-9700. I hereby certify that I, or persons under my direct supervision, have inspected the proposed drill site and access route; that I am familiar with the conditions which presently exist; that the statements made in this plan, are to the best of my knowledge, true and correct; and that the work associated with the operations proposed herein will be performed by Burlington Resources Oil and Gas Company and its contractors and subcontractors in conformity with this plan and the terms and conditions under which it is approved.

  
(Regulatory/Compliance Administrator)

1-20-97  
Date



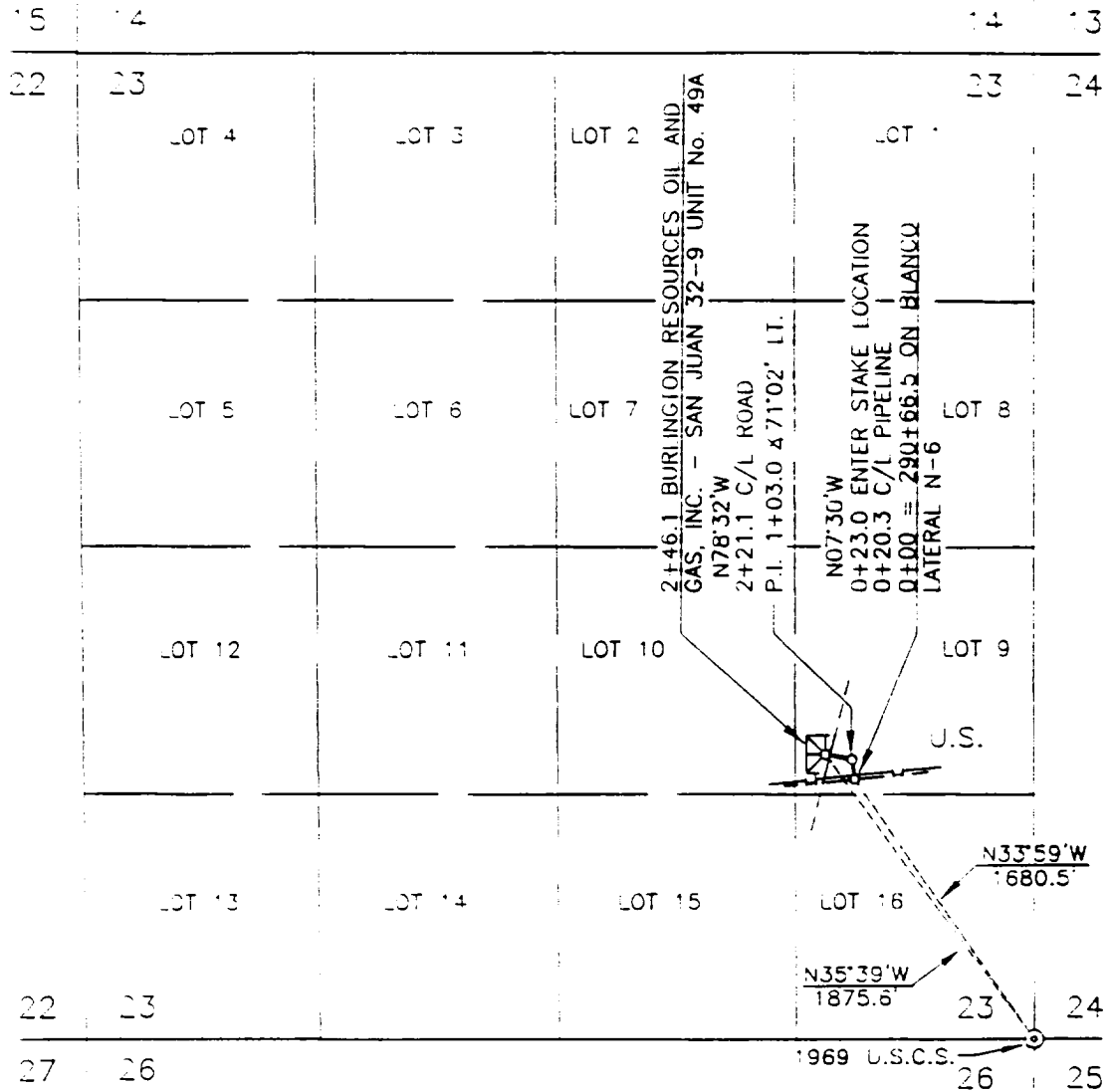
LINE **BURLINGTON RESOURCES OIL & GAS - SAN JUAN 32-9 UNIT No. 49A**

FROM **1+00 = 290+66.5 ON BLANCO - LATERAL N-6**

**(6N731.0-1, R/W 55743)**

COUNTY **SAN JUAN** STATE **NEW MEXICO** SECTION **23** TOWNSHIP **32-N**

**T-32-N, R-10-W, N.M.P.M.**  
**BASIS OF BEARING: SOLAR OBSERVATIONS**



OWN. BY **EL** CONSTR. COMMENCED \_\_\_\_\_ APPL. DWG. \_\_\_\_\_ SLACK CHAIN \_\_\_\_\_  
CKD. BY **MD** CONSTR. COMPLETED \_\_\_\_\_ DATE \_\_\_\_\_ PIPE SIZE **4 1/2" O.D.**

PRINT RECORD

PIPE DATA

METER STA. NO.

MV

NOTE: WELL FLAG

**DELMINARY**

SUBDIVISION

OWNER

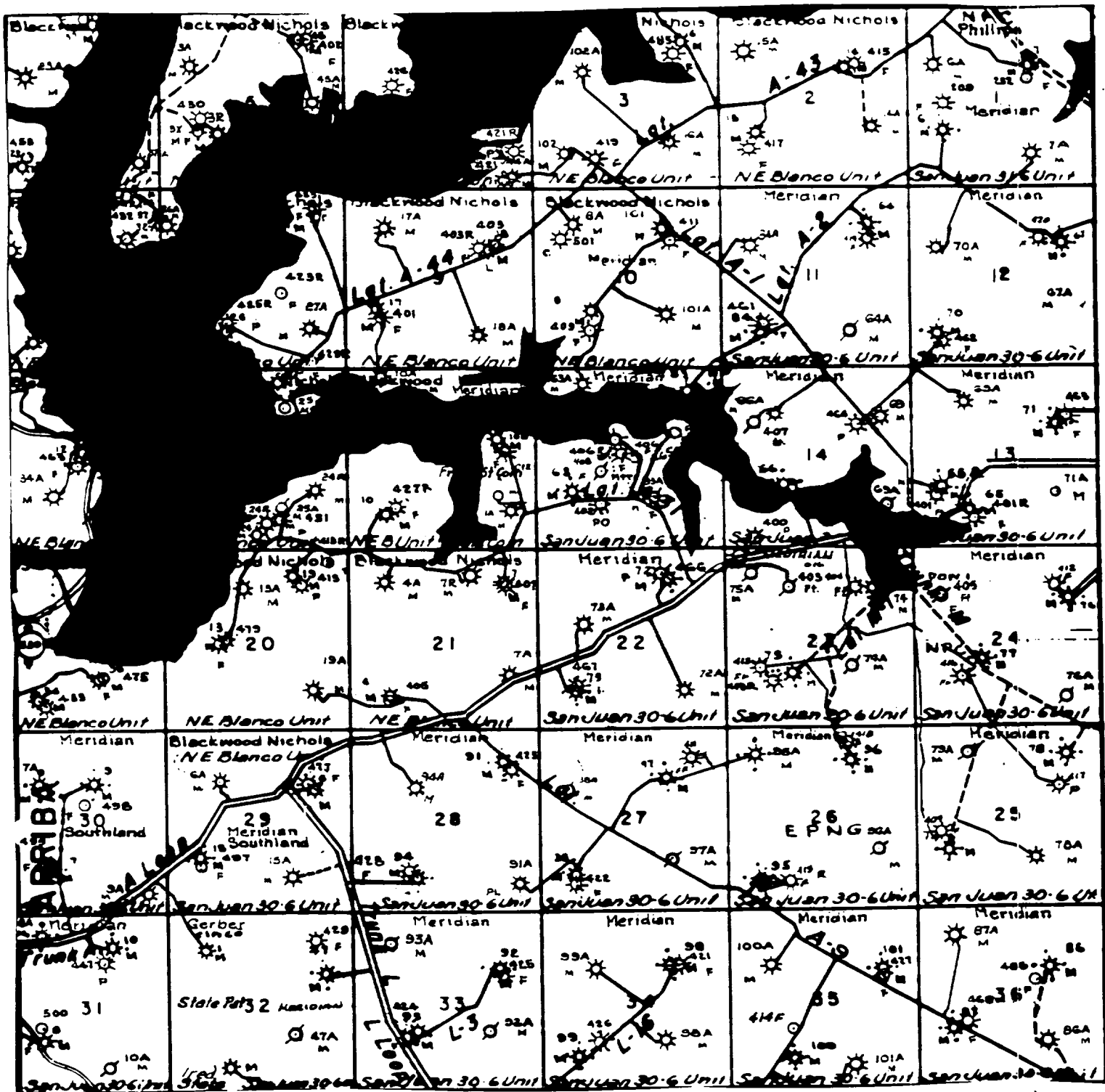
LESSEE

METER(S)

RODS

**DE/4 SEC. 23** **U.S.A.** **INN BLANCETT** **75.01** **14.915**

514020  
11-4 (REV. 6/94)

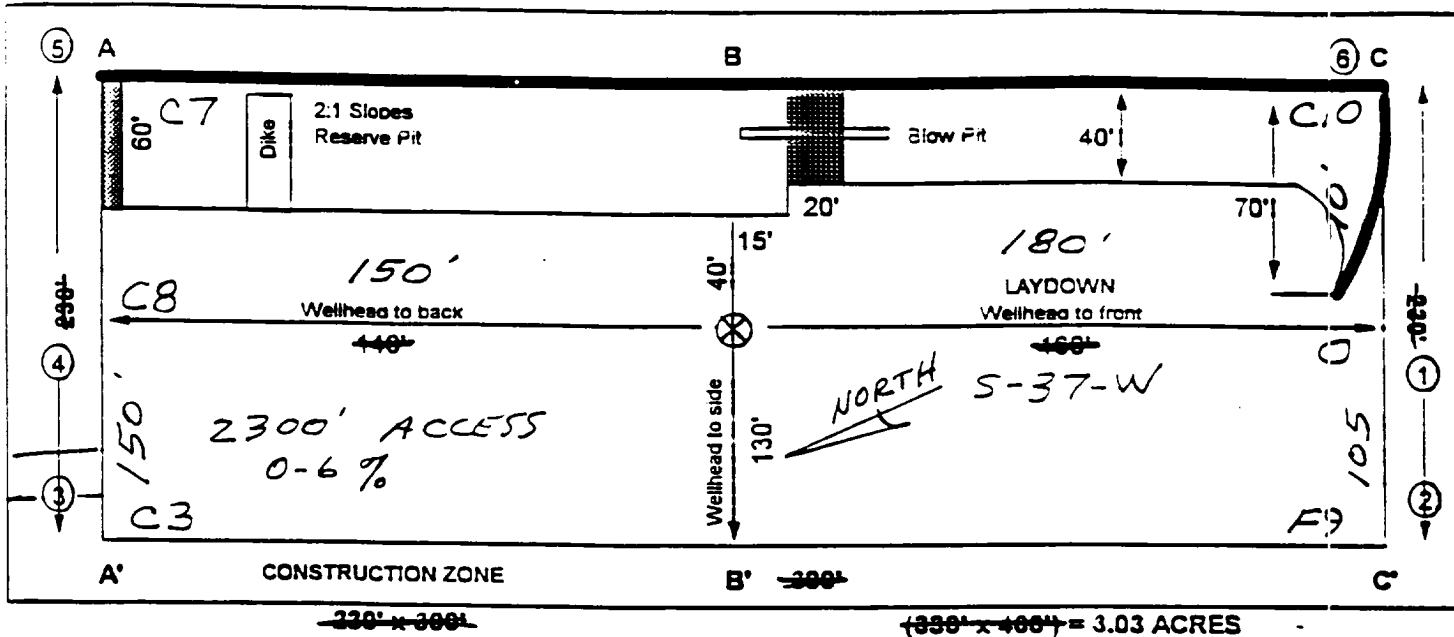


MERIDIAN OIL INC.  
 Pipeline Map  
 T-30-N, R-07-W  
 San Juan County, New Mexico  
 San Juan 30-6 Unit #67A  
 Map 1A

# BURLINGTON RESOURCES

## PLAT #1

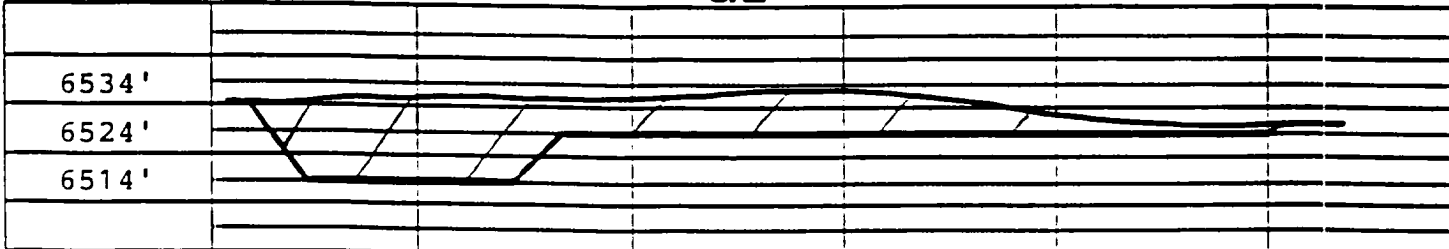
NAME: San Juan 30-6 Unit #67A  
 FOOTAGE: 1425' FSL, 555' FEL,  
 SEC 12 WN 30 NR 7 W NMPM  
 CO: Rio Arriba ST: New Mexico  
 ELEVATION: 6524' DATE: 11-19-96



Reserve Pit Dike: to be 6' above Deep side (overflow - 3' wide and 1' above shallow side).  
 Blow Pit: overflow pipe halfway between top and bottom and to extend over plastic liner and into blow pit.

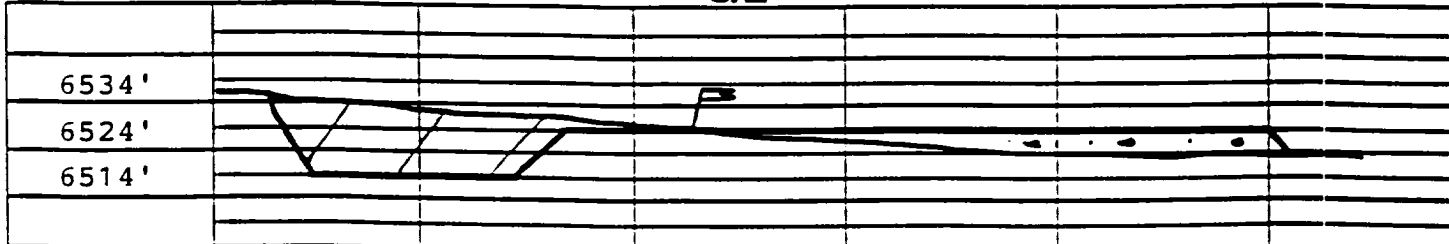
A - A'

C/L



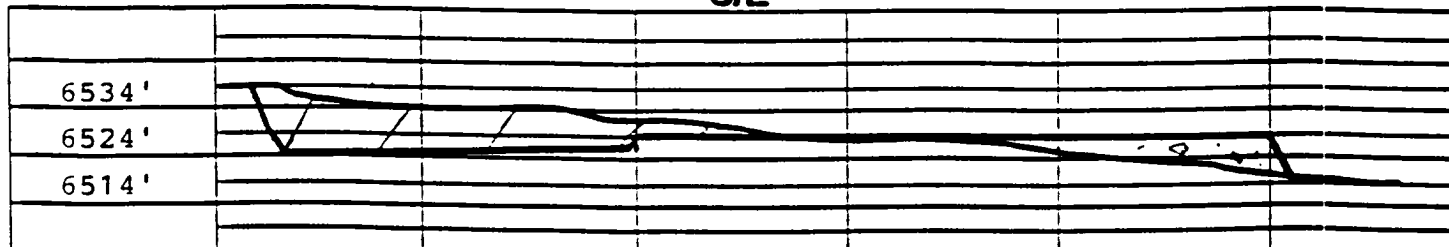
B - B'

C/L



C - C'

C/L

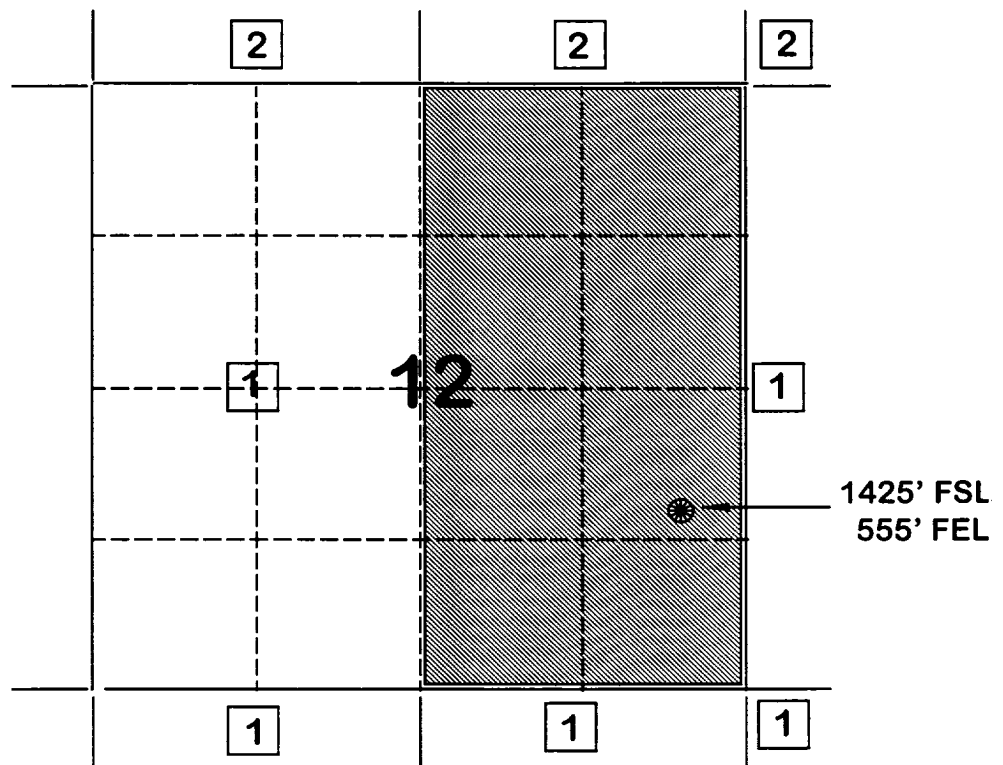


Note: Contractor should call One-Call for location of any marked or unmarked buried pipelines or cable.

***BURLINGTON RESOURCES OIL AND GAS COMPANY***

**SAN JUAN 30-6 UNIT #67A  
OFFSET OPERATOR \ OWNER PLAT  
Nonstandard Location  
Mesaverde Formation Well**

**Township 30 North, Range 7 West**

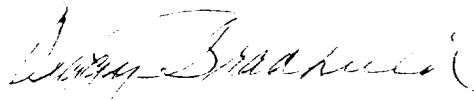


- 1) Burlington Resources Oil and Gas Company
- 2) Phillips Petroleum Company  
5525 Hwy. 64, NBU 3004  
Farmington, NM 87401

Re: San Juan 30-6 Unit #67A  
1425'FSL, 555'FEL Section 12, T-30-N, R-7-W, Rio Arriba County, New Mexico  
API # 30-039-(not yet assigned)

I hereby certify that the following offset operators/owners have been mailed notification of our application for non-standard location to drill the referenced well.

Phillips Petroleum  
5525 Highway 64, NBU 3004  
Farmington, NM 87401

A handwritten signature in black ink, appearing to read "Peggy Bradfield", with a stylized flourish at the end.

Peggy Bradfield  
Regulatory/Compliance Administrator

