

UNITED STATES
DEPARTMENT OF THE INTERIOR
BUREAU OF LAND MANAGEMENT

APPLICATION FOR PERMIT TO DRILL, DEEPEN, OR PLUG BACK

1a. Type of Work DRILL	5. Lease Number SF-080538 Unit Reporting Number
1b. Type of Well GAS	6. If Indian, All. or Tribe
2. Operator BURLINGTON RESOURCES Oil & Gas Company 14538	7. Unit Agreement Name San Juan 30-5 Unit 17260
3. Address & Phone No. of Operator PO Box 4289, Farmington, NM 87401 (505) 326-9700	8. Farm or Lease Name San Juan 30-5 Unit 9. Well Number 263
4. Location of Well 1425' FNL, 1120' FEL Latitude 36° 48' 56", Longitude 107° 18' 18"	10. Field, Pool, Wildcat Basin Ft Coal 11. Sec., Twn, Rge, Mer. (NMPM) G Sec 13, T-30-N, R-5-W API # 30-039- 25982
14. Distance in Miles from Nearest Town 60 miles to Bloomfield	12. County Rio Arriba 13. State NM
15. Distance from Proposed Location to Nearest Property or Lease Line 1120'	17. Acres Assigned to Well 217.76 E/2
16. Acres in Lease	
18. Distance from Proposed Location to Nearest Well, Drig, Compl, or Applied for on this Lease 100'	
19. Proposed Depth 3742' 3702'	20. Rotary or Cable Tools Rotary
21. Elevations (DF, FT, GR, Etc.) 6948' GR	22. Approx. Date Work will Start 7-27-98
23. Proposed Casing and Cementing Program See Operations Plan attached	DRILLING OPERATIONS AUTHORIZED ARE SUBJECT TO COMPLIANCE WITH ATTACHED "GENERAL REQUIREMENTS"
24. Authorized by: <u>[Signature]</u> Regulatory/Compliance Administrator	Date

PERMIT NO. _____ APPROVAL DATE OCT 02 1998
APPROVED BY [Signature] TITLE Reg. Engineer DATE OCT 02 1998

Archaeological Report to be submitted

Threatened and Endangered Species Report to be submitted

NOTE: This format is issued in lieu of U.S. BLM Form 3160-3

Title 18 U.S.C. Section 1001, makes it a crime for any person knowingly and willfully to make to any department or agency of the United States any false, fictitious or fraudulent statements or presentations as to any matter within its jurisdiction.

HOLD C-104 FOR NSL

Ⓢ NMOCD

District I
PO Box 1980, Hobbs NM 88241-1980
District II
PO Drawer KK, Artesia, NM 87211-0719
District III
1000 Rio Brancos Rd., Aztec, NM 87410
District IV
PO Box 2088, Santa Fe, NM 87504-2088

State of New Mexico
Energy, Minerals & Natural Resources Department

OIL CONSERVATION DIVISION
PO Box 2088
Santa Fe, NM 87504-2088

Form C-102
Revised February 21, 1994
Instructions on back
Submit to Appropriate District Office
State Lease - 4 Copies
Fee Lease - 3 Copies

☐ AMENDED REPORT

WELL LOCATION AND ACREAGE DEDICATION PLAT

API Number 30-039-25982	Pool Code 71629	Field Name Basin Fruitland Coal
Property Code 17260	Property Name SAN JUAN 30-5 UNIT	Well Number # 263
OGED No. 14538	Operator Name BURLINGTON RESOURCES OIL & GAS COMPANY	Elevation 6948

Surface Location

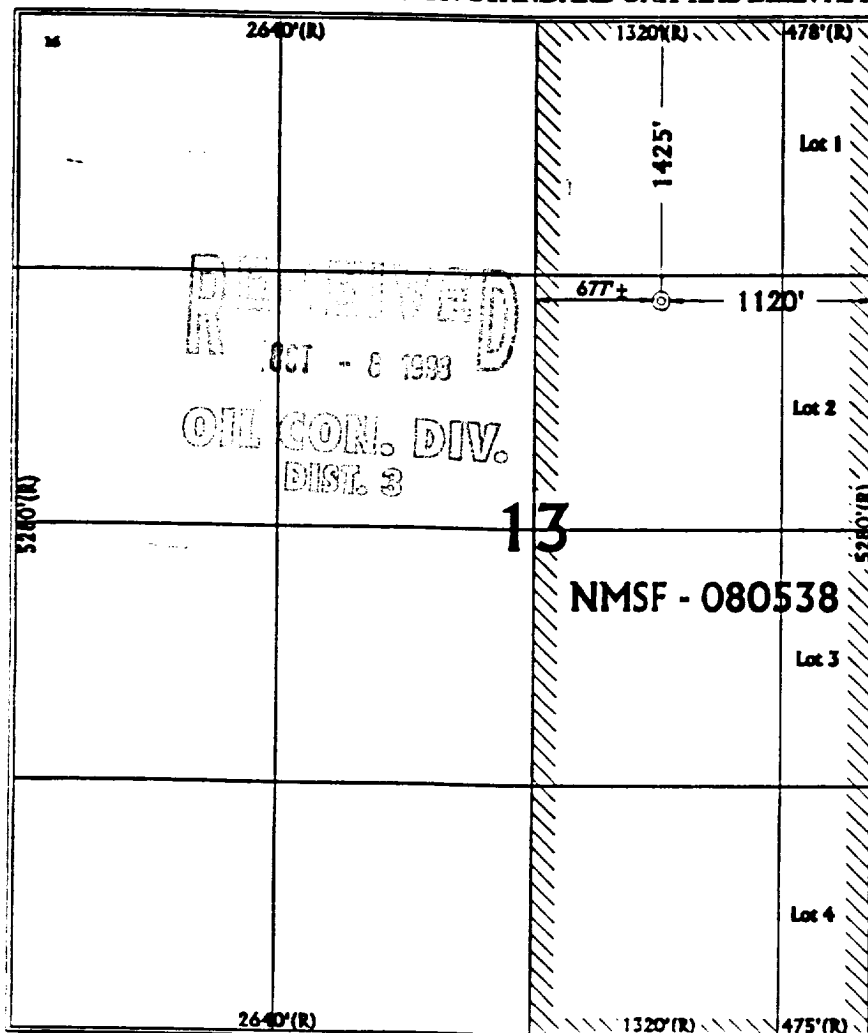
UL or Lot No. G	Section 13	Township 30 N	Range 5 W	Lot Idn	Feet from the 1425	North/South line NORTH	Feet from the 1120	East/West line EAST	County RIO ARRIBA
--------------------	---------------	------------------	--------------	---------	-----------------------	---------------------------	-----------------------	------------------------	----------------------

Bottom Hole Location If Different From Surface

UL or lot no.	Section	Township	Range	Lot Idn	Feet from the	North/South line	Feet from the	East/West line	County
---------------	---------	----------	-------	---------	---------------	------------------	---------------	----------------	--------

Dedicated Acres E/217.76	Joint or Infill	Consolidation Code	Order No.
-----------------------------	-----------------	--------------------	-----------

NO ALLOWABLE WILL BE ASSIGNED TO THIS COMPLETION UNTIL ALL INTERESTS HAVE BEEN CONSOLIDATED
OR A NON-STANDARD UNIT HAS BEEN APPROVED BY THE DIVISION



OPERATOR CERTIFICATION

I hereby certify that the information contained herein is true and complete to the best of my knowledge and belief.

Peggy Bradfield
Signature

Peggy Bradfield
Printed Name

Regulatory Administrator
Title

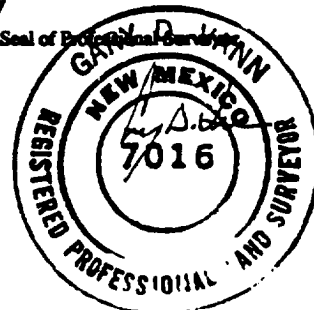
7-27-98
Date

SURVEYOR CERTIFICATION

I hereby certify that the well location shown on this plat was plotted from field notes of actual surveys made by me or under my supervision, and that the same is true and correct to the best of my belief.

July 15, 1998
Date of Survey

Signature and Seal of Professional Surveyor



7016
Certificate Number

OPERATIONS PLAN

Well Name: San Juan 30-5 Unit #263
Location: 1425' FNL, 1120' FEL Section 13, T-30-N, R-5-W
Latitude 36° 48' 56", Longitude 107° 13' 13"
Rio Arriba County, NM
Formation: Basin Fruitland Coal
Elevation: 6948' GL

Formation:	Top	Bottom	Contents
Surface	San Jose	3095'	
Ojo Alamo	3095'	2943'	aquifer
Kirtland	3197'	3239'	
Fruitland	3504'	3722'	gas
Fruitland Coal	3604'	3692'	gas
**Pictured Cliffs	3722'		
Total Depth	3742'		

3702'
**Pictured Cliffs top listed is actually upper PC inner-tongue. Main PC is approximately 150' deeper. Neither the main or inner-tongue is productive in this area and should not be affected by open hole cavitation operations.

Logging Program: Mud logs from below 7" to Total Depth.

Coring Program: none

Mud Program:

Interval	Type	Weight	Vis.	Fluid Loss
0- 200'	Spud	8.4-9.0	40-50	no control
200-3554'	Non-dispersed	8.4-9.0	30-60	no control
3554-3742'	Air			

Casing Program (as listed, the equivalent, or better):

Hole Size	Depth Interval	Csg. Size	Wt.	Grade
12 1/4"	0' - 200'	9 5/8"	32.3#	K-40
8 3/4"	0' - 3554'	7"	20.0#	K-55
6 1/4"	3454' - 3742'	5 1/2"	15.5#	K-55

Tubing Program:

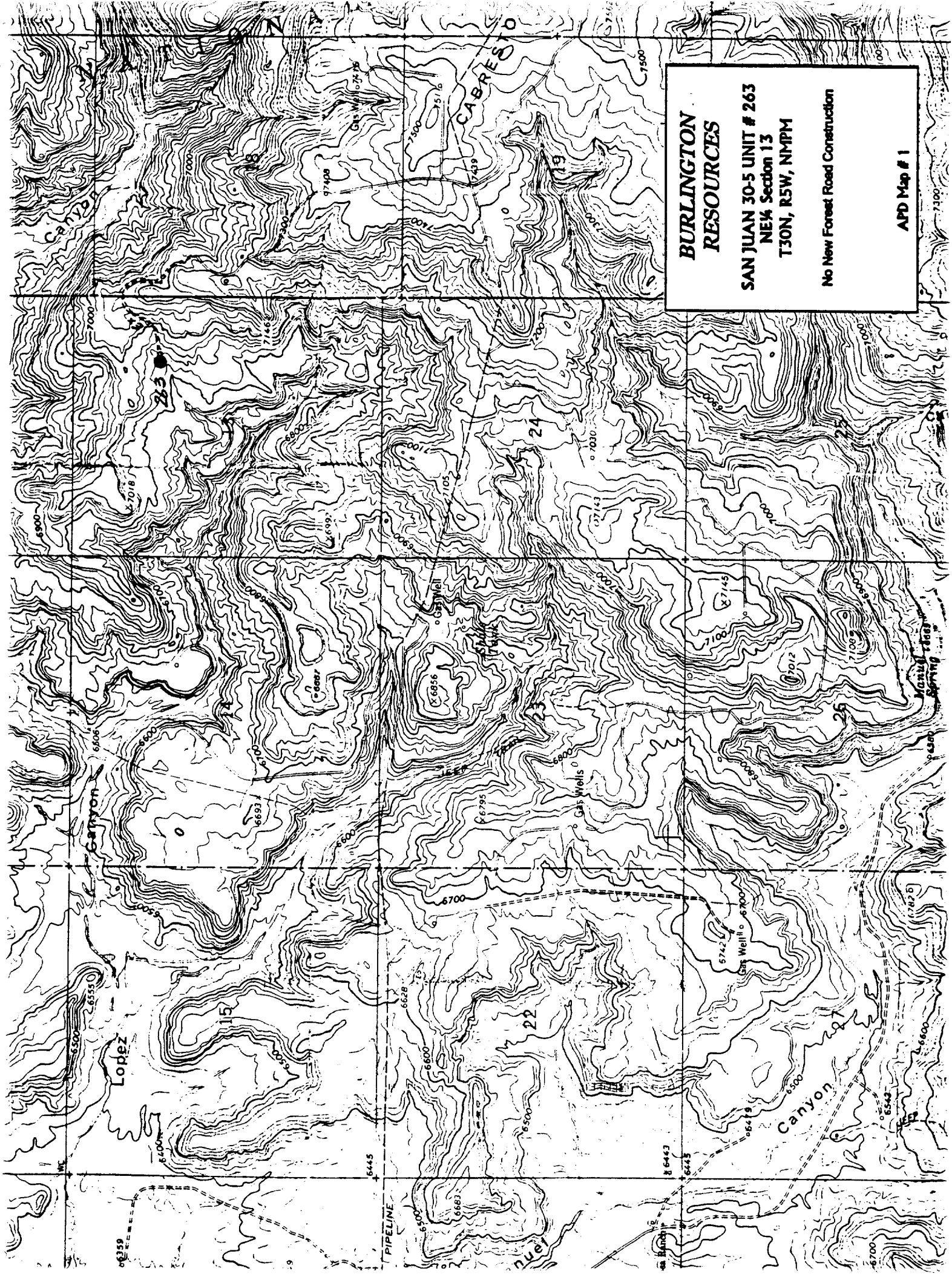
0' - 3742'	2 3/8"	4.7#	J-55
------------	--------	------	------

Float Equipment: 9 5/8" surface casing - saw tooth guide shoe. Centralizers will be run in accordance with Onshore Order #2.

7" intermediate casing - guide shoe and self-fill float collar. Three centralizers run every fourth joint above shoe. Two turbolizing type centralizers - one below and one into the base of the Ojo Alamo @ 2943'. Standard centralizers thereafter every fourth joint up to the base of the surface pipe.

5 1/2" production casing - Pre-drilled liner run to the 7" casing with an overlap. Liner hanger is a slip grip type.

Wellhead Equipment: 9 5/8" x 7" x 2 3/8" x 11" 3000 psi xmas tree assembly.



**BURLINGTON
RESOURCES**

SAN JUAN 30-5 UNIT # 263
NE 1/4 Section 13
T30N, R5W, NMPM

No New Forest Road Construction

APD Map # 1