

DRILLING PROGRAM

Attached to Form 3160-3

Mallon Oil Company

Jicarilla 462-23 No. 5

1186' FNL and 889' FWL (NW/NW) Unit D

Sec. 23, T30N-R3W

Rio Arriba County, New Mexico

LEASE NUMBER: JIC462

1. Geologic name of surface formation: San Jose

2. Estimated tops of important geologic markers:

San Jose	Surface
Nacimiento	2600'
Ojo Alamo	3230'
Kirtland	3458'
Fruitland	3478'
Pictured Cliffs	3468'
Lower P.C.	4017'
Total Depth	4500'

3. Estimated depths of anticipated fresh water, oil, or gas:

San Jose	1500'	Gas
Nacimiento	2600'	Gas
Ojo Alamo	3230'	Gas
Fruitland	3478'	Gas
Pictured Cliffs	3768'	Gas

No other formations are expected to give up oil, gas, or fresh water in measurable quantities.
The surface fresh water sands will be protected by setting 8-5/8" casing at 500' and circulating cement back to surface.

4. Proposed casing program:

<u>Hole Size</u>	<u>Interval</u>	<u>Casing OD</u>	<u>Casing weight, grade, thread</u>
12-1/4"	0-500'	8-5/8"	24 lb/ft, K55, ST&C
7-7/8"	0-4500'	5-1/2"	15.5 lb/ft, K55, LT&C

Cement program:

8-5/8" surface casing: Cemented to surface with 350 sks Class B containing 2% CaCl₂, 0.25 lb/sk Cello Seal, slurry to be mixed at 15.6 lb/gal, yield 1.18 cu ft/sk. Circulate cement to surface.

5-1/2" production casing: Lead slurry 300 sks 65/35 mixed at 13.4 lb/gal, 1.62 cu ft/sk, 30% excess. Tail with 270 sks 50/50 POZ, containing 1/4 lb/sk Cello Seal mixed at 14.15 lb/gal, 1.26 cu ft/sk, 30% excess.

DISTRICT II
P.O. Drawer DD, Artesia, N.M. 88211-0719

DISTRICT III
1000 Rio Brazos Rd., Aztec, N.M. 87410

DISTRICT IV
PO Box 2088, Santa Fe, NM 87504-2088

OIL CONSERVATION DIVISION

P.O. Box 2088
Santa Fe, NM 87504-2088

☐ AMENDED REPORT

WELL LOCATION AND ACREAGE DEDICATION PLAT

1 API Number 30-039-26001		2 Pool Code 72400		3 Pool Name El Blanco PC	
4 Property Code 23825		5 Property Name JICARILLA 462-23			6 Well Number 5
7 OGRID No. 23825		8 Operator Name MALLON OIL COMPANY			9 Elevation 7172'

10 Surface Location

UL or lot no. D	Section 23	Township 30-N	Range 3-W	Lot Idn	Feet from the 1186	North/South line NORTH	Feet from the 889	East/West line WEST	County
--------------------	---------------	------------------	--------------	---------	-----------------------	---------------------------	----------------------	------------------------	--------

11 Bottom Hole Location If Different From Surface

UL or lot no.	Section	Township	Range	Lot Idn	Feet from the	North/South line	Feet from the	East/West line	County
---------------	---------	----------	-------	---------	---------------	------------------	---------------	----------------	--------

12 Dedicated Acres 160	13 Joint or Infill	14 Consolidation Code	15 Order No.
---------------------------	--------------------	-----------------------	--------------

NO ALLOWABLE WILL BE ASSIGNED TO THIS COMPLETION UNTIL ALL INTERESTS HAVE BEEN CONSOLIDATED
OR A NON-STANDARD UNIT HAS BEEN APPROVED BY THE DIVISION

<p>16</p> <p>(CALC. COR.)</p> <p>S 88-38-14 E 2630.72'</p> <p>S 63-12-00 W 2606.34' (REC.)</p> <p>FD. 1917 U.S.G.L.O. B.C.</p> <p>1318'</p> <p>1186'</p> <p>889'</p> <p>23</p> <p>(CALC. COR.)</p> <p>N 00-09-34 E 5269.80'</p>	<p>17 OPERATOR CERTIFICATION</p> <p>I hereby certify that the information contained herein is true and complete to the best of my knowledge and belief</p> <p>Signature <u>Terry Lindeman</u></p> <p>Printed Name <u>Terry Lindeman</u></p> <p>Title <u>Operations Superintendent</u></p> <p>Date <u>August 27, 1998</u></p>
	<p>18 SURVEYOR CERTIFICATION</p> <p>I hereby certify that the well location shown on this plat was plotted from field notes of actual surveys made by me or under my supervision, and that the same is true and correct to the best of my belief</p> <p>Date of Survey <u>6-27-98</u></p> <p>Signature and Seal of Professional Surveyor <u>Roy A. Rush</u></p> <p>8894</p> <p>Certificate Number</p>

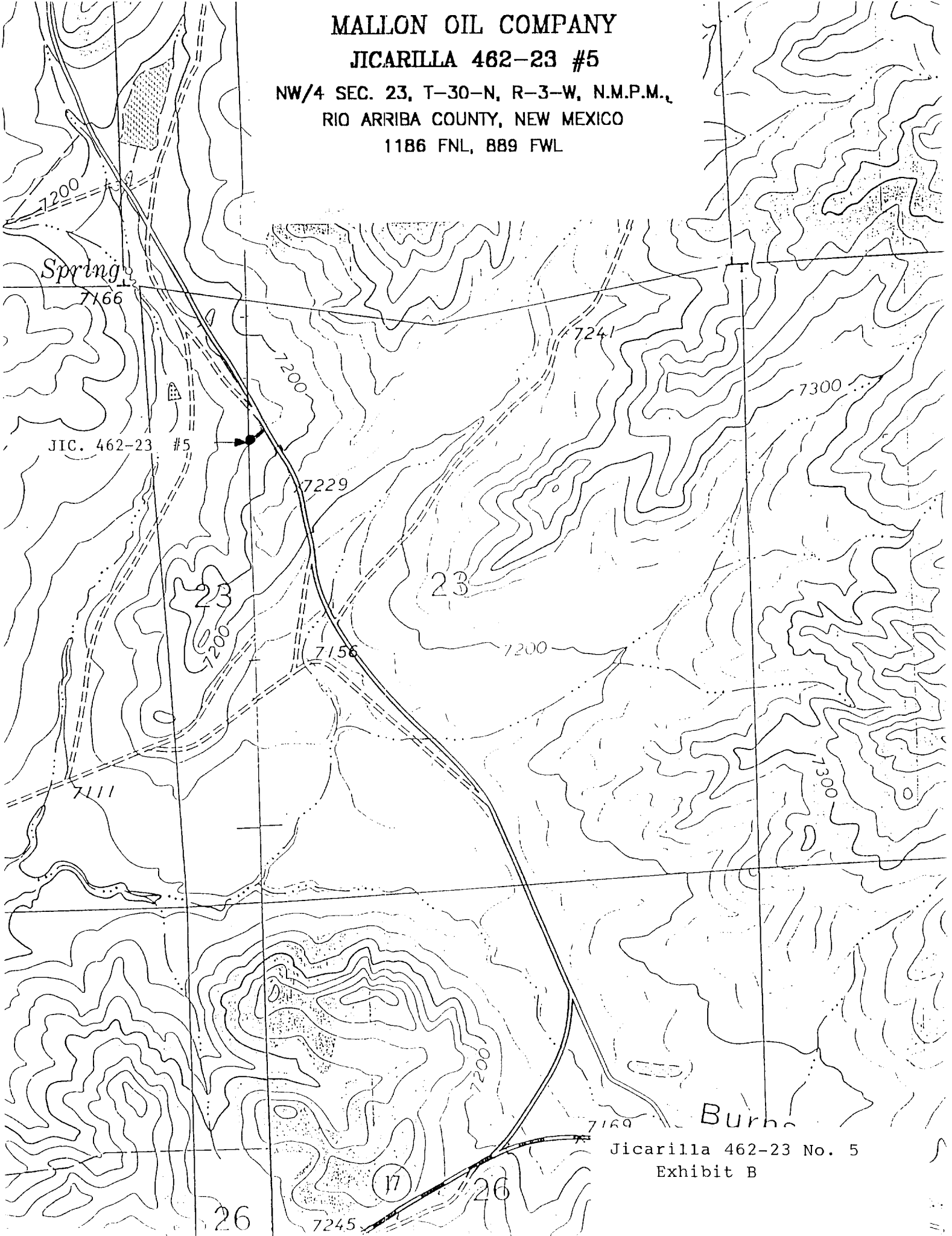
MALLON OIL COMPANY

JICARILLA 462-23 #5

NW/4 SEC. 23, T-30-N, R-3-W, N.M.P.M.,

RIO ARRIBA COUNTY, NEW MEXICO

1186 FNL, 889 FWL



Jicarilla 462-23 No. 5
Exhibit B