

District I
PO Box 1980, Hobbs, NM 88241-1980
District II
811 S. 1st Street, Artesia, NM 88210-2834
District III
1000 Rio Brazos Rd., Aztec, NM 87410
District IV
2040 South Pacheco, Santa Fe, NM 87505

State of New Mexico
Energy, Minerals & Natural Resources Department

OIL CONSERVATION DIVISION
2040 South Pacheco
Santa Fe, NM 87505

Form C-101
Revised October 18, 1994
Instructions on back
Submit to Appropriate District Office
State Lease - 6 Copies
Fee Lease - 5 Copies

☐ AMENDED REPORT

APPLICATION FOR PERMIT TO DRILL, RE-ENTER, DEEPEN, PLUGBACK, OR ADD A ZONE

¹ Operator name and Address Phillips Petroleum Company 5525 Highway 64, NBU 3004 Farmington, NM 87401		² OGRID Number 017654
⁴ Property Code 009258	⁵ Property Name San Juan 30.5 Unit	³ API Number 30-0 39-26040
		⁶ Well No. 20A

⁷ Surface Location									
UL or lot no. P	Section 8	Township 30N	Range 5W	Lot. Idn	Feet from the 1115'	North/South Line South	Feet from the 790'	East/West line East	County Rio Arriba

⁸ Proposed Bottom Hole Location If Different From Surface									
UL or lot no. P	Section	Township	Range	Lot. Idn	Feet from the	North/South Line	Feet from the	East/West line	County
⁹ Proposed Pool 1 Basin Dakota - 71599					¹⁰ Proposed Pool 2 Blanco Mesaverde - 72319				

¹¹ Work Type Code N	¹² Well Type Code M	¹³ Cable/Rotary R	¹⁴ Lease Type Code P	¹⁵ Ground Level Elevation 6287' (unprepared)
¹⁶ Multiple yes	¹⁷ Proposed Depth 7887'	¹⁸ Formation Dakota	¹⁹ Contractor Key Energy - 4CAT	²⁰ Spud Date 4Qtr '98 or 1Qtr '99

²¹ Proposed Casing and Cement Program					
Hole Size	Casing Size	Casing weight/foot	Setting Depth	Sacks of Cement	Estimated TOC
12-1/4"	9-5/8"	36#, J-55	350'	185 sx C1 H	surface
8-3/4"	7"	20#, J-55	3437'	L - 460sx P0Z	
				T - 100sx C1 H	surface
6-1/4"	4-1/2"	11.6#, N-80	7887'	L - 250sx P0Z	
				T - 100 sx C1 H	*

²² Describe the proposed program. If this application is to DEEPEN or PLUG BACK give the data on the present productive zone and proposed new productive zone. Describe the blowout prevention program, if any. Use additional sheets if necessary

* The 4-1/2" casing cement is designed to cover openhole section (with 50% excess).

²³ I hereby certify that the information given above is true and complete to the best of my knowledge and belief

Signature:

Printed name:

Title:

Patsy Clugston

Regulatory Assistant

OIL CONSERVATION DIVISION

Approved by:

Title:

Approval Date:

Expiration Date:

DEC 9 1998
DEPUTY OIL & GAS INSPECTOR, DIST. #3
DEC 9 1999

District I
PO Box 1980, Hobbs, NM 88241-1980
District II
811 South First, Artesia, NM 88210
District III
1000 Rio Brazos Rd., Aztec, NM 87410
District IV
2040 South Pacheco, Santa Fe, NM 87505

STATE OF NEW MEXICO
Energy, Minerals & Natural Resources Department

OIL CONSERVATION DIVISION
2040 South Pacheco
Santa Fe, NM 87505

Revised October 18, 1994

Instructions on back

Submit to Appropriate District Office

State Lease - 4 Copies

Fee Lease - 3 Copies

RECEIVED
BLN

☐ AMENDED REPORT

98 DEC -3 PM 2:44

WELL LOCATION AND ACREAGE DEDICATION PLAT

APN Number 30-039-26040		Pool Code 71599	Basin Dakota	Pool Name 070 FARMINGTON, NM
Property Code 009258	Property Name SAN JUAN 30-5 UNIT			Well Number 20A
OGRIID No. 017654	Operator Name PHILLIPS PETROLEUM COMPANY			Elevation 6287'

10 Surface Location

UL, or lot no.	Section	Township	Range	Lot Idn	Feet from the	North/South line	Feet from the	East/West line	County
P	8	30N	5W		1115'	SOUTH	790'	EAST	RIO ARriba

11 Bottom Hole Location If Different From Surface

UL, or lot no.	Section	Township	Range	Lot Idn	Feet from the	North/South line	Feet from the	East/West line	County
P									

12 Dedicated Acres	13 Joint or Infill	14 Consolidation Code	15 Order No.
320 E/2	N		

NO ALLOWABLE WILL BE ASSIGNED TO THIS COMPLETION UNTIL ALL INTERESTS HAVE BEEN CONSOLIDATED OR A NON-STANDARD UNIT HAS BEEN APPROVED BY THE DIVISION

<div>16</div> <div>5279.34'</div> <div>5280.0'</div> <div>790'</div> <div>1115'</div>	<div>17 OPERATOR CERTIFICATION</div> <p>I hereby certify that the information contained herein is true and complete to the best of my knowledge and belief</p> <div>Signature <i>Richard Allred</i> by PC</div> <div>Printed Name Richard Allred</div> <div>Title Drilling Superintendent</div> <div>Date 11-23-98</div>
	<div>18 SURVEYOR CERTIFICATION</div> <p>I hereby certify that the well location shown on this plat was plotted from field notes of actual surveys made by me or under my supervision, and that the same is true and correct to the best of my belief.</p> <div>Date of Survey 09/17/98</div> <div>Signature and Seal of Professional Surveyor: </div>

District I
PO Box 1980, Hobbs, NM 88241-1980
District II
811 South First, Artesia, NM 88210
District III
1000 Rio Brazos Rd., Aztec, NM 87410
District IV
2040 South Pacheco, Santa Fe, NM 87505

STATE OF NEW MEXICO
Energy, Minerals & Natural Resources Department

OIL CONSERVATION DIVISION
2040 South Pacheco
Santa Fe, NM 87505

Revised October 18, 1994

Instructions on back

Submit to Appropriate District Office

State Lease - 4 Copies

Fee Lease - 3 Copies

RECEIVED
PLM

☐ AMENDED REPORT

93 DEC -3 PM 2:44

WELL LOCATION AND ACREAGE DEDICATION PLAT

1. Well Number 30-039-26040		2. Pool Code 72319	3. Pool Name Blanco Mesavende		4. Township BLANCO, NM
5. Property Code 009258	6. Property Name SAN JUAN 30-5 UNIT				7. Well Number 20A
8. OGRID No. 017654	9. Operator Name PHILLIPS PETROLEUM COMPANY				10. Elevation 6287'

10 Surface Location

UL, or lot no.	Section	Township	Range	Lot Idn	Feet from the	North/South line	Feet from the	East/West line	County
P	8	30N	5W		1115'	SOUTH	790'	EAST	RIO ARRIBA

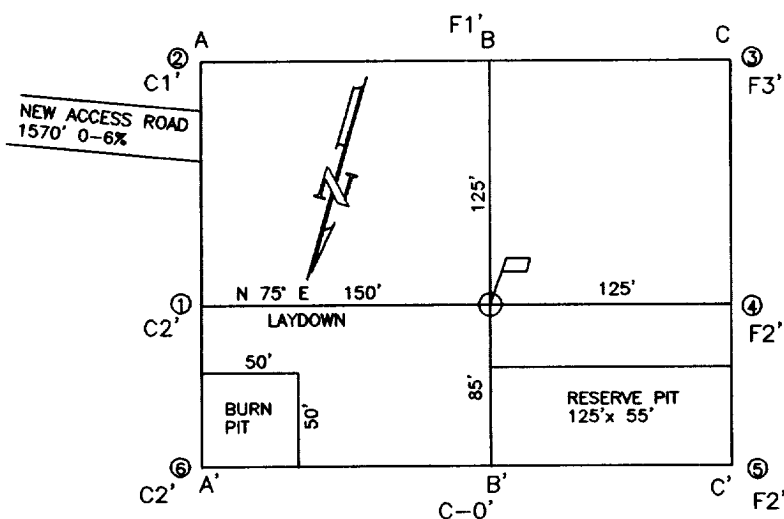
11 Bottom Hole Location If Different From Surface

UL, or lot no.	Section	Township	Range	Lot Idn	Feet from the	North/South line	Feet from the	East/West line	County
P									

12 Dedicated Acres	13 Joint or Infill	14 Consolidation Code	15 Order No.
320 E/2	Y		

NO ALLOWABLE WILL BE ASSIGNED TO THIS COMPLETION UNTIL ALL INTERESTS HAVE BEEN CONSOLIDATED OR A NON-STANDARD UNIT HAS BEEN APPROVED BY THE DIVISION

16 5280.0'	5279.34'	5280.0'	17 OPERATOR CERTIFICATION I hereby certify that the information contained herein is true and complete to the best of my knowledge and belief. Signature: <i>Richard Allred</i> Printed Name: Richard Allred Title: Drilling Superintendent Date: 11-23-98	
	8			18 SURVEYOR CERTIFICATION I hereby certify that the well location shown on this plat was plotted from field notes of actual surveys made by me or under my supervision, and that the same is true and correct to the best of my belief. Date of Survey: 09/17/98 Signature and Seal of Professional Surveyer: Certificate Number: 11393
	FEE			
	790'			
5280.0'	5280.0'	1115'		



A-A' ELEVATION

	C/L			
6307				
6297				
6287				
6277				
6267				

B-B'

	C/L			
6307				
6297				
6287				
6277				
6267				

C-C'

	C/L			
6307				
6297				
6287				
6277				
6267				

COMPANY: PHILLIPS PETROLEUM CO.

LEASE: SAN JUAN 30-5 UNIT #20A

FOOTAGE: 1115 FSL 790 FEL UNIT P

SEC. 8 TWN. 30 N RNG. 5 W N.M.P.M.

COUNTY, RIO ARRIBA STATE, N.M.

ELEVATION: 6287

LATITUDE: 36-49-21

LONGITUDE: 107-22-26



PHILLIPS PETROLEUM CO.
FARMINGTON, NEW MEXICO

SURVEYED: 9/17/98

REV. DATE:

APP. BY H.B.

DRAWN BY: S.B.

DATE DRAWN: 9/25/98

FILE NAME: 30520AC

UNITED
FIELD SERVICES INC.

P.O. BOX 3651
FARMINGTON, NM 87499
OFFICE: (505)325-5319

PHILLIPS PETROLEUM CO.

SAN JUAN 30-5 UNIT #20A

SE/4 SEC.8, T.30 N., R.5 W., N.M.P.M.,
RIO ARriba COUNTY, NEW MEXICO

