

PKD

DISTRICT II  
P.O. Drawer DD, Artesia, N.M. 88211-0719DISTRICT III  
1000 Rio Bravo Rd., Artee, N.M. 87410DISTRICT IV  
P.O. Box 2088, Santa Fe, NM 87504-2088

## OIL CONSERVATION DIVISION

P.O. Box 2088  
Santa Fe, NM 87504-2088Instructions on back  
Submit to Appropriate District Office  
State Lease - 4 Copies  
Fee Lease - 3 Copies☐ AMENDED REPORT

## WELL LOCATION AND ACREAGE DEDICATION PLAT

*API Number 30-039-26060		*Pool Code 72400	*Pool Name E Blanco PC
*Property Code 23823	*Property Name JICARILLA 462 26		*Well Number 10
*OGRD No. 013925	*Operator Name MALLON OIL COMPANY		*Elevation 7236'

## 10 Surface Location

UL or lot no. L	Section 26	Township 30-N	Range 3-W	Lot Id: 	Feet from the 1454	North/South line SOUTH	Feet from the 1136	East/West line WEST	County RIO ARriba
--------------------	---------------	------------------	--------------	-------------	-----------------------	---------------------------	-----------------------	------------------------	----------------------

## 11 Bottom Hole Location If Different From Surface

UL or lot no.	Section	Township	Range	Lot Id:	Feet from the	North/South line	Feet from the	East/West line	County
---------------	---------	----------	-------	---------	---------------	------------------	---------------	----------------	--------

*Dedicated Acres 160	*Joint or Infill	*Consolidation Code	*Order No.
-------------------------	------------------	---------------------	------------

NO ALLOWABLE WILL BE ASSIGNED TO THIS COMPLETION UNTIL ALL INTERESTS HAVE BEEN CONSOLIDATED  
OR A NON STANDARD UNIT HAS BEEN APPROVED BY THE DIVISION

10 CALC'D. CORNER				17 OPERATOR CERTIFICATION I hereby certify that the information contained herein is true and complete to the best of my knowledge and belief.  Signature <u>T. G. Lindeman</u> Printed Name Operations Superintendent Title September 4, 1998 Date	
<p>5270.0'</p> <p>5202.5'</p> <p>1301.0'</p> <p>1454'</p> <p>1136'</p> <p>1317.5'</p> <p>FD. MARKED STONE</p> <p>26</p> <p>N 89-41-10 E</p> <p>RECEIVED</p> <p>DEC 24 1998</p> <p>OIL CONSERV. DIV.</p>				18 SURVEYOR CERTIFICATION I hereby certify that the well location shown on this plat was plotted from field notes of actual surveys made by me or under my supervision, and that the same is true and correct to the best of my belief.  Date of Survey Signature and Seal of Professional Surveyor:  8894 Certificate Number	

## DRILLING PROGRAM

Attached to Form 3160-3

Mallon Oil Company

**Jicarilla 462-26 No. 10**

1454' FSL and 1136' FWL (NW/SW) Unit L

Sec. 26, T30N-R3W

Rio Arriba County, New Mexico

**LEASE NUMBER: JIC462**

**1. Geologic name of surface formation: San Jose**

**2. Estimated tops of important geologic markers:**

San Jose	Surface
Nacimiento	2600'
Ojo Alamo	3230'
Kirtland	3458'
Fruitland	3478'
Pictured Cliffs	3468'
Lower P.C.	4017'
Total Depth	4500'

**3. Estimated depths of anticipated fresh water, oil, or gas:**

San Jose	1500'	Gas
Nacimiento	2600'	Gas
Ojo Alamo	3230'	Gas
Fruitland	3478'	Gas
Pictured Cliffs	3768'	Gas

No other formations are expected to give up oil, gas, or fresh water in measurable quantities.  
The surface fresh water sands will be protected by setting 8-5/8" casing at 500' and circulating cement back to surface.

**4. Proposed casing program:**

<u>Hole Size</u>	<u>Interval</u>	<u>Casing OD</u>	<u>Casing weight, grade, thread</u>
12-1/4"	0-500'	8-5/8"	24 lb/ft, K55, ST&C
7-7/8"	0-4500'	5-1/2"	15.5 lb/ft, K55, LT&C

**Cement program:**

8-5/8" surface casing: Cemented to surface with 350 sks Class B containing 2% CaCl<sub>2</sub>, 0.25 lb/sk Cello Seal, slurry to be mixed at 15.6 lb/gal, yield 1.18 cu ft/sk. Circulate cement to surface.

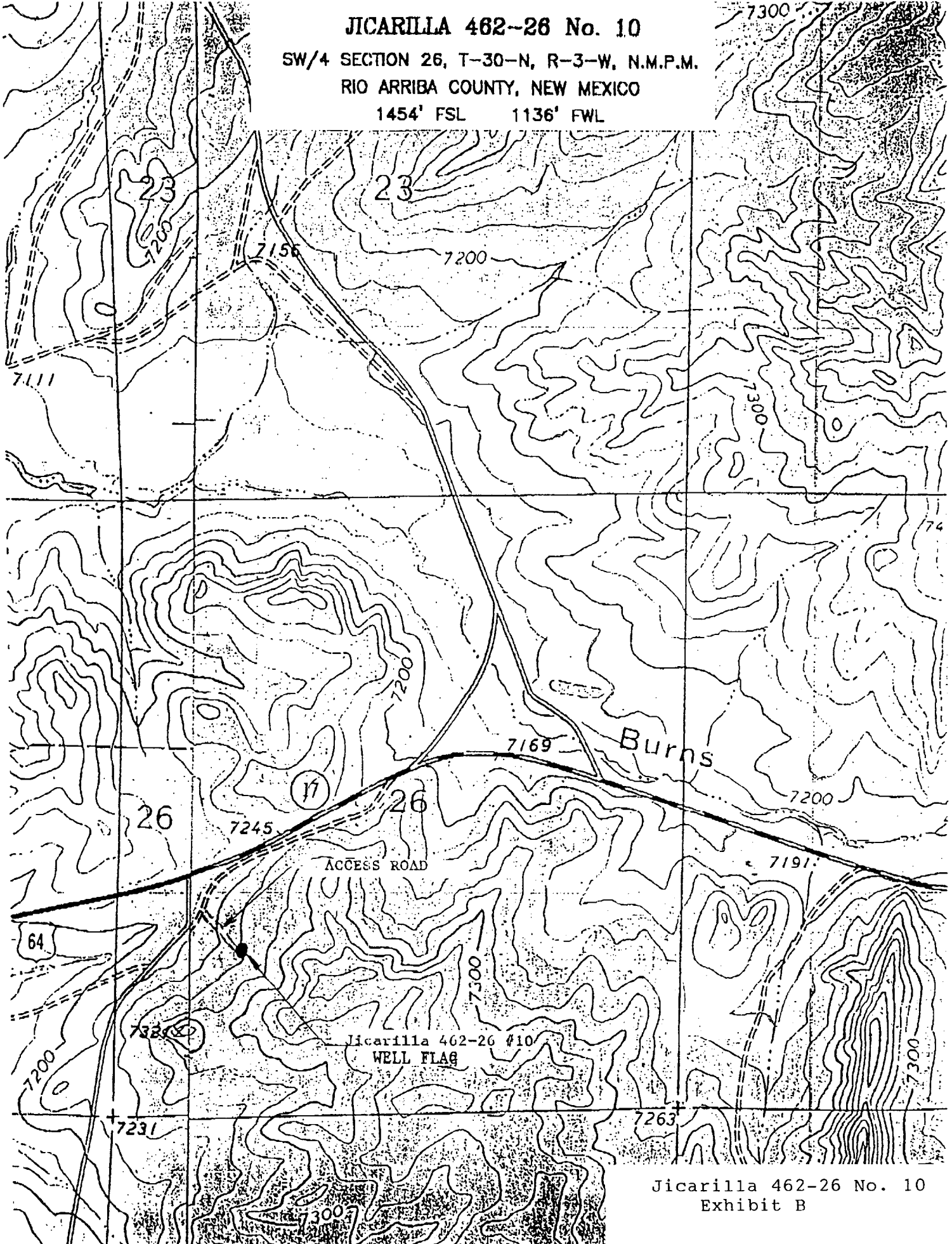
5-1/2" production casing: Lead slurry 300 sks 65/35 mixed at 13.4 lb/gal, 1.62 cu ft/sk, 30% excess. Tail with 270 sks 50/50 POZ, containing 1/4 lb/sk Cello Seal mixed at 14.15 lb/gal, 1.26 cu ft/sk, 30% excess.

JICARILLA 462-26 No. 10

SW/4 SECTION 26, T-30-N, R-3-W, N.M.P.M.

RIO ARRIBA COUNTY, NEW MEXICO

1454' FSL 1136' FWL



Jicarilla 462-26 No. 10  
Exhibit B