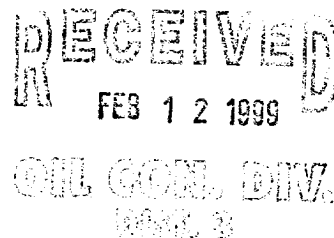




NEW MEXICO ENERGY, MINERALS  
& NATURAL RESOURCES DEPARTMENT

OIL CONSERVATION DIVISION  
2040 South Pacheco Street  
Santa Fe, New Mexico 87505  
(505) 827-7131

February 10, 1999



Burlington Resources Oil & Gas Company  
P. O. Box 4289  
Farmington, New Mexico 87499-4289  
Attention: Peggy Bradfield

*Administrative Order NSL-4206*

Dear Ms. Bradfield:

Reference is made to your application dated February 5, 1999 for an exception to the well location requirements provided within the "*Special Rules and Regulations for the Basin-Dakota Pool*," as promulgated by Division Order No. R-10987. The E/2 of Section 29, Township 30 North, Range 6 West, NMPM, Rio Arriba County, New Mexico is to be dedicated to the proposed well in order to form a standard 320-acre gas spacing and proration unit for the Basin-Dakota Pool.

The application has been duly filed under the provisions of New Mexico Oil Conservation Division Rules 104.F and 605.B.

By the authority granted me under the provisions of Division Rule 104.F(2), the following described well to be drilled at an unorthodox gas well location in Section 29 is hereby approved:

**San Juan "30-6" Unit Well No. 128**  
**1380' FSL & 1220' FEL (Unit I)**  
**(API No. 30-039-26076).**

Further, the aforementioned well and spacing unit will be subject to all existing rules, regulations, policies, and procedures applicable to prorated gas pools in Northwest, New Mexico.

Sincerely,

Lori Wrotenbery  
Director

LW/MES/kv

cc: New Mexico Oil Conservation Division - Aztec /  
U. S. Bureau of Land Management - Farmington

# BURLINGTON RESOURCES

---

SAN JUAN DIVISION

February 5, 1999

Sent Federal Express

Mr. Michael Stogner  
New Mexico Oil Conservation Division  
2040 South Pacheco  
Santa Fe, New Mexico 87505

Re: San Juan 30-6 Unit #128  
1380'FSL, 1220'FEL, Section 29, T-30-N, R-6-W, Rio Arriba County  
30-039-26076

Dear Mr. Stogner:

Burlington Resources is applying for administrative approval of an unorthodox gas well location for the Basin Dakota pool.

This application for the referenced location is due to the presence of archaeology, and to minimize surface land use at the request of the landowner. The referenced location will utilize half of the existing well pad for the San Juan 30-6 Unit #55A Mesa Verde well located at 1450' FSL, 1120' FEL and will not require new road construction.

Production from the Basin Dakota pool is to be included in 320 acre gas spacing and proration unit for the east half (E/2) in Section 29.

The following attachments are for your review:

- Application for Permit to Drill.
- Completed C-102 at referenced location.
- Offset operators/owners plat - Burlington is the operator of the unit.
- 7.5 minute topographic map showing no new road construction.
- 7.5 minute topographic map outlining standard windows for the Dakota.

We appreciate your earliest consideration of this application.

Sincerely,



Peggy Bradfield  
Regulatory/Compliance Administrator

xc: NMOCD - Aztec District Office

District I  
PO Box 1980, Hobbs, NM 88241-1980  
District II  
811 South First, Artesia, NM 88210  
District III  
1000 Rio Brazos Rd., Aztec, NM 87410  
District IV  
2040 South Pacheco, Santa Fe, NM 87505

State of New Mexico  
Energy, Minerals & Natural Resources Department

OIL CONSERVATION DIVISION  
2040 South Pacheco  
Santa Fe, NM 87505

Form C-101  
Revised October 18, 1994  
Instructions on back  
Submit to Appropriate District Office  
State Lease - 6 Copies  
Fee Lease - 5 Copies

AMENDED REPORT

APPLICATION FOR PERMIT TO DRILL, RE-ENTER, DEEPEN, PLUGBACK, OR ADD A ZONE

<sup>1</sup> Operator Name and Address. Burlington Resources Oil & Gas Company PO Box 4289, Farmington, NM 87499		<sup>2</sup> OGRID Number 14538
<sup>4</sup> Property Code 7469	<sup>3</sup> Property Name San Juan 30-6 Unit	<sup>5</sup> API Number 30 - 039 - 26076
		<sup>6</sup> Well No. 128

<sup>7</sup> Surface Location

UL or lot no.	Section	Township	Range	Lot Idn	Feet from the	North/South line	Feet from the	East/West line	County
I	29	30N	6W		1380'	South	1220'	East	Rio Arriba

<sup>8</sup> Proposed Bottom Hole Location If Different From Surface

UL or lot no.	Section	Township	Range	Lot Idn	Feet from the	North/South line	Feet from the	East/West line	County
<sup>9</sup> Proposed Pool 1 Basin Dakota					<sup>10</sup> Proposed Pool 2				

<sup>11</sup> Work Type Code N	<sup>12</sup> Well Type Code G	<sup>13</sup> Cable/Rotary Rotary	<sup>14</sup> Lease Type Code Fee	<sup>15</sup> Ground Level Elevation 6377' GR
<sup>16</sup> Multiple N	<sup>17</sup> Proposed Depth 8000'	<sup>18</sup> Formation Dakota	<sup>19</sup> Contractor N/a	<sup>20</sup> Spud Date N/a

<sup>21</sup> Proposed Casing and Cement Program

Hole Size	Casing Size	Casing weight/foot	Setting Depth	Sacks of Cement	Estimated TOC
12 1/4"	8 5/8"	24#	320'	396 cu ft	Surface
7 7/8"	4 1/2"	10.5#	8000'	2550 cu ft	Surface

<sup>22</sup> Describe the proposed program. If this application is to DEEPEN or PLUG BACK give the data on the present productive zone and proposed new productive zone. Describe the blowout prevention program, if any. Use additional sheets if necessary.

11" 2000 psi minimum double gate BOP

<sup>23</sup> I hereby certify that the information given above is true and complete to the best of my knowledge and belief. Signature: <i>Peggy Bradfield</i>		OIL CONSERVATION DIVISION	
Printed name: Peggy Bradfield		Approved by: <i>Ernie Busch</i>	
Title: Regulatory/Compliance Administrator		Title: <i>DEPUTY OIL &amp; GAS INSPECTOR DIST. 4</i>	
Date: 1-15-99		Approval Date:	Expiration Date:
Phone: 505-326-9700		Conditions of Approval: Attached <input type="checkbox"/> <i>HOLD C104 FOR NSC</i>	

District I  
PO Box 1980, Hobbs, NM 88241-1980

District II  
PO Drawer 00, Artesia, NM 88211-0719

District III  
1000 Rio Brazos Rd., Aztec, NM 87410

District IV  
PO Box 2088, Santa Fe, NM 87504-2088

State of New Mexico  
Energy, Minerals & Natural Resources Department

OIL CONSERVATION DIVISION  
PO Box 2088  
Santa Fe, NM 87504-2088

Form C-102  
Revised February 21, 1994  
Instructions on back  
Submit to Appropriate District Office  
State Lease - 4 Copies  
Fee Lease - 3 Copies

☐ AMENDED REPORT

WELL LOCATION AND ACREAGE DEDICATION PLAT

<sup>1</sup> API Number 30-039- <i>26076</i>	<sup>4</sup> Pool Code 71599	<sup>3</sup> Pool Name Basin Dakota
<sup>6</sup> Property Code 7469	<sup>5</sup> Property Name SAN JUAN 30-6 UNIT	<sup>7</sup> Well Number 128
<sup>8</sup> OGRID No. 14538	<sup>9</sup> Operator Name BURLINGTON RESOURCES OIL & GAS COMPANY	<sup>10</sup> Elevation 6377

<sup>10</sup> Surface Location

UL or lot no.	Section	Township	Range	Lot 10n	Feet from the	North/South line	Feet from the	East/West line	County
I	29	30N	6W		1380	SOUTH	1220	EAST	RIO ARriba

<sup>11</sup> Bottom Hole Location If Different From Surface

UL or lot no.	Section	Township	Range	Lot 10n	Feet from the	North/South line	Feet from the	East/West line	County

<sup>12</sup> Dedicated Acres E/320	<sup>13</sup> Joint or Infill	<sup>14</sup> Consolidation Code	<sup>15</sup> Order No.
--	-------------------------------	----------------------------------	-------------------------

NO ALLOWABLE WILL BE ASSIGNED TO THIS COMPLETION UNTIL ALL INTERESTS HAVE BEEN CONSOLIDATED  
OR A NON-STANDARD UNIT HAS BEEN APPROVED BY THE DIVISION

<sup>16</sup>	5272.08'		<sup>17</sup> OPERATOR CERTIFICATION I hereby certify that the information contained herein is true and complete to the best of my knowledge and belief  <i>Peggy Bradfield</i> Signature Peggy Bradfield Printed Name Regulatory Administrator Title 1-15-99 Date
		FEE	
		NMSF-080712A	
	29		
		FEE	
5280.00'			<sup>18</sup> SURVEYOR CERTIFICATION I hereby certify that the well location shown on this plat was plotted from field notes of actual surveys made by me or under my supervision, and that the same is true and correct to the best of my belief.  NOVEMBER 3, 1998 Date of Survey Signature and Seal of Professional Surveyor <i>Neale C. Edwards</i> NEALE C. EDWARDS NEW MEXICO 6857 Certification
		1220'	
		1380'	
	5281.32'		

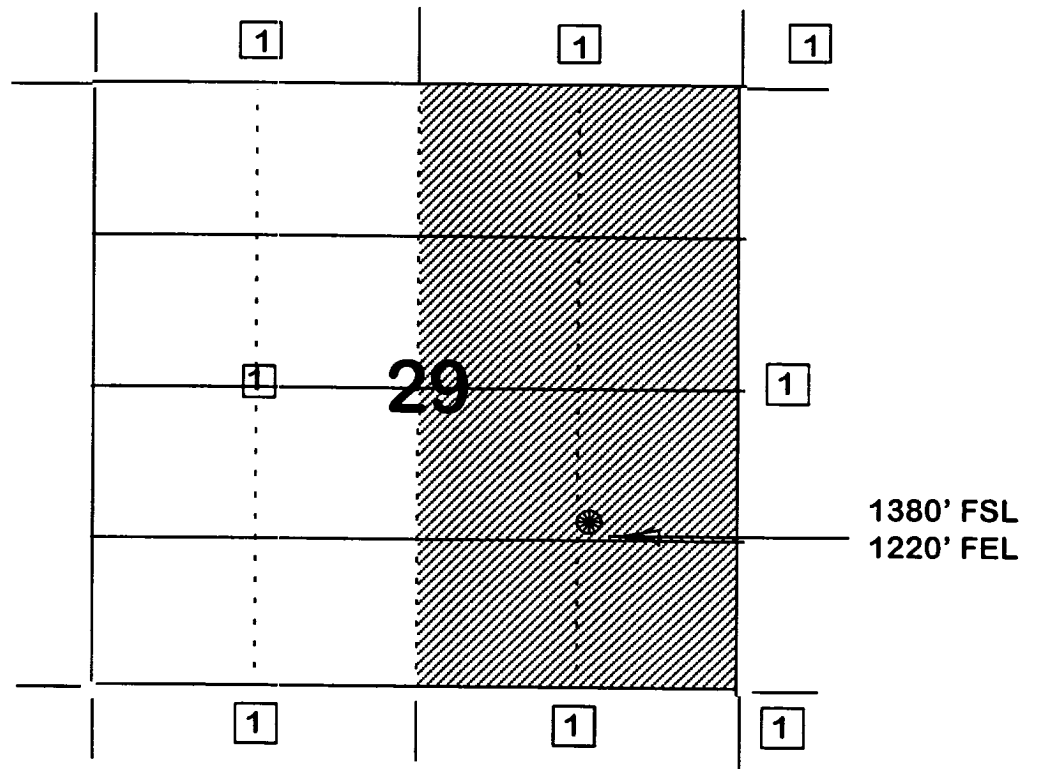
***BURLINGTON RESOURCES OIL AND GAS COMPANY***

**San Juan 30-6 Unit #128  
OFFSET OPERATOR \ OWNER PLAT**

**Dakota Formation**

**Nonstandard Location**

**Township 30 North, Range 6 West**



1) Burlington Resources

1380' FSL & 1220' FEL, SECTION 29, T30N, R6W, N.M.P.M.  
RIO ARRIBA COUNTY, NEW MEXICO

NO NEW CONSTRUCTION  
NE/SE SECTION 29, T30N, R6W.

