

UNITED STATES
DEPARTMENT OF THE INTERIOR
BUREAU OF LAND MANAGEMENT

APPLICATION FOR PERMIT TO DRILL OR DEEPEN

1a. TYPE OF WORK

DRILL ☒

DEEPEN ☐

b. TYPE OF WELL

OIL ☐

GAS ☒

WELL ☐

OTHER ☐

SINGLE ☐

MULTIPLE ☐

2. NAME OF OPERATOR

Taurus Exploration, U.S.A., Inc.

3. ADDRESS AND TELEPHONE NO.

2198 Bloomfield Highway; Farmington, NM 87401

4. LOCATION OF WELL (Report location clearly and in accordance with any State requirements.)

At surface

794' FSL, 1551' FWL

At proposed prod. zone

14. DISTANCE IN MILES AND DIRECTION FROM NEAREST TOWN OR POST OFFICE*

Seven (7) miles NE of Gobernador, New Mexico

15. DISTANCE FROM PROPOSED*

LOCATION TO NEAREST

PROPERTY OR LEASE LINE, FT.

(Also to nearest drlg. unit line, if any)

794'

16. NO. OF ACRES IN LEASE

1819.52

17. NO. OF ACRES ASSIGNED

TO THIS WELL

219.52

18. DISTANCE FROM PROPOSED LOCATION*

TO NEAREST WELL, DRILLING, COMPLETED,

OR APPLIED FOR, ON THIS LEASE, FT.

4000'

19. PROPOSED DEPTH

8835

20. ROTARY OR CABLE TOOLS

Rotary

21. ELEVATIONS

(This section is subject to technical and procedural review pursuant to 43 CFR 3165.3 and appeal pursuant to 43 CFR 3165.4.)

7394' G.L.

22. APPROX. DATE WORK WILL START*

DRILLING OPERATIONS AUTHORIZED ARE
SUBJECT TO COMPLIANCE WITH ATTACHED
"GENERAL REQUIREMENTS"

23.

PROPOSED CASING AND CEMENTING PROGRAM

SIZE OF HOLE	GRADE, SIZE OF CASING	WEIGHT PER FOOT	SETTING DEPTH	QUANTITY OF CEMENT
15	10 3/4	32.75#	200	236 cu. ft. circulated
9 7/8	7 5/8	26.4#	4590	1890 cu. ft. circulated - 2 stages
6 3/4	5 1/2	17#	8835	538 cu. ft. to intermediate

An application with the NMOC is being submitted to dual complete selectively perforated sand water fracture the Mesaverde and Dakota formations. This gas is dedicated.

SEE ATTACHED FOR
CONDITIONS OF APPROVAL

IN ABOVE SPACE DESCRIBE PROPOSED PROGRAM: If proposal is to deepen, give data on present productive zone and proposed new productive zone. If proposal is to drill or deepen directionally, give pertinent data on subsurface locations and measured and true vertical depths. Give blowout preventer program, if any.

24.

SIGNED

TITLE Production Superintendent

DATE 5/14/98

(This space for Federal or State office use)

PERMIT NO.

APPROVAL DATE

Application approval does not warrant or certify that the applicant holds legal or equitable title to those rights in the subject lease which would entitle the applicant to conduct operations thereon.

CONDITIONS OF APPROVAL, IF ANY:

HOLD C104 FOR

APPROVED BY

TITLE

DATE

*See Instructions On Reverse Side

Title 18 U.S.C. Section 1001, makes it a crime for any person knowingly and willfully to make to any department or agency of the United States any false, fictitious or fraudulent statements or representations as to any matter within its jurisdiction.

NMOC

District I
PM) Box 1980, Hobbs, NM 88241-1980
District II
811 South First, Artesia, NM 88210
District III
1000 Rio Brazos Rd., Aztec, NM 87410
District IV
2040 South Pacheco, Santa Fe, NM 87505

State of New Mexico
Energy, Minerals & Natural Resources Department

Form C-102
Revised October 18, 1994

OIL CONSERVATION DIVISION RECEIVED
2040 South Pacheco
Santa Fe, NM 87505

Submit to Appropriate District Office
State Lease - 4 Copies
Fee Lease - 3 Copies

53 JUN -1 PM 1:48 AMENDED REPORT

WELL LOCATION AND ACREAGE DEDICATION PLAT NM

¹ A.M. Number 30-039-2669	² Pool Code 72324/71599	³ Pool Name Blanco Mesaverde/Basin Dakota
⁴ Property Code 21185	⁵ Property Name CARSON	⁶ Well Number 4M
⁷ OGRID No. 162928	⁸ Operator Name TAURUS EXPLORATION U.S.A., INC.	⁹ Elevation 7394

¹⁰ Surface Location

UL or lot no.	Section	Township	Range	Lot Idn	Feet from the	North/South line	Feet from the	East/West line	County
N	19	30N	4W		794	SOUTH	1551	WEST	RIO ARRIBA

¹¹ Bottom Hole Location If Different From Surface

UL or lot no.	Section	Township	Range	Lot Idn	Feet from the	North/South line	Feet from the	East/West line	County

¹² Dedicated Acres 219.52/219.52	¹³ Joint or Infill	¹⁴ Consolidation Code	¹⁵ Order No.
--	-------------------------------	----------------------------------	-------------------------

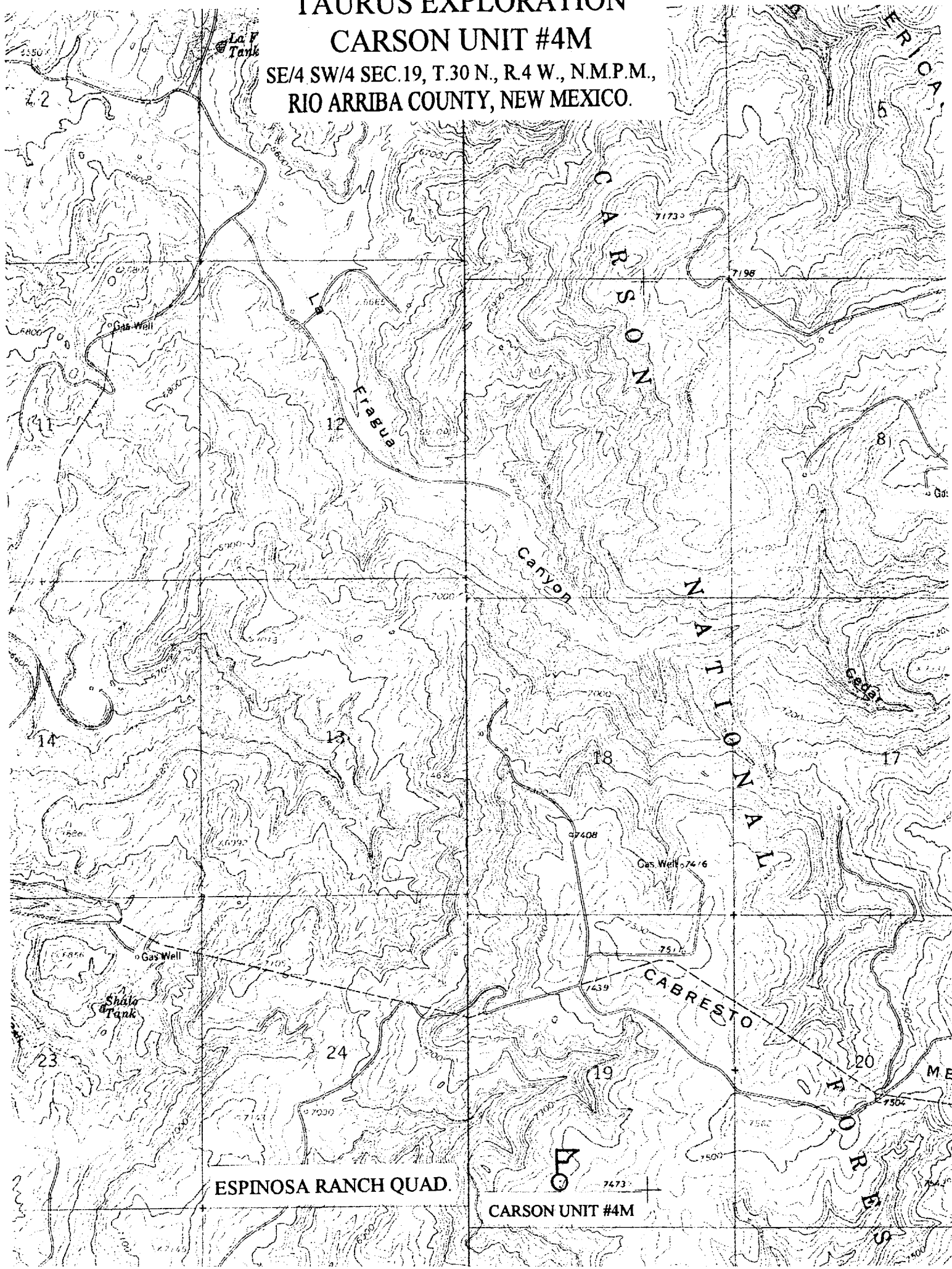
NO ALLOWABLE WILL BE ASSIGNED TO THIS COMPLETION UNTIL ALL INTERESTS HAVE BEEN CONSOLIDATED OR A NON-STANDARD UNIT HAS BEEN APPROVED BY THE DIVISION

¹⁶ LOT 1 LOT 2 LOT 3 LOT 4 NORTH 5254.92 WEST 4448.40 1551' 794' WEST 4453.68 1813.68	RECEIVED MAY 20 1999 OIL CON. DIV. DIST. 3		¹⁷ OPERATOR CERTIFICATION I hereby certify that the information contained herein is true and complete to the best of my knowledge and belief Signature Gary W. Brink Printed Name Production Superintendent Title 5/14/98 Date ¹⁸ SURVEYOR CERTIFICATION I hereby certify that the well location shown on this plat was plotted from field notes of actual surveys made by me or under my supervision, and that the same is true and correct to the best of my belief. 4-29-98 Date of Survey Signature and Seal of Professional Surveyer: HENRY P. BROADHURST, JR. NEW MEXICO REGISTERED PROFESSIONAL SURVEYOR 1998

TAURUS EXPLORATION

CARSON UNIT #4M

SE/4 SW/4 SEC.19, T.30 N., R.4 W., N.M.P.M.,
RIO ARriba COUNTY, NEW MEXICO.



ESPINOSA RANCH QUAD.

CARSON UNIT #4M