

CONFIDENTIAL

Form 3160-3
(July 1992)

UNITED STATES
DEPARTMENT OF THE INTERIOR
BUREAU OF LAND MANAGEMENT

SUBMIT IN TRIPLICATE
(Other instructions on
reverse side)

FORM APPROVED
OMB NO. 1004-0136
Expires February 28, 1995

APPLICATION FOR PERMIT TO DRILL OR DEEPEN

1a. TYPE OF WORK

Drill ☒

Deepen ☐

b. TYPE OF WELL

Oil Well ☐

Gas Well ☒

Other ☐

Single Zone ☐

Multiple Zone ☐

2. NAME OF OPERATOR

Mallon Oil Company

3. ADDRESS AND TELEPHONE NO.

P.O. Box 2797

Durango, CO 81302

(970) 382-9100

4. LOCATION OF WELL (Report location clearly and in accordance with any State requirements.)

At surface

985' FNL and 703' FWL (NW/NW) Unit D

At proposed prod. zone 985' FNL and 703' FWL (NW/NW) Unit D

14. DISTANCE IN MILES AND DIRECTION FROM NEAREST TOWN OR POST OFFICE *

50 miles east of Bloomfield, New Mexico

15. DISTANCE FROM PROPOSED *

LOCATION TO NEAREST

4270'

PROPERTY OR LEASE LINE, FT.

(Also to nearest drlg. unit line, if any)

18. DISTANCE FROM PROPOSED LOCATION*

TO NEAREST WELL, DRILLING, COMPLETED,

100'

OR APPLIED FOR, ON THIS LEASE, FT.

21. ELEVATIONS (SHOW WHETHER DF, RT, GR, Etc.)

7123' GR

16. NO. OF ACRES IN LEASE

2,393

17. NO. OF ACRES ASSIGNED

TO THIS WELL

160

19. PROPOSED DEPTH

1800'

20. ROTARY OR CABLE TOOLS

Rotary

22. APPROX DATE WORK WILL START

08/01/99

23. PROPOSED CASING AND CEMENTING PROGRAM

SIZE OF HOLE	GRADE, SIZE OF CASING	WEIGHT PER FOOT	SETTING DEPTH	QUANTITY OF CEMENT
12-1/4"	8-5/8"	24#	160-500'	Circulate to surface
7-7/8"	4-1/2"	14.7#	1800'	300 sks 50/50 Poz w/additives

Mallon Oil Co. proposes to drill this well to an approximate TD of 1800' in the San Jose formation. This well is placed on an existing well pad. Some additional pad extension may be required. The Jicarilla Oil and Gas Administration has waived any necessity of re-onsiting the well pad as long as any required archaeology survey is submitted. Environmental assessment was previously submitted under the initial well APD. If productive, 4-1/2" casing will be cemented at TD. If non-productive, the well will be plugged and abandoned in a manner consistent with Federal regulations. Specific programs as per on-shore Oil and Gas Order No. 1 are outlined in the following attachments:

Drilling Program

Exhibit 1: Blow Out Preventor Equipment/Plan

Exhibit A: Location and Elevation Plat

Exhibit B: Roads and Pipelines

Exhibit C: One Mile Radius Map

Exhibit D: Drilling Site Layout

Exhibit E: Production Facilities

Exhibit F: H2S Contingency Plan

Exhibit G: Archaeology Report

IN ABOVE SPACE DESCRIBE PROPOSED PROGRAM: If proposal is to deepen, give data on present productive zone and proposed new productive zone. If proposal is to drill or deepen directionally, give pertinent data on subsurface locations and measured and true vertical depths. Give blowout preventer program, if any.

24.

SIGNED:

Terry Lindeman

TITLE: Operations Superintendent

DATE

07/05/99

(This space for Federal or State office use)

PERMIT NO.

APPROVAL DATE

Application approval does not warrant or certify that the applicant holds legal or equitable title to those rights in the subject lease which would entitle the applicant to conduct operations thereon.

CONDITIONS OF APPROVAL, IF ANY:

APPROVED BY

James R. Leinick

TITLE

Asst Field Mgr

DATE

SEP 24

*See Instructions On Reverse Side

Title 18 U.S.C. Section 1001, makes it a crime for any person knowingly and willfully to make to any department or agency of the United States any false, fictitious or fraudulent statements or representations as to any matter within its jurisdiction.

CONFIDENTIAL

NSL-4355 @

DISTRICT II
P.O. Drawer DD, Artesia, N.M. 88211-0719

DISTRICT III
1000 Rio Brazos Rd., Aztec, N.M. 87410

DISTRICT IV
PO Box 2088, Santa Fe, NM 87504-2088

Energy, Minerals & Natural Resources Department

OIL CONSERVATION DIVISION

P.O. Box 2088
Santa Fe, NM 87504-2088

Form C-102
Revised February 21, 1994
Instructions on back
Submit to Appropriate District Office
State Lease - 4 Copies
Fee Lease - 3 Copies

☐ AMENDED REPORT

WELL LOCATION AND ACREAGE DEDICATION PLAT

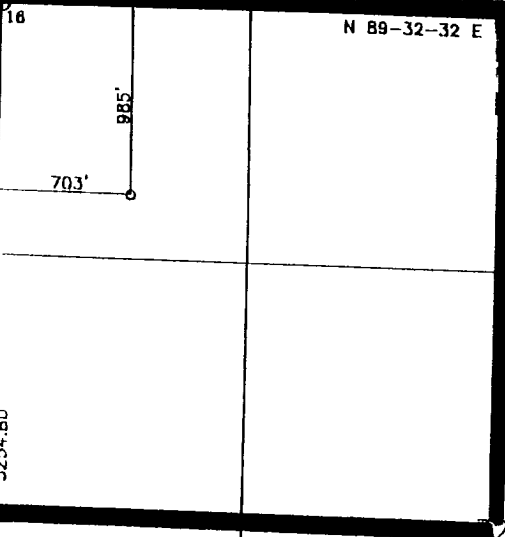
*API Number 30-039-26-228		*Pool Code 96822	*Pool Name Cabresto Canyon; San Jose ext.	
*Property Code 24939	*Property Name JICARILLA 464 S.J.		*Well Number 2	
*GRID No. 13925	*Operator Name MALLON OIL COMPANY		*Elevation 7123	

10 Surface Location									
UL or lot no.	Section	Township	Range	Lot Idn	Feet from the	North/South line	Feet from the	East/West line	County
D	32	30-N	3-W		985	NORTH	703	WEST	RIO ARRIBA

11 Bottom Hole Location If Different From Surface									
UL or lot no.	Section	Township	Range	Lot Idn	Feet from the	North/South line	Feet from the	East/West line	County
12 Dedicated Acres 160		13 Joint or Infill		14 Consolidation Code		15 Order No.			

NO ALLOWABLE WILL BE ASSIGNED TO THIS COMPLETION UNTIL ALL INTERESTS HAVE BEEN CONSOLIDATED
OR A NON-STANDARD UNIT HAS BEEN APPROVED BY THE DIVISION

MARKED STONE

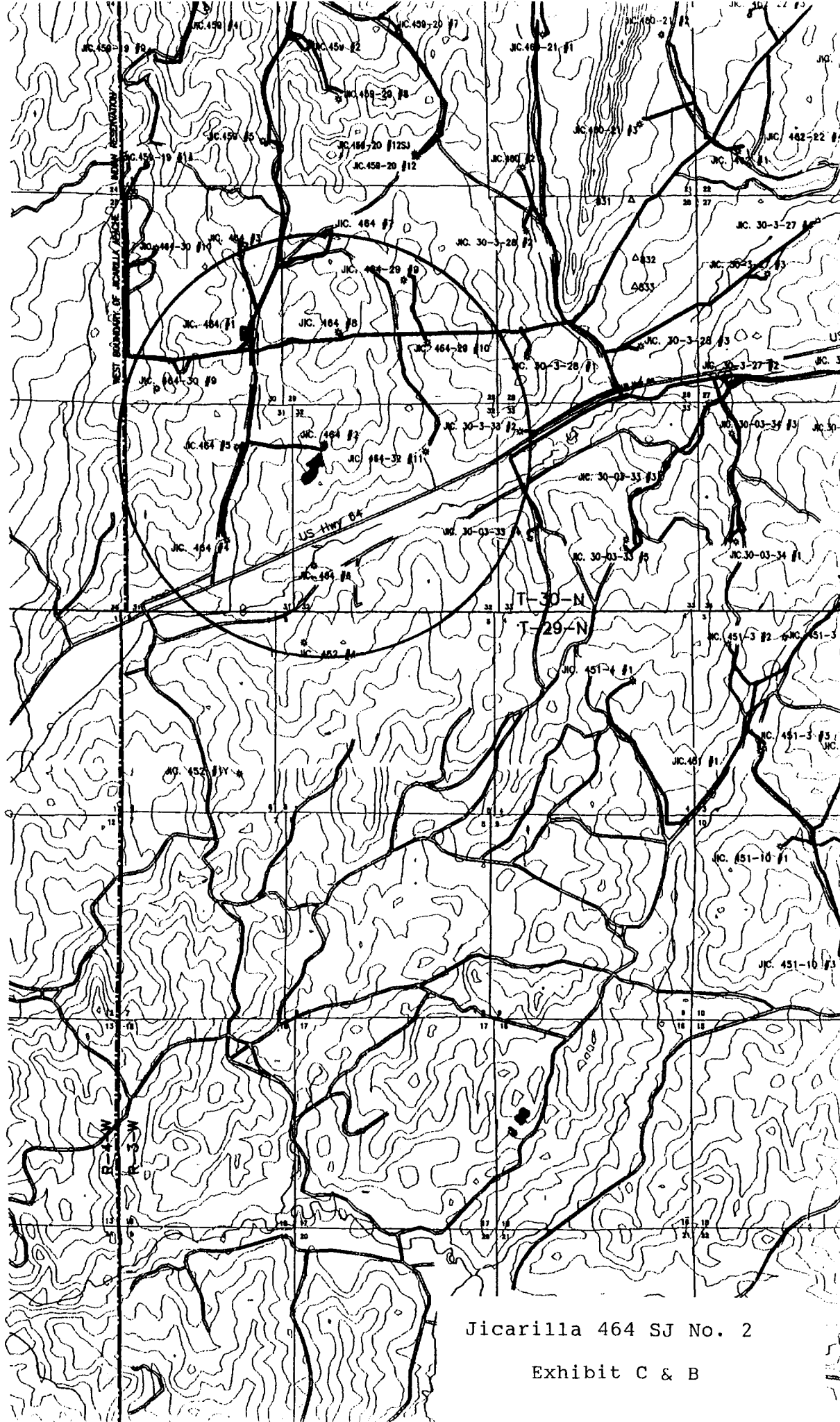


1917
G.L.O. B.C.

17	OPERATOR CERTIFICATION
I hereby certify that the information contained herein is true and complete to the best of my knowledge and belief.	
Signature Terry Lindeman	
Printed Name Operations Superintendent	
Title July 5, 1999	
Date	

18	SURVEYOR CERTIFICATION
I hereby certify that the well location shown on this plat was plotted from field notes of actual surveys made by me or under my supervision, and that the same is true and correct to the best of my belief.	
7-2/1999	
Date of Survey	
Signature and Seal of Professional Surveyor 8894	
Certificate Number	

MARKED
STONE



Jicarilla 464 SJ No. 2

Exhibit C & B