

CONFIDENTIAL

Form 3160-3  
(July 1992)UNITED STATES  
DEPARTMENT OF THE INTERIOR  
BUREAU OF LAND MANAGEMENTSUBMIT IN TRIPLICATE  
(Other instructions on  
reverse side)FORM APPROVED  
OMB NO. 1004-0136  
Expires February 28, 1995

09 JUL 27 APPLICATION FOR PERMIT TO DRILL OR DEEPEN

1a. TYPE OF WORK ☒ Deepen ☐

b. TYPE OF WELL ☒ Oil Well ☐ Gas Well ☐ Other ☐ Single Zone ☐ Multiple Zone ☐

2. NAME OF OPERATOR **Mallon Oil Company**

3. ADDRESS AND TELEPHONE NO.  
**P.O. Box 2797  
Durango, CO 81302 (970) 382-9100**

4. LOCATION OF WELL (Report location clearly and in accordance with any State requirements.)  
At surface **1733' FNL and 286' FEL (SE/NE) Unit H**  
At proposed prod. zone **1733' FNL and 286' FEL (SE/NE) Unit H**

14. DISTANCE IN MILES AND DIRECTION FROM NEAREST TOWN OR POST OFFICE \*  
**50 miles east of Bloomfield, New Mexico**

15. DISTANCE FROM PROPOSED \*  
LOCATION TO NEAREST **3850'**  
PROPERTY OR LEASE LINE, FT.  
(Also to nearest drlg. unit line, if any)

16. NO. OF ACRES IN LEASE  
**2,560**

17. NO. OF ACRES ASSIGNED  
TO THIS WELL  
**180 146.73**

18. DISTANCE FROM PROPOSED LOCATION \*  
TO NEAREST WELL, DRILLING, COMPLETED,  
OR APPLIED FOR, ON THIS LEASE, FT. **100'**

19. PROPOSED DEPTH  
**1800'**

20. ROTARY OR CABLE TOOLS  
**Rotary**

21. ELEVATIONS (SHOW WHETHER DF, RT, GR, Etc.) **7095' GR**

22. APPROX. DATE WORK WILL START **09/01/99**

23. PROPOSED CASING AND CEMENTING PROGRAM

SIZE OF HOLE	GRADE, SIZE OF CASING	WEIGHT PER FOOT	SETTING DEPTH	QUANTITY OF CEMENT
12-1/4"	8-5/8"	24#	165' 500'	Circulate to surface
7-7/8"	4-1/2"	14.7#	1800'	300 sks 50/50 Poz w/additive

Mallon Oil Co. proposes to drill this well to an approximate TD of 1800' in the San Jose formation. This well is placed on an existing well pad. Some additional pad extension may be required. The Jicarilla oil and Gas Administration has waived any necessity of re-onsiting the well pad as long as any required archaeology survey is submitted. Environmental assessment was previously submitted under the initial well APD. If productive, 4-1/2" casing will be cemented at TD. If non-productive, the well will be plugged and abandoned in a manner consistent with Federal regulations. Specific programs as per on-shore Oil and Gas Order No. 1 are outlined in the following attachments:

Drilling Program

Exhibit 1: Blow Out Preventor Equipment/Plan  
Exhibit A: Location and Elevation Plat  
Exhibit B: Roads and Pipelines  
Exhibit C: One Mile Radius Map

Exhibit D: Drilling Site Layout  
Exhibit E: Production Facilities  
Exhibit F: H2S Contingency Plan  
Exhibit G: Archaeology Report

IN ABOVE SPACE DESCRIBE PROPOSED PROGRAM: If proposal is to deepen, give data on present productive zone and proposed new productive zone. If proposal is to drill or deepen directionally, give pertinent data on subsurface locations and measured and true vertical depths. Give blowout preventer program, if any.

24. SIGNED: Terry Lindeman TITLE: Operations Superintendent DATE: 07/26/99

(This space for Federal or State office use)

PERMIT NO

APPROVAL DATE

Application approval does not warrant or certify that the applicant holds legal or equitable title to those rights in the subject lease which would entitle the applicant to conduct operations thereon.

CONDITIONS OF APPROVAL, IF ANY:

APPROVED BY

TITLE

DATE

\*See Instructions On Reverse Side

Title 18 U.S.C. Section 1001, makes it a crime for any person knowingly and willfully to make to any department or agency of the United States any false, fictitious or fraudulent statements or representations as to any matter within its jurisdiction.

CONFIDENTIAL

NS6-4355 (2)

DISTRICT I  
P.O. Box 1980, Hobbs, N.M. 88241-1980

DISTRICT II  
P.O. Drawer DD, Artesia, N.M. 88211-0719

DISTRICT III  
1000 Rio Brezcos Rd., Aztec, N.M. 87410

DISTRICT IV  
PO Box 2088, Santa Fe, NM 87504-2088

State of New Mexico  
Energy, Minerals & Natural Resources Department

OIL CONSERVATION DIVISION  
P.O. Box 2088  
Santa Fe, NM 87504-2088

Form C-102  
Revised February 21, 1994  
Instructions on back  
Submit to Appropriate District Office  
State Lease - 4 Copies  
Fee Lease - 3 Copies

☐ AMENDED REPORT

WELL LOCATION AND ACREAGE DEDICATION PLAT

<sup>1</sup> API Number 30-039-26236	<sup>2</sup> Pool Code 96822	<sup>3</sup> Pool Name Cabresto Canyon; San Jose ext.
<sup>4</sup> Property Code 24998	<sup>5</sup> Property Name JICARILLA 458SJ	<sup>6</sup> Well Number 3
<sup>7</sup> OCRID No. 13925	<sup>8</sup> Operator Name MALLON OIL COMPANY	<sup>9</sup> Elevation 7095'

<sup>10</sup> Surface Location

UL or lot no.	Section	Township	Range	Lot Idn	Feet from the	North/South line	Feet from the	East/West line	County
H	7	30-N	3-W		1733	NORTH	286	EAST	RIO ARRIBA

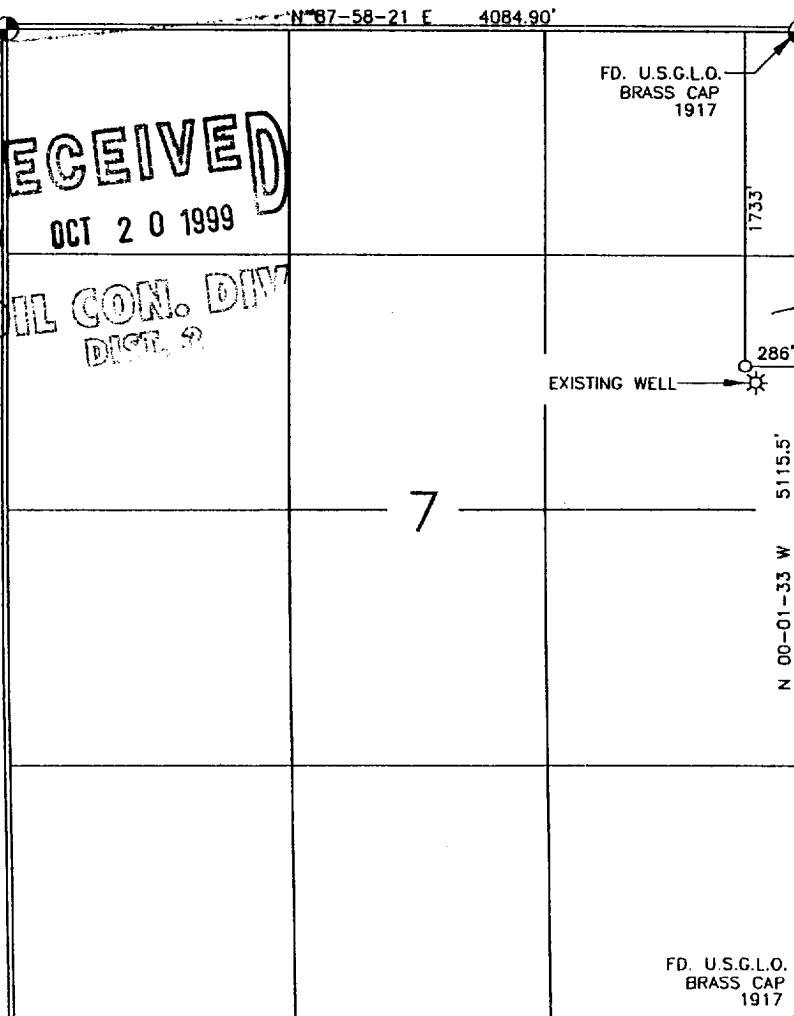
<sup>11</sup> Bottom Hole Location If Different From Surface

UL or lot no.	Section	Township	Range	Lot Idn	Feet from the	North/South line	Feet from the	East/West line	County
<sup>12</sup> Dedicated Acres 142.73	<sup>13</sup> Joint or Infill	<sup>14</sup> Consolidation Code	<sup>15</sup> Order No.						

NO ALLOWABLE WILL BE ASSIGNED TO THIS COMPLETION UNTIL ALL INTERESTS HAVE BEEN CONSOLIDATED  
OR A NON-STANDARD UNIT HAS BEEN APPROVED BY THE DIVISION

FD. U.S.G.L.O.  
BRASS-CAP  
1917

RECEIVED  
OCT 20 1999  
OIL CON. DIV  
DIST. 2



17 OPERATOR CERTIFICATION

I hereby certify that the information contained herein is true and complete to the best of my knowledge and belief

Signature

Terry Lindeman  
Printed Name

Operations Superintendent  
Title

July 26, 1999  
Date

18 SURVEYOR CERTIFICATION

I hereby certify that the well location shown on this plat was plotted from field notes of actual surveys made by me or under my supervision, and that the same is true and correct to the best of my belief

Date of Survey

Signature of Professional Surveyor



8894

Certificate Number

