

CONFIDENTIAL

Form 3160-3
(July 1992)UNITED STATES
DEPARTMENT OF THE INTERIOR
BUREAU OF LAND MANAGEMENTSUBMIT IN TRIPLICATE
(Other instructions on
reverse side)FORM APPROVED
OMB NO. 1004-0136
Expires February 28, 1995

APPLICATION FOR PERMIT TO DRILL OR DEEPEN

1a. TYPE OF WORK

Drill ☒Deepen ☐

b. TYPE OF WELL

Oil Well ☐Gas Well ☒Other ☐Single Zone ☐Multiple Zone ☐

2. NAME OF OPERATOR

Mallon Oil Company

3. ADDRESS AND TELEPHONE NO.

P.O. Box 2797

Durango, CO 81302 (970) 382-9100

4. LOCATION OF WELL (Report location clearly and in accordance with any State requirements.)

At surface 1236' FSL and 449' FEL (SE/SE) Unit P

At proposed prod. zone 1236' FSL and 449' FEL (SE/SE) Unit P

14. DISTANCE IN MILES AND DIRECTION FROM NEAREST TOWN OR POST OFFICE *

50 miles east of Bloomfield, New Mexico

15. DISTANCE FROM PROPOSED *

LOCATION TO NEAREST 1156'

PROPERTY OR LEASE LINE, FT.

(Also to nearest drlg. unit line, if any)

18. DISTANCE FROM PROPOSED LOCATION*

TO NEAREST WELL, DRILLING, COMPLETED, 100'

OR APPLIED FOR, ON THIS LEASE, FT.

21. ELEVATIONS (SHOW WHETHER DF, RT, GR, Etc.) 7259' GR

16. NO. OF ACRES IN LEASE

2,267

17. NO. OF ACRES ASSIGNED
TO THIS WELL

184/160

19. PROPOSED DEPTH

1800'

20. ROTARY OR CABLE TOOLS

Rotary

22. APPROX. DATE WORK WILL START 08/01/99

23. PROPOSED CASING AND CEMENTING PROGRAM

SIZE OF HOLE	GRADE, SIZE OF CASING	WEIGHT PER FOOT	SETTING DEPTH	QUANTITY OF CEMENT
12-1/4"	8-5/8"	24#	500'	Circulate to surface
7-7/8"	4-1/2"	14.7#	1800'	300 sks 50/50 Poz w/additives

Mallon Oil Co. proposes to drill this well to an approximate TD of 1800' in the San Jose formation. This well is placed on an existing well pad. Some additional pad extension may be required. The Jicarilla Oil and Gas Administration has waived any necessity of re-onsiting the well pad as long as any required archaeology survey is submitted. Environmental assessment was previously submitted under the initial well APD. If productive, 4-1/2" casing will be cemented at TD. If non-productive, the well will be plugged and abandoned in a manner consistent with Federal regulations. Specific programs as per on-shore Oil and Gas Order No. 1 are outlined in the following attachments:

Exhibit 1: Blow Out Preventor Equipment/Plan

Exhibit A: Location and Elevation Plat

Exhibit B: Roads and Pipelines

Exhibit C: One Mile Radius Map

Exhibit D: Drilling Site Layout

Exhibit E: Production Facilities

Exhibit F: H2S Contingency Plan

Exhibit G: Archaeology Report

IN ABOVE SPACE DESCRIBE PROPOSED PROGRAM: If proposal is to deepen, give data on present productive zone and proposed new productive zone. If proposal is to drill or deepen directionally, give pertinent data on subsurface locations and measured and true vertical depths. Give blowout preventer program, if any.

24.

SIGNED: Terry LindemanTITLE: Operations SuperintendentDATE: 07/05/99

(This space for Federal or State office use)

PERMIT NO. _____

APPROVAL DATE _____

Application approval does not warrant or certify that the applicant holds legal or equitable title to those rights in the subject lease which would entitle the applicant to conduct operations thereon.

CONDITIONS OF APPROVAL, IF ANY:

APPROVED BY: S/Dave SitzlerTITLE: Asst Field MgrDATE: 11/1/95

*See Instructions On Reverse Side

Title 18 U.S.C. Section 1001, makes it a crime for any person knowingly and willfully to make to any department or agency of the United States any false, fictitious or fraudulent statements or representations as to any matter within its jurisdiction.

NSL-4355 (9)

CONFIDENTIAL

OIL CONSERVATION DIVISION

P.O. Box 2088
Santa Fe, NM 87504-2088

WELL LOCATION AND ACREAGE DEDICATION PLAT

26242	*Pool Code 96822	*Pool Name Cabresto Canyon; San Jose ext.
*Property Name JICARILLA 459 S.J.		*Well Number #5
*Operator Name MALLON OIL COMPANY		*Elevation 7259

¹⁰ Surface Location

Township 30-N	Range 3-W	Lot Idn	Feet from the 1236	North/South line SOUTH	Feet from the 449	East/West line EAST	County RIO ARRIBA
------------------	--------------	---------	-----------------------	---------------------------	----------------------	------------------------	----------------------

¹¹ Bottom Hole Location If Different From Surface

Township	Range	Lot Idn	Feet from the	North/South line	Feet from the	East/West line	County
----------	-------	---------	---------------	------------------	---------------	----------------	--------

or Infill	*Consolidation Code	*Order No.
-----------	---------------------	------------

WILL BE ASSIGNED TO THIS COMPLETION UNTIL ALL INTERESTS HAVE BEEN CONSOLIDATED
OR A NON-STANDARD UNIT HAS BEEN APPROVED BY THE DIVISION

16	17 OPERATOR CERTIFICATION I hereby certify that the information contained herein is true and complete to the best of my knowledge and belief Signature <u>Terry Lindeman</u> Printed Name Operations Superintendent Title July 5, 1999 Date
18 SURVEYOR CERTIFICATION I hereby certify that the well location shown on this plat was plotted from field notes of actual surveys made by me or under my supervision, and that the same is true and correct to the best of my belief. Date of Survey <u>7-21-99</u> Signature and Seal of Professional Surveyor <u>ROY A. BUSH</u> 8894 Certificate Number	

1817 G.L.O. B.C.

1236'

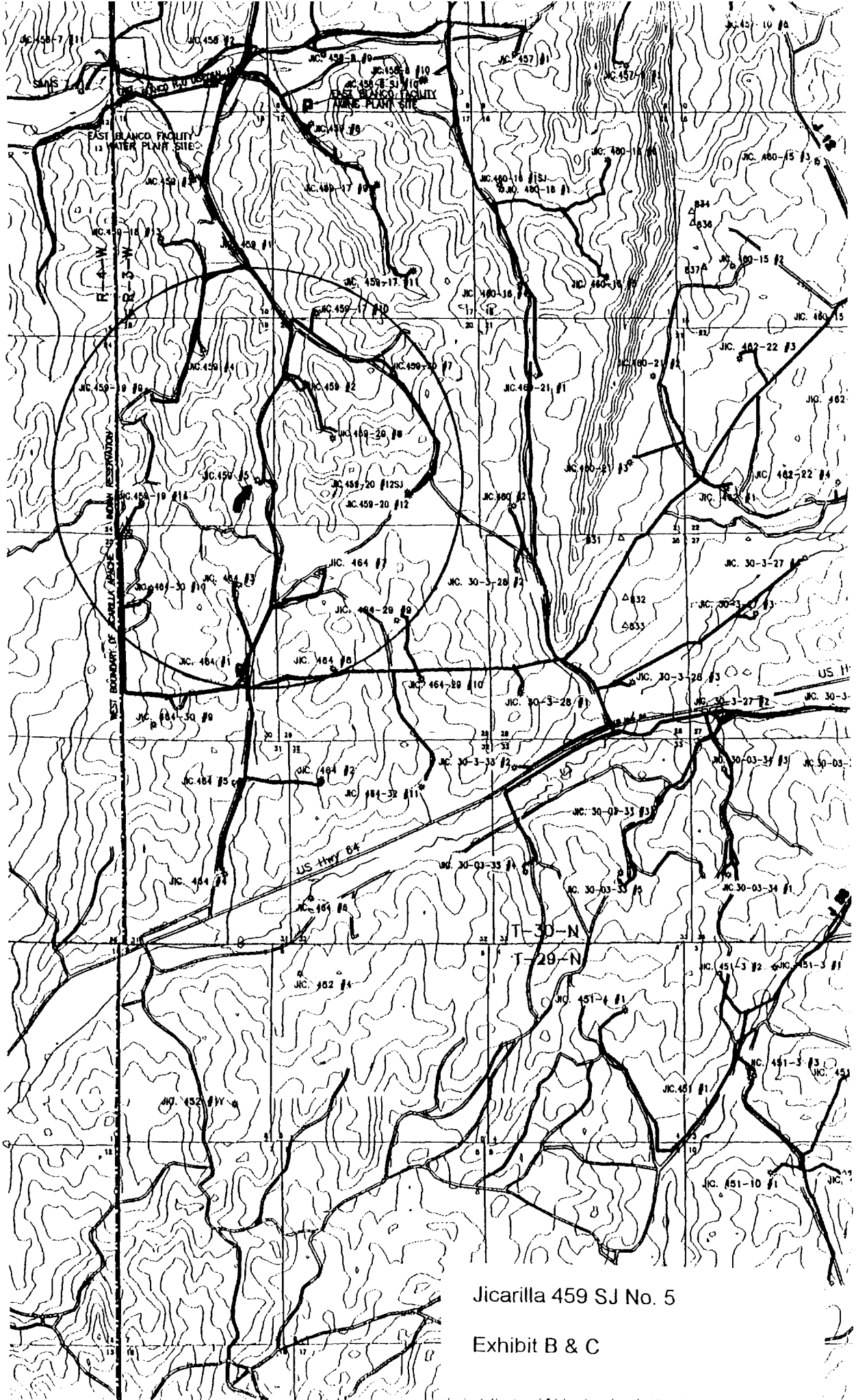
449'

2643.1'

N 00-07-23 E

N 88-45-31 W 4064.2'

1817 G.L.O. B.C.



Jicarilla 459 SJ No. 5

Exhibit B & C