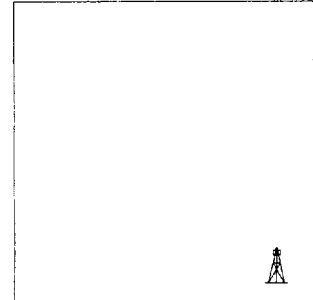


**Softrock Geological Services, Inc.**  
 591 County Rd. 233 Durango, CO 81301  
 (970) 247- 8868, fax # 247 - 5108

30-039-26302  
 M

### WELL INFORMATION

COMPANY: Phillips Petroleum Company  
 WELL NAME: San Juan 30-5 Unit No. 266 (Kfc)  
 LOCATION: 665' FSL & 670 FWL Sec. 10 - T30N - R5W  
 Rio Arriba Co, NM  
 ELEVATION: 6417' GL 6432' KB  
 FIELD: Fruitland Formation  
 INTERVAL LOGGED: 3023' - 3177' DATE LOGGED: 3/9/2000  
 CONTRACTOR: Key 53, David Green, Co. Man  
 SPUD DATE: 3/3/2000  
 WELLSITE GEOLOGISTS: Peter D. Falk & Paul Rappaport  
 GAS INSTRUMENTATION: FID Chromatograph & FID Total Gas Detector



Conglomerate



Sandstone



Siltstone



Shale



Coal



Bentonite

HOLE SIZES: 12 1/4 to 238'  
 8 3/4 to 3023"  
 6 1/4 to TD (3177')  
 CASING SIZES: 9 5/8 to 233'  
 7 to 2023'

MUD TYPES: Air/Mist

#### Abbreviations

Ck - Filter Cake  
 CG - Connection Gas  
 DTG - Down Time Gas  
 NB - New Bit  
 RR - Rerun  
 NR - No Returns  
 pH - pH of Mud  
 PP - Pump Pressure  
 RPM - Rotary Speed  
 SPM - Pump Strokes  
 TG - Trip Gas  
 Vis - Viscosity of Mud  
 WL - Water Loss of Mud  
 WOB - Weight on Bit  
 Wt - Weight of Mud

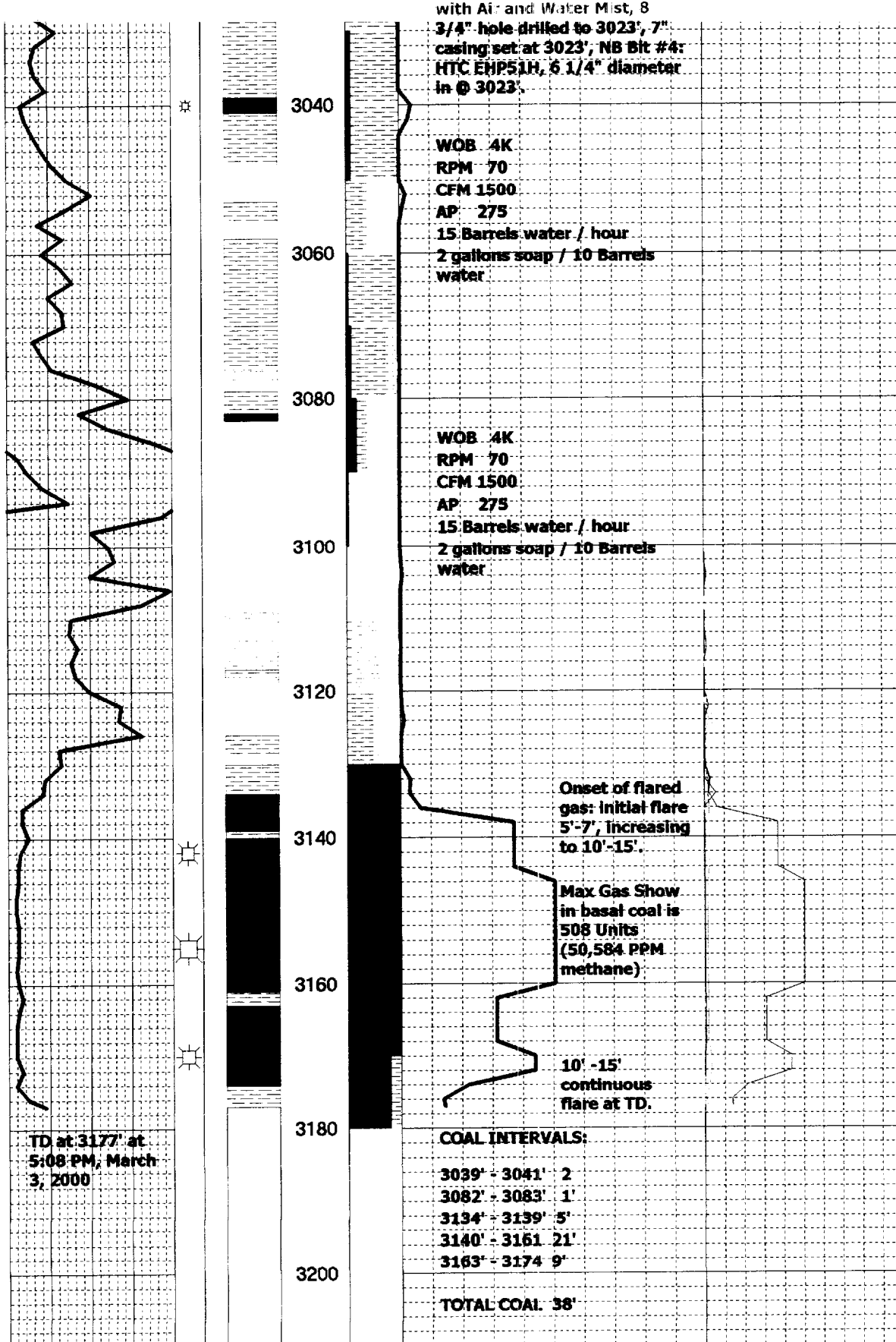
#### Shows

Oil \* \* \*  
 Gas \* \* \*  
 Poor Fair Good

#### Special Symbols

- Core  
 - Slide  
 - Desorption Can

DRILL RATE			SHOWS CORE - CANS - SLIDE	LITHOLOGY	DEPTH	% LITHOLOGY	TOTAL GAS UNITS	C1 - C4 PPM		DESCRIPTIONS		
0	Gamma API Units      300						1 Unit Gas = 100 PPM Hydrocarbons		0	Methane	100,000	VERTICAL SCALE: 5" = 100'
							0                      TOTAL GAS                      1000		0	Ethane	10,000	
	ROP						0                      C1/(C1-C4)                      1.0		0	Propane	10,000	
	Minutes Per Foot								0	Butane	10,000	
0	4	8										
					3020							
							10 ft. sample interval. Drilling			Shale: mostly light to medium gray, some gray		



brown, trace dark gray, platy, soft, varies from slight to moderately calcareous, common carbonaceous material seen as flakes and streaks, silty in part, waxy to earthy texture. Shale is interbedded from 3039' - 3041' with a thin coal stringer. Coal is poorly seen in samples (mostly turned into dust by bit bypassing sample collector); mostly dull brown black, earthy texture, no observed cleating.

Sandstone: cream to light gray, ranges from very fine grained (lower) to fine grained (lower), well sorted, mostly sub-rounded, well cemented with calcite and some inter-granular white clay, also larger white clay particles suggesting authogenic clay, grain clusters look tight, no fluorescence, cut or sample show.

Coal: mostly semi-bright intermediate lustrous (60%) to bright black vitreous material (35%) with only minor amounts of flat gray black coal (5%) - Vitreous material decreases slightly below 3160'. Coal is banded and micro-banded, blocky, well cleated with common planer cleat surfaces and occasionally intersecting (mostly right angles) cleat faces. Secondary mineralization consists of numerous small light brown platy calcite fragments and occasional calcite film seen on coal cutting cleat faces. Overall, a very good coal