

UNITED STATES
DEPARTMENT OF THE INTERIOR
BUREAU OF LAND MANAGEMENT

APPLICATION FOR PERMIT TO DRILL OR DEEPEN

1a. TYPE OF WORK

DRILL ☒

DEEPEN ☐

b. TYPE OF WELL

OIL
WELL ☐

GAS
WELL ☒

OTHER

SINGLE
ZONE ☐

MULTIPLE
ZONE ☒

2. NAME OF OPERATOR

ENERGEN RESOURCES CORPORATION

3. ADDRESS AND TELEPHONE NO.

2198 Bloomfield Highway; Farmington, NM 87401

4. LOCATION OF WELL (Report location clearly and in accordance with any State requirements*)

At surface

1095' FNL, 75' FWL

At proposed prod. zone

14. DISTANCE IN MILES AND DIRECTION FROM NEAREST TOWN OR POST OFFICE*

Ten (10) Miles NE of Gobernador, New Mexico

15. DISTANCE FROM PROPOSED*

LOCATION TO NEAREST

PROPERTY OR LEASE LINE, FT.

(Also to nearest drlg. unit line, if any) 75'

18. DISTANCE FROM PROPOSED LOCATION*

TO NEAREST WELL, DRILLING, COMPLETED,

OR APPLIED FOR, ON THIS LEASE, FT. 1200'

16. NO. OF ACRES IN LEASE

2560

17. NO. OF ACRES ASSIGNED

TO THIS WELL

160/320 w/h

19. PROPOSED DEPTH

7162'

20. ROTARY OR CABLE TOOLS

Rotary

21. ELEVATIONS (Show whether DF, RT, GR, etc.)

7460' GR

22. APPROX. DATE WORK WILL START*

23. PROPOSED CASING AND CEMENTING PROGRAM

SIZE OF HOLE	GRADE SIZE OF CASING	WEIGHT PER FOOT	SETTING DEPTH	QUANTITY OF CEMENT
12 1/4"	9 5/8"	32.30#	200'	130 cu. ft., circ. to surface
8 3/4"	7"	20 & 23#	4780'	1079 cu. ft., 2 stages
6 1/8"	4 1/2"	10.5#	4630-7162'	358 cu. ft., circ. to intermediate

An application to dual complete is being submitted to NMOCD.

Selectively perforate and sand water fracture the Pictured Cliffs and Mesaverde Formations.

This gas is dedicated.

A Williams Field Service Pipeline ROW Plat is attached.

THIS IS AN EXPIDITED APD.

This action is subject to technical and
procedural review pursuant to 43 CFR 3165.3
and appeal pursuant to 43 CFR 3165.4.

DRILLING OPERATIONS AUTHORIZED ARE
SUBJECT TO COMPLIANCE WITH ATTACHED
"GENERAL REQUIREMENTS"

IN ABOVE SPACE DESCRIBE PROPOSED PROGRAM: If proposal is to deepen, give data on present productive zone and proposed new productive zone. If proposal is to drill or deepen directionally, give pertinent data on subsurface locations and measured and true vertical depths. Give blowout preventer program, if any.

24. SIGNED [Signature] TITLE Production Superintendent

DATE 1/19/00

(This space for Federal or State office use)

PERMIT NO. _____

APPROVAL DATE _____

Application approval does not warrant or certify that the applicant holds legal or equitable title to those rights in the subject lease which would entitle the applicant to conduct operations thereon.

CONDITIONS OF APPROVAL, IF ANY:

HOLD C104 FOR E. Blanco PC NSL

APR 28 2000

APPROVED BY

/s/ Charlie Beecham

TITLE

DATE

*See Instructions On Reverse Side

Title 18 U.S.C. Section 1001, makes it a crime for any person knowingly and willfully to make to any department or agency of the United States any false, fictitious or fraudulent statements or representations as to any matter within its jurisdiction.

NMOCD

District I
PO Box 1950, Hobbs, NM 88241-1980

State of New Mexico
Energy, Minerals & Natural Resources Department

Form C-102
Revised February 21, 1994

District II
PO Drawer 00, Artesia, NM 88211-0719

Instructions on back
Submit to Appropriate District Office
State Lease - 4 Copies
Fee Lease - 3 Copies

District III
1000 Rio Brazos Rd., Aztec, NM 87410

OIL CONSERVATION DIVISION
PO Box 2088
Santa Fe, NM 87504-2088

District IV
PO Box 2088, Santa Fe, NM 87504-2088

☐ AMENDED REPORT

WELL LOCATION AND ACREAGE DEDICATION PLAT

*API Number 30-039-26320	*Pool Code 72400-72319	*Pool Name East Blanco Pictured Cliffs - Blanco Mesaverde
*Property Code 21994	*Property Name SAN JUAN 30-4 UNIT	*Well Number 44
*OGRID No. 162928	*Operator Name ENERGEN RESOURCES CORPORATION	*Elevation 7460'

¹⁰ Surface Location

UL or lot no. 0	Section 20	Township 30N	Range 4W	Lot Idn	Feet from the 1095	North/South line NORTH	Feet from the 75	East/West line WEST	County RIO ARriba
--------------------	---------------	-----------------	-------------	---------	-----------------------	---------------------------	---------------------	------------------------	----------------------

¹¹ Bottom Hole Location If Different From Surface

UL or lot no.	Section	Township	Range	Lot Idn	Feet from the	North/South line	Feet from the	East/West line	County
---------------	---------	----------	-------	---------	---------------	------------------	---------------	----------------	--------

¹² Dedicated Acres 160/320	¹³ Joint or Infill	¹⁴ Consolidation Code	¹⁵ Order No.
--	-------------------------------	----------------------------------	-------------------------

NO ALLOWABLE WILL BE ASSIGNED TO THIS COMPLETION UNTIL ALL INTERESTS HAVE BEEN CONSOLIDATED
OR A NON-STANDARD UNIT HAS BEEN APPROVED BY THE DIVISION

<div><p>¹⁶</p><p>1095'</p><p>75'</p><p>5280.00'</p><p>5278.68'</p></div>	<div><p>¹⁷ OPERATOR CERTIFICATION</p><p>I hereby certify that the information contained herein is true and complete to the best of my knowledge and belief.</p><p></p><p>Signature Gary Brink Printed Name Production Superintendent Title 1/19/00 Date</p></div> <div><p>¹⁸ SURVEYOR CERTIFICATION</p><p>I hereby certify that the well location shown on this plat was plotted from field notes of actual surveys made by me or under my supervision, and that the same is true and correct to the best of my belief.</p><p>NOVEMBER 18, 1999 Date of Survey</p><p> Signature and Seal of Professional Surveyor</p><p> Certificate 6857</p></div>
---	---

BOP SPECIFICATIONS:

An 11" 2000 psi minimum double gate BOP stack (Figure 1) will be used following nipple up of casing head. During air drilling operations, a Shaffer Type 50 or equivalent rotating head will be installed on top of the stack. A 2" nominal, 2000 psi minimum choke manifold will be used.

CEMENTING:

9 5/8" surface casing - Cement with 110 sks Class B Cement with 1/4# flocele/sk and 2% calcium chloride (130 cu. ft. of slurry, 100% excess to circulate to surface). WOC 12 hrs. Test casing to 600# for 30 minutes.

Texas Pattern Guide Shoe on bottom. 3 bow type centralizers spaced throughout the string.

7" intermediate casing:

First Stage – cement with 185 sks Class B with 2% Calcium Chloride, 10% gilsonite and 1/4# flocele/sks (233 cu. ft. of slurry, 50% excess to circulate stage tool @ 3750).

Second Stage - cement with 375 sks 65/35 Class B Poz with 6% gel, 2% calcium chloride, 10% gilsonite, and 1/4# flocele/sk. Tail with 100 sks Class B w/2% calcium chloride, 10% gilsonite and 1/4# flocele/sk. (846 cu. ft. of slurry, 50% excess to circulate to surface). WOC 12 hrs. If cement does not circulate, run temperature survey in 8 hrs. to determine TOC. Test casing to 1200 psi for 30 minutes.

Cement nose guide shoe on bottom with a self-fill insert float valve on top of shoe joint. 10 bow spring centralizers spaced every 3rd joint off bottom. One bow spring centralizer below and eight above stage tool at 3750. Two turbolating centralizers at the base of the Ojo Alamo.

4 1/2" Production Liner

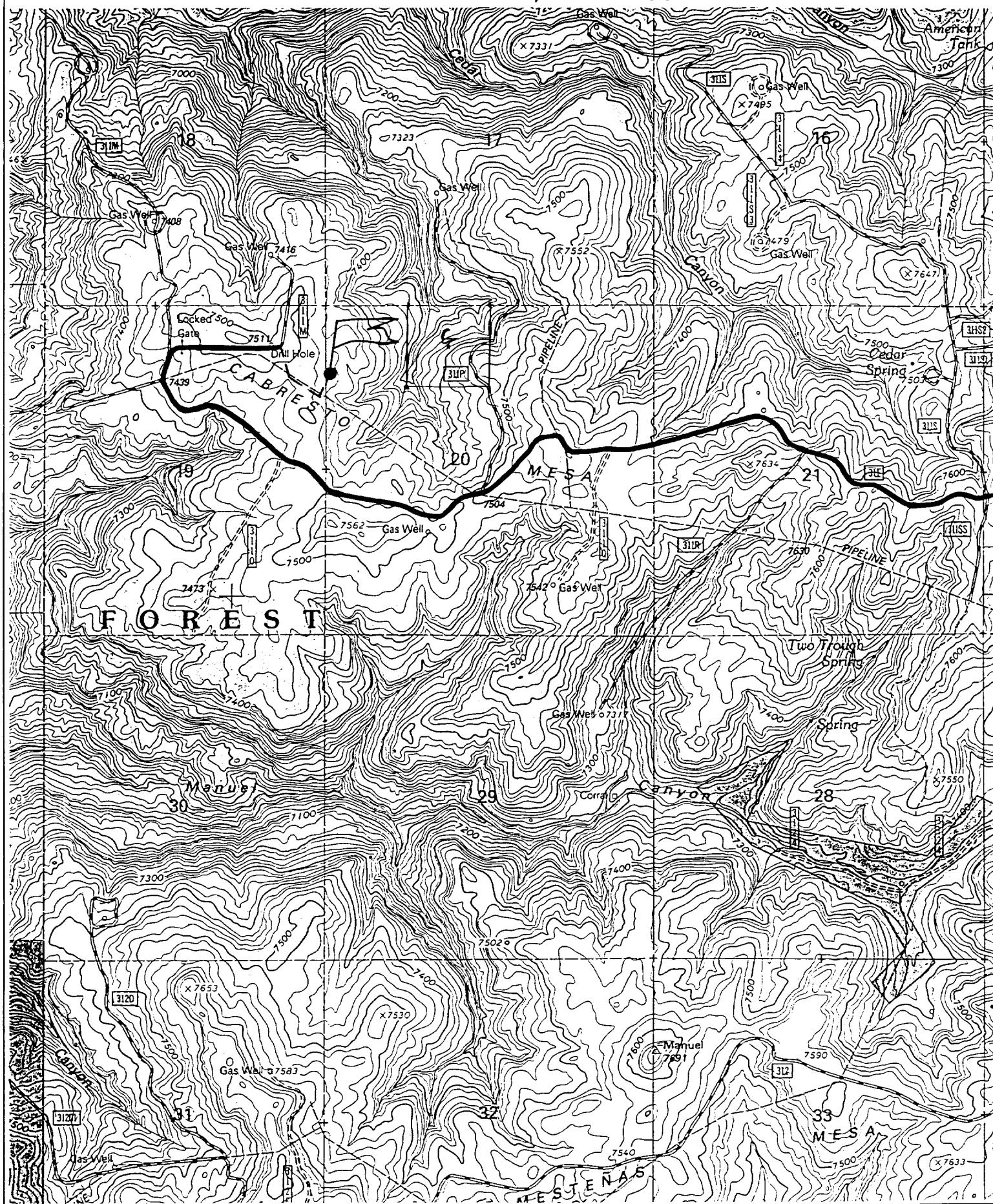
Cement with 285 sks 50/50 poz with 2% gel, 5 PPS gilsonite, .4% halad - 9 and 1/4# flocele/sk (358 cu. ft., 50% excess to tie into intermediate casing string). WOC 18 hrs prior to completion.

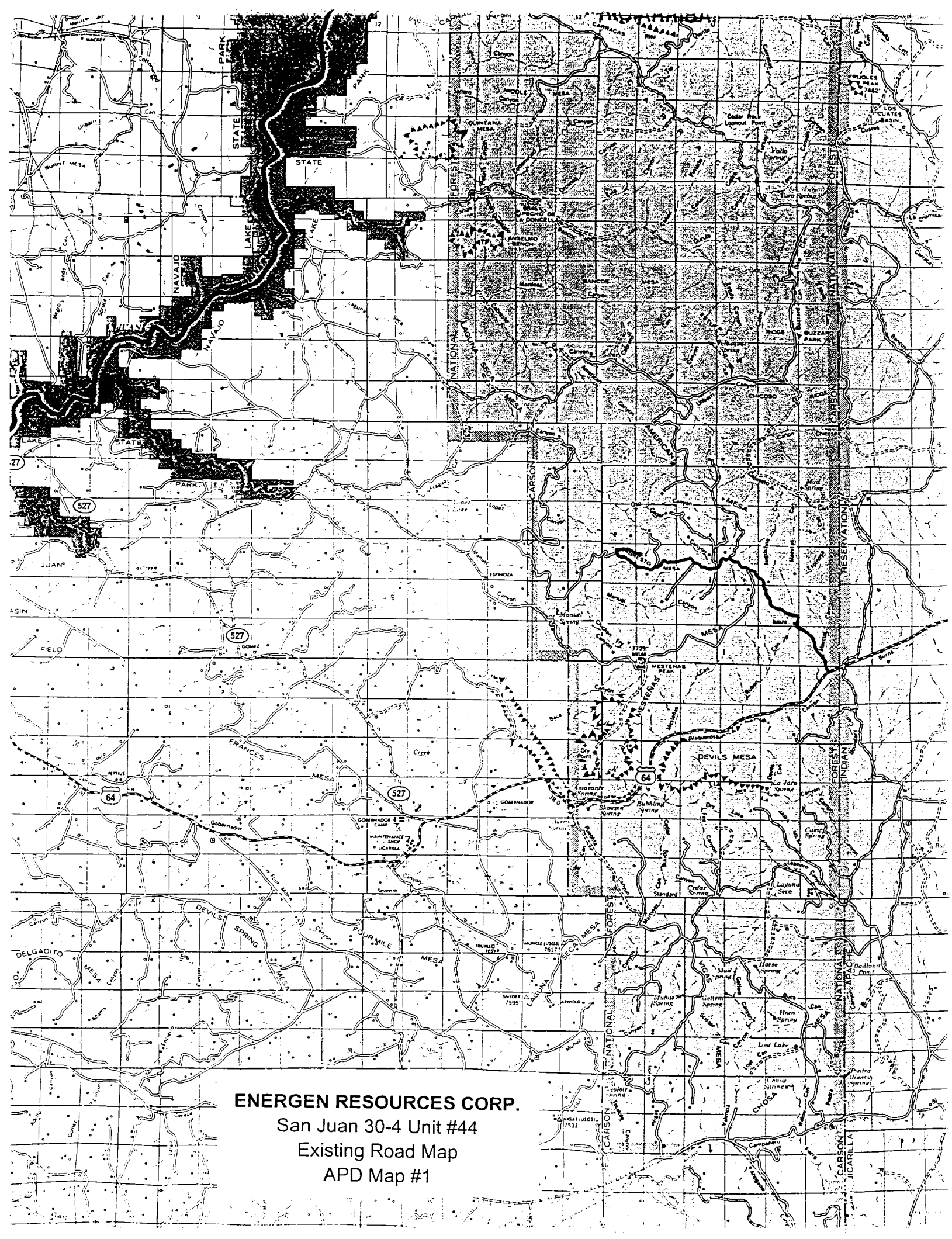
Cement nose guide shoe on bottom with float collar on top of shoe joint.

OTHER INFORMATION:

- 1) The Pictured Cliffs and Blanco Mesaverde will be completed as a dual.
- 2) No abnormal temperatures or pressures are anticipated.
- 3) Anticipated pore pressure for the Fruitland Coal is 800, Pictured Cliffs 900 and the Mesaverde is 1100.
- 4) If lost circulation is encountered, sufficient LCM will be added to the mud system to maintain well control.
- 5) This gas is dedicated.

1095' FNL & 75' FWL, SECTION 20, T30N, R4W, N.M.P.M.
RIO ARRIBA COUNTY, NEW MEXICO





ENERGEN RESOURCES CORP.
San Juan 30-4 Unit #44
Existing Road Map
APD Map #1