

UNITED STATES
DEPARTMENT OF THE INTERIOR
BUREAU OF LAND MANAGEMENT

Sundry Notices and Reports on Wells

1. Type of Well
GAS

2. Name of Operator
BURLINGTON RESOURCES OIL & GAS COMPANY

3. Address & Phone No. of Operator
PO Box 4289, Farmington, NM 87499 (505) 326-9700

4. Location of Well, Footage, Sec., T, R, M
945' FNL, 1620' FWL, Sec.11, T-30-N, R-6-W, NMPM

5. Lease Number
NMSF-080714

6. If Indian, All. or Tribe Name

7. Unit Agreement Name
San Juan 30-6 Unit

8. Well Name & Number
San Juan 30-6 U #136

9. API Well No.
30-039-26334

10. Field and Pool
Gobernador Pict Cliffs

11. County and State
Rio Arriba Co, NM

12. CHECK APPROPRIATE BOX TO INDICATE NATURE OF NOTICE, REPORT, OTHER DATA

Type of Submission

Type of Action

<input checked="" type="checkbox"/> Notice of Intent	<input checked="" type="checkbox"/> Abandonment	<input type="checkbox"/> Change of Plans
<input type="checkbox"/> Subsequent Report	<input type="checkbox"/> Recompletion	<input type="checkbox"/> New Construction
<input type="checkbox"/> Final Abandonment	<input type="checkbox"/> Plugging Back	<input type="checkbox"/> Non-Routine Fracturing
	<input type="checkbox"/> Casing Repair	<input type="checkbox"/> Water Shut off
	<input type="checkbox"/> Altering Casing	<input type="checkbox"/> Conversion to Injection
	<input type="checkbox"/> Other -	

13. Describe Proposed or Completed Operations

It is intended to plug and abandon the subject well according to the attached procedure and wellbore diagram.

RECEIVED
2002 APR 17 PM 1:20
070 FARMINGTON, NM

14. I hereby certify that the foregoing is true and correct.

Signed Nancy Oltmanns for (MW7) Title Regulatory Supervisor Date 4/16/02
no

(This space for Federal or State Office use)

APPROVED BY _____ Title _____ Date 4/29/02
CONDITION OF APPROVAL, if any:

Plug and Abandonment Procedure 3/26/02
San Juan 30-6 Unit #136
Gobernador Pictured Cliffs
945' FNL, 1620' FWL
Unit E, Section 11, T-30-N, R-6-W
Latitude 36° 49.90' / Longitude: 107° 26.10'
AIN: 82310801

Note: All cement volumes use 100% excess outside pipe and 50' excess inside pipe. The stabilizing wellbore fluid will be 8.3 ppg, sufficient to balance all exposed formation pressures. All cement will be ASTM Type II, mixed at 15.6 ppg with a 1.18 cf/sx yield.

1. Install and test location rig anchors. Prepare blow pit. Comply with all NMOCD, BLM, and Burlington safety regulations. MOL and RU daylight pulling unit. Conduct safety meeting for all personnel on location. NU relief line and blow down well; kill with water as necessary. ND wellhead and NU BOP. Test BOP. PU 10 or 11 joints 2-3/8" tubing and tag existing CIBP at 3198', or as deep as possible.
2. **Plug #1 (Pictured Cliffs and Fruitland Coal perforations, 3198' – 2884')**: Pump 50 bbls water down tubing. Mix 36 sxs cement (50% excess, long plug) and spot a balanced plug inside casing above the CIBP to isolate the Pictured Cliffs and Fruitland perforations. PUH and WOC. TIH and tag cement. Load casing with water and circulate well clean. Pressure test casing to 500#. If casing does not test, then spot or tag subsequent plugs as necessary. PUH to 2505'.
3. **Plug #2 (Kirtland and Ojo Alamo tops, 2505' – 2278')**: Mix 21 sxs cement and spot a balanced plug inside casing to cover the Kirtland and Ojo Alamo tops. PUH to 1100'.
4. **Plug #3 (Nacimiento top, 1100' – 1000')**: Mix 12 sxs cement and spot a balanced plug inside casing to cover the Nacimiento top. PUH to 273'.
5. **Plug #4 (8-5/8" Surface casing, 273' - Surface)**: Attempt to pump into bradenhead annulus, up to 300#. If able to establish rate, then perforate 3 HSC holes at 273' and circulate cement to surface filling the casing and annulus. If bradenhead tests and with the tubing at 273', then mix approximately 21 sxs cement and spot a balanced plug inside the 4-1/2' casing to surface. TOH and LD tubing. Shut in well and WOC.
6. ND BOP and cut off casing below surface. Install P&A marker with cement to comply with regulations. RD, move off location, cut off anchors and restore location.

Recommended:

M Wardinsky 4/4/02

Operations Engineer
Mike Wardinsky

Approved:

M J Kubatish 4/15/02

Drilling Manager
Bruce Boyer

Sundry Required:

☒ YES ☐ NO

Approved:

Nancy Oltenmanna
Regulatory Approval
Peggy Cole

Ops Engineer: Mike Wardinsky Cell: 320-5113
Lease Operator: Steve Stamets Cell: 327-8871
Specialist: Gabe Archibeque Cell: 320-2478
Foreman: Bruce Voiles Cell: 320-2478

Office: 599-4045
Pager: 320-2516
Pager: 326-8256
Pager: 327-893

MHW/slm

San Juan 30-6 Unit #136

Current

AIN # 82310801

Wildcat Pictured Cliffs

NW, Section 11, T-30-N, R-6-W, Rio Arriba County, NM

API #30-039-26334

Long: 107°26.10' / Lat: 36°49.90'

Today's Date: 3/26/02

Spud: 5/5/00

Completed: 8/17/00

Elevation: 6292' GL
6304' KB

Nacimiento @ 1050'

Ojo Alamo @ 2328'

Kirtland @ 2455'

Fruitland Coal @ 2934'

Pictured Cliffs @ 3224'

12-1/4" hole

6-1/4" hole

PBTD 3560'

TD 3560'

Circulated 15 bbls cmt to surface

8-5/8" 24#, J-55 Casing set @ 223'
Cmt w/236 cf (Circulated to Surface)

Well History

Dec 4, 2001: TOH with tubing; ran Gamma strip log. Set 4-1/2" CIBP at 3198'. Perforate FtC zones. Ran 6 set of pressure gauges and RBP. Shut in well for build up.

Dec 21, 2001: Retrieve RBPs and pressure gauges. Land tubing at 2883'.

2-3/8" Tubing set at 2883'
(93 joints, EUE)

Fruitland Coal Perforations:
2932' - 3092'

4-1/2" CIBP at 3198' (12/01)

Pictured Cliffs Perforations:
3248' - 3353'

4-1/2" 10.5# J-55 Casing set @ 3560'
Cement with 1314 cf
Circulated to surface

San Juan 30-6 Unit #136

Proposed P&A

AIN # 82310801

Wildcat Pictured Cliffs

NW, Section 11, T-30-N, R-6-W, Rio Arriba County, NM

API #30-039-26334

Long: 107°26.10' / Lat: 36° 49.90'

Today's Date: 3/26/02

Spud: 5/5/00

Completed: 8/17/00

Elevation: 6292' GL
6304' KB

Nacimiento @ 1050'

Ojo Alamo @ 2328'

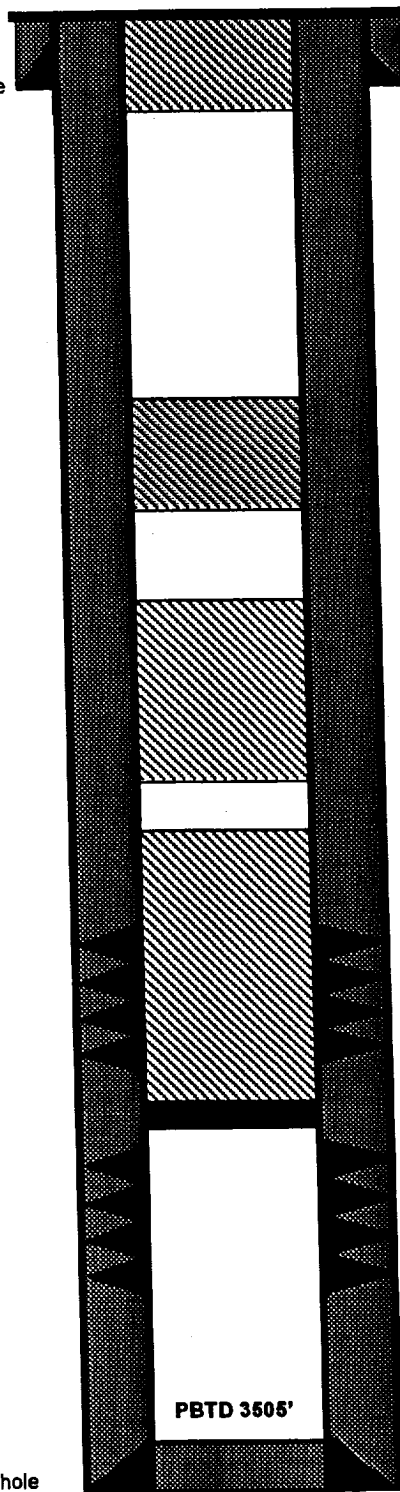
Kirtland @ 2455'

Fruitland Coal @ 2934'

Pictured Cliffs @ 3224'

12-1/4" hole

6-1/4" hole



Circulated 15 bbls cmt to surface

8-5/8" 24#, J-55 Casing set @ 223'
Cmt w/236 cf (Circulated to Surface)

Plug #4 273' - Surface
Cement with 21 sxs

Plug #3 1100' - 1000'
Cement with 12 sxs

Plug #2 2505' - 2278'
Cement with 21 sxs

Plug #1 3198' - 2884'
Cement with 36 sxs,
(50% excess, long plug)

Fruitland Coal Perforations:
2932' - 3092'

4-1/2" CIBP at 3198' (12/01)

Pictured Cliffs Perforations:
3248' - 3353'

4-1/2" 10.5#, J-55 Casing set @ 3560'
Cement with 1314 cf
Circulated cement to surface

PBTB 3505'

TD 3560'