

UNITED STATES
DEPARTMENT OF THE INTERIOR
BUREAU OF LAND MANAGEMENT

APPLICATION FOR PERMIT TO DRILL, DEEPEN, OR PLUG BACK

1a. Type of Work DRILL	5. Lease Number NM-012709 Unit Reporting Number	
1b. Type of Well GAS	6. If Indian, All. or Tribe	
2. Operator BURLINGTON RESOURCES Oil & Gas Company	7. Unit Agreement Name San Juan 30-6 Unit	
3. Address & Phone No. of Operator PO Box 4289, Farmington, NM 87499 (505) 326-9700	8. Farm or Lease Name San Juan 30-6 Unit 9. Well Number 8B	
4. Location of Well 1350' FNL, 1570' FWL 1400' 1075' Latitude 36° 46.4, Longitude 107° 36.8	10. Field, Pool, Wildcat Blanco Meaverde 11. Sec., Twn, Rge, Mer. (NMPM) F Sec. 31, T-30-N, R-7-W API # 30-039-21	
14. Distance in Miles from Nearest Town 2 miles from Navajo City	12. County Rio Arriba	13. State NM
15. Distance from Proposed Location to Nearest Property or Lease Line 1350'	17. Acres Assigned to Well 211.32 W/2	
16. Acres in Lease	18. Distance from Proposed Location to Nearest Well, Drig, Compl, or Applied for on this Lease 1200'	
19. Proposed Depth 5600'	20. Rotary or Cable Tools Rotary	
21. Elevations (DF, FT, GR, Etc.) 6158' GR 6139'	22. Approx. Date Work will Start	
23. Proposed Casing and Cementing Program See Operations Plan attached	DRILLING OPERATIONS AUTHORIZED ARE SUBJECT TO COMPLIANCE WITH ATTACHED "GENERAL REQUIREMENTS"	
24. Authorized by: <u>Peggy Cale</u> Regulatory/Compliance Administrator	Date <u>12-20-99</u>	

PERMIT NO. _____

APPROVAL DATE _____

APPROVED BY IL

TITLE _____

DATE 11-27-00

Archaeological Report to be submitted

Threatened and Endangered Species Report to be submitted

NOTE: This format is issued in lieu of U.S. BLM Form 3160-3

Title 18 U.S.C. Section 1001, makes it a crime for any person knowingly and willfully to make to any department or agency of the United States any false, fictitious or fraudulent statements or presentations as to any matter within its jurisdiction.

NMOCD

submitted in lieu of Form 3160-5

UNITED STATES
DEPARTMENT OF THE INTERIOR
BUREAU OF LAND MANAGEMENT

Sundry Notices and Reports on Wells

1. Type of Well
GAS

2. Name of Operator

**BURLINGTON
RESOURCES**

OIL & GAS COMPANY

3. Address & Phone No. of Operator

PO Box 4289, Farmington, NM 87499 (505) 326-9700

4. Location of Well, Footage, Sec., T, R, M

1400' FNL, 1075' FWL, Sec. 31, T-30-N, R-7-W, NMPM

5. Lease Number
NM-012709

6. If Indian, All. or
Tribe Name

7. Unit Agreement Name
San Juan 30-6 Unit

8. Well Name & Number
San Juan 30-6 U #8B

9. API Well No.
30-039- **26369**

10. Field and Pool
Blanco Mesaverde

11. County and State
Rio Arriba Co, NM

12. CHECK APPROPRIATE BOX TO INDICATE NATURE OF NOTICE, REPORT, OTHER DATA

Type of Submission

☒ Notice of Intent
☐ Subsequent Report
☐ Final Abandonment

Type of Action

☐ Abandonment ☒ Change of Plans
☐ Recompletion ☐ New Construction
☐ Plugging Back ☐ Non-Routine Fracturing
☐ Casing Repair ☐ Water Shut off
☐ Altering Casing ☐ Conversion to Injection
☒ Other -

13. Describe Proposed or Completed Operations

The subject well has been moved from ¹³⁵⁰~~1480~~' FNL, ¹⁵⁷⁰~~1435~~' FWL to 1400' FNL, 1075' FWL, Sec. 31, T-30-N, R-7-W. Attached are the revised C-102 plat, topo map, and cut & fill diagram.

14. I hereby certify that the foregoing is true and correct.

Signed *[Signature]* Title Regulatory Supervisor Date 11/20/00
TLW

(This space for Federal or State Office use)

APPROVED BY *[Signature]* Title Date NOV 27 2000

CONDITION OF APPROVAL, if any:

Title 18 U.S.C. Section 1001, makes it a crime for any person knowingly and willfully to make to any department or agency of the United States any false, fictitious or fraudulent statements or representations as to any matter within its jurisdiction.

District I
PO Box 1980, Hobbs, NM 88241-1980

District II
PO Drawer DD, Artesia, NM 88211-0719

District III
1000 Rio Brazos Rd., Aztec, NM 87410

District IV
PO Box 2088, Santa Fe, NM 87504-2088

State of New Mexico
Energy, Minerals & Natural Resources Department

OIL CONSERVATION DIVISION
PO Box 2088
Santa Fe, NM 87504-2088

Form C-102
Revised February 21, 1994
Instructions on back
Submit to Appropriate District Office
State Lease - 4 Copies
Fee Lease - 3 Copies

☐ AMENDED REPORT

WELL LOCATION AND ACREAGE DEDICATION PLAT

*API Number 30-039- 26369		*Pool Code 72319	*Pool Name Blanco Mesaverde
*Property Code 7469	*Property Name SAN JUAN 30-6 UNIT		*Well Number 8B
*GRID No. 14538	*Operator Name BURLINGTON RESOURCES OIL & GAS COMPANY		*Elevation 6139'

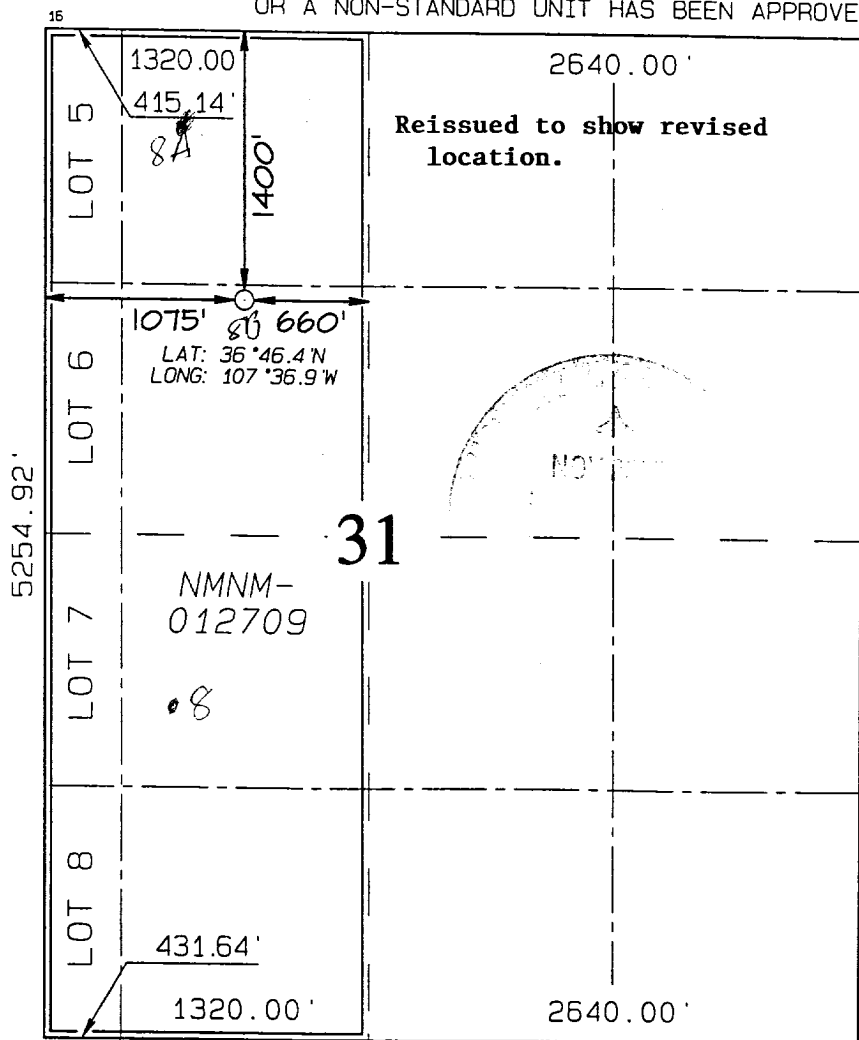
¹⁰ Surface Location

UL or lot no. F	Section 31	Township 30N	Range 7W	Lot Idn	Feet from the 1400	North/South line NORTH	Feet from the 1075	East/West line WEST	County RIO ARriba
---------------------------	----------------------	------------------------	--------------------	---------	------------------------------	----------------------------------	------------------------------	-------------------------------	-----------------------------

¹¹ Bottom Hole Location If Different From Surface

UL or lot no.	Section	Township	Range	Lot Idn	Feet from the	North/South line	Feet from the	East/West line	County
¹² Dedicated Acres W/211.32		¹³ Joint or Infill		¹⁴ Consolidation Code		¹⁵ Order No.			

NO ALLOWABLE WILL BE ASSIGNED TO THIS COMPLETION UNTIL ALL INTERESTS HAVE BEEN CONSOLIDATED OR A NON-STANDARD UNIT HAS BEEN APPROVED BY THE DIVISION



¹⁷ OPERATOR CERTIFICATION
I hereby certify that the information contained herein is true and complete to the best of my knowledge and belief

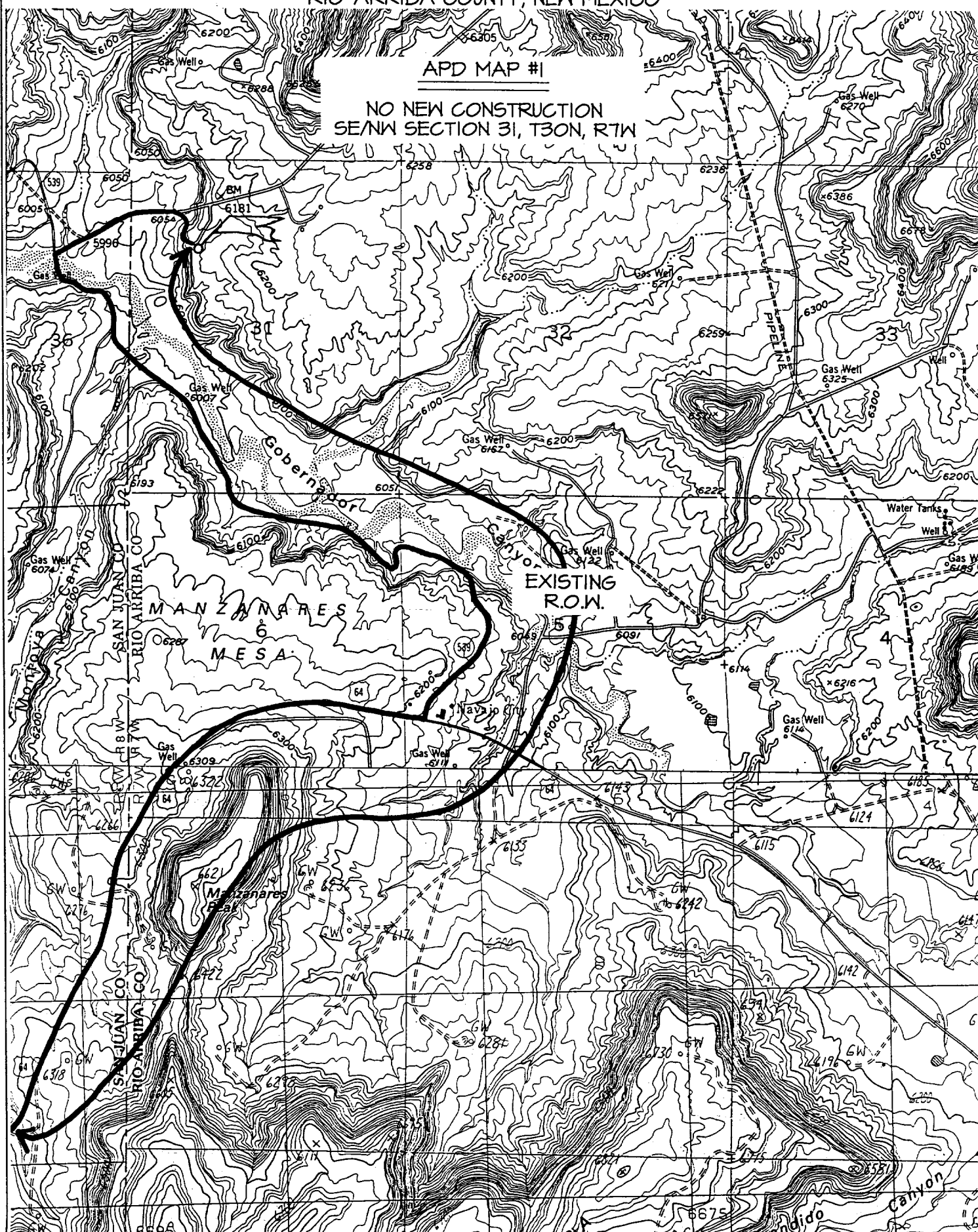
Peggy Cole
Signature
Peggy Cole
Printed Name
Regulatory Supervisor
Title
11-20-00
Date

¹⁸ SURVEYOR CERTIFICATION
I hereby certify that the well location shown on this plat was plotted from field notes of actual surveys made by me or under my supervision, and that the same is true and correct to the best of my belief.

NOVEMBER 7, 2000
Date of Survey
Signature and Seal of Professional Surveyor
NEALE C. EDWARDS
NEW MEXICO
6857
Certificate No. **6857**

1400' FNL & 1075' FWL, SECTION 31, T30N, R7W, N.M.P.M.
RIO ARRIBA COUNTY, NEW MEXICO

NO NEW CONSTRUCTION
SE/NW SECTION 31, T30N, R7W



OPERATIONS PLAN

Well Name: San Juan 30-6 Unit #8B
Surface Location: 1350' FNL, 1570' FWL, Section 31, T-30-N, R-7-W
Rio Arriba County, New Mexico
Latitude 36° 46.4, Longitude 107° 36.8
Formation: Blanco Mesa Verde
Elevation: 6158' GL

<u>Formation Tops:</u>	<u>Top</u>	<u>Bottom</u>	<u>Contents</u>
Surface	San Jose	2011'	aquifer
Ojo Alamo	2011'	2131'	aquifer
Kirtland	2131'	2763'	gas
Fruitland	2763'	3002'	gas
Pictured Cliffs	3002'	3261'	gas
Lewis	3261'	4030'	gas
Intermediate TD	3361'		
Chacra	4030'	4751'	gas
Massive Cliff House	4751'	4841'	gas
Menefee	4841'	5191'	gas
Point Lookout	5191'	5321'	gas
Mancos	5321'		
Total Depth	5600'		

Logging Program:

Open hole GR-CNL, CMR, CDL - surface to TD
Cased hole Gamma Ray, Cement bond - surface to TD
Mud Logs/Coring/DST - none

Mud Program:

<u>Interval- MD</u>	<u>Type</u>	<u>Weight</u>	<u>Vis.</u>	<u>Fluid Loss</u>
0- 200'	Spud	8.4-9.0	40-50	no control
200- 3361'	LSND	8.4-9.0	30-60	no control
3361- 5600'	Air/Mist	n/a	n/a	n/a

Pit levels will be visually monitored to detect gain or loss of fluid control.

Casing Program (as listed, the equivalent, or better):

<u>Hole Size</u>	<u>Measured Depth</u>	<u>Csg Size</u>	<u>Weight</u>	<u>Grade</u>
12 1/4"	0' - 200'	9 5/8"	32.3#	H-40
8 3/4"	0' - 3361'	7"	20.0#	J-55
6 1/4"	3261' - 5600'	4 1/2"	10.5#	J-55

Tubing Program: 0' -5600' 2 3/8" 4.7# J-55

BOP Specifications, Wellhead and Tests:

Surface to Intermediate TD -

11" 2000 psi minimum double gate BOP stack (Reference Figure #1).
After nipple-up prior to drilling out surface casing, rams and casing will be tested to 600 psi for 30 minutes.

Intermediate TD to Total Depth -

11" 2000 psi minimum double gate BOP stack (Reference Figure #1).
After nipple-up prior to drilling out intermediate casing, rams and casing will be tested to 1500 psi for 30 minutes.

Surface to Total Depth -

2" nominal, 2000 psi minimum choke manifold (Reference Figure #3).

Completion Operations -

7 1/16" 2000 psi double gate BOP stack (Reference Figure #2).
After nipple-up prior to completion, pipe rams, casing and liner top will be tested to 2000 psi for 15 minutes.

Wellhead -

9 5/8" x 7" x 2 3/8" x 2000 psi tree assembly.

General -

- Pipe rams will be actuated once each day and blind rams will be actuated once each trip to test proper functioning.
- An upper kelly cock valve with handle available and drill string valves to fit each drill string will be available on the rig floors at all times.
- BOP pit level drill will be conducted weekly for each drill crew.
- All BOP tests & drills will be recorded in daily drilling reports.
- Blind and pipe rams will be equipped with extension hand wheels.

Cementing:

9 5/8" surface casing - cement with 159 sx Class "B" cement with 1/4# flocele/sx and 3% calcium chloride (188 cu.ft. of slurry, 200% excess to circulate to surface). WOC 8 hrs. Test casing to 600 psi for 30 minutes.

Saw tooth guide shoe on bottom. Bowspring centralizers will be run in accordance with Onshore Order #2.

7" intermediate casing -

Lead w/304 sx Class "B" w/3% sodium metasilicate, 7# gilsonite/sx and 0.5# flocele/sx. Tail w/90 sx 50/50 Class "B" Poz w/2% gel, 2% calcium chloride, 7# gilsonite/sx and 0.5# flocele/sx (1011 cu.ft. of slurry, 100% excess to circulate to surface.) WOC minimum of 8 hours before drilling out intermediate casing. If cement does not circulate to surface, a CBL will be run to determine TOC. Test casing to 1500 psi for 30 minutes.

7" intermediate casing alternative two stage: Stage collar at 2663'. First stage: cement with 156 sx Class "B" 50/50 poz w/2% gel, 7 pps Gilsonite, 1% calcium chloride, 0.5 pps Cellophane. Second stage: 273 sx Class "B" with 3% sodium metasilicate, 1/2 pps Cellophane, 7 pps Gilsonite (1011 cu.ft., 100% excess to circulate to surface).

Cement nose guide shoe on bottom with float collar spaced on top of shoe joint. Bowspring centralizers spaced every other joint off bottom, to the base of the Ojo Alamo at 2131'. Two turbolating centralizers at the base of the Ojo Alamo at 2131'. Bowspring centralizers spaced every fourth joint from the base of the Ojo Alamo to the base of the surface casing.

4 1/2" Production Liner -

Cement to circulate liner top. Pump 265 sx 50/50 Class "B" Poz w/1/4# flocele/sx, 2% gel, 0.1% retardant, 5# gilsonite/sx and 0.4% fluid loss additive (336 cu.ft., 40% excess to circulate liner top). WOC a minimum of 18 hrs prior to completing.

Cement nose guide shoe on bottom with float collar spaced on top of shoe joint. The liner hanger will have a rubber packoff.

- If hole conditions permit, an adequate water spacer will be pumped ahead of each cement job to prevent cement/ mud contamination or cement hydration.

Special Drilling Operations (Air/Mist Drilling):

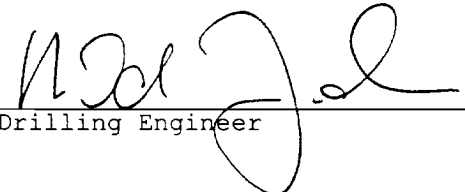
The following equipment will be operational while gas/mist drilling:

- An anchored blooie line will be utilized to discharge all cuttings and circulating medium to the blow pit a minimum of 100' from the wellhead.
- The blooie line will be equipped with an automatic igniter or pilot light.
- Compressors will be located a minimum of 100' from the wellhead in the opposite direction from the blooie line.
- Engines will have spark arresters or water cooled exhaust.
- The rotating head will be properly lubricated and maintained.
- A float valve will be utilized above the bit.
- Mud circulating equipment, water, and mud materials will be sufficient to maintain control of the well.

Additional Information:

- The Mesa Verde formations will be completed.
- No abnormal temperatures or hazards are anticipated.
- Anticipated pore pressures are as follows:

Fruitland Coal	300 psi
Pictured Cliffs	600 psi
Mesa Verde	700 psi
- Sufficient LCM will be added to the mud system to maintain well control, if lost circulation is encountered below the top of the Pictured Cliffs.
- The west half of Section 31 is dedicated to the Mesa Verde.
- This gas is dedicated.



Drilling Engineer

12/27/1999

Date