

BURLINGTON RESOURCES

SAN JUAN DIVISION

Sent Federal Express

Mr. Michael Stogner
New Mexico Oil Conservation Division
2040 South Pacheco
Santa Fe, New Mexico 87505



Re: San Juan 30-6 Unit #31Y
1205'FNL, 1300'FWL Section 33, T-30-N, R-6-W, Rio Arriba County
30-039-26375

Dear Mr. Stogner:

Burlington Resources is applying for administrative approval of an unorthodox gas well location for the Basin Dakota. The San Juan 30-6 Unit #31E Basin Dakota well (30-039-26313) located at 1145'FNL, 1265'FWL in Section 33 was spud May 25, 2000. The hole developed problems and had to be plugged and abandoned on May 29, 2000. Permission was received from the Aztec District Office to skid the rig and drill the San Juan 30-6 Unit #31Y at the referenced location.

Production from the Dakota pool is to be included in a 320.07 acre gas spacing and proration unit for the west half (W/2) in Section 33.

The following attachments are for your review:

- Application for Permit to Drill
- Completed C-102 at referenced location.
- Offset operators/owners plat
- Plug and abandonment sundry notice for the San Juan 30-6 Unit #31E

Burlington Resources believes there are no correlative rights issues because the encroachment is internal to the quarter-quarter section line. The San Juan 30-6 Unit #31Y well is offset by San Juan 30-6 Unit acreage and Burlington is the operator of the San Juan 30-6 Unit.

Sincerely,

Peggy Cole
Regulatory Supervisor

xc: NMOCD - Aztec District Office
Bureau of Land Management

~~District I~~

PO Box 1980, Hobbs, NM 88241-1980
 District II
 811 South First, Artesia, NM 88210
 District III
 1000 Rio Brazos Rd., Aztec, NM 87410
 District IV
 2040 South Pacheco, Santa Fe, NM 87505

State of New Mexico
 Energy, Minerals & Natural Resources Department

OIL CONSERVATION DIVISION
 2040 South Pacheco
 Santa Fe, NM 87505

Form C-101

Revised October 18, 1994

Instructions on back

Submit to Appropriate District Office

State Lease - 6 Copies

Fee Lease - 5 Copies



AMENDED REPORT

APPLICATION FOR PERMIT TO DRILL, RE-ENTER, DEEPEN, PLUGBACK, OR ADD A ZONE

| | | |
|--|--|--|
| ¹ Operator Name and Address. Burlington Resources Oil & Gas Company PO Box 4289, Farmington, NM 87499 | | ² OGRID Number 14538 |
| ⁴ Property Code 7469 | ⁵ Property Name San Juan 30-6 Unit | ³ API Number 30 - 039- 26375 |
| | | ⁶ Well No. 31Y |

| ⁷ Surface Location | | | | | | | | | |
|-------------------------------|---------------|-----------------|-------------|---------|------------------------|---------------------------|------------------------|------------------------|----------------------|
| UL or lot no. D | Section 33 | Township 30N | Range 6W | Lot Idn | Feet from the 1205' | North/South line North | Feet from the 1300' | East/West line West | County Rio Arriba |

| ⁸ Proposed Bottom Hole Location If Different From Surface | | | | | | | | | |
|--|---------|----------|-------|---------|-------------------------------|------------------|---------------|----------------|--------|
| UL or lot no. | Section | Township | Range | Lot Idn | Feet from the | North/South line | Feet from the | East/West line | County |
| ⁹ Proposed Pool 1 Basin Daktoa | | | | | ¹⁰ Proposed Pool 2 | | | | |

| | | | | |
|-----------------------------------|---------------------------------------|--------------------------------------|--------------------------------------|--|
| ¹¹ Work Type Code N | ¹² Well Type Code G | ¹³ Cable/Rotary Rotary | ¹⁴ Lease Type Code Fee | ¹⁵ Ground Level Elevation 6315' GR |
| ¹⁶ Multiple N | ¹⁷ Proposed Depth 7950' | ¹⁸ Formation Dakota | ¹⁹ Contractor N/a | ²⁰ Spud Date N/a |

| ²¹ Proposed Casing and Cement Program | | | | | |
|--|-------------|--------------------|---------------|-----------------|---------------|
| Hole Size | Casing Size | Casing weight/foot | Setting Depth | Sacks of Cement | Estimated TOC |
| 12 1/4" | 9 5/8" | 32.3# | 200' | 188 cu.ft. | Surface |
| 8 3/4" | 7" | 20# | 3627' | 1091 cu.ft. | Surface |
| 6 1/4" | 4 1/2" | 10.5# | 3527-7950' | 636 cu.ft. | 3527' |
| | | | | | |
| | | | | | |

²² Describe the proposed program. If this application is to DEEPEN or PLUG BACK give the data on the present productive zone and proposed new productive zone. Describe the blowout prevention program, if any. Use additional sheets if necessary.

11" 3000 psi minimum double gate BOP

Note: to facilitate higher hydraulic stimulation completion work, no liner hanger will be used. In its place, a long string of 4 1/2" casing will be run and cemented with a minimum of 100' of cement overlap between the 4 1/2" and 7" casing strings. After completion of the well, a 4 1/2" retrievable bridge plug will be set below the top of cement in the 4 1/2" x 7" overlap. The 4 1/2" casing will then be backed off above the top of cement in the 4 1/2" x 7" overlap and laid down. The 4 1/2" bridge plug will then be retrieved and the production tubing will be run to produce the well.

²³ I hereby certify that the information given above is true and complete to the best of my knowledge and belief.

Signature:

Peggy Cole

Printed name: Peggy Cole

Title: Regulatory/Compliance Administrator

Date:

5-31-00

Phone: 505-326-9700

OIL CONSERVATION DIVISION

Approved by:

[Signature]

Title: DEPUTY OIL & GAS INSPECTOR, DIST. 3

Approval Date: JUN - 2 2000

Expiration Date: JUN - 2 2001

Conditions of Approval :
 Attached ☐

HOLD 0104 FOR *NSV*

District I
PO Box 1980, Hobbs, NM 88241-1980

District II
PO Drawer 00, Artesia, NM 88211-0719

District III
1000 Rio Brazos Rd., Aztec, NM 87410

District IV
PO Box 2088, Santa Fe, NM 87504-2088

State of New Mexico
Energy, Minerals & Natural Resources Department

OIL CONSERVATION DIVISION
PO Box 2088
Santa Fe, NM 87504-2088

Form C-102
Revised February 21, 1994
Instructions on back
Submit to Appropriate District Office
State Lease - 4 Copies
Fee Lease - 3 Copies

☐ AMENDED REPORT

WELL LOCATION AND ACREAGE DEDICATION PLAT

| | | | |
|------------------------|--|---------------------|----------------------------|
| *API Number 30-039- | | *Pool Code 71599 | *Pool Name Basin Dakota |
| *Property Code 7469 | *Property Name SAN JUAN 30-6 UNIT | | *Well Number 31Y |
| *GRID No. 14538 | *Operator Name BURLINGTON RESOURCES OIL & GAS COMPANY | | *Elevation 6315' |

¹⁰ Surface Location

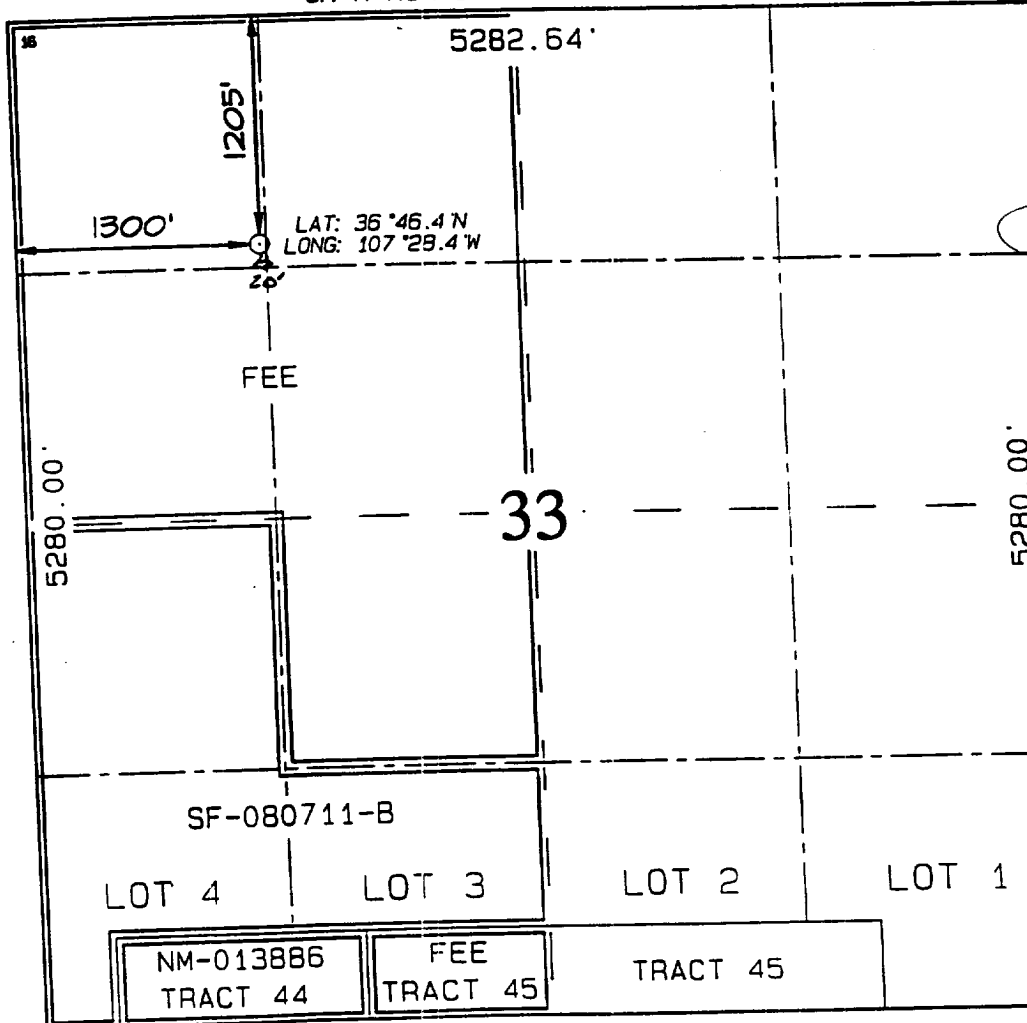
| UL or lot no. | Section | Township | Range | Lot Idn | Feet from the | North/South line | Feet from the | East/West line | County |
|---------------|---------|----------|-------|---------|---------------|------------------|---------------|----------------|------------|
| D | 33 | 30N | 6W | | 1205 | NORTH | 1300 | WEST | RIO ARriba |

¹¹ Bottom Hole Location If Different From Surface

| UL or lot no. | Section | Township | Range | Lot Idn | Feet from the | North/South line | Feet from the | East/West line | County |
|---------------|---------|----------|-------|---------|---------------|------------------|---------------|----------------|--------|
| | | | | | | | | | |

| | | | |
|---|-------------------------------|----------------------------------|-------------------------|
| ¹² Dedicated Acres W/320.07 | ¹³ Joint or Infill | ¹⁴ Consolidation Code | ¹⁵ Order No. |
|---|-------------------------------|----------------------------------|-------------------------|

NO ALLOWABLE WILL BE ASSIGNED TO THIS COMPLETION UNTIL ALL INTERESTS HAVE BEEN CONSOLIDATED
OR A NON-STANDARD UNIT HAS BEEN APPROVED BY THE DIVISION



¹⁷ OPERATOR CERTIFICATION

I hereby certify that the information contained herein is true and complete to the best of my knowledge and belief.

Signature

Peggy Cole

Printed Name

Regulatory Supervisor

Title

Date

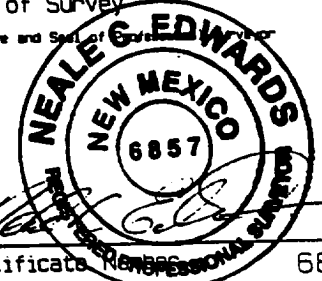
¹⁸ SURVEYOR CERTIFICATION

I hereby certify that the well location shown on this plat was plotted from field notes of actual surveys made by or under my supervision, and that the same is true and correct to the best of my belief.

MAY 31, 2000

Date of Survey

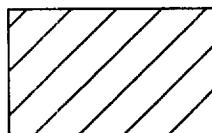
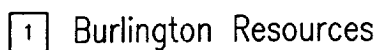
Signature and Seal of Surveyor



Certificate Number 6857

San Juan 30-6 Unit #31Y
Section 33, T-30-N, R-6-W
OFFSET OPERATOR/OWNER PLAT

Dakota Formation Well



Proposed Well

State of New Mexico
Energy, Minerals and Natural Resources Department
Oil Conservation Division

Sundry Notices and Reports on Wells

| | |
|--|---|
| 1. Type of Well GAS | API # (assigned by OCD) 30-039-26313 5. Lease Number Fee 6. State Oil&Gas Lease # 7. Lease Name/Unit Name San Juan 30-6 Unit 8. Well No. 31E 9. Pool Name or Wildcat Basin Dakota 10. Elevation: |
| <hr/> | |
| 2. Name of Operator BURLINGTON RESOURCES OIL & GAS COMPANY | |
| <hr/> | |
| 3. Address & Phone No. of Operator PO Box 4289, Farmington, NM 87499 (505) 326-9700 | |
| <hr/> | |
| 4. Location of Well, Footage, Sec., T, R, M 1145' FNL, 1265' FWL, Sec. 33, T-30-N, R-6-W, NMPM, Rio Arriba County | |

| Type of Submission | Type of Action |
|---|--|
| <input type="checkbox"/> Notice of Intent | <input checked="" type="checkbox"/> Abandonment |
| <input checked="" type="checkbox"/> Subsequent Report | <input type="checkbox"/> Recompletion |
| <input type="checkbox"/> Final Abandonment | <input type="checkbox"/> Plugging Back |
| | <input type="checkbox"/> Casing Repair |
| | <input type="checkbox"/> Altering Casing |
| | <input checked="" type="checkbox"/> Other - Spud |
| | <input type="checkbox"/> Change of Plans |
| | <input type="checkbox"/> New Construction |
| | <input type="checkbox"/> Non-Routine Fracturing |
| | <input type="checkbox"/> Water Shut off |
| | <input type="checkbox"/> Conversion to Injection |

13. Describe Proposed or Completed Operations

5-25-00 MIRU. Spud well @ 4:00 p.m. 5-25-00. Drill to 243'. Circ hole clean. TOOH. TIH w/5 jts 9 5/8" 32.3# WC-50 ST&C csg, set @ 238'. Cmt'd w/250 sx Class "B" cmt w/3% calcium chloride, 0.25 pps Flocele (295 cu.ft.). Displace w/16 bbl wtr. Circ 16 bbl cmt to surface. WOC. NU BOP.

5-26-00 PT BOP & csg to 600 psi/30 min, OK. Drilling ahead.

5-28-00 Drill to 3627'. Drill pipe stuck. TIH w/free point. Drill pipe stuck third drill collar from top. Back off drill pipe @ 3109'. TOOH.

5-29-00 Circ hole clean. TIH, screw into fish @ 3109'. Jar on fish. No results. TOOH. TIH, circ hole clean. TOOH. TIH. Plug #1: pump 53 sx Class "B" neat cmt @ 3009-3109'. TOOH. Plug #2: pump 53 sx Class "B" neat cmt @ 2543-2643'. Plug #3: pump 53 sx Class "B" neat cmt @ 2242-2342'. Plug #4: pump 45 sx Class "B" neat cmt @ 188-288'. Plug #5: pump 19 sx Class "B" neat cmt @ 0-50'. ND BOP. Remove WH. RD. Rig released.

(Verbal approval to plug and abandon from Henry Villaneuva, OCD 5-29-00).

SIGNATURE *Reggie Cole* Regulatory Supervisor May 30, 2000

no
(This space for State Use)

Approved by _____ Title _____ Date _____