

District I  
1625 N. French Dr., Hobbs, NM 88240  
District II  
811 S. 1st Street, Artesia, NM 88210  
District III  
1000 Rio Brazos Rd., Aztec, NM 87410  
District IV  
2040 South Pacheco, Santa Fe, NM 87505

State of New Mexico  
Energy, Minerals & Natural Resources

Form C-101  
Revised March 17, 1999

Oil Conservation Division  
2040 South Pacheco  
Santa Fe, NM 87505

Submit to appropriate District Office  
State Lease - 6 Copies  
Fee Lease - 5 Copies

☐ AMENDED REPORT

APPLICATION FOR PERMIT TO DRILL, RE-ENTER, DEEPEN, PLUGBACK, OR ADD A ZONE

<sup>1</sup> Operator Name and Address Phillips Petroleum Company 5525 Highway 64, NBU 3004, Farmington, NM 87401		<sup>2</sup> OGRID Number 017654
<sup>4</sup> Property Code 009259	<sup>5</sup> Property Name San Juan 31-6 Unit	<sup>3</sup> API Number 30-039-26464
		<sup>6</sup> Well No. 48M

<sup>7</sup> Surface Location

UL or lot no.	Section	Township	Range	Lot. Idn	Feet from the	North/South Line	Feet from the	East/West line	County
L	2	30N	6W		1762'	South	660'	West	Rio Arriba

<sup>8</sup> Proposed Bottom Hole Location If Different From Surface

UL or lot no.	Section	Township	Range	Lot. Idn	Feet from the	North/South Line	Feet from the	East/West line	County
L									

<sup>9</sup> Proposed Pool 1 Basin Dakota 71599		<sup>10</sup> Proposed Pool 2 Blanco Mesaverde 72319	
--	--	---	--

<sup>11</sup> Work Type Code N	<sup>12</sup> Well Type Code G	<sup>13</sup> Cable/Rotary R	<sup>14</sup> Lease Type Code S-347-46	<sup>15</sup> Ground Level Elevation 6280' GL-
<sup>16</sup> Multiple Y	<sup>17</sup> Proposed Depth 7902'	<sup>18</sup> Formation Dakota	<sup>19</sup> Contractor Key Energy	<sup>20</sup> Spud Date 8/2/01

<sup>21</sup> Proposed Casing and Cement Program

Hole Size	Casing Size	Casing weight/foot	Setting Depth	Sacks of Cement	Estimated TOC
12-1/4"	9-5/8"	32.3#, H-40	320'	158.6 sx	surface
8-3/4"	7"	20#, J-55	3597'	L-430sx; T-50sx	surface
6-1/4"	4-1/2"	11.6#, I-80	7902'	338.1 sx	3497'

<sup>22</sup> Describe the proposed program. If this application is to DEEPEN or PLUG BACK, give the data on the present productive zone and proposed new productive zone.

Describe the blowout prevention program, if any. Use additional sheets if necessary.

\* The surface casing will be set at a minimum of 320', but could be set deeper if required to maintain hole stability.

\*\* The Production String casing cement is designed to cover openhole section with 40% excess and 100' inside the 7" shoe.

See attached for the BOP details. A cathodic protection ground bed will be drilled on location. This well will be commingled per DHCo Order 11363 and DHC application will be submitted at a later date.

<sup>23</sup> I hereby certify that the information given above is true and complete to the best of my knowledge and belief.

Signature:

Printed name:

Title:

Date:

7/9/01

Phone:

505-599-3454

OIL CONSERVATION DIVISION

Approved by:

Title: DEPUTY OIL & GAS INSPECTOR, DIST. 40

Approval Date:

Conditions of Approval:

Attached ☐

Expiration Date:

<div style="display: flex; justify-content: space-between;"> <span>16</span> <span>West</span> <span>5280.00'</span> </div>		<div style="display: flex; justify-content: space-between;"> <span>17</span> <span>OPERATOR CERTIFICATION</span> </div>	
<div style="display: flex; justify-content: space-between;"> <span>8</span> <span>7</span> <span>6</span> <span>5</span> </div>		<p><i>I hereby certify that the information contained herein is true and complete to the best of my knowledge and belief</i></p>	
<div style="display: flex; justify-content: space-between;"> <span>2</span> <span>E-347-47</span> </div>		<p><i>Patsy Clugston</i></p>	
<div style="display: flex; justify-content: space-between;"> <span>5286.60'</span> <span>5272.74'</span> </div>		<p>Signature Patsy Clugston</p>	
<div style="display: flex; justify-content: space-between;"> <span>South</span> <span>Section 2</span> </div>		<p>Printed Name Sr. Regulatory/Proration Cler</p>	
<div style="display: flex; justify-content: space-between;"> <span>660'</span> <span>E-347-46 160.0 acres</span> </div>		<p>Title 7-9-01</p>	
<div style="display: flex; justify-content: space-between;"> <span>1762'</span> <span>N89°47'E</span> </div>		<p>Date 5-18-01</p>	
<div style="display: flex; justify-content: space-between;"> <span>5264.16'</span> </div>		<p>18 SURVEYOR CERTIFICATION</p>	
<div style="display: flex; justify-content: space-between;"> <span>5280.00'</span> </div>		<p><i>I hereby certify that the well location shown on this plat was plotted from field notes of actual surveys made by me or under my supervision, and that the same is true and correct to the best of my belief.</i></p>	
<div style="display: flex; justify-content: space-between;"> <span>5272.74'</span> </div>		<p>Date of Survey 5/18/01</p>	
<div style="display: flex; justify-content: space-between;"> <span>5286.60'</span> </div>		<p>Signature and Seal of Professional Surveyor:</p>	
<div style="display: flex; justify-content: space-between;"> <span>1762'</span> </div>		<p>11393</p>	
<div style="display: flex; justify-content: space-between;"> <span>660'</span> </div>		<p>REGISTERED PROFESSIONAL SURVEYOR</p>	
<div style="display: flex; justify-content: space-between;"> <span>1762'</span> </div>		<p>Certificate Number</p>	

District I  
1901 Box 1980, Hobbs, NM 88241-1980  
District II  
811 South First, Artesia, NM 88210  
District III  
1000 Rio Brazos Rd., Aztec, NM 87410  
District IV  
2040 South Pacheco, Santa Fe, NM 87505

State of New Mexico  
Energy, Minerals & Natural Resources Department

OIL CONSERVATION DIVISION  
2040 South Pacheco  
Santa Fe, NM 87505

Form C-102  
Revised October 18, 1994  
Instructions on back  
Submit to Appropriate District Office  
State Lease - 4 Copies  
Fee Lease - 3 Copies

☐ AMENDED REPORT

WELL LOCATION AND ACREAGE DEDICATION PLAT

<sup>1</sup> API Number	<sup>2</sup> Pool Code 71599	<sup>3</sup> Pool Name Basin Dakota
<sup>4</sup> Property Code 009259	<sup>5</sup> Property Name SAN JUAN 31-6 UNIT	<sup>6</sup> Well Number 48M
<sup>7</sup> OGRID No. 017654	<sup>8</sup> Operator Name PHILLIPS PETROLEUM COMPANY	<sup>9</sup> Elevation 6280'

<sup>10</sup> Surface Location

UL or lot no. L	Section 2	Township 30N	Range 6W	Lot Idn	Feet from the 1762'	North/South line SOUTH	Feet from the 660'	East/West line WEST	County RIO ARriba
--------------------	--------------	-----------------	-------------	---------	------------------------	---------------------------	-----------------------	------------------------	----------------------

<sup>11</sup> Bottom Hole Location If Different From Surface

UL or lot no. L	Section	Township	Range	Lot Idn	Feet from the	North/South line	Feet from the	East/West line	County
<sup>12</sup> Dedicated Acres 320 S/2	<sup>13</sup> Joint or Infill Y	<sup>14</sup> Consolidation Code U	<sup>15</sup> Order No.						

NO ALLOWABLE WILL BE ASSIGNED TO THIS COMPLETION UNTIL ALL INTERESTS HAVE BEEN CONSOLIDATED OR A NON-STANDARD UNIT HAS BEEN APPROVED BY THE DIVISION

16	West	5280.00'	
8	7	6	5
5286.60'			5272.74'
Section 2			
South	E-347-46 160.0 acres	E-347-40	
660'		E-347-41	
1762'	N89°47'E	5264.16'	

<sup>17</sup> OPERATOR CERTIFICATION  
I hereby certify that the information contained herein is true and complete to the best of my knowledge and belief

*Patsy Clugston*  
Signature  
Patsy Clugston  
Printed Name  
Sr. Regulatory/Proration Clerk  
Title  
7-9-01  
Date

<sup>18</sup> SURVEYOR CERTIFICATION  
I hereby certify that the well location shown on this plat was plotted from field notes of actual surveys made by me or under my supervision, and that the same is true and correct to the best of my belief.

5/18/01  
Date of Survey  
Signature of Registered Professional Surveyor  
11393  
Certificate Number

# PHILLIPS PETROLEUM COMPANY

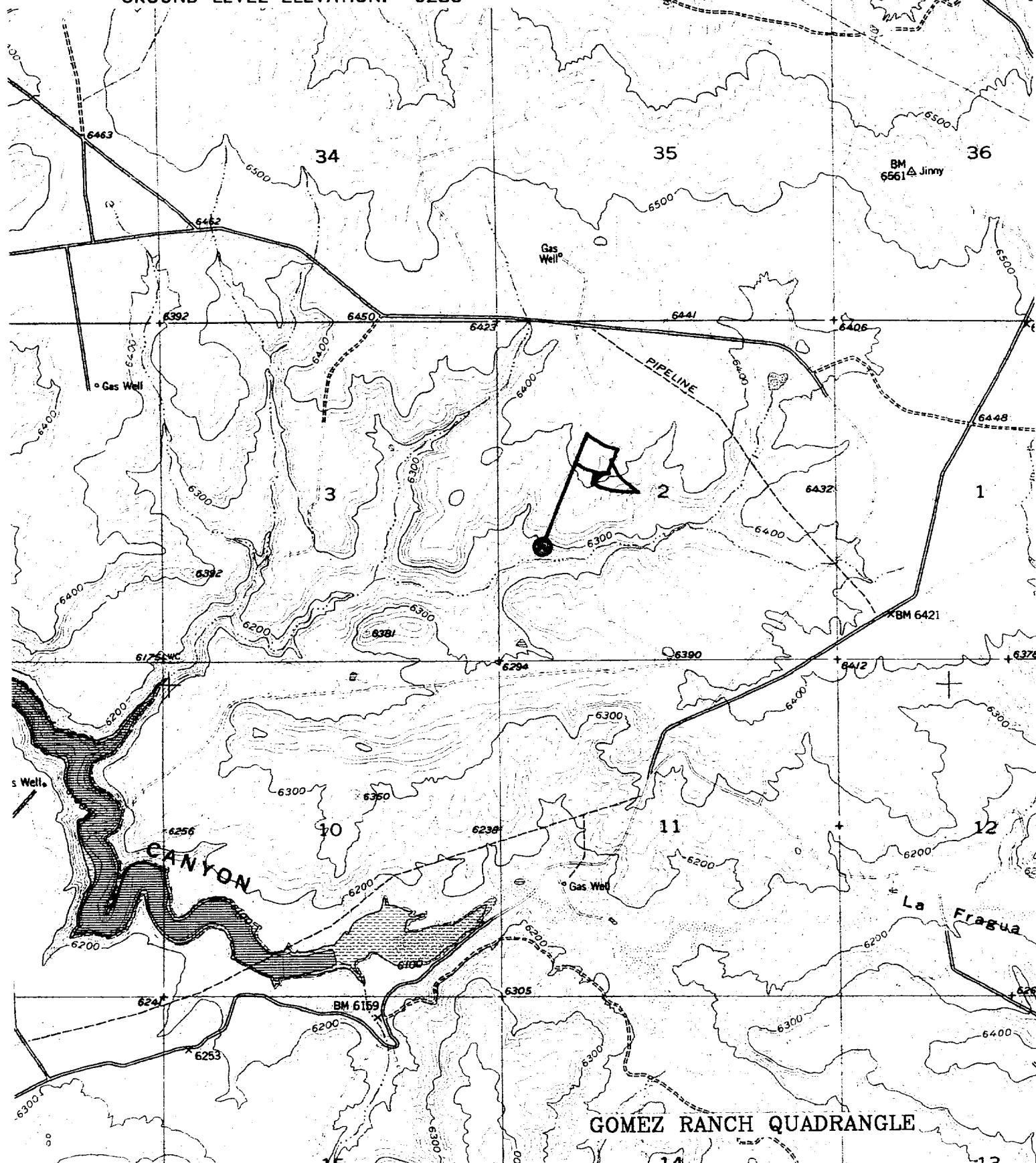
SAN JUAN 31-6 UNIT No. 48M

1762' FSL, 660' FWL

SW/4 SEC. 2, T-30-N, R-06-W, N.M.P.M.,

RIO ARriba COUNTY, NEW MEXICO

GROUND LEVEL ELEVATION: 6280'



## **BOP AND RELATED EQUIPMENT CHECK LIST**

### **3M SYSTEM:**

2 hydr. rams (pipe & blind) or hydr. ram and annular with blind ram on bottom

Kill Line (2-inch minimum)

1 kill line valve (2-inch minimum)

1 choke line valve

2 chokes (refer to diagram in attachment 1) on choke manifold

Upper kelly cock valve in open position with handle available

Safety valve (in open position) and subs to fit all drill strings in use (with handle available)

Pressure gauged on choke manifold

2 inch minimum choke line

Fill-up line above the uppermost preventer

*The BOPs will be pressure tested according to Onshore Order #2 III, A 1 and 30% safety factor.*