

UNITED STATES
DEPARTMENT OF THE INTERIOR
BUREAU OF LAND MANAGEMENT

APPLICATION FOR PERMIT TO DRILL, DEEPEN, OR PLUG BACK

1a. Type of Work DRILL	5. Lease Number SF-080537 Unit Reporting Number
1b. Type of Well GAS	6. If Indian, All. or Tribe
2. Operator BURLINGTON RESOURCES Oil & Gas Company	7. Unit Agreement Name San Juan 30-5 Unit
3. Address & Phone No. of Operator PO Box 4289, Farmington, NM 87499 (505) 326-9700	8. Farm or Lease Name San Juan 30-5 Unit 9. Well Number 268
4. Location of Well 1640' FSL, 1720' FWL Latitude 36° 47.7, Longitude 107° 18.7	10. Field, Pool, Wildcat Basin Fruitland Coal 11. Sec., Twn, Rge, Mer. (NMPM) K Sec. 24, T-30-N, R-5-W API # 30-039-26508
14. Distance in Miles from Nearest Town 25 miles from Gobernador	12. County Rio Arriba 13. State NM
15. Distance from Proposed Location to Nearest Property or Lease Line 1640'	17. Acres Assigned to Well 320 W/2
16. Acres in Lease	
18. Distance from Proposed Location to Nearest Well, Drig, Compl, or Applied for on this Lease 2600'	
19. Proposed Depth 3770' -	20. Rotary or Cable Tools Rotary
21. Elevations (DF, FT, GR, Etc.) 7034' GR	22. Approx. Date Work will Start DRIILLING WORK IS UNDERWAY AND SUBJECT TO COMPLIANCE WITH ATTACHED "GENERAL REQUIREMENTS"
23. Proposed Casing and Cementing Program See Operations Plan attached	
24. Authorized by: <u>Regan Cole</u> Regulatory/Compliance Supervisor	<u>8-9-00</u> Date

PERMIT NO. _____

APPROVAL DATE _____

APPROVED BY /s/ Jim Lovato

TITLE _____

DATE MAR - 9

Archaeological Report to be submitted

Threatened and Endangered Species Report to be submitted

NOTE: This format is issued in lieu of U.S. BLM Form 3160-3

Title 18 U.S.C. Section 1001, makes it a crime for any person knowingly and willfully to make to any department or agency of the United States any false, fictitious or fraudulent statements or presentations as to any matter within its jurisdiction.

District I
PO Box 1980, Hobbs, NM 88241-1980

District II
PO Drawer DD, Artesia, NM 88211-0719

District III
1000 Rio Brazos Rd., Aztec, NM 87410

District IV
PO Box 2088, Santa Fe, NM 87504-2088

State of New Mexico
Energy, Minerals & Natural Resources Department

OIL CONSERVATION DIVISION

PO Box 2088
Santa Fe, NM 87504-2088

Form C-102
Revised February 21, 1994
Instructions on back
Submit to Appropriate District Office
State Lease - 4 Copies
Fee Lease - 3 Copies

☐ AMENDED REPORT

WELL LOCATION AND ACREAGE DEDICATION PLAT

¹ API Number 30-039- 26-528	² Pool Code 71629	³ Pool Name Basin Fruitland Coal
⁴ Property Code 17260	⁵ Property Name SAN JUAN 30-5 UNIT	⁶ Well Number 268
⁷ OSRID No. 14538	⁸ Operator Name BURLINGTON RESOURCES OIL & GAS COMPANY	⁹ Elevation 7034

¹⁰ Surface Location

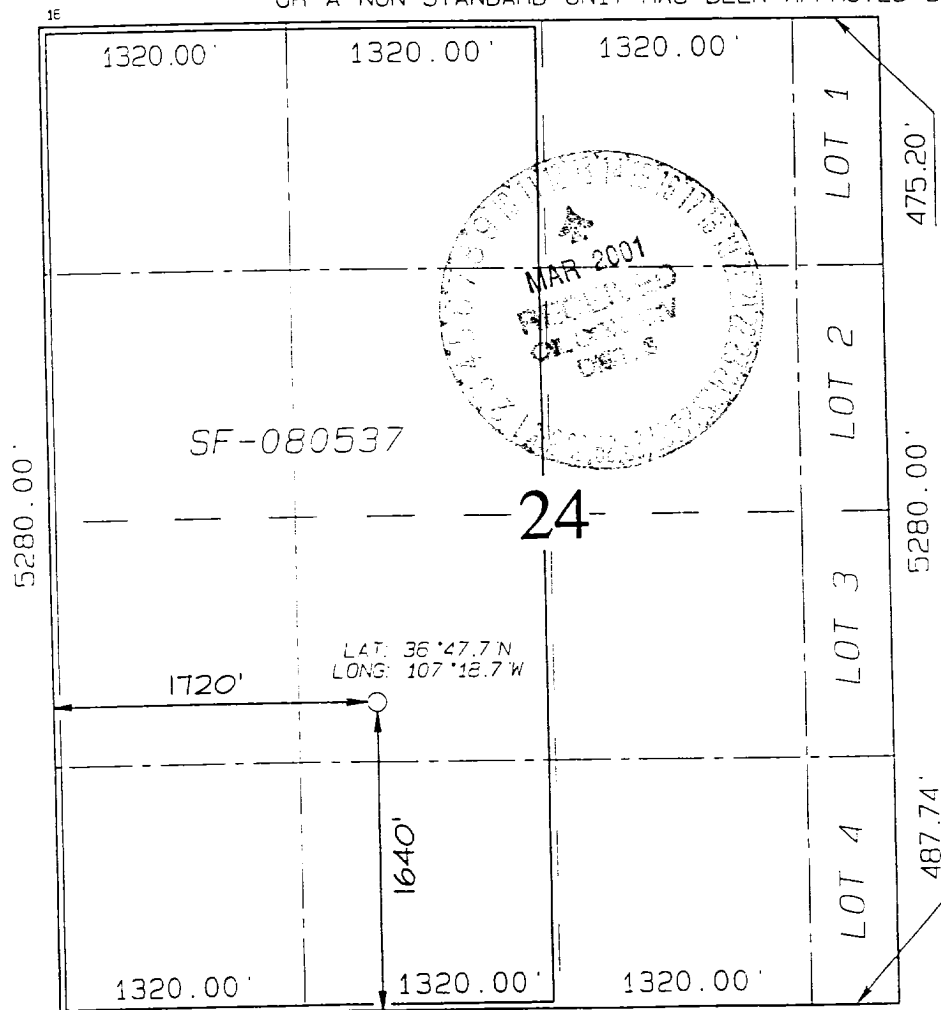
UL or lot no.	Section	Township	Range	Lot Idn	Feet from the	North/South line	Feet from the	East/West line	County
K	24	30N	5W		1640	SOUTH	1720	WEST	RIO ARriba

¹¹ Bottom Hole Location If Different From Surface

UL or lot no.	Section	Township	Range	Lot Idn	Feet from the	North/South line	Feet from the	East/West line	County

¹² Dedicated Acres W/320	¹³ Joint or Infill	¹⁴ Consolidation Code	¹⁵ Order No.
--	-------------------------------	----------------------------------	-------------------------

NO ALLOWABLE WILL BE ASSIGNED TO THIS COMPLETION UNTIL ALL INTERESTS HAVE BEEN CONSOLIDATED OR A NON-STANDARD UNIT HAS BEEN APPROVED BY THE DIVISION



¹⁷ OPERATOR CERTIFICATION
I hereby certify that the information contained herein is true and complete to the best of my knowledge and belief.

Signature

Peggy Cole

Printed Name

Regulatory Supervisor

Title

Date

¹⁸ SURVEYOR CERTIFICATION

I hereby certify that the well location shown on this plat was plotted from field notes of actual surveys made by me or under my supervision, and that the same is true and correct to the best of my belief.

JUNE 9, 2000

Date of Survey

Signature and Seal of Professional Surveyor

NEALE C. EDWARDS
NEW MEXICO
6857
REGISTERED PROFESSIONAL SURVEYOR

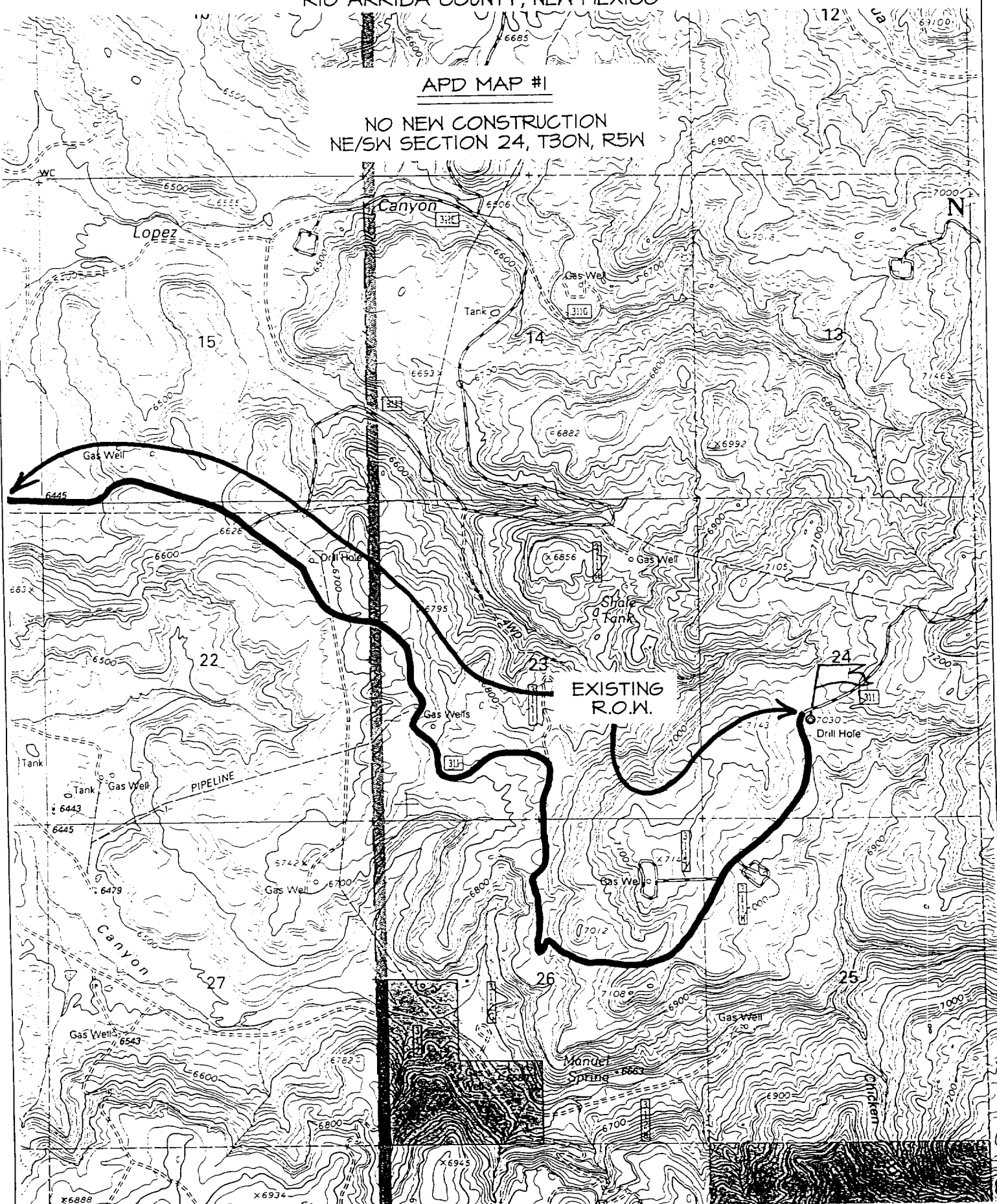
Certificate Number 6857

BURLINGTON RESOURCES OIL & GAS COMPANY SAN JUAN 30-5 UNIT #268

1640' FSL & 1720' FWL, SECTION 24, T30N, R5W, N.M.P.M.
RIO ARriba COUNTY, NEW MEXICO

APD MAP #1

NO NEW CONSTRUCTION
NE/SW SECTION 24, T30N, R5W



OPERATIONS PLAN

Well Name: San Juan 30-5 Unit #268
Location: 1640' FSL, 1720' FWL, Section 24, T-30-N, R-5-W
Latitude 36° 47.7, Longitude 107° 18.7
Rio Arriba County, NM
Formation: Basin Fruitland Coal
Elevation: 7034' GR

Formation:	Top	Bottom	Contents
Surface	San Jose	3112'	
Ojo Alamo	3112'	3319'	aquifer
Kirtland	3319'	3616'	gas
Fruitland	3616'	3678'	gas
Intermediate casing	3628'		
Basal Coal	3750'		
Total Depth	3770'		

Logging Program:

Open hole - GR, CDL - TD to intermediate casing
Mud log - TD to intermediate casing

Coring Program: none

Mud Program:

Interval	Type	Weight	Vis.	Fluid Loss
0- 200'	Spud	8.4-9.0	40-50	no control
200-3770'	Non-dispersed	8.4-9.0	30-60	no control

Casing Program (as listed, the equivalent, or better):

Hole Size	Depth Interval	Csq. Size	Wt.	Grade
12 1/4"	0' - 200'	9 5/8"	32.3#	WC-50
8 3/4"	0' - 3628'	7"	20.0#	J-55
6 1/4"	3528' - 3770'	5 1/2"	15.5#	K-55

Tubing Program:

0' - 3770'	2 3/8"	4.7#	J-55
------------	--------	------	------

Float Equipment: 9 5/8" surface casing - saw tooth guide shoe. Centralizers will be run in accordance with Onshore Order #2.

7" intermediate casing - guide shoe and self-fill float collar. Three centralizers run every fourth joint above shoe. Two turbolizing type centralizers - one below and one into the base of the Ojo Alamo @ 3319'. Standard centralizers thereafter every fourth joint up to the base of the surface pipe.

5 1/2" production casing - Pre-drilled liner run to the 7" casing with an overlap. Liner hanger is a slip grip type.

Wellhead Equipment: 9 5/8" x 7" x 2 3/8" x 11" 3000 psi xmas tree assembly.

Cementing:

9 5/8" surface casing - cement with 160 sx Class "B" cement with ¼ pps cellophane and 3% calcium chloride (188 cu.ft. of slurry, 200% excess to circulate to surface). WOC 8 hrs. Test casing to 600 psi/30 minutes.

7" intermediate casing - lead w/371 sacks Class "B" with 3% sodium metasilicate, 10 pps Gilsonite, and 1/2 pps sack Flocele. Tail with 90 sacks 50/50 Class "B" Pozmix with 2% gel, 2% calcium chloride, 1/4 pps flocele and 7 pps Gilsonite (1227 cu.ft., 100% excess to circulate to surface).

5 1/2" liner - uncemented.

BOP and tests:

Surface to intermediate TD - 11" 2000 psi (minimum) double gate BOP stack (Reference Figure #1). Prior to drilling out surface casing, test rams to 600#/30 min.

Intermediate TD to Total Depth - 7 1/6" 3000 psi (minimum) double gate BOP stack (Reference Figure #2). Prior to drilling out intermediate casing, test blind rams and casing to 2500 psi for 30 minutes; all pipe rams and casing to 2500 psi for 30 minutes each.

From surface to TD - choke manifold (Reference Figure #3).

Pipe rams will be actuated at least once each day and blind rams actuated once each trip to test proper functioning. An upper kelly cock valve with handle and drill string safety valves to fit each drill string will be maintained and available on the rig floor.

Additional information:

- The Fruitland Coal formation will be completed.
- Anticipated pore pressure for the Fruitland is 1000 psi.
- This gas is dedicated.
- The west half of section 24 is dedicated to this well.

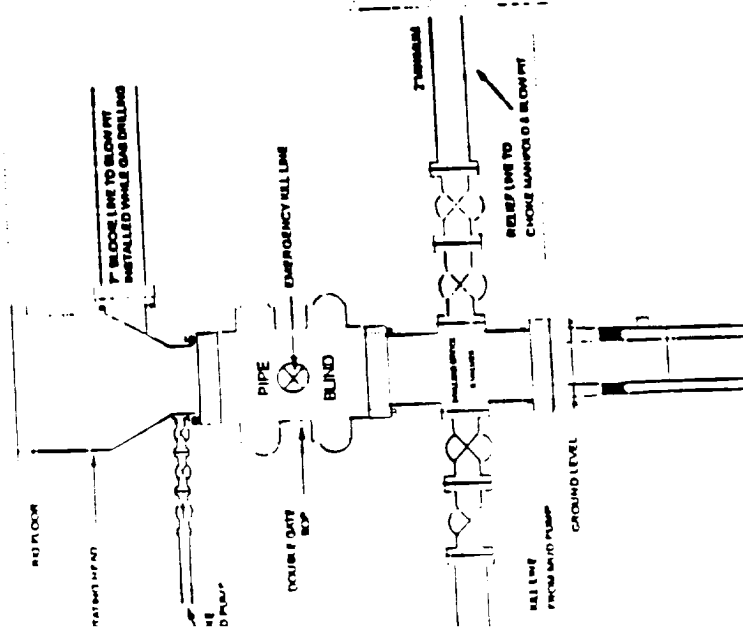
Drilling Engineer:

Steve Cobble

Date:

8/9/2000

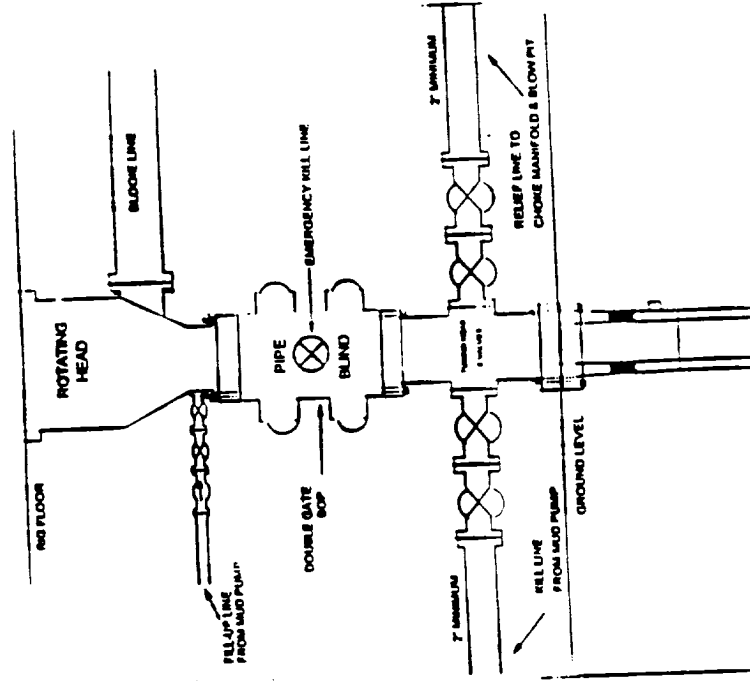
BOP Configuration 2M psi System



1000 psi minimum working pressure double gate BOP to be equipped with 2000 psi minimum working pressure double gate BOP to be equipped with blind and pipe rams. A Schaeffer Type 50 or equivalent rotating head to be installed on the top of the BOP. All equipment is 2000 psi working pressure.

FIGURE #1

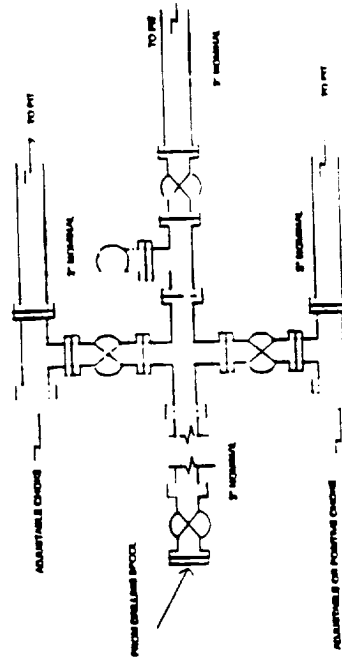
BOP Configuration 2M psi System



Minimum BOP Installation for Completion operations. 7 1/16" Bore (6" Nominal). 2000 psi minimum working pressure double gate BOP to be equipped with blind and pipe rams.

FIGURE #2

Choke Manifold Configuration 2M System



Minimum choke manifold installation from surface to Total Depth. 2\"/>

Figure #3