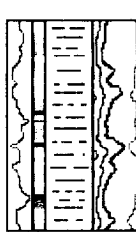
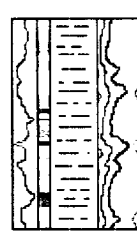


SOFTROCK GEOLOGICAL SERVICES, INC.



591 County Rd. 233 Durango, CO 81301

(970) 247- 8868 fax 247- 5108



Scale 1:240 (5"=100') Imperial

Well Name: San Juan 30-5 Unit No. 214
 Location: SESW Sec. 5 T30N-R5W
 Licence Number: Region: San Juan Basin
 Spud Date: 12/15/2000 Drilling Completed: 12/21/2000
 Surface Coordinates: 0663' FSL
 1842' FWL
 Bottom Hole Coordinates:
 Ground Elevation (ft): 6444' K.B. Elevation (ft): 6460'
 Logged Interval (ft): 3082' To: 3224' Total Depth (ft): 3224'
 Formation: Fruitland Formation
 Type of Drilling Fluid: Air/Mist
 Printed by MUD.LOG from WellSight Systems Inc. 1-800-447-1534 www.wellsight.com

OPERATOR

Company: Phillips Petroleum Company
 Address: 5525 Highway 64
 Farmington, NM 87401

GEOLOGIST

Name: Ron Horton, Peter Falk
 Company: Softrock Geological Services
 Address: 591 CR 233
 Durango, CO 81301
 (970) 247-8868 247-5108 fax

Hole Data:

Surface to 235' 12-1/4"
 235' to 3082' 8-3/4"
 3082' to 3224' (TD) 6-1/4"

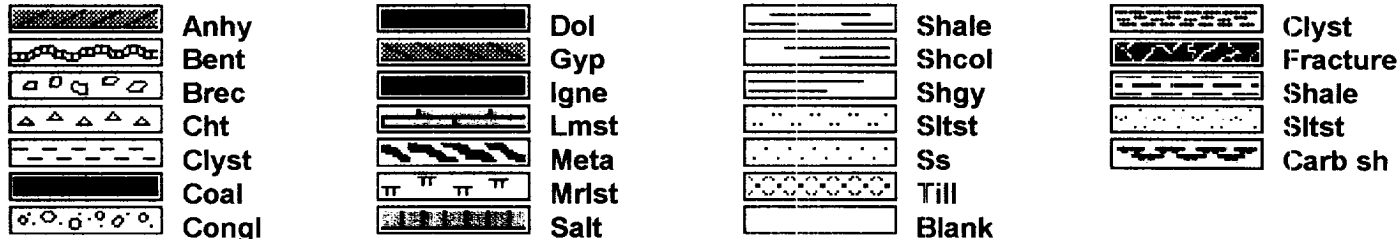
Casing Data:

Surface 9-5/8" set at 229'
 Intermediate 7" set at 3077'

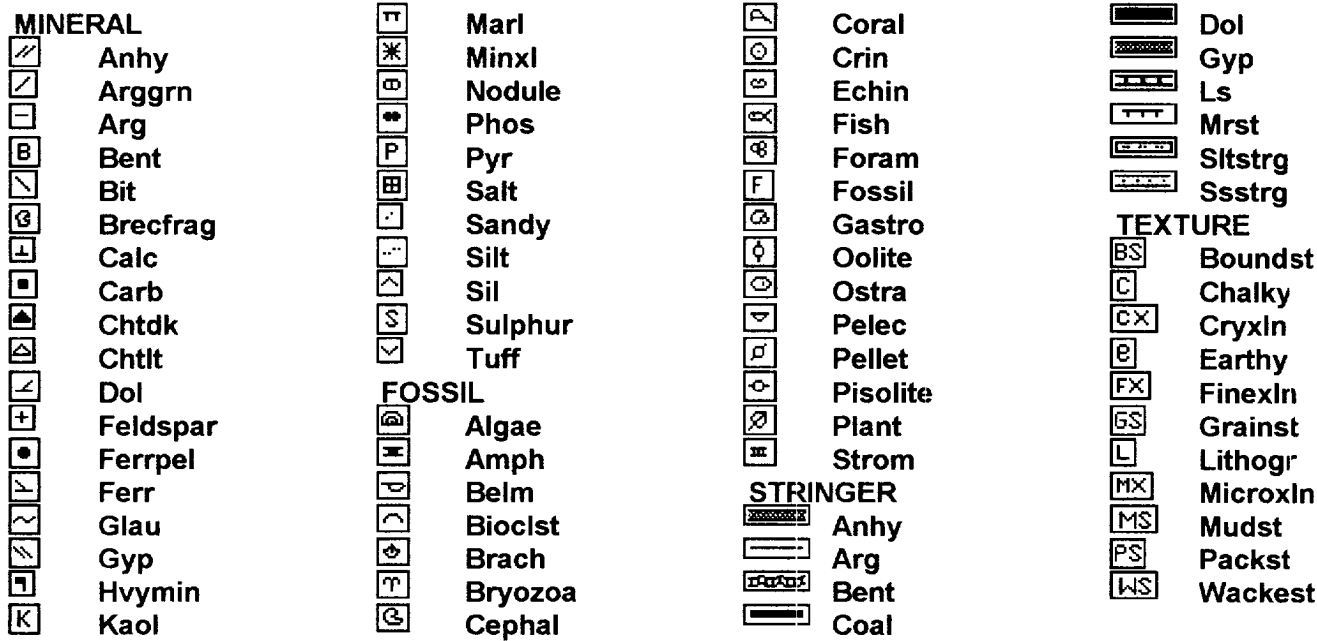
Comments:

Key Energy Services Rig #53
 Company Representative David Green

ROCK TYPES



ACCESSORIES



OTHER SYMBOLS

