

UNITED STATES  
DEPARTMENT OF THE INTERIOR  
BUREAU OF LAND MANAGEMENT

APPLICATION FOR PERMIT TO DRILL, DEEPEN, OR PLUG BACK

1a. Type of Work DRILL	5. Lease Number SF-080537 Unit Reporting Number
1b. Type of Well GAS	6. If Indian, All. or Tribe
2. Operator <b>BURLINGTON RESOURCES</b> Oil & Gas Company	7. Unit Agreement Name San Juan 30-5 Unit
3. Address & Phone No. of Operator PO Box 4289, Farmington, NM 87499 (505) 326-9700	8. Farm or Lease Name San Juan 30-5 Unit 9. Well Number 267
4. Location of Well 2125' FNL, 990' FEL, Latitude 36° 48.0, Longitude 107° 18.4	10. Field, Pool, Wildcat Basin Fruitland Coal 11. Sec., Twn, Rge, Mer. (NMPM) 6 Sec. 24, T-30-N, R-5-W API # 30-039-26514
14. Distance in Miles from Nearest Town 25 miles from Gobernador	12. County Rio Arriba 13. State NM
15. Distance from Proposed Location to Nearest Property or Lease Line 990'	17. Acres Assigned to Well 218.36 E/2
16. Acres in Lease	
18. Distance from Proposed Location to Nearest Well, Drlg, Compl, or Applied for on this Lease 4800'	
19. Proposed Depth 3914'	20. Rotary or Cable Tools Rotary
21. Elevations (DF, FT, GR, Etc.) 7186' GR	22. Approx. Date Work will Start
23. Proposed Casing and Cementing Program See Operations Plan attached	
24. Authorized by: <u>[Signature]</u> Regulatory/Compliance Supervisor	Date 8-9-00

PERMIT NO. \_\_\_\_\_ APPROVAL DATE 12/13/01  
APPROVED BY [Signature] TITLE AFM DATE 12/11/01

Archaeological Report to be submitted

Threatened and Endangered Species Report to be submitted

NOTE: This format is issued in lieu of U.S. BLM Form 3160-3

Title 18 U.S.C. Section 1001, makes it a crime for any person knowingly and willfully to make to any department or agency of the United States any false, fictitious or fraudulent statements or presentations as to any matter within its jurisdiction.

REVIEWED BY USP - AC factor = 68%  
NMCO

District I  
PO Box 1980, Hobbs, NM 88241-1980

State of New Mexico  
Energy, Minerals & Natural Resources Department

Form C-102

Revised February 21, 1994

Instructions on back

Submit to Appropriate District Office

State Lease - 4 Copies

Fee Lease - 3 Copies

District II  
PO Drawer 00, Artesia, NM 88211-0719

OIL CONSERVATION DIVISION

PO Box 2088

Santa Fe, NM 87504-2088

District III  
1000 Rio Brazos Rd., Aztec, NM 87410

District IV  
PO Box 2088, Santa Fe, NM 87504-2088

☐ AMENDED REPORT

WELL LOCATION AND ACREAGE DEDICATION PLAT

<sup>1</sup> API Number 30-039- 26514	<sup>2</sup> Pool Code 71629	<sup>3</sup> Pool Name Basin Fruitland Coal
<sup>4</sup> Property Code 17260	<sup>5</sup> Property Name SAN JUAN 30-5 UNIT	<sup>6</sup> Well Number 267
<sup>7</sup> OGARD No. 14538	<sup>8</sup> Operator Name BURLINGTON RESOURCES OIL & GAS COMPANY	<sup>9</sup> Elevation 7186'

<sup>10</sup> Surface Location

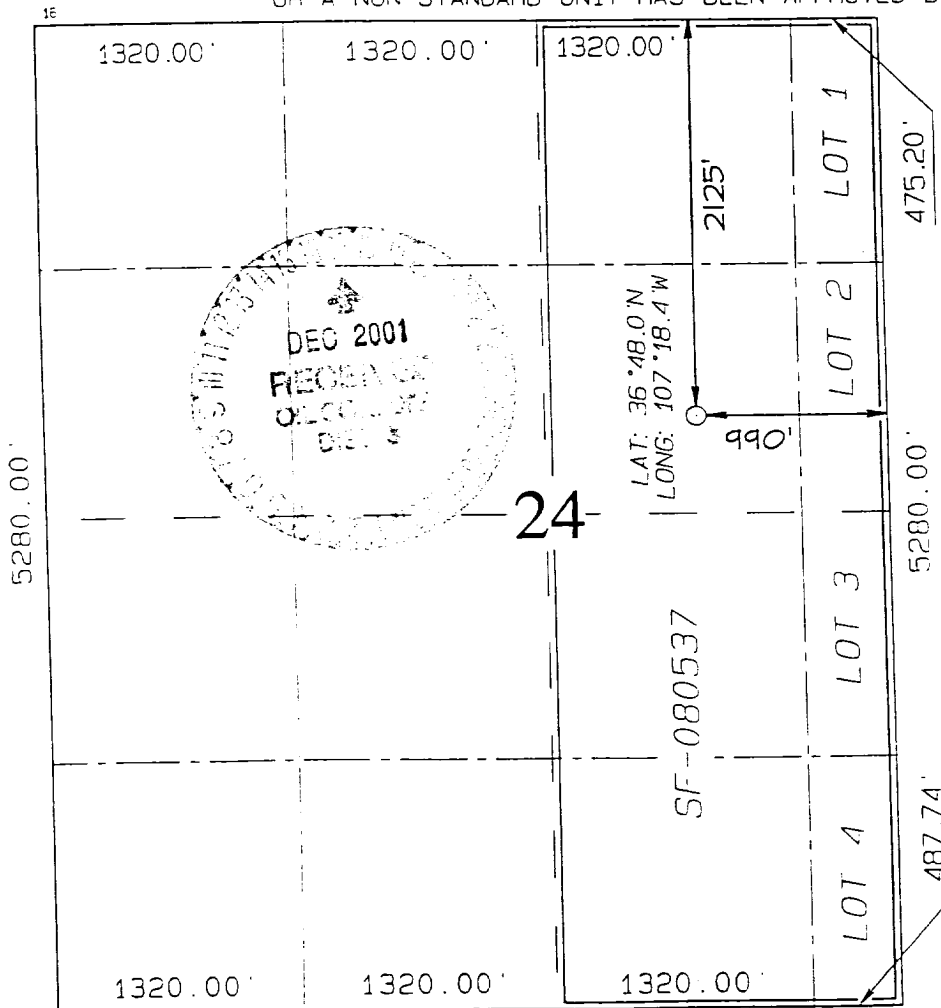
UL or lot no	Section	Township	Range	Lot Idn	Feet from the	North/South line	Feet from the	East/West line	County
G	24	30N	5W		2125	NORTH	990	EAST	RIC ARriba

<sup>11</sup> Bottom Hole Location If Different From Surface

UL or lot no	Section	Township	Range	Lot Idn	Feet from the	North/South line	Feet from the	East/West line	County

<sup>12</sup> Dedicated Acres E/218.36	<sup>13</sup> Joint or Infill	<sup>14</sup> Consolidation Code	<sup>15</sup> Order No.

NO ALLOWABLE WILL BE ASSIGNED TO THIS COMPLETION UNTIL ALL INTERESTS HAVE BEEN CONSOLIDATED OR A NON-STANDARD UNIT HAS BEEN APPROVED BY THE DIVISION



<sup>17</sup> OPERATOR CERTIFICATION

I hereby certify that the information contained herein is true and complete to the best of my knowledge and belief

*Peggy Cole*

Signature  
Peggy Cole

Printed Name

Regulatory Supervisor  
Title

8-4-00

Date

<sup>18</sup> SURVEYOR CERTIFICATION

I hereby certify that the well location shown on this plat was plotted from field notes of actual surveys made by me or under my supervision and that the same is true and correct to the best of my belief

JUNE 9, 2000

Date of Survey

Signature and Seal of Surveyor

NEALE C. EDWARDS  
NEW MEXICO  
6857  
REGISTERED PROFESSIONAL SURVEYOR

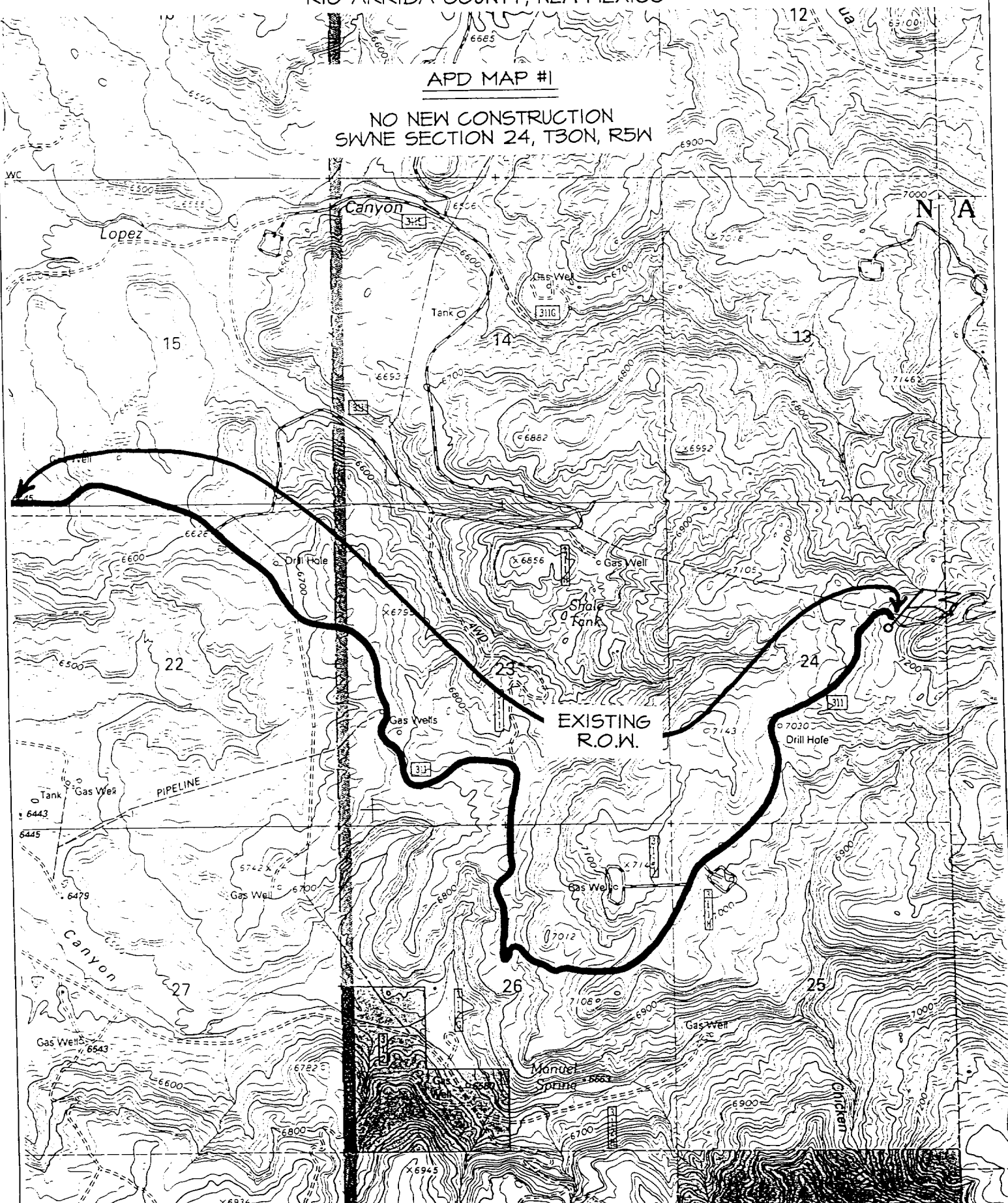
Certificate Number 6857

# BURLINGTON RESOURCES OIL & GAS COMPANY SAN JUAN 30-5 UNIT #267

2125' FNL & 990' FEL, SECTION 24, T30N, R5W, N.M.P.M.  
RIO ARriba COUNTY, NEW MEXICO

APD MAP #1

NO NEW CONSTRUCTION  
SWNE SECTION 24, T30N, R5W



## OPERATIONS PLAN

**Well Name:** San Juan 30-5 Unit #267  
**Location:** 2125' FNL, 990' FEL, Section 24, T-30-N, R-5-W  
Latitude 36° 48.0, Longitude 107° 18.4  
Rio Arriba County, NM  
**Formation:** Basin Fruitland Coal  
**Elevation:** 7186' GR

Formation:	Top	Bottom	Contents
Surface	San Jose	3258'	
Ojo Alamo	3258'	3474'	aquifer
Kirtland	3474'	3748'	gas
Fruitland	3478'	3894'	gas
Intermediate casing	3781'		
Basal Coal	3894'		
Total Depth	3914'		

**Logging Program:**

Open hole - GR, CDL - TD to intermediate casing  
Mud log - TD to intermediate casing

**Coring Program:** none

**Mud Program:**

<u>Interval</u>	<u>Type</u>	<u>Weight</u>	<u>Vis.</u>	<u>Fluid Loss</u>
0- 200'	Spud	8.4-9.0	40-50	no control
200-3914'	Non-dispersed	8.4-9.0	30-60	no control

**Casing Program (as listed, the equivalent, or better):**

<u>Hole Size</u>	<u>Depth Interval</u>	<u>Csq.Size</u>	<u>Wt.</u>	<u>Grade</u>
12 1/4"	0' - 200'	9 5/8"	32.3#	WC-50
8 3/4"	0' - 3781'	7"	20.0#	J-55
6 1/4"	3681' - 3914'	5 1/2"	15.5#	K-55

**Tubing Program:**

0' - 3914'	2 3/8"	4.7#	J-55
------------	--------	------	------

**Float Equipment:** 9 5/8" surface casing - saw tooth guide shoe. Centralizers will be run in accordance with Onshore Order #2.

7" intermediate casing - guide shoe and self-fill float collar. Three centralizers run every fourth joint above shoe. Two turbolizing type centralizers - one below and one into the base of the Ojo Alamo @ 3474'. Standard centralizers thereafter every fourth joint up to the base of the surface pipe.

5 1/2" production casing - Pre-drilled liner run to the 7" casing with an overlap. Liner hanger is a slip grip type.

**Wellhead Equipment:** 9 5/8" x 7" x 2 3/8" x 11" 3000 psi xmas tree assembly.

**Cementing:**

9 5/8" surface casing - cement with 159 sx Class "B" cement with ¼ pps cellophane and 3% calcium chloride (188 cu.ft. of slurry, 200% excess to circulate to surface). WOC 8 hrs. Test casing to 600 psi/30 minutes.

7" intermediate casing - lead w/388 sacks Class "B" with 3% sodium metasilicate, 10 pps Gilsonite, and 1/2 pps sack Flocele. Tail with 90 sacks 50/50 Class "B" Pozmix with 2% gel, 2% calcium chloride, 1/4 pps flocele and 7 pps Gilsonite (1279 cu.ft., 100% excess to circulate to surface).

5 1/2" liner - uncemented.

**BOP and tests:**

Surface to intermediate TD - 11" 2000 psi (minimum) double gate BOP stack (Reference Figure #1). Prior to drilling out surface casing, test rams to 600#/30 min.

Intermediate TD to Total Depth - 7 1/6" 3000 psi (minimum) double gate BOP stack (Reference Figure #2). Prior to drilling out intermediate casing, test blind rams and casing to 2500 psi for 30 minutes; all pipe rams and casing to 2500 psi for 30 minutes each.

From surface to TD - choke manifold (Reference Figure #3).

Pipe rams will be actuated at least once each day and blind rams actuated once each trip to test proper functioning. An upper kelly cock valve with handle and drill string safety valves to fit each drill string will be maintained and available on the rig floor.

**Additional information:**

- The Fruitland Coal formation will be completed.
- Anticipated pore pressure for the Fruitland is 1000 psi.
- This gas is dedicated.
- The east half of section 24 is dedicated to this well.

Drilling Engineer:

Steve C. Bell

Date: 8/9/2000