

UNITED STATES  
DEPARTMENT OF THE INTERIOR  
BUREAU OF LAND MANAGEMENT

APPLICATION FOR PERMIT TO DRILL OR DEEPEN

1a. TYPE OF WORK

DRILL ☒

DEEPEN ☐

b. TYPE OF WELL

OIL  
WELL ☐

GAS  
WELL ☒

OTHER

SINGLE  
ZONE ☒

MULTIPLE  
ZONE ☐

2. NAME OF OPERATOR

ENERGEN RESOURCES CORPORATION

3. ADDRESS AND TELEPHONE NO.

2198 Bloomfield Highway; Farmington, NM 87401

4. LOCATION OF WELL (Report location clearly and in accordance with any State requirements.)  
At surface

1205' FNL, 905' FWL

At proposed prod. zone

14. DISTANCE IN MILES AND DIRECTION FROM NEAREST TOWN OR POST OFFICE\*

Twelve (12) Miles NE of Gobernador, New Mexico

15. DISTANCE FROM PROPOSED\*

LOCATION TO NEAREST  
PROPERTY OR LEASE LINE, FT.  
(Also to nearest drlg. unit line, if any) 905'

16. NO. OF ACRES IN LEASE

1178.30

17. NO. OF ACRES ASSIGNED  
TO THIS WELL

160

18. DISTANCE FROM PROPOSED LOCATION\*

TO NEAREST WELL, DRILLING, COMPLETED,  
OR APPLIED FOR, ON THIS LEASE, FT. 2000'

19. PROPOSED DEPTH

4708' -

20. ROTARY OR CABLE TOOLS

Rotary

21. ELEVATIONS (Show whether DF, RT, GR, etc.)

7461' GR

22. APPROX. DATE WORK WILL START\*

23. PROPOSED CASING AND CEMENTING PROGRAM

SIZE OF HOLE	GRADE SIZE OF CASING	WEIGHT PER FOOT	SETTING DEPTH	QUANTITY OF CEMENT
12 1/4"	9 5/8"	36#	200'	130 cu. ft., circ. to surface
7 7/8"	4 1/2"	10.5#	4708' -	1609 cu. ft., 2 stages - Circulate

This action is subject to technical and  
procedural review pursuant to 40 CFR 165.3  
and appeal pursuant to 40 CFR 165.4.

DRILLING OPERATIONS AUTHORIZED ARE  
SUBJECT TO THE CONDITIONS WITH ATTACHED  
"GENERAL INSTRUCTIONS"

Selectively perforate and sand water fracture the Pictured Cliffs Formation.

This gas is dedicated.

A Williams Field Service Pipeline ROW Plat is attached.

THIS IS AN EXPEDITED APD.

IN ABOVE SPACE DESCRIBE PROPOSED PROGRAM: If proposal is to deepen, give data on present productive zone and proposed new productive zone. If proposal is to drill or deepen directionally, give pertinent data on subsurface locations and measured and true vertical depths. Give blowout preventer program, if any.

24.

SIGNED

*Jim Graham*

TITLE Drilling & Completion Foreman

DATE

12-8-00

(This space for Federal or State office use)

PERMIT NO. \_\_\_\_\_

APPROVAL DATE \_\_\_\_\_

Application approval does not warrant or certify that the applicant holds legal or equitable title to those rights in the subject lease which would entitle the applicant to conduct operations thereon.

CONDITIONS OF APPROVAL, IF ANY:

APPROVED BY

/s/ Joel Farrell

TITLE

\*See Instructions On Reverse Side

DATE

AUG - 6

Title 18 U.S.C. Section 1001, makes it a crime for any person knowingly and willfully to make to any department or agency of the United States any false, fictitious or fraudulent statements or representations as to any matter within its jurisdiction.

District II  
PO Drawer 00, Artesia, NM 88211-0719

## OIL CONSERVATION DIVISION

PO Box 2088  
Santa Fe, NM 87504-2088

Submit to Appropriate District Office  
State Lease - 4 Copies  
Fee Lease - 3 Copies

District III  
1000 Rio Brazos Rd., Aztec, NM 87410

District IV  
PO Box 2088, Santa Fe, NM 87504-2088

☐ AMENDED REPORT

200 DEC 11 PM 1:49  
070 FARMINGTON NM

## WELL LOCATION AND ACREAGE DEDICATION PLAT

API Number <b>30-039-26607</b>		Pool Code 72400	Pool Name East Blanco Pictured Cliffs
Property Code <b>21994</b>	Property Name SAN JUAN 30-4 UNIT		Well Number 49
GRID No. 162928	Operator Name ENERGEN RESOURCES CORPORATION		Elevation 7451'

## 10 Surface Location

UL or lot no.	Section	Township	Range	Lot Idn	Feet from the	North/South line	Feet from the	East/West line	County
D	9	30N	4W		1205	NORTH	905	WEST	RIO ARRIBA

## 11 Bottom Hole Location If Different From Surface

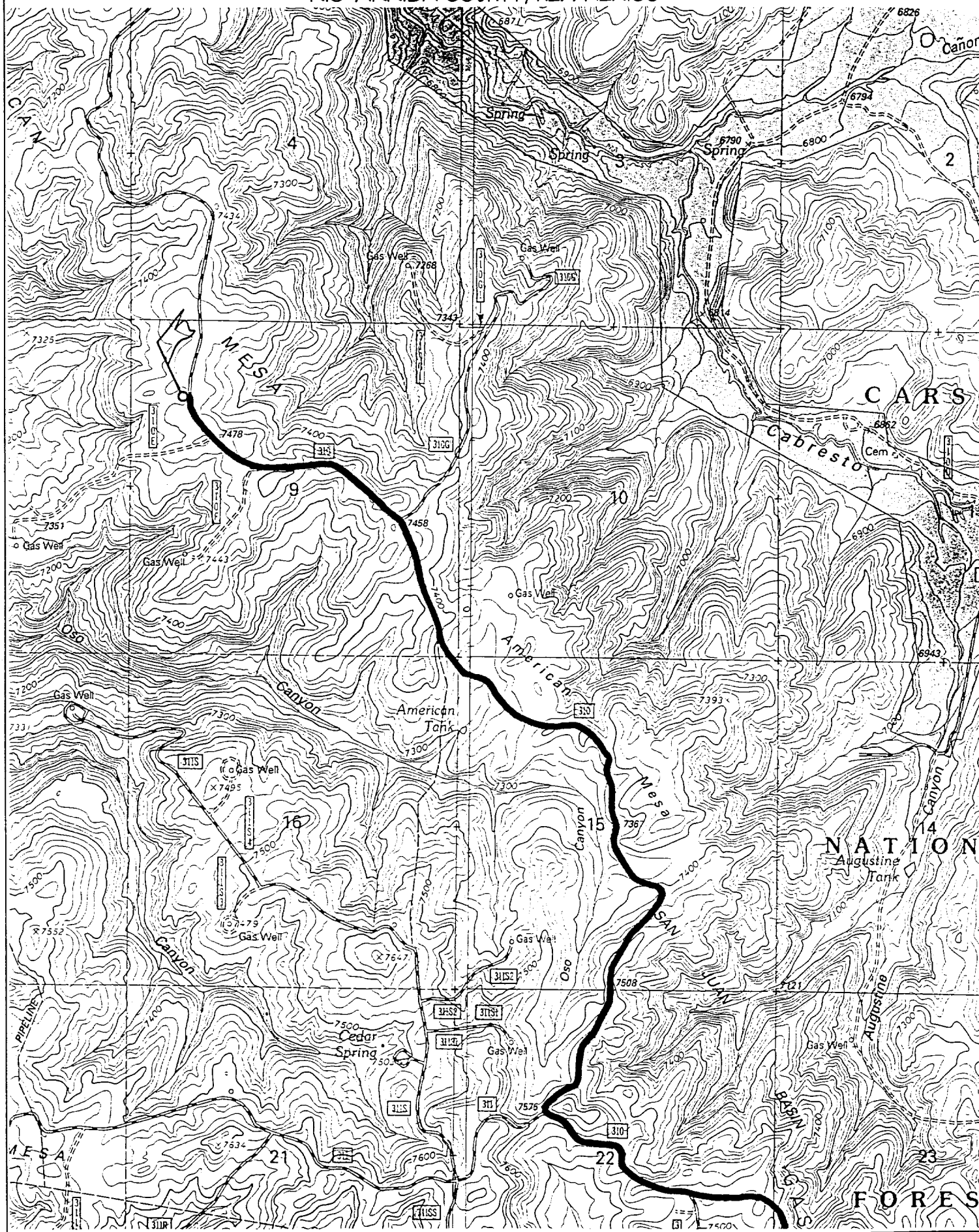
UL or lot no.	Section	Township	Range	Lot Idn	Feet from the	North/South line	Feet from the	East/West line	County

12 Dedicated Acres 160	13 Joint or Infill	14 Consolidation Code	15 Order No.
---------------------------	--------------------	-----------------------	--------------

NO ALLOWABLE WILL BE ASSIGNED TO THIS COMPLETION UNTIL ALL INTERESTS HAVE BEEN CONSOLIDATED OR A NON-STANDARD UNIT HAS BEEN APPROVED BY THE DIVISION

		<b>17 OPERATOR CERTIFICATION</b> I hereby certify that the information contained herein is true and complete to the best of my knowledge and belief.  Signature Gary Brink Printed Name Production Superintendant Title Date 12/8/01
		<b>18 SURVEYOR CERTIFICATION</b> I hereby certify that the well location shown on this plat was plotted from field notes of actual surveys made by me or under my supervision, and that the same is true and correct to the best of my belief. AUGUST 3, 2000 Date of Survey  Signature and Seal of Professional Surveyor  Certificate 6857

1205' FNL & 905' FWL, SECTION 9, T30N, R4W, N.M.P.M.  
RIO ARRIBA COUNTY, NEW MEXICO



## OPERATIONS PLAN

WELL NAME: San Juan 30-4 Unit #49

LOCATION: 1205' FNL, 905' FWL, Section 9, T30N, R4W, Rio Arriba County, NM

FIELD: East Blanco Pictured Cliffs

ELEVATION: 7461' GL

### FORMATION TOPS:

Surface	San Jose
Nacimiento	2388
Ojo Alamo	3628
Kirtland	3843
Fruitland	4088
Pictured Cliffs	4258
Lewis	4608
Total Depth	4708

### LOGGING PROGRAM:

Open Hole Logs:

Surface to TD: HRI/SP/GR, CNT/LDT/MLT

Mud Logs: 200' above Ojo Alamo to total depth

Coring: None

Natural Gauges: None

MUD PROGRAM: Fresh water low solids mud from surface to T. D. 9.0-9.2 PPG.

### CASING PROGRAM:

<u>HOLE SIZE</u>	<u>DEPTH</u>	<u>CSG SIZE</u>	<u>WT.</u>	<u>GRADE</u>
12 ¼"	200'	9 5/8"	36#	J-55
7 7/8"	4708'	4- ½"	10.5#	J-55

### TUBING PROGRAM:

4600	2-3/8"	4.7#	J-55
------	--------	------	------

WELLHEAD: 9 5/8" 2000 x 4 ½" Larkin Fig. 92 casing head. 4 ½" 2000 x 2" tubing head.

### BOP SPECIFICATIONS:

An 11" 2000 psi minimum double gate BOP stack (Figure 1) will be used following nipple up of casing head. During air drilling operations, a Shaffer Type 50 or equivalent rotating head will be installed on top of the stack. A 2" nominal, 2000 psi minimum choke manifold will be used. An upper Kelly Cock valve with handle available and drill string valve to fit each drill string will be available on the rig floor during drilling operations.