

UNITED STATES  
DEPARTMENT OF THE INTERIOR  
BUREAU OF LAND MANAGEMENT

SUBMIT IN TRIPLICATE\*  
(Other instructions on  
reverse side)

FORM APPROVED  
OMB NO. 1004-0136  
Expires: February 28, 1995

APPLICATION FOR PERMIT TO DRILL OR DEEPEN

1a. TYPE OF WORK

DRILL ☒

DEEPEN ☐

b. TYPE OF WELL

OIL  
WELL ☐

GAS  
WELL ☒

OTHER

SINGLE  
ZONE ☒

MULTIPLE  
ZONE ☐

2. NAME OF OPERATOR

ENERGEN RESOURCES CORPORATION

3. ADDRESS AND TELEPHONE NO.

2198 Bloomfield Highway; Farmington, NM 87401

4. LOCATION OF WELL (Report location clearly and in accordance with any State requirements.)

At surface

660' FNL, 1770' FEL

At proposed prod. zone

14. DISTANCE IN MILES AND DIRECTION FROM NEAREST TOWN OR POST OFFICE\*

Seven (7) Miles NE of Gobernador, New Mexico

15. DISTANCE FROM PROPOSED\*

LOCATION TO NEAREST  
PROPERTY OR LEASE LINE, FT.  
(Also to nearest drilg unit line, if any) 660'

18. DISTANCE FROM PROPOSED LOCATION\*  
TO NEAREST WELL, DRILLING, COMPLETED,  
OR APPLIED FOR, ON THIS LEASE, FT.

1300'

21. ELEVATIONS (Show whether DF, RT, GR, etc.)

7507' GR

This action is subject to technical and  
procedural review pursuant to 43 CFR 3160.3  
and appeal pursuant to 43 CFR 3160.5

23. PROPOSED DRILLING AND CEMENTING PROGRAM

SIZE OF HOLE	GRADE SIZE OF CASING	WEIGHT PER FOOT	SETTING DEPTH	QUANTITY OF CEMENT
12 1/4"	9 5/8"	36#	200'	130 cu. ft., circ. to surface
8 3/4"	7"	20 & 23#	4824'	1088 cu. ft., circ. to surface
6 1/8"	4 1/2"	10.5#	4674'-7214'	360 cu. ft., circ. to intermediate

Selectively perforate and sand water fracture the Mesaverde Formation.

This gas is dedicated.

A Williams Field Service Pipeline ROW Plat is attached.

THIS IS AN EXPEDITED APD.

IN ABOVE SPACE DESCRIBE PROPOSED PROGRAM: If proposal is to deepen, give data on present productive zone and proposed new productive zone. If proposal is to drill or deepen directionally, give pertinent data on subsurface locations and measured and true vertical depths. Give blowout preventer program, if any.

24.

SIGNED

*Don Graham*

TITLE

Drilling & Completion Foreman

DATE

1/17/01

(This space for Federal or State office use)

PERMIT NO.

APPROVAL DATE

Application approval does not warrant or certify that the applicant holds legal or equitable title to those rights in the subject lease which would entitle the applicant to conduct operations thereon.

CONDITIONS OF APPROVAL, IF ANY:

AUG - 6

APPROVED BY

*/s/ Joel Farrell*

TITLE

\*See Instructions On Reverse Side

DATE

Title 18 U.S.C. Section 1001, makes it a crime for any person knowingly and willfully to make to any department or agency of the United States any false, fictitious or fraudulent statements or representations as to any matter within its jurisdiction.

NMCD

District I  
PO Box 1980, Hobbs, NM 88241-1980

State of New Mexico  
Energy, Minerals & Natural Resources Department

Form C-102  
Revised February 21, 1994

District II  
PO Drawer DD, Artesia, NM 88211-0719

OIL CONSERVATION DIVISION  
PO Box 2088  
Santa Fe, NM 87504-2088

Submit to Appropriate District Office  
State Lease - 4 Copies  
Fee Lease - 3 Copies

District III  
1000 Rio Brazos Rd., Aztec, NM 87410

District IV  
PO Box 2088, Santa Fe, NM 87504-2088

☐ AMENDED REPORT

WELL LOCATION AND ACREAGE DEDICATION PLAT

1 API Number <b>30-039-26647</b>		2 Pool Code 72319		3 Pool Name Blanco Mesaverde	
4 Property Code <b>21994</b>		5 Property Name SAN JUAN 30-4 UNIT			6 Well Number 428
7 OGRID No. 162928		8 Operator Name ENERGEN RESOURCES CORPORATION			9 Elevation 7507

10 Surface Location

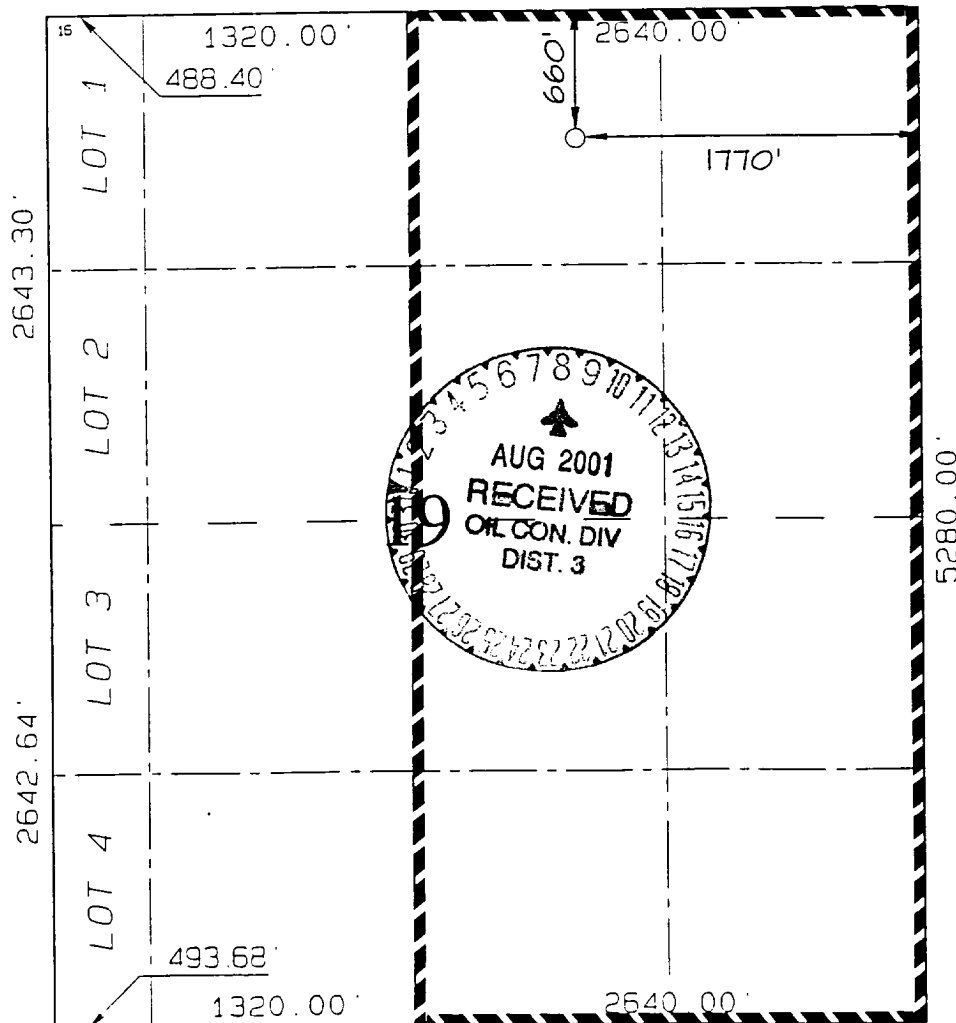
UL or lot no.	Section	Township	Range	Lot Idn	Feet from the	North/South line	Feet from the	East/West line	County
B	19	30N	4W		660	NORTH	1770	EAST	RIO ARriba

11 Bottom Hole Location If Different From Surface

UL or lot no.	Section	Township	Range	Lot Idn	Feet from the	North/South line	Feet from the	East/West line	County

12 Dedicated Acres 320	13 Joint or Infill	14 Consolidation Code	15 Order No
---------------------------	--------------------	-----------------------	-------------

NO ALLOWABLE WILL BE ASSIGNED TO THIS COMPLETION UNTIL ALL INTERESTS HAVE BEEN CONSOLIDATED  
OR A NON-STANDARD UNIT HAS BEEN APPROVED BY THE DIVISION



17 OPERATOR CERTIFICATION

I hereby certify that the information contained herein is true and complete to the best of my knowledge and belief

Signature  
Gary Brink

Printed Name  
Production Superintendent  
Title

Date  
1/17/01

18 SURVEYOR CERTIFICATION

I hereby certify that the well location shown on this plat was plotted from field notes of actual surveys made by me or under my supervision, and that the same is true and correct to the best of my belief

DECEMBER 5, 2000

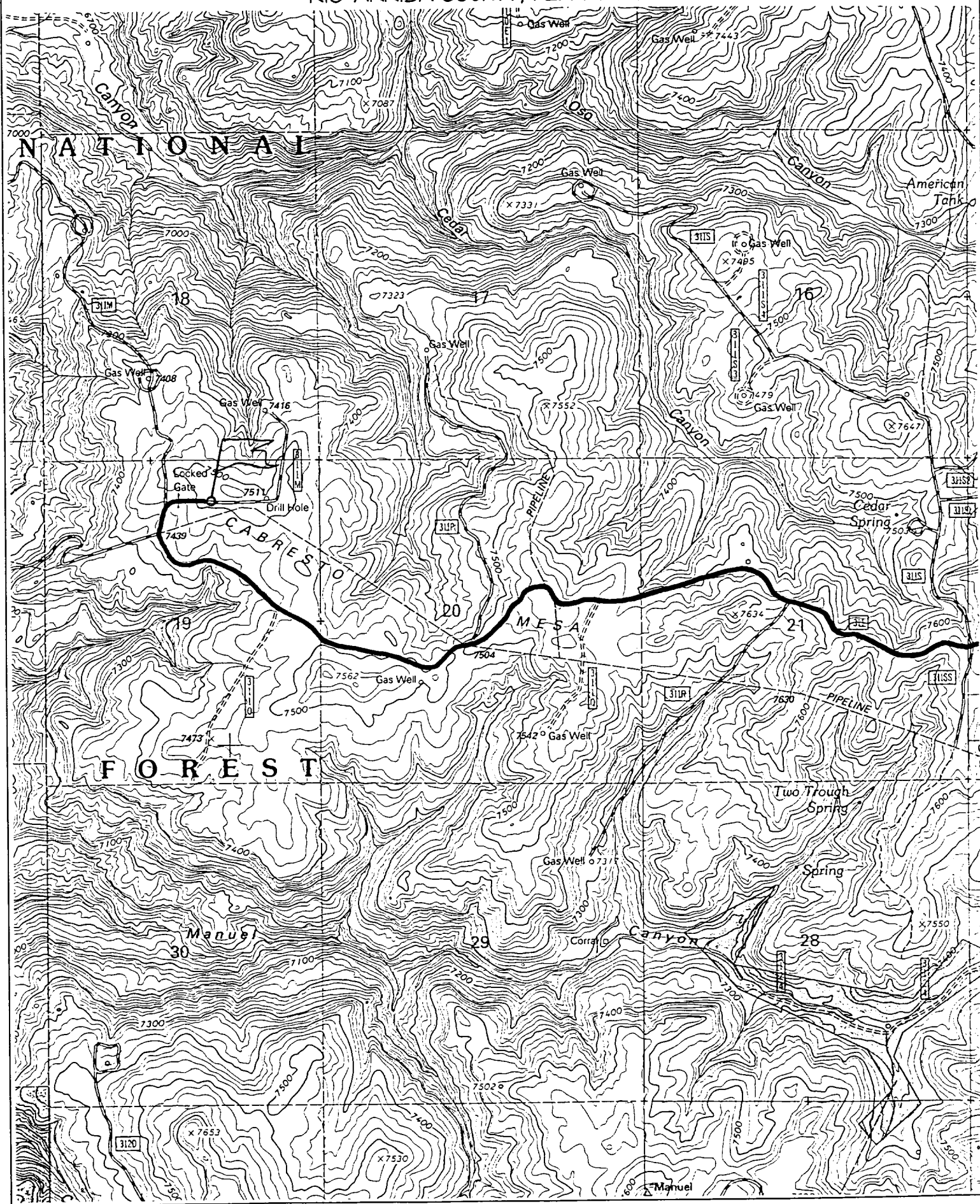
Date of Survey

Signature and Seal of Professional Surveyor

Certificate  
6857

# ENERGEN RESOURCES CORPORATION SAN JUAN 30-4 UNIT #42B

660' FNL & 1770' FEL, SECTION 19, T30N, R4W, N.M.P.M.  
RIO ARriba COUNTY, NEW MEXICO



### BOP SPECIFICATIONS:

An 11" 2000 psi minimum double gate BOP stack (Figure 1) will be used following nipple up of casing head. During air drilling operations, a Shaffer Type 50 or equivalent rotating head will be installed on top of the stack. A 2" nominal, 2000 psi minimum choke manifold will be used.

### CEMENTING:

9 5/8" surface casing - Cement with 110 sks Class B Cement with 1/4# flocele/sk and 2% calcium chloride (130 cu. ft. of slurry, 100% excess to circulate to surface). WOC 12 hrs. Test casing to 600# for 30 minutes.

Texas Pattern Guide Shoe on bottom. 3 bow type centralizers spaced throughout the string.

7" intermediate casing:

Cement with 500 sks 65/35 Class B Poz with 6% gel, 2% calcium chloride, 10% gilsonite, and 1/4# flocele/sk. Tail with 100 sks Class B w/2% calcium chloride, 10% gilsonite and 1/4# flocele/sk. (1088 cu. ft. of slurry, 50% excess to circulate to surface). WOC 12 hrs. If cement does not circulate, run temperature survey in 8 hrs. to determine TOC. Test casing to 1200 psi for 30 minutes.

Cement nose guide shoe on bottom with a self-fill insert float valve on top of shoe joint. 10 bow spring centralizers spaced every 3rd joint off bottom. Two turbolating centralizers at the base of the Ojo Alamo.

4 1/2" Production Liner

Cement with 270 sks 50/50 poz with 2% gel, 5 PPS gilsonite, .4% halad - 9 and 1/4# flocele/sk (360 cu. ft., 50% excess to tie into intermediate casing string). WOC 18 hrs prior to completion.

Cement nose guide shoe on bottom with float collar on top of shoe joint.

### OTHER INFORMATION:

- 1) The Blanco Mesa Verde will be completed.
- 2) No abnormal temperatures or pressures are anticipated.
- 3) Anticipated pore pressure for the Fruitland Coal is 800, Pictured Cliffs 900 and the Mesaverde is 1100.
- 4) If lost circulation is encountered, sufficient LCM will be added to the mud system to maintain well control.
- 5) This gas is dedicated.