

UNITED STATES
DEPARTMENT OF THE INTERIOR
BUREAU OF LAND MANAGEMENT

SUBMIT IN TRIPLICATE*
(Other instructions on
reverse side)

FORM APPROVED
OMB NO. 1004-0136
Expires: February 28, 1995

APPLICATION FOR PERMIT TO DRILL OR DEEPEN

1a. TYPE OF WORK

DRILL ☒

DEEPEN ☐

b. TYPE OF WELL

OIL
WELL ☐

GAS
WELL ☒

OTHER

SINGLE
ZONE ☒

MULTIPLE
ZONE ☐

2. NAME OF OPERATOR

ENERGEN RESOURCES CORPORATION

3. ADDRESS AND TELEPHONE NO.

2198 Bloomfield Highway; Farmington, NM 87401

4. LOCATION OF WELL (Report location clearly and in accordance with any State requirements. *)
At surface

1310' FSL, 1745' FEL

At proposed prod. zone

14. DISTANCE IN MILES AND DIRECTION FROM NEAREST TOWN OR POST OFFICE*

Eight (8) Miles NE of Gobernador, New Mexico

15. DISTANCE FROM PROPOSED*
LOCATION TO NEAREST
PROPERTY OR LEASE LINE, FT.

(Also to nearest drlg. unit line, if any) 1310'

16. NO. OF ACRES IN LEASE

2420.31

17. NO. OF ACRES ASSIGNED
TO THIS WELL

160 SE/4

18. DISTANCE FROM PROPOSED LOCATION*
TO NEAREST WELL, DRILLING, COMPLETED,
OR APPLIED FOR, ON THIS LEASE, FT.

2500'

19. PROPOSED DEPTH

4776'

20. ROTARY OR CABLE TOOLS

Rotary

21. ELEVATIONS (Show whether DF, RT, GR, etc.)

7604' GR

22. APPROX. DATE WORK WILL START*

23. PROPOSED CASING AND CEMENTING PROGRAM

SIZE OF HOLE	GRADE SIZE OF CASING	WEIGHT PER FOOT	SETTING DEPTH	QUANTITY OF CEMENT
12 1/4"	9 5/8"	36#	200'	130 cu. ft., circ. to surface
7 7/8"	4 1/2"	10.5#	4776'	1632 cu. ft., 2 stages

Selectively perforate and sand water fracture the Pictured Cliffs Formation.
This gas is dedicated.

This document is subject to technical and
procedural review pursuant to 43 CFR 3165.3
and appeal pursuant to 43 CFR 3165.4.

IN ABOVE SPACE DESCRIBE PROPOSED PROGRAM: If proposal is to deepen, give data on present productive zone and proposed new productive zone. If proposal is to drill or deepen directionally, give pertinent data on subsurface locations and measured and true vertical depths. Give blowout preventer program, if any.

24.

SIGNED

Don Graham

TITLE

Drilling & Completion Foreman

DATE

1/30/01

(This space for Federal or State office use)

PERMIT NO.

APPROVAL DATE

4/9/02

Application approval does not warrant or certify that the applicant holds legal or equitable title to those rights in the subject lease which would entitle the applicant to conduct operations thereon.

CONDITIONS OF APPROVAL, IF ANY:

/s/ David J. Mankiewicz

APPROVED BY

TITLE

DFM

DATE

4/9/02

*See Instructions On Reverse Side

Title 18 U.S.C. Section 1001, makes it a crime for any person knowingly and willfully to make to any department or agency of the United States any false, fictitious or fraudulent statements or representations as to any matter within its jurisdiction.

District II
PO Drawer 00, Artesia, NM 88211-0719Instructions on back
Submit to Appropriate District Office
State Lease - 4 Copies
Fee Lease - 3 CopiesDistrict III
1000 Rio Brazos Rd., Aztec, NM 87410OIL CONSERVATION DIVISION
PO Box 2088
Santa Fe, NM 87504-2088District IV
PO Box 2088, Santa Fe, NM 87504-2088☐ AMENDED REPORT

WELL LOCATION AND ACREAGE DEDICATION PLAT

*API Number 30-039-26654		*Pool Code 72400	*Pool Name East Blanco Pictured Cliffs
*Property Code 21994	*Property Name SAN JUAN 30-4 UNIT		*Well Number 51
*GRID No. 162928	*Operator Name ENERGEN RESOURCES CORPORATION		*Elevation 7604

10 Surface Location

UL or lot no.	Section	Township	Range	Lot Ion	Feet from the	North/South line	Feet from the	East/West line	County
0	27	30N	4W		1310	SOUTH	1745	EAST	RIO ARriba

11 Bottom Hole Location If Different From Surface

UL or lot no.	Section	Township	Range	Lot Ion	Feet from the	North/South line	Feet from the	East/West line	County

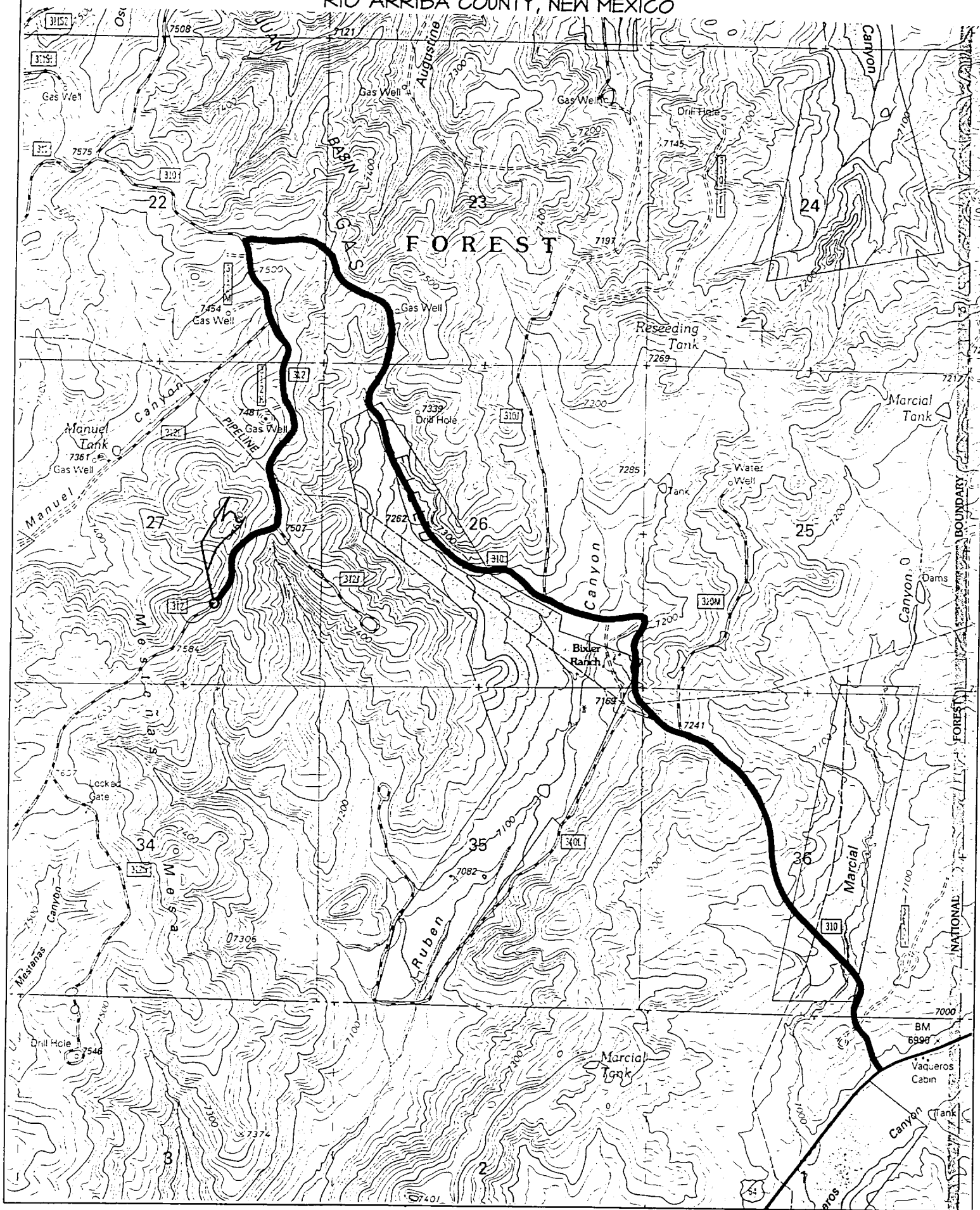
12 Dedicated Acres 160	13 Joint or Infill	14 Consolidation Code	15 Order No.
---------------------------	--------------------	-----------------------	--------------

NO ALLOWABLE WILL BE ASSIGNED TO THIS COMPLETION UNTIL ALL INTERESTS HAVE BEEN CONSOLIDATED
OR A NON-STANDARD UNIT HAS BEEN APPROVED BY THE DIVISION

	16 OPERATOR CERTIFICATION I hereby certify that the information contained herein is true and complete to the best of my knowledge and belief. Signature Gary Brink Printed Name Production Superintendent Title Date 1/30/01
	17 SURVEYOR CERTIFICATION I hereby certify that the well location shown on this plat was plotted from field notes of actual surveys made by me or under my supervision and that the same is true and correct to the best of my belief. AUGUST 25, 2000 Date of Survey Signature and Seal of Neale G. Edwards Certification of Neale G. Edwards, Professional Surveyor, No. 6857

ENERGEN RESOURCES CORPORATION SAN JUAN 30-4 UNIT #5

1310' FSL & 1745' FEL, SECTION 27, T30N, R4W, N.M.P.M.
RIO ARriba COUNTY, NEW MEXICO



OPERATIONS PLAN

WELL NAME: San Juan 30-4 Unit #51

LOCATION: 1310' FSL, 1745' FEL, Section 27, T30N, R4W, Rio Arriba County, NM

FIELD: East Blanco Pictured Cliffs ELEVATION: 7604' GL

FORMATION TOPS:

Surface	San Jose
Nacimiento	2536
Ojo Alamo	3851
Kirtland	3991
Fruitland	4146
Pictured Cliffs	4326
Lewis	4661
Total Depth	4776

LOGGING PROGRAM:

Open Hole Logs:

Surface to TD: HRI/SP/GR, CNT/LDT/MLT

Mud Logs: 200' above Ojo Alamo to total depth

Coring: None

Natural Gauges: None

MUD PROGRAM: Fresh water low solids mud from surface to T. D. 9.0-9.2 PPG.

CASING PROGRAM:

<u>HOLE SIZE</u>	<u>DEPTH</u>	<u>CSG SIZE</u>	<u>WT.</u>	<u>GRADE</u>
12 1/4"	200'	9 5/8"	36#	J-55
7 7/8"	4776'	4- 1/2"	10.5#	J-55

TUBING PROGRAM:

4700	2-3/8"	4.7#	J-55
------	--------	------	------

WELLHEAD: 9 5/8" 2000 x 4 1/2" Larkin Fig. 92 casing head. 4 1/2" 2000 x 2" tubing head.

BOP SPECIFICATIONS:

An 11" 2000 psi minimum double gate BOP stack (Figure 1) will be used following nipple up of casing head. During air drilling operations, a Shaffer Type 50 or equivalent rotating head will be installed on top of the stack. A 2" nominal, 2000 psi minimum choke manifold will be used. An upper Kelly Cock valve with handle available and drill string valve to fit each drill string will be available on the rig floor during drilling operations.

CEMENTING:

9 5/8" surface casing - Cement with 110 sks Class B Cement with 1/4# flocele/sk and 2% calcium chloride (130 cu. ft. of slurry, 100% excess to circulate to surface). WOC 12 hrs. Test casing to 600# for 30 minutes.

Texas Pattern Guide Shoe on bottom.

4 1/2" production casing:

First Stage - cement with 185 sks Class B with 2% Calcium Chloride, 10% Gilsonite and 1/4# flocele/sks (231 cu. ft. of slurry, 50% excess to circulate stage tool @ 4100).

Second Stage - cement with 730 sks 65/35 Class B Poz with 6% gel, 2% calcium chloride, 10% gilsonite, and 1/4# flocele/sk. Tail with 50 sks Class B w/2% calcium chloride, 10% gilsonite and 1/4# flocele/sk. (1401 cu. ft. of slurry, 50% excess to circulate to surface). WOC 12 hrs.

Cement nose guide shoe on bottom with a self-fill insert float valve on top of shoe joint. 8 bow spring centralizers spaced every 3rd joint off bottom. One bow spring centralizer below and eight above stage tool at 3700. Two turbolating centralizers at the base of the Ojo Alamo.

OTHER INFORMATION:

- 1) No abnormal temperatures or pressures are anticipated.
- 2) If lost circulation is encountered, sufficient LCM will be added to the mud system to maintain well control.
- 3) This gas is dedicated.
- 4) Anticipated pore pressure for the Fruitland is 900 psi and the Pictured Cliffs is 1000 psi.