

UNITED STATES
DEPARTMENT OF THE INTERIOR
BUREAU OF LAND MANAGEMENT

SUBMIT IN TRIPLICATE*
(Other instructions on
reverse side)

FORM APPROVED
OMB NO. 1004-0136
Expires: February 28, 1995

APPLICATION FOR PERMIT TO DRILL OR DEEPEN

1a. TYPE OF WORK DRILL <input checked="" type="checkbox"/> DEEPEN <input type="checkbox"/>		5. LEASE DESIGNATION AND SERIAL NO. SF-079488
b. TYPE OF WELL OIL WELL <input type="checkbox"/> GAS WELL <input checked="" type="checkbox"/> OTHER <input type="checkbox"/> SINGLE ZONE <input checked="" type="checkbox"/> MULTIPLE ZONE <input type="checkbox"/>		6. IF INDIAN, ALLOTTEE OR TRIBE NAME
2. NAME OF OPERATOR ENERGEN RESOURCES CORPORATION		7. UNIT AGREEMENT NAME San Juan 30-4 Unit 21994
3. ADDRESS AND TELEPHONE NO. 2198 Bloomfield Highway; Farmington, NM 87401		8. FARM OR LEASE NAME, WELL NO. San Juan 30-4 Unit 33B
4. LOCATION OF WELL (Report location clearly and in accordance with any State requirements.) At surface 1725' FNL, 1710' FWL At proposed prod. zone		9. API WELL NO. 30-039-26655
14. DISTANCE IN MILES AND DIRECTION FROM NEAREST TOWN OR POST OFFICE* Seven (7) Miles NE of Gobernador, New Mexico		10. FIELD AND POOL, OR WILDCAT Blanco Mesaverde
15. DISTANCE FROM PROPOSED* LOCATION TO NEAREST PROPERTY OR LEASE LINE, FT. (Also to nearest drlg. unit line, if any) 1710'	16. NO. OF ACRES IN LEASE 506.24	11. SEC., T., R., M., OR BLK. AND SURVEY OR AREA F Sec. 31, T30N, R4W, N.M.P.M.
18. DISTANCE FROM PROPOSED LOCATION* TO NEAREST WELL, DRILLING, COMPLETED, OR APPLIED FOR, ON THIS LEASE, FT. 1400'	19. PROPOSED DEPTH 7069'	12. COUNTY OR PARISH Rio Arriba
21. ELEVATIONS (Show whether DF, RT, GR, etc.) 7417' GR		13. STATE NM
20. ROTARY OR CABLE TOOLS Rotary		17. NO. OF ACRES ASSIGNED TO THIS WELL 205.88 W/2
22. APPROX. DATE WORK WILL START*		

23. PROPOSED CASING AND CEMENTING PROGRAM

SIZE OF HOLE	GRADE, SIZE OF CASING	WEIGHT PER FOOT	SETTING DEPTH	QUANTITY OF CEMENT
12 1/4"	9 5/8"	36#	200'	130 cu. ft., circ. to surface
8 3/4"	7"	20 & 23#	4675'	1054 cu. ft., circ. to surface
6 1/8"	4 1/2"	10.5#	4525'-7069'	360 cu. ft., circ. to intermediate

Selectively perforate and sand water fracture the Mesaverde Formation.
This gas is dedicated.

This action is subject to the
procedural review pursuant to 43 CFR 3165.3
and appeal pursuant to 43 CFR 3165.4.

IN ABOVE SPACE DESCRIBE PROPOSED PROGRAM: If proposal is to deepen, give data on present productive zone and proposed new productive zone. If proposal is to drill or deepen directionally, give pertinent data on subsurface locations and measured and true vertical depths. Give blowout preventer program, if any.

24. SIGNED [Signature] TITLE Drilling & Completion Foreman DATE 1/30/01

(This space for Federal or State office use)

PERMIT NO. _____ APPROVAL DATE 4/9/02

Application approval does not warrant or certify that the applicant holds legal or equitable title to those rights in the subject lease which would entitle the applicant to conduct operations thereon.
CONDITIONS OF APPROVAL, IF ANY:

APPROVED BY /s/ David J. Mankiewicz TITLE AFM DATE 4/9/02

*See Instructions On Reverse Side

Title 18 U.S.C. Section 1001, makes it a crime for any person knowingly and willfully to make to any department or agency of the United States any false, fictitious or fraudulent statements or representations as to any matter within its jurisdiction.

District I
PO Box 1980, Hobbs, NM 88241-1980

District II
PO Drawer 00, Artesia, NM 88211-0719

District III
1000 Rio Brazos Rd., Aztec, NM 87410

District IV
PO Box 2088, Santa Fe, NM 87504-2088

State of New Mexico
Energy, Minerals & Natural Resources Department

OIL CONSERVATION DIVISION
PO Box 2088
Santa Fe, NM 87504-2088

Form C-102
Revised February 21, 1994
Instructions on back
Submit to Appropriate District Office
State Lease - 4 Copies
Fee Lease - 3 Copies

☐ AMENDED REPORT

WELL LOCATION AND ACREAGE DEDICATION PLAT

*API Number 30-039-26655		*Pool Code 72319	*Pool Name Blanco Mesaverde
*Property Code 21994	*Property Name SAN JUAN 30-4 UNIT		*Well Number 338
*UGRID No. 162928	*Operator Name ENERGEN RESOURCES CORPORATION		*Elevation 7417

¹⁰ Surface Location

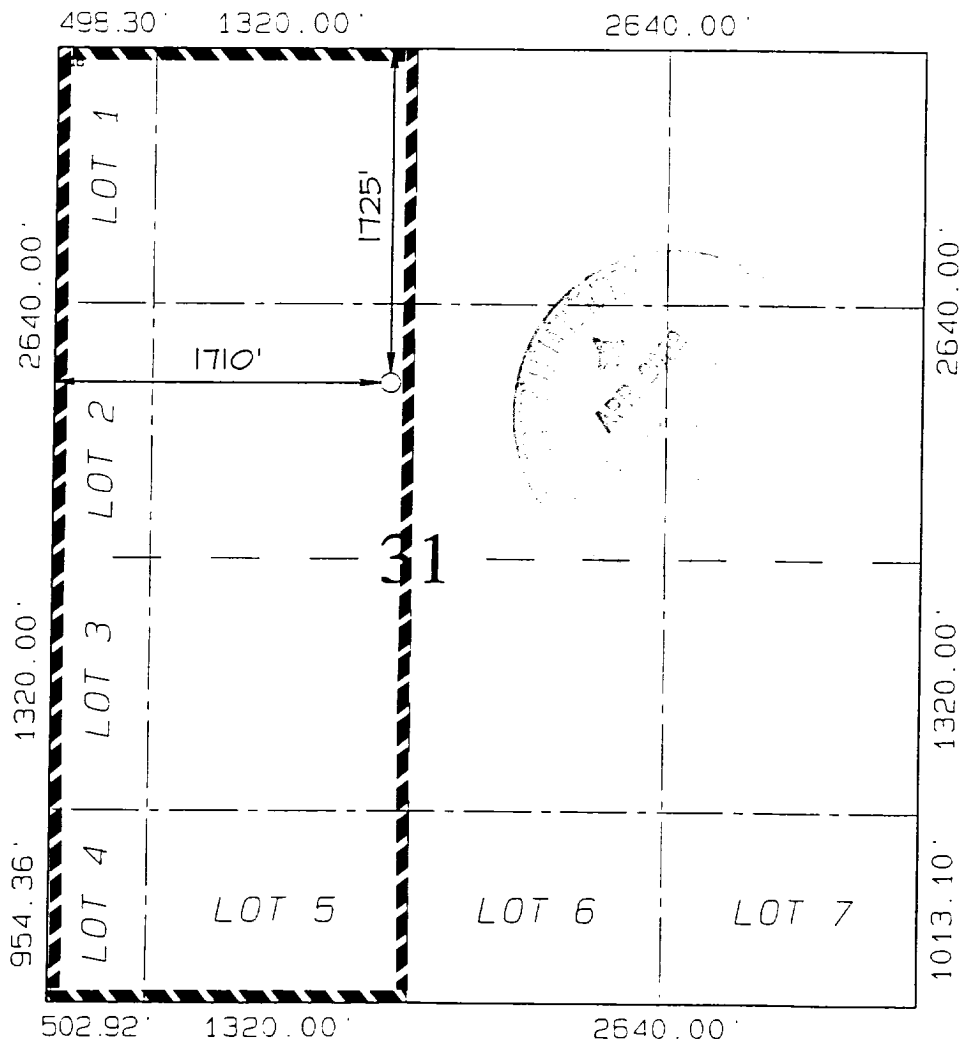
UL or lot no. F	Section 31	Township 30N	Range 4W	Lot Idn	Feet from the 1725	North/South line NORTH	Feet from the 1710	East/West line WEST	County RIO ARriba
--------------------	---------------	-----------------	-------------	---------	-----------------------	---------------------------	-----------------------	------------------------	----------------------

¹¹ Bottom Hole Location If Different From Surface

UL or lot no.	Section	Township	Range	Lot Idn	Feet from the	North/South line	Feet from the	East/West line	County
---------------	---------	----------	-------	---------	---------------	------------------	---------------	----------------	--------

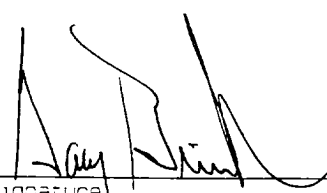
¹² Dedicated Acres 205.88	¹³ Joint or Infill	¹⁴ Consolidation Code	¹⁵ Order No. NWV 362
---	-------------------------------	----------------------------------	------------------------------------

NO ALLOWABLE WILL BE ASSIGNED TO THIS COMPLETION UNTIL ALL INTERESTS HAVE BEEN CONSOLIDATED
OR A NON-STANDARD UNIT HAS BEEN APPROVED BY THE DIVISION



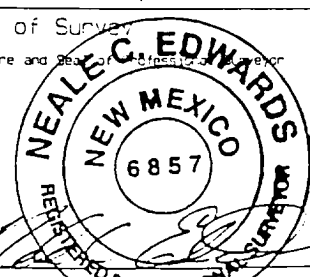
¹⁷ OPERATOR CERTIFICATION

I hereby certify that the information contained herein is true and complete to the best of my knowledge and belief.

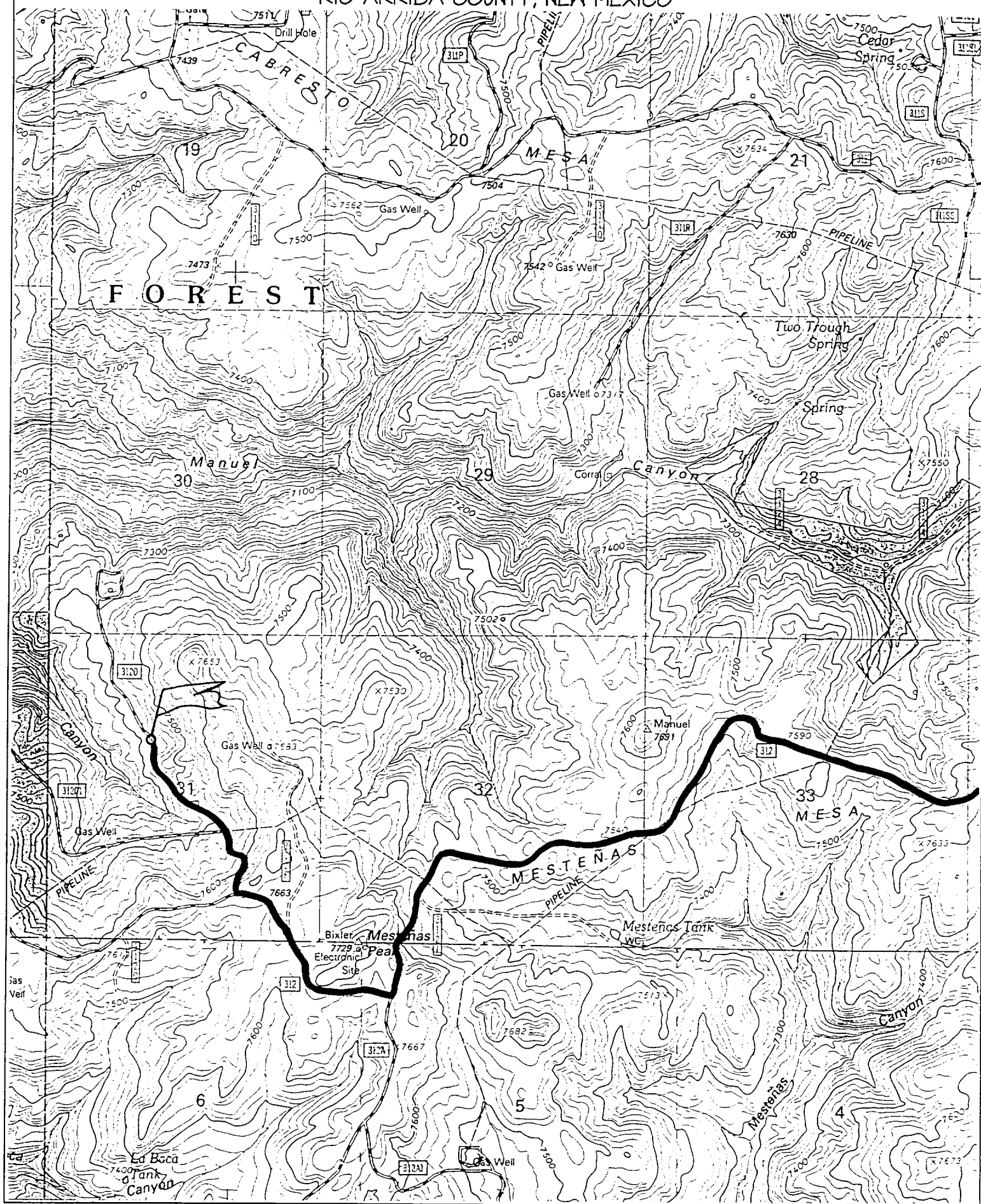

Signature
Gary Brink
Printed Name
Production Superintendent
Title
1/30/01
Date

¹⁸ SURVEYOR CERTIFICATION

I hereby certify that the well location shown on this plat was plotted from field notes of actual surveys made by me or under my supervision, and that the same is true and correct to the best of my belief.

AUGUST 25, 2000
Date of Survey
Signature and Seal of Registered Surveyor

Certificate 6857

1725' FNL & 1710' FWL, SECTION 31, T30N, R4W, N.M.P.M.
RIO ARriba COUNTY, NEW MEXICO



OPERATIONS PLAN

WELL NAME: San Juan 30-4 Unit 33B

LOCATION: 1725' FNL, 1710' FWL, Section 31, T30N, R4W, Rio Arriba County, NM

FIELD: Blanco Mesaverde

ELEVATION: 7417' GR

FORMATION TOPS:

Surface	San Jose	Huerfanito Benonite	5109
Nacimiento	2244	Cliff House	5969
Ojo Alamo	3499	Menefee	6274
Kirtland	3729	Point Lookout	6519
Fruitland	3934	Total Depth	7069
Pictured Cliffs	4149		
Lewis	4444		

LOGGING PROGRAM:

Open Hole Logs:

Surface to intermediate: HRI/SP/GR; CNT/LDT/MLT

Inter TD to total depth: Temp/HRI/CNT; LDT/GR

Mud Logs: 200' above Ojo Alamo to total depth

Coring: None

Natural Gauges: Every 500' from intermediate T. D. to T. D.

MUD PROGRAM: Fresh water low solids mud from surface to intermediate T. D. Air/mist from intermediate casing point to T. D.

CASING PROGRAM:

<u>HOLE SIZE</u>	<u>DEPTH</u>	<u>CSG SIZE</u>	<u>WT.</u>	<u>GRADE</u>
12 1/4"	200'	9 5/8"	36#	J-55
8 3/4"	4675'	7"	20 & 23#	J-55
6 1/8"	4525'-7069'	4 1/2"	10.5#	J-55

TUBING PROGRAM:

7000	2 3/8"	4.7	J-55
------	--------	-----	------

WELLHEAD: 11" 3000 x 9 5/8" casing head. 11" 3000 x 7 1/16" 3000 xmas tree.

BOP SPECIFICATIONS:

An 11" 2000 psi minimum double gate BOP stack (Figure 1) will be used following nipple up of casing head. During air drilling operations, a Shaffer Type 50 or equivalent rotating head will be installed on top of the stack. A 2" nominal, 2000 psi minimum choke manifold will be used.

CEMENTING:

9 5/8" surface casing - Cement with 110 sks Class B Cement with 1/4# flocele/sk and 2% calcium chloride (130 cu. ft. of slurry, 100% excess to circulate to surface). WOC 12 hrs. Test casing to 600# for 30 minutes.

Texas Pattern Guide Shoe on bottom. 3 bow type centralizers spaced throughout the string.

7" intermediate casing:

Cement with 550 sks 65/35 Class B Poz with 6% gel, 2% calcium chloride, 10% gilsonite, and 1/4# flocele/sk. Tail with 100 sks Class B w/2% calcium chloride, 10% gilsonite and 1/4# flocele/sk. (1054 cu. ft. of slurry, 50% excess to circulate to surface). WOC 12 hrs. If cement does not circulate, run temperature survey in 8 hrs. to determine TOC. Test casing to 1200 psi for 30 minutes.

Cement nose guide shoe on bottom with a self-fill insert float valve on top of shoe joint. 10 bow spring centralizers spaced every 3rd joint off bottom. Two turbolating centralizers at the base of the Ojo Alamo.

4 1/2" Production Liner

Cement with 270 sks 50/50 poz with 2% gel, 5 PPS gilsonite, .4% halad - 9 and 1/4# flocele/sk (360 cu. ft., 50% excess to tie into intermediate casing string). WOC 18 hrs prior to completion.

Cement nose guide shoe on bottom with float collar on top of shoe joint.

OTHER INFORMATION:

- 1) The Blanco Mesa Verde will be completed.
- 2) No abnormal temperatures or pressures are anticipated.
- 3) Anticipated pore pressure for the Fruitland Coal is 800, Pictured Cliffs 900 and the Mesaverde is 1100.
- 4) If lost circulation is encountered, sufficient LCM will be added to the mud system to maintain well control.
- 5) This gas is dedicated.